

Native Plant – Pollinator Gardens on the Allegheny National Forest

2011 Accomplishments Bradford Ranger District

Program activities in FY2011 focused on the development of the Bradford Ranger District Office Native Plant - Pollinator garden. Work at the Bradford office included a contract to remove turf grass and non-native invasive landscape plants in three areas around the office (approximately 1,700 square feet) and replace with native plants, a rain garden, a water feature and interpretive signs (Figure 1-3). FY11 funding also included the purchase of plant labels and signs for three existing gardens.

Next steps include creating and installing a “What’s Happening Here Sign”, plant labels, Monarch Waystation signs and interpretive signs in the spring of FY12.



Figure 1. Area in front of office prior to invasive plant removal.

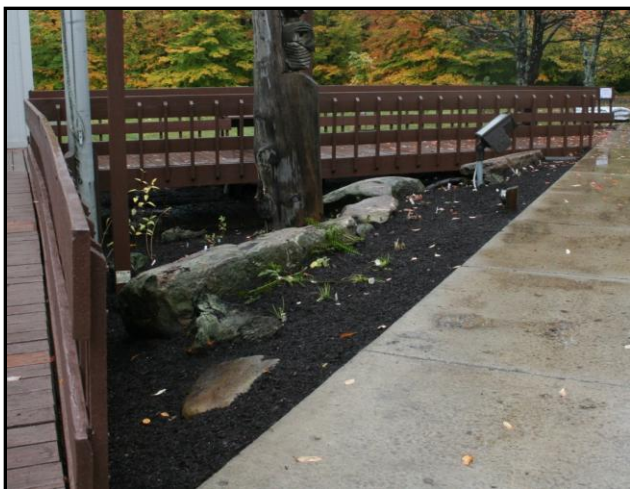


Figure 2. Area in front of office after invasive plant removal.



Figure 3. Rain Garden Creation.

Year Project Initiated: **FY2011**

Project completion: **FY2012**

Report number: **1 of 1**

FY11 funding: **\$19,000**

Partners/Contractors/Coop:

National Garden Club Federation –NW PA chapter

Contact Person & phone number:

April Moore 814-363-6069



Allegheny National Forest
4 Farm Colony Dr.
Warren, PA 16365