

# Seed Collection for Native Grass Species on the Custer National Forest

## 2008 Accomplishments

The Custer National Forest contributed to the wildland native seed collection of Idaho fescue (*Festuca idahoensis*) and bluebunch wheatgrass (*Pseudoroegneria spicata*) under the Region One Common Garden Study to develop seed transfer zones for native revegetation species.

The Common Garden Study will contribute to our understanding of genetic variation in revegetation species within their range in Region One. The results of the study will be used to develop seed transfer guidelines for Forest Service System lands in Region One as well as adjacent areas. Results will also be used to compare native genotypes to “restoration cultivars”.



Figure 2. Ashland sites – Idaho fescue

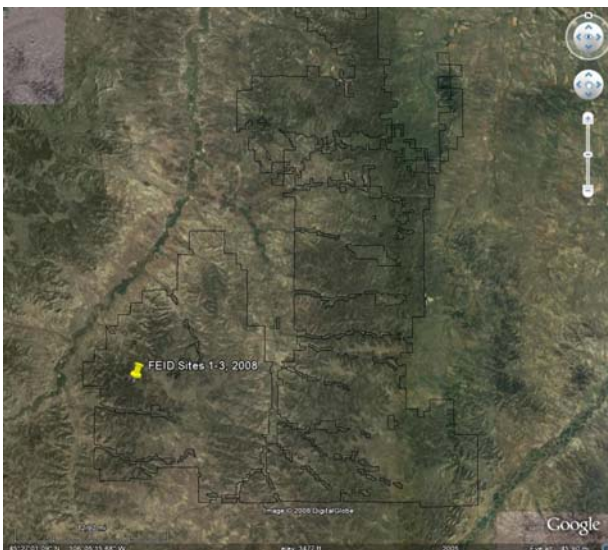


Figure 1. Ashland sites – Idaho fescue

Year awarded: 2008

Project completion: 2008

Report number: 1 of 1

Expenditures (through 10/2008):  
FY08 NFN3 funding \$2,400

Contact person & phone number:  
Kim Reid 406-657-6205



**Custer National Forest**  
1310 Main Street  
Billings, MT 59105