



United States Department of Agriculture

# FISCAL YEAR 2018 BUDGET OVERVIEW



Forest Service

May 2017

**Table of Contents**

Budget Overview

Appendix A: Forest Service Budget Summary

Appendix B: 3-Year Summary of Appropriations

Appendix C: 3-Year Summary of FTEs

Appendix D: Revenue, Receipts, and Transfers

Appendix E: Org Chart

Appendix F: Available Funds and Staff Years

Appendix G: Permanent Positions by Grade and Staff Year Summary

Appendix H: Motor Vehicle Fleet

Appendix I: Lead-Off Tabular Statement

Appendix J: Summary of Increases and Decreases

Appendix K: Project Statements

Appendix L: Classification by Objects

Appendix M: Shared Funding Project

**“The greatest good for the greatest number in the long run.”**  
**Gifford Pinchot, first Chief of the U.S. Forest Service (1905-1910)**

**Mission** – the Forest Service’s mission to sustain the health, diversity, and productivity of the Nation's forests and grasslands to meet the needs of present and future generations.

**Budget Overview** – The 2018 Forest Service budget for discretionary appropriations is \$4.73 billion, a decrease of \$938 million below the 2017 annualized Continuing Resolution. It includes \$1.75 billion for the management of National Forest System lands and \$2.5 billion for Wildland Fire Management. The Administration outlined specific guidance and priorities in the FY 2018 Budget Blueprint to Make America Great Again. In particular, these are:

- Fully funding wildland fire preparedness and suppression activities at \$2.4 billion. Suppression is funded at 100 percent of the 10-year average for suppression expenditures to ensure the resources necessary to protect life and property.
- Reducing funding for lower priority activities in the National Forest System, such as new Federal land acquisitions; instead, the 2018 President’s Budget focuses on maintaining existing forests and grasslands.

**Jobs and Economic Contribution** – The Forest Service supports considerable economic activity in national, regional and local economies through natural resource management, research and development, wildland fire management infrastructure investment, grants, and payments to other government entities, and by providing sustainable use of the national forests and grasslands. A recent analysis indicated Forest Service programs and work in FY 2014 contributed nearly 360,000 jobs (average annual full-time, part-time, temporary, and seasonal) and more than \$30 billion in gross domestic product (GDP) capturing the cumulative jobs and GDP effects (direct, indirect, and induced components). Almost 65 percent of the economic activity was generated by resource use effects such as recreation visitor use, hunting and fishing, energy and minerals development, forest products, and livestock grazing.

The FY 2018 budget proposal maintains significant Forest Service economic activity, particularly benefitting many rural forest and grassland dependent communities as well as the nation as a whole. The proposed Forest Service program of work is projected to contribute between 340,000 and 370,000 jobs in the economy and between \$30 billion and \$31 billion in GDP. A greater share of the economic benefit, up to 70 percent, is anticipated to be generated by resource use effects in FY 2018. While all resource uses are important to the nation, recreation and wildlife visitor use will continue to provide the single largest category of economic contribution.

**Wildland Fire Management** – In 2018, the Wildland Fire Management budget is \$2.495 billion, a decrease of \$708 million below the 2017 annualized Continuing Resolution funding level. The significant changes to the appropriation are:

- An increase of \$259 million to Preparedness funding to improve accountability at both the national and regional level. The Forest Service is strengthening its financial accountability and increasing predictability in its budget planning and execution process. Starting in FY 2018, Forest Service firefighters will charge all base hours (the first eight hours of each day) to Preparedness and, when fighting fires, charge any hours over eight per day to Suppression. This funding honors a 2002 commitment to implement joint Forest Service/Department of the Interior business rules for budget planning of base 8-hour expenditures. This funding increase was shifted from the Suppression program where it was historically charged.
- An increase of \$247 million to Suppression funding to fully fund the 10-year average expenditure for suppression operations. In 2018, the 10-year average is \$1.057 billion. When compared to the 2017 budget, this seems like a reduction because the 10-year average was rebased. However, since base 8-hour expenditures will be charged to Preparedness, the 10-year average was recalculated with those expenditures removed from the last 10-years of expenditure data.
- The Federal Land Assistance, Management and Enhancement (FLAME) Wildfire Suppression Reserve Fund is not funded. The FLAME fund was intended as distinct appropriation providing funds to cover fires escaping initial attack (response) that are sufficiently large and complex, or when overall fire activity is at such high levels that the resources appropriated to the Suppression account are about to be completely obligated.

However, as a practical matter, these funds are not a reserve, but are now part of the base program as suppression costs have exceeded the base appropriation in all but two years since enactment of the FLAME Act. It is now duplicative and is not funded to reduce inefficiencies in budget execution.

- Hazardous Fuels has been moved from the Wildland Fire Management appropriation to the National Forest System appropriation. Nearly all hazardous fuels reduction work takes place on or adjacent to National Forest System lands and the funds are allocated to the Regions which are responsible for the broader restoration portfolio. The proposal to appropriate hazardous fuels within the National Forest System aims to improve coordination within the National Forest System and increase goods and services coming from National Forest System lands.
- The Joint Fire Science program is not proposed for funding because it is duplicative with research efforts already being conducted through the *Forest and Rangeland Research* appropriation and the *National Fire Plan Research and Development* budget line item.

**National Forest System** – In 2018, the National Forest System budget is \$1.75 billion, including Hazardous Fuels funding. The significant changes to the appropriation are:

- Forest Products funding remains unchanged from 2017 levels and signifies the Administration's commitment to rural communities, jobs creation, shared stewardship, and the production of goods and services from National Forest System lands. Through the use of tools like the Good Neighbor and other Farm Bill authorities utilizing funding within permanent and trust accounts, the Forest Service aims to sell 3.2 billion board feet of timber while improving the resilience of more than 1.7 million acres of National Forest System lands.
- An increase of \$2.7 million to Law Enforcement and Investigations for marijuana eradication operations. Marijuana grow sites present a tremendous risk to public safety and environmental quality. Law enforcement officers work to protect public safety by removing the criminal element from National Forest System lands; however, the pesticides, herbicides, and rodenticides used to grow marijuana contaminate the land and the rerouting of water to marijuana grow sites create detrimental conditions for forests already stressed by drought. The increase in funding will result in restored sites free of hazardous chemicals. Evidence shows restored sites are repopulated by the criminal element less than unrestored sites.
- A decrease of \$8.3 million to Recreation, Heritage, and Wilderness. This program provides the public with outdoor opportunities in their national forests and grasslands. Each year, there are nearly 149 million visits to the national forests and grasslands and visitors engage in activities that include, hiking, camping, skiing, shooting sports, and water sports, among others. The Forest Service Recreation program contributes roughly \$10 billion to the Gross Domestic Product, and sustains about 143,000 full- and part-time jobs.
- A decrease of \$56 million to the Land Acquisition program. In 2018, the Forest Service will complete the acquisition of Congressionally identified projects in prior year appropriations bill reports; however, the Administration is not proposing additional land acquisitions using funds from the Land and Water Conservation Fund.

**Infrastructure** – In 2018, the Capital Improvement and Maintenance budget is nearly \$100 million, a decrease of \$264 million below the 2017 annualized Continuing Resolution funding level. The President's Budget refocuses the Capital Improvement and Maintenance programs on retaining staff to manage existing infrastructure, primarily National Forest System Roads.

- National Forest System roads provide access to outdoor recreational activities like hunting and fishing which bolster local economies in and around national forests, and access for first responders in the event of wildland fire and other emergency situations. National Forest System roads also allow for safe and efficient extraction of timber and minerals from national forests and grasslands.
- The budget also provides focused funding for staff who work on high-priority facilities, roads, and trails, but does not provide funding for deferred maintenance. Both facilities and trails are key to the mission of the Forest Service. Forest Service will focus on fixing facilities and trails that pose serious threats to public health or safety, a natural resource, or to the ability of the Forest Service to implement its mission.

- At the proposed level of \$99,693,000, the 2018 budget focuses the Capital Improvement and Maintenance programs on managing existing infrastructure and maintaining public safety.
- The budget does not provide separate funding for the Legacy Roads and Trails program. The critical work of the Legacy Roads and Trails program will be administered as part of regular Roads and Trails program activities.

### ***Legislative Proposals***

Recreation Fee Program – The 2018 budget proposes appropriations language for permanent authorization of the Federal Lands Recreation Enhancement Act (FLREA) which is currently scheduled to expire on September 30, 2018. The Forest Service receives approximately \$65 million annually in recreation fee revenue. This includes approximately \$12 million from National Recreation Reservation Service fees; \$10 million from certain special use permits; \$2 million from interagency pass sales; \$21 million for fees such as campgrounds and cabin rentals; and \$20 million for fees such as picnic areas and day use sites. Ninety-five percent of the recreation fees collected on a national forest stay at that national forest to be reinvested in recreation sites and services. If FLREA expires without reauthorization, the agencies will have no recreation fee authority for operations and maintenance of recreation facilities or for payment for the National Recreation Reservation System.

Communications Site Program – The Forest Service seeks authority to retain \$4.5 million from annual communication site rental fees to better manage the growing use of Forest Service lands for communications facilities. This will result in an increased annual return on investment to the Treasury within two years. This proposal will result in:

- Reduced processing time for new applications to provide better customer service (currently it takes one to three years to process a new application).
- Enhanced and expanded telecommunications provided to rural communities via broadband, personal communications systems, and emergency services.
- Increased safety of visitors, agency staff, and first responders through additional communications capacity and reliability.

The Forest Service proposes to use funds from the Purchaser Elect account as an offset for FY 2018 and FY 2019 while the agency sets up staff and program infrastructure to collect fees. The offset will be \$3.7 million and \$2.7 million in FY 2018 and 2019, respectively.

Administrative Sites Conveyance Program – The 2018 budget proposes appropriations language to reauthorize the Forest Service Facilities Realignment and Enhancement Act of 2005 (FSREA). FSREA would allow the Secretary to convey administrative sites that the Forest Service no longer needs, and retain the proceeds from the sales for the acquisition, improvement, maintenance, reconstruction, or construction of facilities. The authority is a valuable tool for managing facilities, addressing deferred maintenance, and providing facilities which better serve the public. Reauthorization would allow for better utilization of existing resources, increase the agency's ability to address health and safety issues, and enhanced service to the public.

Small Tracts Act – The 2018 budget proposes to expand the Forest Service's small parcel conveyance authority to establish additional categories of the National Forest System lands which the Secretary of Agriculture is authorized to sell, interchange or exchange, if in the public interest. The proposal increases the maximum value of the land that can be conveyed under this authority from \$150,000 to \$500,000 to better align with current land values. Proceeds from the sale of National Forest System lands under this proposed authority will be collected under the Sisk Act and may be used for acquisition of resource lands or administrative facilities.

Grazing permits – The 2018 budget proposes an amendment to the Federal Land Management Policy Act (FLPMA) to correct the National Defense Appropriations Act (NDAA) amendment to FLPMA section 402 and that it remain in effect for FY 2018 and each fiscal year thereafter. The proposed amendment addresses concerns around the renewal of grazing permits issued by the Forest Service. The current authority applies to grazing on National Forests in the contiguous Western States, but not to grazing on National Grasslands and on eastern National Forests. With this amendment, the terms and conditions would apply to grazing permits issued by the Forest Service on any

National Forest System lands and would allow the Eastern forests and grasslands the flexibility accorded to Western forests and grasslands with regard to meeting NEPA schedules. The amendment would also prevent the Forest Service from being in violation of the 1995 Rescission Act and, therefore, less vulnerable to legal challenges.

**Corrections for Forest Service's FY 2018 President's Budget**

The Fiscal Year 2016 total obligations (direct plus reimbursable, line 0900) in the Budget Appendix of the FY 2018 President's Budget are correct, but the split between reimbursable and direct spending is incorrect. The FY 2016 total obligations in the Project Statement and Classification by Objects in the Forest Service's FY 2018 Budget Overview appendices are correct. The FY 2017 and 2018 obligations in the Project Statement and Classification by Objects match the appropriation level plus the allocation of prior year balances.

This page intentionally left blank

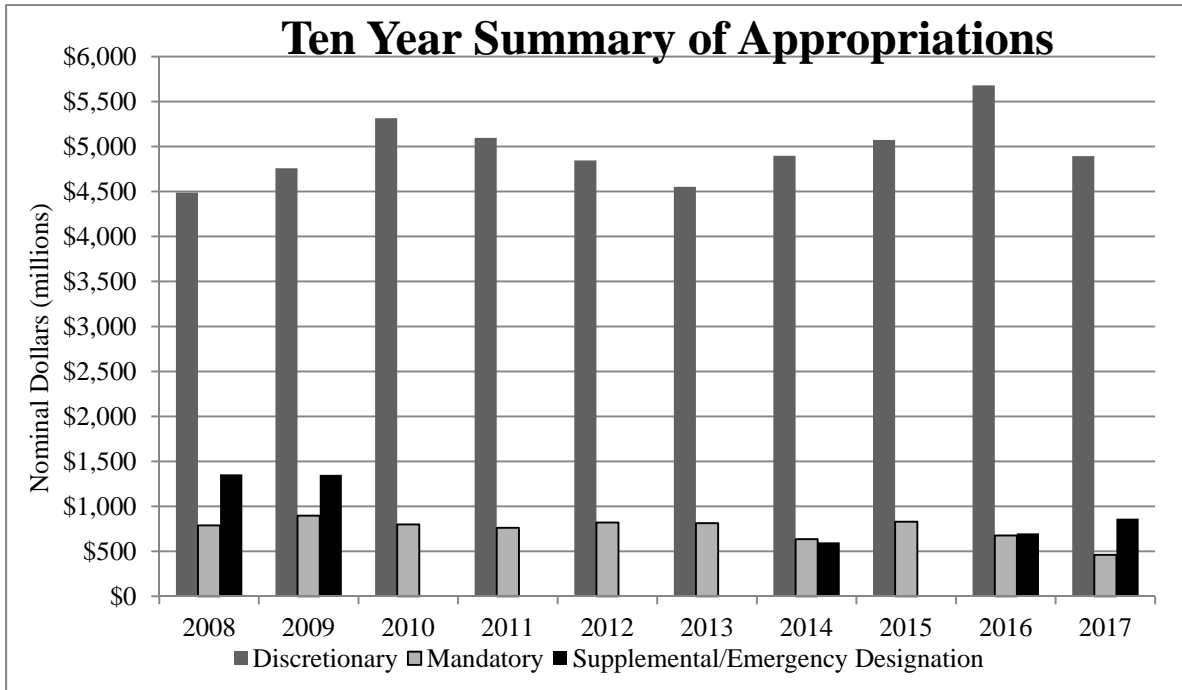


**Forest Service Budget Summary**

*(dollars in thousands)*

	<b>FY 2017 Annualized CR</b>	<b>Program Changes</b>	<b>FY 2018 President's Budget</b>	<b>Pay Costs*</b>
<b>Annual Appropriations</b>				
<b>Discretionary Funds</b>				
Forest & Rangeland Research	\$290,447	-\$31,447	\$259,000	\$3,441
State & Private Forestry	236,573	-118,563	118,010	649
National Forest System	1,506,496	240,946	1,747,442	21,098
Capital Improvement & Maintenance	363,472	-263,779	99,693	1,703
Land Acquisition	64,478	-56,436	8,042	39
Other Appropriations	4,856	-521	4,335	51
Wildland Fire Management	2,381,795	113,243	2,495,038	20,272
FLAME Wildfire Suppression Reserve	821,436	-821,436	0	0
<b>Discretionary Funds Total</b>	<b>\$5,669,553</b>	<b>-\$937,993</b>	<b>\$4,731,560</b>	<b>\$47,253</b>
Fire Transfer Repayment	0		0	0
Suppression Cap Adjustment	0		0	0
<b>Mandatory Appropriations</b>	<b>\$499,333</b>	<b>-\$32,000</b>	<b>\$467,333</b>	<b>0</b>
<b>Grand Total, Forest Service</b>	<b>\$6,168,886</b>	<b>-\$969,993</b>	<b>\$5,198,893</b>	<b>\$47,253</b>

\*Pay costs are included within each appropriation for FY 2018. The total Pay Cost increase for FY 2018 is \$47,253,000.



FOREST SERVICE

**Three-Year Summary of Appropriations**

	(dollars in thousands)				
	FY 2016 Enacted	FY 2017 Annualized CR	FY 2018 President's Budget	Program Changes	Percent of Change
<b>Forest &amp; Rangeland Research</b>					
Forest and Rangeland Research	\$291,000	\$290,447	\$259,000	-\$31,447	-11%
<b>Forest &amp; Rangeland Research Total</b>	<b>291,000</b>	<b>290,447</b>	<b>259,000</b>	<b>-31,447</b>	<b>-11%</b>
<b>State &amp; Private Forestry</b>					
Landscape Scale Restoration	14,000	13,973	0	-13,973	-100%
Forest Health Management - Federal Lands	58,922	58,810	54,205	-4,605	-8%
Forest Health Management - Cooperative Lands	40,678	40,601	36,185	-4,416	-11%
Forest Stewardship	23,036	22,992	20,500	-2,492	-11%
Forest Legacy Program	62,347	62,229	0	-62,229	-100%
Community Forest and Open Space Conservation	2,000	1,996	0	-1,996	-100%
Urban and Community Forestry	28,040	27,987	0	-27,987	-100%
International Forestry	8,000	7,985	7,120	-865	-11%
<b>State and Private Forestry Total</b>	<b>237,023</b>	<b>236,573</b>	<b>118,010</b>	<b>-118,563</b>	<b>-50%</b>
<b>National Forest System</b>					
Integrated Resource Restoration	0	0	0	0	0%
Collaborative Forest Landscape Restoration	40,000	39,924	0	-39,924	-100%
Land Management Planning	36,998	36,928	33,000	-3,928	-11%
Inventory and Monitoring	147,998	147,717	132,000	-15,717	-11%
Recreation, Heritage, and Wilderness	261,719	261,222	252,880	-8,342	-3%
Wildlife & Fisheries Habitat Management	140,466	140,199	125,000	-15,199	-11%
Hazardous Fuels	0	0	354,288	354,288	0%
Grazing Management	56,856	56,748	50,600	-6,148	-11%
Forest Products	359,805	359,121	359,121	0	0%
Vegetation & Watershed Management	184,716	184,365	174,400	-9,965	-5%
Minerals and Geology Management	76,423	76,278	68,000	-8,278	-11%
Landownership Management	77,730	77,582	69,000	-8,582	-11%
Law Enforcement Operations	126,653	126,412	129,153	2,741	2%
<b>National Forest System Total</b>	<b>1,509,364</b>	<b>1,506,496</b>	<b>1,747,442</b>	<b>240,946</b>	<b>16%</b>
<b>Capital Improvement &amp; Maintenance</b>					
Facilities	71,390	71,254	11,750	-59,504	-84%
Roads	172,094	171,767	75,243	-96,524	-56%
Trails	77,530	77,383	12,700	-64,683	-84%
Deferred Maintenance and Infrastructure Improvement	3,150	3,144	0	-3,144	-100%
Legacy Roads and Trails	40,000	39,924	0	-39,924	-100%
<b>Capital Improvement &amp; Maintenance Total</b>	<b>364,164</b>	<b>363,472</b>	<b>99,693</b>	<b>-263,779</b>	<b>-73%</b>
<b>Land Acquisition</b>					
Land Acquisition	63,435	63,314	7,000	-56,314	-89%
Acquisition of Lands for National Forests Special Acts	950	948	850	-98	-10%
Acquisition of Lands to Complete Land Exchanges	216	216	192	-24	-11%
<b>Land Acquisition Total</b>	<b>64,601</b>	<b>64,478</b>	<b>8,042</b>	<b>-56,436</b>	<b>-88%</b>
<b>Other Appropriations</b>					
Range Betterment Fund	2,320	2,316	2,065	-251	-11%
Gifts, Donations, & Bequest for Forest & Rangeland					
Research	45	45	45	0	0%
Management of National Forest Lands for Subsistence Uses	2,500	2,495	2,225	-270	-11%
<b>Other Appropriations Total</b>	<b>4,865</b>	<b>4,856</b>	<b>4,335</b>	<b>-521</b>	<b>-11%</b>

FOREST SERVICE

	FY 2016 Enacted	FY 2017 Annualized CR	FY 2018 President's Budget	Program Changes	Percent of Change
<b>Wildland Fire Management</b>					
Preparedness	1,082,620	1,080,563	1,339,620	259,057	24%
Suppression	811,000	809,459	1,056,818	247,359	31%
Research and Development	19,795	19,757	17,600	-2,157	-11%
Joint Fire Science Program	6,914	6,901	0	-6,901	-100%
Hazardous Fuels	375,000	374,288	0	-374,288	-100%
State Fire Assistance	78,000	77,852	69,400	-8,452	-11%
Volunteer Fire Assistance	13,000	12,975	11,600	-1,375	-11%
<b>Wildland Fire Management Total</b>	<b>2,386,329</b>	<b>2,381,795</b>	<b>2,495,038</b>	<b>113,243</b>	<b>5%</b>
<b>FLAME Wildfire Suppression Reserve Fund</b>					
<b>Total, FLAME Wildfire Suppression Reserve Fund</b>	<b>823,000</b>	<b>821,436</b>	<b>0</b>	<b>-821,436</b>	<b>-100%</b>
<b>Discretionary Appropriations Total</b>					
	<b>5,680,346</b>	<b>5,669,553</b>	<b>4,731,560</b>	<b>-937,993</b>	<b>-17%</b>
Fire Transfer Repayment	0	0	0	0	0%
Suppression Cap Adjustment	0	0	0	0	0%
<b>Discretionary + Fire Transfer + Cap Adjustment</b>	<b>5,680,346</b>	<b>5,669,553</b>	<b>4,731,560</b>	<b>-937,993</b>	<b>-17%</b>
<b>Permanent Appropriations</b>					
Brush Disposal	11,801	20,000	16,000	-4,000	-20%
Hardwood Technology Transfer and Applied Research	0	0	0	0	0%
Timber Salvage Sales	26,994	45,000	30,000	-15,000	-33%
Timber Sales Pipeline Restoration	6,115	14,000	10,000	-4,000	-29%
Forest Botanical Products	1,602	1,602	1,602	0	0%
Stewardship Contracting	12,511	13,000	13,000	0	0%
Recreation Fees, Forest Service	70,408	70,408	70,408	0	0%
Timber Purchaser Election Road Construction	532	532	532	0	0%
Operation and Maintenance of Forest Service Quarters	5,127	5,127	5,127	0	0%
Roads and Trails for States	0	0	0	0	0%
Land Between the Lakes Management	4,254	4,254	4,254	0	0%
Midewin National Tallgrass Prairie Rental Fees	760	760	760	0	0%
Midewin National Tallgrass Prairie Restoration	0	0	0	0	0%
Quinault Special Management Area	2	2	2	0	0%
Restoration of Forest Lands and Improvements	67,275	67,275	67,275	0	0%
Commercial Filming and Still Photography Land Use Fee Retention	517	517	517	0	0%
Organizational Camps Program	1,000	1,000	1,000	0	0%
Cost Recovery (Land Uses)	5,122	5,122	5,122	0	0%
Licensee Program Smokey Bear	61	61	61	0	0%
Licensee Program Woodsy Owl	0	0	0	0	0%
Forest Service Go Green Program (Conservation)	19	19	19	0	0%
Conveyance of Administrative Sites	11,308	7,500	7,500	0	0%
Site-Specific Lands Acts	376	500	500	0	0%
Payments to State Funds	292,105	91,573	91,573	0	0%
<b>Permanent Appropriations Total</b>	<b>517,889</b>	<b>348,252</b>	<b>325,252</b>	<b>-23,000</b>	<b>-7%</b>
<b>Trust Funds</b>					
Cooperative Work - Knutson-Vandenberg	58,154	75,000	71,000	-4,000	-5%
Cooperative Work, Other	43,744	44,000	44,000	0	0%
Reforestation Trust Fund	31,769	32,000	27,000	-5,000	-16%
Land Between the Lakes Trust Fund	82	81	81	0	0%
<b>Trust Funds Total</b>	<b>133,749</b>	<b>151,081</b>	<b>142,081</b>	<b>-9,000</b>	<b>-6%</b>
<b>Grand Total, Forest Service</b>	<b>\$6,331,984</b>	<b>\$6,168,886</b>	<b>\$5,198,893</b>	<b>-\$969,993</b>	<b>-16%</b>

FOREST SERVICE

**Three-Year Summary of Full-Time Equivalents**

	FY 2016 Enacted	FY 2017 Annualized CR	FY 2018 President's Budget	Program Changes
<b>Forest &amp; Rangeland Research</b>				
Forest and Rangeland Research	1,746	1,746	1,554	-192
<b>Forest &amp; Rangeland Research Total</b>	<b>1,746</b>	<b>1,746</b>	<b>1,554</b>	<b>-192</b>
<b>State &amp; Private Forestry</b>				
Landscape Scale Restoration	0	0	0	0
Forest Health Management - Federal Lands	296	296	273	-23
Forest Health Management - Cooperative Lands	86	86	77	-9
Forest Stewardship	56	56	49	-7
Forest Legacy Program	27	27	0	-27
Community Forest and Open Space Conservation	0	0	0	0
Urban and Community Forestry	49	49	0	-49
International Forestry	40	40	36	-4
<b>State and Private Forestry Total</b>	<b>554</b>	<b>554</b>	<b>435</b>	<b>-119</b>
<b>National Forest System</b>				
Integrated Resource Restoration	1,450	1,450	1,287	-163
Collaborative Forest Landscape Restoration	268	268	0	-268
Land Management Planning	224	224	200	-24
Inventory and Monitoring	857	857	764	-93
Recreation, Heritage, and Wilderness	1,862	1,862	1,799	-63
Wildlife & Fisheries Habitat Management	749	749	667	-82
Hazardous Fuels	0	0	1,715	1,715
Grazing Management	428	428	381	-47
Forest Products	2,485	2,485	2,480	-5
Vegetation & Watershed Management	829	829	783	-46
Minerals and Geology Management	461	461	410	-51
Landownership Management	526	526	467	-59
Law Enforcement Operations	691	691	691	0
<b>National Forest System Total</b>	<b>10,830</b>	<b>10,830</b>	<b>11,644</b>	<b>814</b>
<b>Capital Improvement &amp; Maintenance</b>				
Facilities	307	307	256	-51
Roads	977	977	874	-103
Trails	583	583	532	-51
Deferred Maintenance and Infrastructure Improvement	1	1	0	-1
Legacy Roads and Trails	77	77	0	-77
<b>Capital Improvement &amp; Maintenance Total</b>	<b>1,945</b>	<b>1,945</b>	<b>1,662</b>	<b>-283</b>
<b>Land Acquisition</b>				
Land Acquisition	52	52	52	0
Acquisition of Lands for National Forests Special Acts	0	0	0	0
Acquisition of Lands to Complete Land Exchanges	0	0	0	0
<b>Land Acquisition Total</b>	<b>52</b>	<b>52</b>	<b>52</b>	<b>0</b>

FOREST SERVICE

	FY 2016 Enacted	FY 2017 Annualized CR	FY 2018 President's Budget	Program Changes
<b>Other Appropriations</b>				
Range Betterment Fund	6	6	5	-1
Gifts, Donations, & Bequest for Forest & Rangeland Research	0	0	0	0
Management of National Forest Lands for Subsistence Uses	12	12	11	-1
<b>Other Appropriations Total</b>	<b>18</b>	<b>18</b>	<b>16</b>	<b>-2</b>
<b>Wildland Fire Management</b>				
Preparedness	7,170	7,170	7,030	-140
Suppression	3,100	3,100	3,040	-60
Research and Development	99	99	93	-6
Joint Fire Science Program	8	8	0	-8
Hazardous Fuels	1,815	1,815	0	-1,815
State Fire Assistance	56	56	44	-12
Volunteer Fire Assistance	0	0	0	0
<b>Wildland Fire Management Total</b>	<b>12,248</b>	<b>12,248</b>	<b>10,207</b>	<b>-2,041</b>
<b>FLAME Wildfire Suppression Reserve Fund</b>				
<b>Total, FLAME Wildfire Suppression Reserve Fund</b>	<b>0</b>	<b>0</b>	<b>0</b>	<b>0</b>
<b>Discretionary Appropriations Total</b>	<b>27,393</b>	<b>27,393</b>	<b>25,570</b>	<b>-1,823</b>
Fire Transfer Repayment	0	0	0	0
Suppression Cap Adjustment	0	0	0	0
<b>Discretionary + Fire Transfer + Cap Adjustment</b>	<b>27,393</b>	<b>27,393</b>	<b>25,570</b>	<b>-1,823</b>
Permanent Funds	1,194	1,194	1,194	0
Trust Funds	741	741	741	0
<b>FTEs Only</b>				
Allocation	1,379	1,379	1,379	0
Discretionary Reimbursable	699	699	699	0
Working Capital Fund	606	606	606	0
<b>FTEs Only Total</b>	<b>2,684</b>	<b>2,684</b>	<b>2,684</b>	<b>0</b>
<b>Grand Total, Forest Service</b>	<b>32,012</b>	<b>32,012</b>	<b>30,189</b>	<b>-1,823</b>

FOREST SERVICE

Revenue, Receipts, and Transfers

	<b>FY 2016 Enacted</b>	<b>FY 2017 Estimated</b>	<b>FY 2018 President's Budget</b>	<b>1908 Act Receipt?</b>
<b>Revenue, Receipts, and Transfers</b>				
<b>Timber Management</b>				
National Forest Fund (NFF) Receipts	\$29,957	\$30,000	\$30,000	Yes
Mandatory Transfers from NFF:				
Timber Roads--Purchaser Election Program		(2,000)	(2,000)	
Acquisition of Lands for National Forests, Special Acts 1/ Ten-Percent Roads and Trails Fund 1/	(200)	(200)	(200)	
Ten-Percent Roads and Trails Fund 1/		(3,600)	(3,600)	
Cooperative Work - Knutson-Vandenberg Fund	210,171	39,000	40,000	Yes
Timber Salvage Sales	35,919	26,000	29,000	Yes
Timber Sales Pipeline Restoration Fund	5,151	6,000	6,000	Yes
Credits to Timber Purchasers (not receipts)				
Credits for Road Construction (sales before April 1, 1999)				Yes
Specified Road Costs	(15,476)	(15,000)	(15,000)	Yes
Brush Disposal	7,695	8,000	8,000	
Forest Botanical Products	1,570	1,000	1,000	
<b>Total Timber Management Receipts</b>	<b>\$290,463</b>	<b>\$110,000</b>	<b>\$114,000</b>	
<b>Total Timber Management Receipts and Credits</b>	<b>\$305,939</b>	<b>\$125,000</b>	<b>\$129,000</b>	
<b>Net Timber Management Deposits to NFF and Grasslands Fund</b>	<b>\$29,757</b>	<b>\$24,200</b>	<b>\$24,200</b>	
<b>Grazing Management</b>				
National Forest Fund (NFF) Receipts	\$8,486	\$8,000	\$8,000	Yes
Grasslands and Land Utilization Projects (LUP)	684	500	500	No
Mandatory Transfers from NFF & Grasslands & LUP's:				
Range Betterment Fund (50 Percent Grazing)	(3,273)	(3,000)	(3,000)	Yes
Acquisition of Lands for National Forests, Special Acts 1/ Ten-Percent Roads and Trails Fund 1/	(50)	(50)	(50)	
Ten-Percent Roads and Trails Fund 1/		(1,000)	(1,000)	
<b>Total Grazing Management Receipts</b>	<b>\$9,170</b>	<b>\$8,500</b>	<b>\$8,500</b>	
<b>Fund</b>	<b>\$5,847</b>	<b>\$4,450</b>	<b>\$4,450</b>	
<b>Minerals Management</b>				
National Forest Fund (NFF) Receipts	\$1,940	\$2,000	\$2,000	Yes
Minerals Receipts on Acquired Lands to NFF from ONNR	11,093	15,000	15,000	Yes
Grasslands and Land Utilization Projects (LUP) from ONNR	109,358	90,000	90,000	No
Mandatory Transfers from NFF:				
Acquisition of Lands for National Forests, Special Acts 1/ Ten-Percent Roads and Trails Fund 1/	(10)	(10)	(10)	
Ten-Percent Roads and Trails Fund 1/		(200)	(200)	
<b>Total Minerals Receipts</b>	<b>\$122,391</b>	<b>\$107,000</b>	<b>\$107,000</b>	
<b>Total Minerals Deposits to NFF and Grasslands Fund</b>	<b>\$122,381</b>	<b>\$106,790</b>	<b>\$106,790</b>	

FOREST SERVICE

Revenue, Receipts, and Transfers

	FY 2016 Enacted	FY 2017 Estimated	FY 2018 President's Budget	1908 Act Receipt?
<b>Revenue, Receipts, and Transfers</b>				
<b>Landownership Management</b>				
National Forest Fund (NFF) Receipts - Land Uses	\$21,281	\$22,000	\$22,000	Yes
National Forest Fund (NFF) Receipts - Power	7,416	8,000	8,000	Yes
Grasslands and Land Utilization Projects (LUP) -Land Uses & Power	441	200	200	No
Mandatory Transfers from NFF:				
Acquisition of Lands for National Forests, Special Acts 1/ Ten-Percent Roads and Trails Fund 1/	(180)	(200)	(200)	
Acquisition of Lands to Complete Land Exchanges	216	216	192	
Commercial Filming and Still Photography Land Use Fee Retention	672	671	671	
Organizational Camp Programs	682	682	682	
Cost Recovery (Administration of Rights-of-Way)	8,386	767	767	
<b>Total Landownership Management Receipts</b>	<b>\$38,653</b>	<b>\$32,336</b>	<b>\$32,312</b>	
<b>Total Landownership Management Deposits to NFF and Grasslands Fund</b>	<b>\$28,958</b>	<b>\$26,400</b>	<b>\$26,400</b>	
<b>Recreation Management Revenues and Receipts</b>				
National Forest Fund - Recreation, Admission, and User Fees	\$79,583	\$70,000	\$70,000	Yes
Mandatory Transfers from NFF:				
Acquisition of Lands for National Forests, Special Acts 1/ Ten-Percent Roads and Trails Fund 1/	(500)	(500)	(500)	
Recreation Fees Forest Service	86,303	68,795	69,795	
Land Between the Lakes (LBL) Management Fund	4,655	5,000	5,000	
Land Between the Lakes (LBL) Trust Fund	92	90	90	
<b>Total Recreation Management Receipts</b>	<b>\$170,633</b>	<b>\$143,885</b>	<b>\$144,885</b>	
<b>Net Recreation Management Deposits to NFF and Grasslands Fund</b>	<b>\$79,083</b>	<b>\$61,000</b>	<b>\$61,000</b>	
<b>Other Revenues and Receipts</b>				
Grasslands and Land Utilization Projects (LUP)- all other	\$10	\$10	\$10	No
Stewardship Contracting	15,746	14,000	14,000	
Cooperative Work, Other	84,139	30,000	30,000	
Midwin National Tallgrass Prairie Rental Fees	755	1,000	1,000	
Midwin National Tallgrass Restoration Fees				
Licensee Program Smokey Bear	99	98	98	
Licensee Program Woodsy Owl	7	7	7	
Forest Service Go Green Program	34	33	33	
Operation and Maintenance of Forest Service Quarters	9,225	9,000	10,000	
Conveyance of Administrative Sites	16,901	8,000	1,000	
Site-Specific Land Acts	950	948	850	
Restoration of Forest Lands and Improvements	10,607	20,000	11,000	
Gifts, Donations, and Bequests for Research	50	50	50	
<b>Total Other Receipts</b>	<b>\$138,523</b>	<b>\$83,146</b>	<b>\$68,048</b>	
<b>Total Other Deposits to Grasslands Fund</b>	<b>\$10</b>	<b>\$10</b>	<b>\$10</b>	

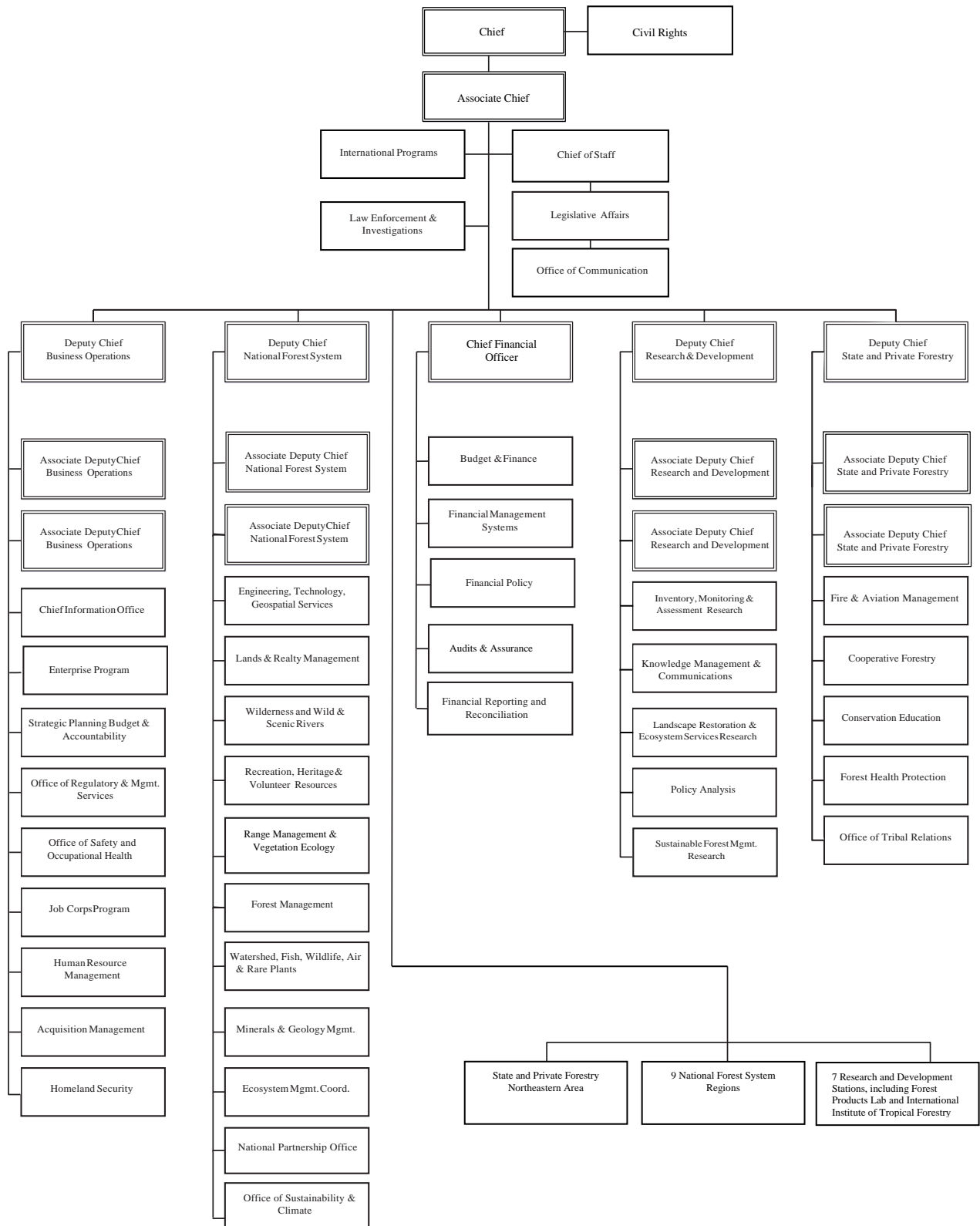
FOREST SERVICE

Revenue, Receipts, and Transfers

Revenue, Receipts, and Transfers	FY 2016 Enacted	FY 2017 Estimated	FY 2018 President's Budget	1908 Act Receipt?
<b>Total Forest Service Revenue and Receipts</b>	<b>\$769,833</b>	<b>\$484,867</b>	<b>\$474,745</b>	
Total Deposits to NFF before Mandatory Transfers	159,756	155,000	155,000	
Total Deposits to Grasslands Fund before Mandatory Transfers	110,493	90,710	90,710	
Total Mandatory Transfers	(4,213)	(22,860)	(22,860)	
<b>Total Deposits to NFF &amp; Grasslands after Mandatory Transfers</b>	<b>\$266,036</b>	<b>\$222,850</b>	<b>\$222,850</b>	
<b>Deposits &amp; Credits Basis for Act of 1908 (25% Fund)</b>	<b>\$525,873</b>	<b>\$316,710</b>	<b>\$320,710</b>	
<b>Payments and Transfers for States and Counties.</b>				
National Forest Fund Payments to States Available	\$100,049			
Payments to States Act of 1908		50,000	50,000	
Payments to States Supplemental	145,400			
Payments to Minnesota Counties	5,732	6,150	6,150	
Payments to Counties, Bankhead-Jones Farm Tenant Act	26,501	21,000	21,000	
Secure Payments for States	14,295	14,295	14,295	
Secure Payments for States/Repayment per DOT	128	128	128	
<b>Total Payments and Transfers for States and Counties</b>	<b>\$292,105</b>	<b>\$91,573</b>	<b>\$91,573</b>	



# FOREST SERVICE



FOREST SERVICE

Available Funds and Staff Years (SY)  
(Dollars in thousands)

Program	2016 Actual		2017 Annualized CR		Inc. or Dec.		FY 2018 Estimate	
	Amount	SYs	Amount	SYs	Amount	SYs	Amount	SYs
<b>Discretionary Appropriations:</b>								
Forest and Rangeland Research.....	\$291,000	1,746	\$290,447	1,746	-\$31,447	-192	\$259,000	1,554
State and Private Forestry.....	237,023	554	236,573	554	-118,563	-119	118,010	435
National Forest Systems.....	1,509,364	10,830	1,506,496	10,830	+240,946	+814	1,747,442	11,644
Capital Improvement and Maintenance.....	364,164	1,945	363,472	1,945	-263,779	-	99,693	1,662
Wildland Fire Management.....	3,086,329	12,248	2,381,795	12,248	+113,243	-2,041	2,495,038	10,207
Land Acquisition .....	64,385	52	64,478	52	-56,436	-	8,042	52
Other Appropriations.....	5,773	18	4,856	18	-521	-2	4,335	16
<b>Subtotal.....</b>	<b>5,558,038</b>	<b>27,393</b>	<b>4,848,117</b>	<b>27,393</b>	<b>-116,557</b>	<b>-1,540</b>	<b>4,731,560</b>	<b>25,570</b>
<b>Mandatory Appropriations:</b>								
Permanent Funds.....	567,087	1,194	266,203	1,194	-13,187	0	255,203	1,194
Trust Funds.....	324,401	741	99,090	741	+1,000	-	100,090	741
<b>Subtotal.....</b>	<b>891,489</b>	<b>1,935</b>	<b>365,293</b>	<b>1,935</b>	<b>-12,187</b>	<b>-</b>	<b>355,293</b>	<b>1,935</b>
<b>Total Appropriation .....</b>	<b>6,449,527</b>	<b>29,328</b>	<b>5,213,410</b>	<b>29,328</b>	<b>-126,557</b>	<b>-1,823</b>	<b>5,086,853</b>	<b>27,505</b>
Sequestration.....	-3,947	0	2,679	0	-2,679	-	0	0
Transfers In.....	1,223,550	107	844,401	107	-826,801	-14	17,600	93
Transfers Out.....	-553,923	-107	-67,007	-107	+49,407	+14	-17,600	-93
<b>Adjusted Appropriation.....</b>	<b>7,115,207</b>	<b>29,328</b>	<b>5,993,482</b>	<b>29,328</b>	<b>-906,629</b>	<b>-1,823</b>	<b>5,086,853</b>	<b>27,505</b>
Bal. Available, SOY.....	721,943	-	1,391,376	-	-267,810	-	1,123,566	-
Recoveries, Other (Net).....	305,787	-	-	-	-	-	-	-
<b>Total Available.....</b>	<b>8,142,937</b>	<b>29,328</b>	<b>7,384,858</b>	<b>29,328</b>	<b>-1,174,439</b>	<b>-1,823</b>	<b>6,210,419</b>	<b>27,505</b>
Lapsing Balances.....	-26	0	-373	0	+83	-	-290	0
Bal. Available, EOY.....	-1,391,376	-	-1,123,566	-	+112,330	-	-1,011,236	-
<b>Total Obligations.....</b>	<b>\$6,751,536</b>	<b>29,328</b>	<b>\$6,260,919</b>	<b>29,328</b>	<b>-\$1,062,026</b>	<b>-1,823</b>	<b>\$5,198,893</b>	<b>27,505</b>

Notes:

FY16 Wildland Fire Management appropriation includes fire transfer repayment and excludes FLAME

FY17 Wildland Fire Management appropriation excludes FLAME

Mandatory Appropriations show budget authority, not program level

Discretionary reimbursable funds are excluded

FOREST SERVICE

Permanent Positions by Grade and Staff Years

Item	2016 Actual Total			2017 Estimate Total			2018 Estimate Total		
	D.C.	Field	Total	D.C.	Field	Total	D.C.	Field	Total
SES.....	36	48	84	36	48	84	34	45	79
GS-15.....	114	374	488	114	374	488	108	353	461
GS-14.....	200	658	858	200	658	858	189	621	810
GS-13.....	180	2,462	2,642	180	2,462	2,642	170	2,322	2,492
GS-12.....	92	3,706	3,798	92	3,706	3,798	87	3,495	3,582
GS-11.....	59	5,653	5,712	59	5,653	5,712	56	5,331	5,387
GS-10.....	0	471	471	0	471	471	0	444	444
GS-9.....	59	5,622	5,681	59	5,622	5,681	56	5,302	5,358
GS-8.....	2	1,868	1,870	2	1,868	1,870	2	1,762	1,764
GS-7.....	19	5,036	5,055	19	5,036	5,055	18	4,749	4,767
GS-6.....	7	2,743	2,750	7	2,743	2,750	7	2,587	2,594
GS-5.....	9	5,304	5,313	9	5,304	5,313	8	5,002	5,010
GS-4.....	5	3,726	3,731	5	3,726	3,731	5	3,514	3,519
GS-3.....	1	1,490	1,491	1	1,490	1,491	1	1,405	1,406
GS-2.....	2	117	119	2	117	119	2	110	112
GS-1.....	0	14	14	0	14	14	0	13	13
<b>Total Perm. Positions.....</b>	<b>785</b>	<b>39,292</b>	<b>40,077</b>	<b>785</b>	<b>39,292</b>	<b>40,077</b>	<b>743</b>	<b>37,055</b>	<b>37,798</b>
<b>Unfilled, EOY</b>	<b>27</b>	<b>1,423</b>	<b>1,450</b>	<b>27</b>	<b>1,423</b>	<b>1,450</b>	<b>25</b>	<b>1,342</b>	<b>1,367</b>
<b>Total, Perm. Full- Time Employment, EOY.....</b>	<b>758</b>	<b>37,869</b>	<b>38,627</b>	<b>758</b>	<b>37,869</b>	<b>38,627</b>	<b>718</b>	<b>35,713</b>	<b>36,431</b>
<b>Staff Years Est.....</b>	<b>750</b>	<b>31,262</b>	<b>32,012</b>	<b>750</b>	<b>31,262</b>	<b>32,012</b>	<b>730</b>	<b>29,459</b>	<b>30,189</b>

FOREST SERVICE

Motor Vehicle Fleet  
 Size, Composition, and Annual Operating Costs of Vehicle Fleet  
 (Dollars in Thousands)

Fiscal Year	Number of Vehicles by Type *								Annual Operating Costs**
	Sedans and Station Wagons	Light Trucks, SUVs, and Vans		Medium Duty Vehicles	Ambulances	Buses	Heavy Duty Vehicles	Total Number of Vehicles	
		4x2	4x4						
2016	628	667	11,165	7,856	-	101	2,236	22,653	\$57,212
Change									
2017	605	660	11,113	7,788	-	99	2,229	22,494	\$59,500
Change	-23	-7	-52	-68	-	-2	-7	-159	\$2,288
2018	797	658	11,096	7,761	-	99	2,223	22,634	\$61,880
Change	192	-2	-17	-27	-	-	-6	140	\$2,380

\* Numbers include vehicles owned by the agency and leased from commercial sources or GSA.

\*\* Excludes acquisition costs and gains from sale of vehicles as shown in FAST.

FOREST SERVICE

Lead-Off Tabular Statement  
Current Law

Forest and Rangeland Research

Budget Estimate, 2018	\$259,000,000
2017 Annualized Continuing Resolution	290,447,000
Change in Appropriation	<u><u>-31,447,000</u></u>

State and Private Forestry

Budget Estimate, 2018	\$118,010,000
2017 Annualized Continuing Resolution	236,573,000
Change in Appropriation	<u><u>-118,563,000</u></u>

National Forest System

Budget Estimate, 2018	\$1,747,442,000
2017 Annualized Continuing Resolution	1,506,496,000
Change in Appropriation	<u><u>240,946,000</u></u>

National Forest System - Proposed Legislation

Budget Estimate, Current Law 2018	\$1,747,442,000
Change Due to Proposed Legislation <sup>1</sup>	4,500,000
Net 2018 Request	<u><u>1,751,942,000</u></u>

Capital Improvement & Maintenance

Budget Estimate, 2018	\$99,693,000
2017 Annualized Continuing Resolution	363,472,000
Change in Appropriation	<u><u>-263,779,000</u></u>

---

<sup>1</sup> Communication site fee retention

FOREST SERVICE

Land Acquisition

Budget Estimate, 2018	\$8,042,000
2017 Annualized Continuing Resolution	<u>64,478,000</u>
Change in Appropriation	<u><u>-56,436,000</u></u>

Other Appropriations

Budget Estimate, 2018	\$4,335,000
2017 Annualized Continuing Resolution	<u>4,856,000</u>
Change in Appropriation	<u><u>-521,000</u></u>

Wildland Fire Management

Budget Estimate, 2018	\$2,495,038,000
2017 Annualized Continuing Resolution	<u>2,381,795,000</u>
Change in Appropriation	<u><u>113,243,000</u></u>

FLAME

Budget Estimate, 2018	\$0
2017 Annualized Continuing Resolution	<u>821,436,000</u>
Change in Appropriation	<u><u>-821,436,000</u></u>

Permanent Funds

Budget Estimate, 2018	\$325,252,000
2017 Annualized Continuing Resolution	<u>348,252,000</u>
Change in Appropriation	<u><u>-23,000,000</u></u>

Trust Funds

Budget Estimate, 2018	\$142,081,000
2017 Annualized Continuing Resolution	<u>151,081,000</u>
Change in Appropriation	<u><u>-9,000,000</u></u>

FOREST SERVICE

Summary of Increases and Decreases  
(dollars in thousands)

Program	2015 Actual	2016 Change	2017 Change	2018 Change	2018 President's Budget
<b>Discretionary Appropriations:</b>					
<b>Forest and Rangeland Research</b>					
Forest and Rangeland Research	\$296,000	-\$5,000	-\$553	-\$31,447	\$259,000
<b>Forest and Rangeland Research Total</b>	296,000	-\$5,000	-\$553	-\$31,447	259,000
<b>State and Private Forestry</b>					
Landscape Scale Restoration	14,000	-	-27	-13,973	-
Forest Health Mgmt. - Fed Lands	58,922	-	-112	-4,605	54,205
Forest Health Mgmt. - Coop Lands	45,655	-4,977	-77	-4,416	36,185
Forest Stewardship	23,036	-	-44	-2,492	20,500
Forest Legacy Program	53,000	9,347	-118	-62,229	-
Community Forest & Open Space Cons	2,000	-	-4	-1,996	-
Urban and Community Forestry	28,040	-	-53	-27,987	-
International Forestry	8,000	-	-15	-865	7,120
<b>State and Private Forestry Total</b>	232,653	4,370	-450	-118,563	118,010
<b>National Forest System</b>					
Integrated Resource Restoration	-	-	-	-	-
Collaborative Forest Landscape Rest	40,000	-	-76	-39,924	-
Collaborative Forest Landscape Rest	2,000	-2,000	-	-	-
Land Management Planning	37,754	-756	-70	-3,928	33,000
Inventory and Monitoring	151,019	-3,021	-281	-15,717	132,000
Recreation, Heritage, and Wilderness	261,719	0	-497	-8,342	252,880
Wildlife & Fisheries Habitat Management	140,466	0	-267	-15,199	125,000
Hazardous Fuels	-	-	-	354,288	354,288
Grazing Management	55,356	1,500	-108	-6,148	50,600
Forest Products	339,130	20,675	-684	-	359,121
Vegetation & Watershed Management	184,716	-	-351	-9,965	174,400
Minerals and Geology Management	76,423	-	-145	-8,278	68,000
Landownership Management	77,730	-	-148	-8,582	69,000
Law Enforcement Operations	126,653	-	-241	2,741	129,153
Valles Caldera National Preserve	3,364	-3,364	-	-	-
<b>National Forest System Total</b>	1,496,330	13,034	-2,868	240,946	1,747,442
<b>Capital Improvement and Maintenance</b>					
Facilities	71,600	-210	-136	-59,504	11,750
Roads	168,094	4,000	-327	-96,524	75,243
Trails	77,530	-	-147	-64,683	12,700
Deferred Maintenance	3,150	-	-6	-3,144	-
Legacy Roads and Trails	40,000	-	-76	-39,924	-
<b>Capital Improvement and Maintenance Total</b>	360,374	3,790	-692	-263,779	99,693
<b>Land Acquisition</b>					
Land Acquisition	47,500	15,935	-121	-56,314	7,000
Acquisition of Lands for National Forest Special Acts	950	-	-2	-98	850
Acquisition of Lands to Complete Land Exchanges	216	-	-	-24	192
<b>Land Acquisition Total</b>	48,666	15,935	-123	-56,436	8,042
<b>Other Appropriations</b>					
Range Betterment	2,320	0	-4	-251	2,065

FOREST SERVICE

	2015 Actual	2016 Change	2017 Change	2018 Change	2018 President's Budget
Gifts, Don., & Beq for Forest & Rangeland Research	45	-	-	-	45
Management of National Forest Lands for Subsistence Uses	2,500	-	-5	-270	2,225
<b>Other Appropriations Total</b>	4,865	-	-9	-521	4,335
<b>Wildland Fire Management</b>					
Preparedness	1,145,840	-63,220	-2,057	259,057	1,339,620
Suppression	708,000	103,000	-1,541	247,359	1,056,818
Hazardous Fuels	361,749	13,251	-712	-374,288	-
Research and Development	19,795	-	-38	-2,157	17,600
Joint Fire Science Program	6,914	-	-13	-6,901	-
State Fire Assistance	78,000	-	-148	-8,452	69,400
Volunteer Fire Assistance	13,000	-	-25	-1,375	11,600
<b>Wildland Fire Management Total</b>	2,333,298	53,031	-4,534	113,243	2,495,038
<b>FLAME Wildfire Suppression Reserve Fund</b>					
Total, FLAME Wildfire Suppression Reserve Fund	303,060	519,940	-1,564	-821,436	-
<b>Discretionary Appropriation Total</b>	\$5,073,246	\$607,100	-\$10,793	-\$937,993	\$4,731,560
Suppression Cap Adjustment	-	-	-	-	-
Discretionary + Fire Transfer + Cap Adjustment	\$5,073,246	\$5,680,346	-\$10,793	\$937,993	\$4,731,560
<b>Permanent Appropriations:</b>					
Brush Disposal	9,125	2,676	8,199	-4,000	16,000
Hardwood Technology Transfer and Applied Research	3	-3	-	-	-
Timber Salvage Sales	29,626	-2,632	18,006	-15,000	30,000
Timber Sales Pipeline Restoration	4,509	1,606	7,885	-4,000	10,000
Forest Botanical Products	1,662	-60	-	-	1,602
Stewardship Contracting	9,256	3,255	489	-	13,000
Recreation Fees, Forest Service	64,476	5,932	-	-	70,408
Timber Purchaser Election Road Construction	142	390	-	-	532
Operation and Maintenance of Forest Service Quarters	8,317	-3,190	-	-	5,127
Roads and Trails for States	-	-	-	-	-
Land Between the Lakes Management	3,512	742	-	-	4,254
Midewin National Tallgrass Prairie Rental Fee	634	126	-	-	760
Midewin National Tallgrass Prairie Restoration	-	-	-	-	-
Valles Caldera	105	-105	-	-	-
Quinault Special Management Area	10	-8	-	-	2
Restoration of Forest Lands & Improvements	61,071	6,204	-	-	67,275
Commercial Filming and Still Photography Land	404	113	-	-	517
Organizational Camps Programs	469	531	-	-	1,000
Cost Recovery (Administration of Rights-of-Way)	4,925	197	-	-	5,122
Licensee Program Smokey Bear	54	7	-	-	61
Licensee Program Woodsy Owl	-	-	-	-	-
Forest Service Go Green Program (Conservation)	26	-7	-	-	19
Conveyance of Administrative Sites	3,606	7,702	-3,808	-	7,500
Site-Specific Lands Acts	4,262	-3,886	124	-	500
Payments to State Funds	318,326	-26,221	-200,532	-	91,573
<b>Permanent Appropriations Total:</b>	\$524,520	-\$6,631	-\$169,637	-\$23,000	\$325,252
<b>Trust Funds</b>					
Cooperative Work - Knutson-Vandenberg	210,901	-152,747	16,846	-4,000	71,000
Cooperative Work, Other	88,000	-44,256	256	-	44,000



FOREST SERVICE

		<b>2016 Change</b>	<b>2017 Change</b>	<b>2018 Change</b>	<b>2018 President's Budget</b>
Reforestation Trust Fund	32,000	-231	231	-5,000	27,000
Land Between the Lakes Trust Fund	28	54	-1	-	81
Trust Funds Total	\$330,929	-\$197,180	\$17,332	-\$9,000	\$142,081
<b>Grand Total, Forest Service</b>	<b>\$5,928,695</b>	<b>\$403,289</b>	<b>-\$163,098</b>	<b>-\$969,993</b>	<b>\$5,198,893</b>

FOREST SERVICE

Forest and Rangeland Research  
 Project Statement  
 Adjusted Appropriations Detail and Staff Years (SYs)  
 (Dollars in thousands)

Program	2016 Actual		2017 Annualized CR		Inc. or Dec.		FY 2018 Estimate	
	Amount	SYs	Amount	SYs	Amount	SYs	Amount	SYs
<b>Discretionary Appropriations:</b>								
Forest and Rangeland Research.....	\$260,317	1,746	\$246,400	1,746	-\$26,190	-192	\$220,210	1,554
National Fire Plan.....	20,595	99	19,757	99	-2,157	-6	17,600	93
Joint Fire Science.....	6,334	8	6,901	8	-6,901	-8	-	-
Forest and Rangeland Research - Other.....	43,917	-	44,047	-	-5,257	-	38,790	-
<b>Total Adjusted Approp.....</b>	<b>331,163</b>	<b>1,853</b>	<b>317,105</b>	<b>1,853</b>	<b>-40,505</b>	<b>-206</b>	<b>276,600</b>	<b>1,647</b>
<b>Rescissions, Transfers, and Seq. (Net).....</b>								
	-40,163	-107	-26,658	-107	+9,058	+14	-17,600	-93
<b>Total Appropriation.....</b>	<b>291,000</b>	<b>1,746</b>	<b>290,447</b>	<b>1,746</b>	<b>-31,447</b>	<b>-192</b>	<b>259,000</b>	<b>1,554</b>
<b>Transfers In:</b>								
Fire Transfer Repayment.....	16,500	-	-	-	-	-	-	-
National Fire Plan.....	19,795	99	19,757	99	-2,157	-6	17,600	93
Joint Fire Science.....	6,914	8	6,901	8	-6,901	-8	-	-
<b>Total.....</b>	<b>43,209</b>	<b>107</b>	<b>26,658</b>	<b>107</b>	<b>-9,058</b>	<b>-14</b>	<b>17,600</b>	<b>93</b>
<b>Transfers Out:</b>								
Joint Fire Science.....	-3,046	-	-	-	-	-	-	-
<b>Total.....</b>	<b>-3,046</b>	<b>-</b>	<b>-</b>	<b>-</b>	<b>-</b>	<b>-</b>	<b>-</b>	<b>-</b>
Bal. Available, SOY.....	9,531	-	12,510	-	-12,510	-	0	-
Recoveries, Other (Net).....	4,917	-	-	-	-	-	-	-
<b>Total Available.....</b>	<b>345,611</b>	<b>1,853</b>	<b>329,615</b>	<b>1,853</b>	<b>-53,015</b>	<b>-206</b>	<b>276,600</b>	<b>1,647</b>
Bal. Available, EOY.....	-12,510	-	-0	-	-	-	-0	-
<b>Total Obligations.....</b>	<b>\$333,101</b>	<b>1,853</b>	<b>\$329,615</b>	<b>1,853</b>	<b>-\$53,015</b>	<b>-206</b>	<b>\$276,600</b>	<b>1,647</b>

Notes:

- Other includes cost pool authority
- Excludes reimbursable funds
- Bal. Available EOY is expressed as a negative value for calculation purposes only

FOREST SERVICE

Forest and Rangeland Research  
Project Statement  
 Obligations Detail and Staff Years (SYs)  
 (Dollars in thousands)

Program	2016 Actual		2017 Annualized CR		Inc. or Dec.		FY 2018 Estimate	
	Amount	SYs	Amount	SYs	Amount	SYs	Amount	SYs
<b>Discretionary Obligations:</b>								
Forest and Rangeland Research.....	\$264,418	1,746	\$252,359	1,746	-\$32,149	-192	\$220,210	1,554
National Fire Plan.....	19,701	99	21,856	99	-4,256	-6	17,600	93
Joint Fire Science.....	4,967	8	11,353	-	-11,353	-	-	-
Research - Other.....	44,014	-	44,047	-	-5,257	-	38,790	-
<b>Total.....</b>	<b>333,101</b>	<b>1,853</b>	<b>329,615</b>	<b>1,845</b>	<b>-53,015</b>	<b>-198</b>	<b>276,600</b>	<b>1,647</b>
Bal. Available, EOY.....	12,510	-	0	-	-	-	0	-
<b>Total Available.....</b>	<b>345,611</b>	<b>1,853</b>	<b>329,615</b>	<b>1,845</b>	<b>-53,015</b>	<b>-198</b>	<b>276,600</b>	<b>1,647</b>
Transfers In.....	-43,209	-107	-26,658	-107	+9,058	+14	-17,600	-93
Transfers Out.....	3,046	-	-	-	-	-	-	-
Bal. Available, SOY.....	-9,531	-	-12,510	-	+12,510	-	-	-
Recoveries, Other (Net).....	-4,917	-	-	-	-	-	-	-
<b>Total Appropriation.....</b>	<b>\$291,000</b>	<b>1,746</b>	<b>\$290,447</b>	<b>1,738</b>	<b>-\$31,447</b>	<b>-184</b>	<b>\$259,000</b>	<b>1,554</b>

Notes:

Other includes cost pool spending

Excludes reimbursable funds

Bal. Available, SOY and Recoveries expressed as negative values for calculation purposes only

FOREST SERVICE

State and Private Forestry  
Project Statement  
 Adjusted Appropriations Detail and Staff Years (SYs)  
 (Dollars in thousands)

Program	2016 Actual		2017 Annualized CR		Inc. or Dec.		FY 2018 Estimate	
	Amount	SYs	Amount	SYs	Amount	SYs	Amount	SYs
<b>Discretionary Appropriations:</b>								
Landscape Scale Restoration.....	\$14,201	-	\$13,973	-	-\$13,973	-	\$ -	-
FHM - Federal Lands.....	54,925	296	45,962	296	-1,772	-23	44,190	273
FHM - Cooperative Lands.....	41,648	86	37,535	86	-4,016	-9	33,519	77
Forest Stewardship Program.....	23,727	56	21,013	56	-2,213	-7	18,800	49
Forest Legacy Program.....	79,518	27	62,229	27	-62,229	-27	-	-
Community Forest & Open Space Conservation	2,955	-	1,996	-	-1,996	-	-	-
Urban and Community Forestry.....	26,446	49	26,008	49	-26,008	-49	-	-
International Programs.....	8,735	40	7,028	40	-692	-4	6,336	36
State and Private Forestry - Other.....	20,193	-	19,223	-	-4,058	-	15,165	-
<b>Total Adjusted Approp.....</b>	<b>272,348</b>	<b>554</b>	<b>234,967</b>	<b>554</b>	<b>-116,957</b>	<b>-119</b>	<b>118,010</b>	<b>435</b>
<b>Rescissions, Transfers, and Seq. (Net).....</b>								
	-35,325		1,606		-1,606	-	-	
<b>Total Appropriation.....</b>	<b>237,023</b>	<b>554</b>	<b>236,573</b>	<b>554</b>	<b>-118,563</b>	<b>-119</b>	<b>118,010</b>	<b>435</b>
<b>Transfers In:</b>								
Fire Transfer Repayment.....	35,257		-		-	-	-	
International Programs (SPMF).....	1,677		-		-	-	-	
<b>Total.....</b>	<b>36,934</b>		<b>0</b>		<b>-</b>	<b>-</b>	<b>0</b>	<b>0</b>
<b>Transfers Out:</b>								
Forest Health to Bureau of Indian Affairs.....	-620		-619		+619	-	-	-
Forest Health to Bureau of Land Management	-273		-272		+272	-	-	-
Forest Health to Fish and Wildlife Service.....	-230		-230		+230	-	-	-
Forest Health to National Park Service.....	-446		-445		+445	-	-	-
Forest Health to Army Corps of Engineers.....	-10		-10		+10	-	-	-
Forest Health to Air Force Academy.....	-30		-30		+30	-	-	-
<b>Total.....</b>	<b>-1,609</b>		<b>-1,606</b>		<b>+1,606</b>	<b>-</b>	<b>0</b>	
Bal. Available, SOY.....	20,947		69,348		-37,441		31,907	
Recoveries, Other (Net).....	17,279		-		-		-	
<b>Total Available.....</b>	<b>310,574</b>		<b>304,315</b>	<b>554</b>	<b>-154,398</b>	<b>-119</b>	<b>149,917</b>	<b>435</b>
Bal. Available, EOY.....	-69,348		-31,907		-	-	-31,907	
<b>Total Obligations.....</b>	<b>\$241,226</b>	<b>554</b>	<b>\$272,408</b>	<b>554</b>	<b>-\$154,398</b>	<b>-119</b>	<b>\$118,010</b>	<b>435</b>

Notes:

- Other includes cost pool authority
- Excludes reimbursable funds
- Bal. Available EOY is expressed as a negative value for calculation purposes only

FOREST SERVICE

State and Private Forestry  
Project Statement  
 Obligations Detail and Staff Years (SYs)  
 (Dollars in thousands)

Program	2016 Actual		2017 Annualized CR		Inc. or Dec.		FY 2018 Estimate	
	Amount	SYs	Amount	SYs	Amount	SYs	Amount	SYs
Discretionary Obligations:								
Landscape Scale Restoration.....	\$14,201	-	\$13,973	-	-\$13,973	-	\$ -	-
FHM - Federal Lands.....	52,774	296	53,938	296	-9,748	-23	44,190	273
FHM - Cooperative Lands.....	39,191	86	44,144	86	-10,625	-9	33,519	77
Forest Stewardship Program.....	23,336	56	24,203	56	-5,403	-7	18,800	49
Forest Legacy Program.....	66,707	27	62,229	27	-62,229	-27	-	-
Community Forest & Open Space Conservation	2,952	-	2,316	-	-2,316	-	-	-
Urban and Community Forestry.....	25,905	49	29,575	49	-29,575	-49	-	-
International Programs.....	-4,094	40	16,144	40	-9,808	-4	6,336	36
State and Private Forestry - Other.....	20,254	-	25,886	-	-10,721	-	15,165	-
Total Obligations.....	241,226	554	272,408	554	-154,398	-119	118,010	435
Bal. Available, EOY.....	69,348		31,907		-	-	31,907	
Total Available.....	310,574	554	304,315	554	-154,398	-119	149,917	435
Transfers In.....	-36,934		-		-	-	-	-
Transfers Out.....	1,609		1,606		-1,606	-	-	-
Bal. Available, SOY.....	-20,947	-	-69,348	-	+37,441	-	-31,907	-
Recoveries, Other (Net).....	-17,279	-	-	-	-	-	-	-
Total Appropriation.....	\$237,023	554	\$236,573	554	-\$118,563	-119	\$118,010	435

Notes:

Other includes cost pool spending and prior year activity in obsolete programs

Excludes reimbursable funds

Bal. Available, SOY and Recoveries expressed as negative values for calculation purposes only

FOREST SERVICE

National Forest Systems  
Project Statement  
 Adjusted Appropriations Detail and Staff Years (SYs)  
 (Dollars in thousands)

Program	2016 Actual		2017 Annualized CR		Inc. or Dec.		FY 2018 Estimate	
	Amount	SYs	Amount	SYs	Amount	SYs	Amount	SYs
<b>Discretionary Appropriations:</b>								
Integrated Resource Restoration Pilot.....	\$155,990	1,450	\$154,508	1,450	+\$4,352	-163	\$158,860	1,287
Collaborative Forest Landscape Restoration..	27,702	268	29,639	268	-29,639	-268	-	-
Land Management Planning.....	26,760	224	28,752	224	-2,999	-24	25,753	200
Hazardous Fuels.....	-	-	-	-	+262,152	+1,715	262,152	1,715
Inventory and Monitoring.....	116,357	857	114,948	857	-12,257	-93	102,691	764
Recreation, Heritage, & Wilderness.....	174,743	1,862	174,092	1,862	-3,285	-63	170,807	1,799
Wildlife & Fisheries Habitat Management.....	77,879	749	76,897	749	-12,739	-82	64,158	667
Grazing Management.....	39,379	428	39,244	428	-4,236	-47	35,008	381
Forest Products.....	221,886	2,485	196,648	2,485	-5,552	-5	191,096	2,480
Vegetation & Watershed Management.....	98,421	829	98,971	829	-14,620	-46	84,351	783
Minerals & Geology Management.....	56,845	461	57,687	461	-6,235	-51	51,452	410
Landownership Management.....	55,083	526	56,882	526	-6,303	-59	50,579	467
Law Enforcement Operations.....	108,470	691	109,186	691	+1,886	-	111,072	691
Valles Caldera.....	-356	-	-	-	-	-	-	-
Nation Forest Systems - Other.....	419,732	-	407,785	-	+31,678	-	439,463	-
<b>Total Adjusted Approp.....</b>	<b>1,578,891</b>	<b>10,830</b>	<b>1,545,239</b>	<b>10,830</b>	<b>202,203</b>	<b>814</b>	<b>1,747,442</b>	<b>11,644</b>
<b>Rescissions, Transfers,</b>								
<b>and Seq. (Net).....</b>	<b>-69,527</b>	<b>-</b>	<b>-38,743</b>	<b>-</b>	<b>38,743</b>	<b>-</b>	<b>-</b>	<b>-</b>
<b>Total Appropriation.....</b>	<b>1,509,364</b>	<b>10,830</b>	<b>1,506,496</b>	<b>10,830</b>	<b>240,946</b>	<b>814</b>	<b>1,747,442</b>	<b>11,644</b>
<b>Transfers In:</b>								
Fire Transfer Repayment.....	31,800		-		-	-	-	-
IRR From Capital Improvement & Maintenance	14,743		14,743		-14,743	-	-	-
IRR From Wildfire Management.....	24,000		24,000		-24,000	-	-	-
<b>Total.....</b>	<b>70,543</b>		<b>38,743</b>		<b>-38,743</b>	<b>-</b>	<b>-</b>	<b>-</b>
<b>Transfers Out:</b>								
Valles Caldera to DOI.....	-1,016				-	-		
<b>Total.....</b>	<b>-1,016</b>		<b>-</b>		<b>-</b>	<b>-</b>	<b>-</b>	<b>-</b>
Bal. Available, SOY.....	38,785		22,896		-21,822		1,074	
Recoveries, Other (Net).....	29,114				-			
<b>Total Available.....</b>	<b>1,646,789</b>	<b>10,830</b>	<b>1,568,135</b>	<b>10,830</b>	<b>180,381</b>	<b>814</b>	<b>1,748,516</b>	<b>11,644</b>
Bal. Available, EOY.....	-22,896		-1,074		-	-	-1,074	
<b>Total Obligations.....</b>	<b>\$1,623,893</b>	<b>10,830</b>	<b>\$1,567,061</b>	<b>10,830</b>	<b>+\$180,381</b>	<b>+814</b>	<b>\$1,747,442</b>	<b>11,644</b>

Notes:

Other includes cost pool authority

Excludes reimbursable funds

Bal. Available EOY is expressed as a negative value for calculation purposes only

FOREST SERVICE

National Forest Systems  
Project Statement  
 Obligations Detail and Staff Years (SYs)  
 (Dollars in thousands)

Program	2016 Actual		2017 Annualized CR		Inc. or Dec.		FY 2018 Estimate	
	Amount	SYs	Amount	SYs	Amount	SYs	Amount	SYs
<b>Discretionary Obligations:</b>								
Integrated Resource Restoration Pilot.....	\$161,269	1,450	\$160,337	1,450	-\$160,337	-163	\$ -	1,287
Collaborative Forest Landscape Restoration..	42,893	268	33,979	268	-\$33,979	-268	0	-
Land Management Planning.....	26,504	224	28,752	224	+\$4,248	-24	33,000	200
Hazardous Fuels.....	-	-	-	-	+\$354,288	+1,715	354,288	1,715
Inventory and Monitoring.....	121,572	857	116,546	857	+\$15,454	-93	132,000	764
Recreation, Heritage, & Wilderness.....	179,639	1,862	177,283	1,862	+\$75,597	-63	252,880	1,799
Wildlife & Fisheries Habitat Management.....	81,650	749	76,897	749	+\$48,103	-82	125,000	667
Grazing Management.....	39,558	428	41,808	428	+\$8,792	-47	50,600	381
Forest Products.....	229,713	2,485	196,648	2,485	+\$162,473	-5	359,121	2,480
Vegetation & Watershed Management.....	103,407	829	100,333	829	+\$74,067	-46	174,400	783
Minerals & Geology Management.....	56,447	461	65,396	461	+\$2,604	-51	68,000	410
Landownership Management.....	64,733	526	59,929	526	+\$9,071	-59	69,000	467
Law Enforcement Operations.....	106,776	691	109,186	691	+\$19,967	-	129,153	691
Valles Caldera.....	-1	-	-	-	-	-	0	-
Nation Forest Systems - Other.....	409,732	-	399,967	-	-\$399,967	-	-	-
<b>Total Obligations.....</b>	<b>\$1,623,893</b>	<b>10,830</b>	<b>\$1,567,061</b>	<b>10,830</b>	<b>\$180,381</b>	<b>814</b>	<b>\$1,747,442</b>	<b>11,644</b>
Bal. Available, EOY.....	22,896		1,074		-	-	1,074	
<b>Total Available.....</b>	<b>1,646,790</b>	<b>10,830</b>	<b>1,568,135</b>	<b>10,830</b>	<b>180,381</b>	<b>814</b>	<b>1,748,516</b>	<b>11,644</b>
Transfers In.....	-70,543		-38,743		+38,743	-	-	-
	1,016		-		-	-	-	-
Bal. Available, SOY.....	-38,785	-	-22,896	-	+21,822	-	-1,074	-
Recoveries, Other (Net).....	-29,114	-	-	-	-	-	-	-
<b>Total Appropriation.....</b>	<b>\$1,509,364</b>	<b>10,830</b>	<b>\$1,506,496</b>	<b>10,830</b>	<b>+\$240,946</b>	<b>+814</b>	<b>\$1,747,442</b>	<b>11,644</b>

Notes:

Other includes cost pool spending and prior year activity in obsolete programs

Excludes reimbursable funds

Bal. Available, SOY and Recoveries expressed as negative values for calculation purposes only

FOREST SERVICE

Capital Improvement and Maintenance  
Project Statement  
 Adjusted Appropriations Detail and Staff Years (SYs)  
 (Dollars in thousands)

Program	2016 Actual		2017 Annualized CR		Inc. or Dec.		FY 2018 Estimate	
	Amount	SYs	Amount	SYs	Amount	SYs	Amount	SYs
Discretionary Appropriations:								
Facilities.....	\$62,273	307	\$54,837	307	-\$46,557	-51	\$8,280	256
Roads.....	137,950	977	132,476	977	-74,754	-103	57,722	874
Trails.....	55,244	583	52,920	583	-44,778	-51	8,142	532
Deferred Maintenance & Infrastructure Improvement.....	3,142	1	3,144	1	-3,144	-1	-	-
Legacy Roads and Trails.....	22,168	77	22,115	77	-22,115	-77	-	-
Capital Improvement and Maintenance - Other.....	85,990		83,237		-57,688	-	25,549	-
Total Adjusted Approp.....	366,767	1,945	348,729	1,945	-249,036	-283	99,693	1,662
Rescissions, Transfers, and Seq. (Net).....								
	-2,603	-	14,743	-	-14,743	-	-	-
Total Appropriation.....	364,164	1,945	363,472	1,945	-263,779	-283	99,693	1,662
Transfers In:								
Fire Transfer Repayment.....	17,600		-		-	-	-	-
Total.....	17,600		-		-	-	-	-
Transfers Out:								
IRR - Legacy Roads and Trails.....	-14,743		-14,743		+\$14,743	-		
National Telecommunications and Information Administration	-254				-	-		
Total.....	-14,997		-14,743		14,743	-	-	
Bal. Available, SOY.....	13,547		11,912		-\$10,832	-	1,080	
Recoveries, Other (Net).....	7,060				-	-		
Total Available.....	387,374	1,945	360,641	1,945	-259,868	-283	100,773	1,662
Bal. Available, EOY.....	-11,912		-1,080		-	-	-1,080	
Total Obligations.....	\$375,462	1,945	\$359,561	1,945	-\$259,868	-283	\$99,693	1,662

Notes:

- Other includes cost pool authority
- Excludes reimbursable funds
- Bal. Available EOY is expressed as a negative value for calculation purposes only



FOREST SERVICE

Capital Improvement and Maintenance  
Project Statement  
 Obligations Detail and Staff Years (SYs)  
 (Dollars in thousands)

Program	2016 Actual		2017 Annualized CR		Inc. or Dec.		FY 2018 Estimate	
	Amount	SYs	Amount	SYs	Amount	SYs	Amount	SYs
Discretionary Obligations:								
Facilities.....	\$59,979	307	\$63,603	307	-\$55,323	-51	\$8,280	256
Roads.....	144,907	977	132,476	977	-\$74,754	-103	57,722	874
Trails.....	56,860	583	54,025	583	-\$45,883	-51	8,142	532
Deferred Maintenance & Infrastructure Improvement.....	3,137	1	3,176	1	-\$3,176	-1	-	-
Legacy Roads and Trails.....	24,157	77	24,689	77	-\$24,689	-77	-	-
Capital Improvement and Maintenance - Other.....	86,422	-	81,592	-	-\$56,043	-	25,549	-
Total Obligations.....	\$375,462	1,945	\$359,561	1,945	-\$259,868	-283	\$99,693	1,662
Bal. Available, EOY.....	11,912		1,080		-	-	1,080	
Total Available.....	387,373	1,945	360,641	1,945	-259,868	-283	100,773	1,662
Transfers In.....	-17,600		-		-	-	-	-
Transfers Out.....	14,997		14,743		-14,743	-	-	-
Bal. Available, SOY.....	-13,547	-	-11,912	-	+10,832	-	-1,080	-
Recoveries, Other (Net).....	-7,060	-	-	-	-	-	-	-
Total Appropriation.....	\$364,164	1,945	\$363,472	1,945	-\$263,779	-283	\$99,693	1,662

Notes:

- Other includes cost pool spending and prior year activity in obsolete programs
- Excludes reimbursable funds
- Bal. Available, SOY and Recoveries expressed as negative values for calculation purposes only

FOREST SERVICE

Wildland Fire Management  
 Project Statement  
 Adjusted Appropriations Detail and Staff Years (SYs)  
 (Dollars in thousands)

Program	2016 Actual		2017 Annualized CR		Inc. or Dec.		FY 2018 Estimate	
	Amount	SYs	Amount	SYs	Amount	SYs	Amount	SYs
<b>Discretionary Appropriations:</b>								
Preparedness.....	\$813,510	7,170	\$1,080,563	7,170	+\$259,057	-140	\$1,339,620	7,030
Suppression.....	1,602,577	3,100	1,588,459	3,100	-531,641	-60	1,056,818	3,040
Hazardous Fuels.....	299,884	1,815	350,288	1,815	-350,288	-1,815	-	-
State Fire Assistance.....	81,308	56	77,852	56	-8,452	-12	69,400	44
Volunteer Fire Assistance.....	13,032	-	12,975	-	-1,375	-	11,600	-
Wildland Fire Management - Other.....	418,408	-	-	-	-	-	-	-
<b>Total Adjusted Approp.....</b>	<b>3,228,719</b>	<b>12,141</b>	<b>3,110,137</b>	<b>12,141</b>	<b>-632,699</b>	<b>-2,027</b>	<b>2,477,438</b>	<b>10,114</b>
<b>Rescissions, Transfers, and Seq. (Net).....</b>								
	-142,390	107	-728,342	107	745,942	-14	17,600	93
<b>Total Appropriation.....</b>	<b>3,086,329</b>	<b>12,248</b>	<b>2,381,795</b>	<b>12,248</b>	<b>113,243</b>	<b>-2,041</b>	<b>2,495,038</b>	<b>10,207</b>
<b>Transfers In:</b>								
FLAME.....	675,165		779,000		-\$779,000	-		
Department of Interior.....	122		-		-	-		
<b>Total.....</b>	<b>675,287</b>		<b>779,000</b>		<b>-779,000</b>	<b>-</b>	<b>-</b>	<b>-</b>
<b>Transfers Out:</b>								
National Forest System - IRR.....	-24,000		-24,000		+\$24,000	-		
Fire Transfer.....	-479,039		-		-	-		
National Fire Plan.....	-19,795	-99	-19,757	-99	+\$2,157	+6	-17,600	-93
Joint Fire Science.....	-6,914	-8	-6,901	-8	+\$6,901	+8	-	-
Department of Interior.....	-3,148		-		-	-		
<b>Total.....</b>	<b>-532,897</b>	<b>-107</b>	<b>-50,658</b>	<b>-107</b>	<b>33,058</b>	<b>14</b>	<b>-17,600</b>	<b>-93</b>
Bal. Available, SOY.....	120,570		118,775		-\$52,001	-	66,774	
Recoveries, Other (Net).....	238,563				-	-		
<b>Total Available.....</b>	<b>3,587,852</b>	<b>12,141</b>	<b>3,228,912</b>	<b>12,141</b>	<b>-684,700</b>	<b>-2,027</b>	<b>2,544,212</b>	<b>10,114</b>
Bal. Available, EOY.....	-118,775		-66,774		-	-	-66,774	
<b>Total Obligations.....</b>	<b>\$3,469,076</b>	<b>12,141</b>	<b>\$3,162,138</b>	<b>12,141</b>	<b>-\$684,700</b>	<b>-2,027</b>	<b>\$2,477,438</b>	<b>10,114</b>

Notes:

FY16 Suppression adjusted appropriation includes net transfers for Fire Transfer Repayment (\$700 million) and FLAME transfer (\$675 million)  
 Other includes FY 2016 cost pool authority; FY 2017 and forward cost pools remain in programs in Wildland Fire Management  
 FY 2017 Ending Balance includes \$65 million for air tanker  
 Excludes reimbursable funds

FOREST SERVICE

Wildland Fire Management  
Project Statement  
 Obligations Detail and Staff Years (SYs)  
 (Dollars in thousands)

Program	2016 Actual		2017 Annualized CR		Inc. or Dec.		FY 2018 Estimate	
	Amount	SYs	Amount	SYs	Amount	SYs	Amount	SYs
<b>Discretionary Obligations:</b>								
Preparedness.....	\$842,046	7,170	\$1,080,563	7,170	+\$259,057	-140	\$1,339,620	7,030
Suppression.....	1,875,606	3,100	1,631,000	3,100	-\$574,182	-60	\$1,056,818	3,040
Hazardous Fuels.....	322,534	1,815	352,341	1,815	-\$352,341	-1,815	\$ -	-
State Fire Assistance.....	77,987	56	85,235	56	-\$15,835	-12	\$69,400	44
Volunteer Fire Assistance.....	13,007	-	12,999	-	-\$1,399	-	\$11,600	-
Wildland Fire Management - Other.....	337,896	-	-	-	-	-	\$ -	-
<b>Total Obligations.....</b>	<b>\$3,469,077</b>	<b>12,141</b>	<b>\$3,162,138</b>	<b>12,141</b>	<b>-\$684,700</b>	<b>-2,027</b>	<b>\$2,477,438</b>	<b>10,114</b>
Bal. Available, EOY.....	118,775		66,774		-	-	66,774	
<b>Total Available.....</b>	<b>3,587,852</b>	<b>12,141</b>	<b>3,228,912</b>	<b>12,141</b>	<b>-684,700</b>	<b>-2,027</b>	<b>2,544,212</b>	<b>10,114</b>
Transfers In.....	-675,287	-	-779,000		+779,000	-	-	-
Transfers Out.....	532,897	107	50,658		-33,058	-	17,600	-
Bal. Available, SOY.....	-120,570	-	-118,775	-	+52,001	-	-66,774	-
Recoveries, Other (Net).....	-238,563	-	-	-	-	-	-	-
<b>Total Appropriation.....</b>	<b>\$3,086,329</b>	<b>12,248</b>	<b>\$2,381,795</b>	<b>12,141</b>	<b>+\$113,243</b>	<b>-2,027</b>	<b>\$2,495,038</b>	<b>10,114</b>

Notes:

FY16 Suppression adjusted appropriation includes Fire Transfer Repayment (\$700 million) and FLAME transfer (\$675 million). To balance total WFM appropriation to FY16 Enacted add FLAME (\$823m) and subtract Fire Transfer Repayment (\$700 million)

Other includes FY 2016 cost pool spending; FY 2017 and forward cost pools remain in programs in Wildland Fire Management

FY 2017 Ending Balance includes \$65 million for air tanker

FY16 Suppression spending includes expenditure transfer from Cooperative Work - Knutson-Vandenberg

Excludes reimbursable funds

FOREST SERVICE

Other Appropriations  
 Project Statement  
 Adjusted Appropriations Detail and Staff Years (SYs)  
 (Dollars in thousands)

Program	2016 Actual		2017 Annualized CR		Inc. or Dec.		FY 2018 Estimate	
	Amount	SYs	Amount	SYs	Amount	SYs	Amount	SYs
Discretionary Appropriations:								
Range Betterment Fund.....	\$3,273	6	\$2,316	6	-\$251	-1	\$2,065	5
Gifts, Donations, & Bequest for Forest & Rangeland Research.....	-	-	45	-	-	-	45	-
Management of National Forest Lands for Subsistence Uses.....	2,500	12	2,495	12	-270	-1	2,225	11
Total Adjusted Approp.....	5,773	18	4,856	18	-521	-2	4,335	16
Rescissions, Transfers, and Seq. (Net).....								
	-		-		-	-	-	
Total Appropriation.....	5,773	18	4,856	18	-521	-2	4,335	16
Transfers In:								
Total.....	-		-		-	-	-	
Transfers Out:								
Total.....	-		-		-	-	-	
Bal. Available, SOY.....	1,123		1,469		-\$1,469	-	0	
Recoveries, Other (Net).....	117				-	-		
Total Available.....	7,013	18	6,325	18	-1,990	-2	4,335	16
Bal. Available, EOY.....	-1,469		-0		-	-	-0	
Total Obligations.....	\$5,544	18	\$6,325	18	-\$1,990	-2	\$4,335	16

FOREST SERVICE

Other Appropriations  
Project Statement  
 Obligations Detail and Staff Years (SYs)  
 (Dollars in thousands)

Program	2016 Actual		2017 Annualized CR		Inc. or Dec.		FY 2018 Estimate	
	Amount	SYs	Amount	SYs	Amount	SYs	Amount	SYs
Discretionary Obligations:								
Range Betterment Fund.....	\$3,029	6	\$3,482	6	-\$1,417	-1	\$2,065	5
Gifts, Donations, & Bequest for Forest & Rangeland Research.....	-	-	160	-	-\$115	-	45	-
Management of National Forest Lands for Subsistence Uses.....	2,515	12	2,683	12	-\$458	-1	2,225	11
Total Obligations.....	\$5,544	18	\$6,325	18	-\$1,990	-2	\$4,335	16
Bal. Available, EOY.....	1,469	-	-	-	-	-	-	-
Total Available.....	7,013	18	6,325	18	-1,990	-2	4,335	16
Transfers In.....	-	-	-	-	-	-	-	-
Transfers Out.....	-	-	-	-	-	-	-	-
Bal. Available, SOY.....	-1,123	-	-1,469	-	+1,469	-	-0	-
Recoveries, Other (Net).....	-117	-	-	-	-	-	-	-
Total Appropriation.....	\$5,773	18	\$4,856	18	-\$521	-2	\$4,335	16

FOREST SERVICE

Land Acquisition  
Project Statement  
 Adjusted Appropriations Detail and Staff Years (SYs)  
 (Dollars in thousands)

Program	2016 Actual		2017 Annualized CR		Inc. or Dec.		FY 2018 Estimate	
	Amount	SYs	Amount	SYs	Amount	SYs	Amount	SYs
Discretionary Appropriations:								
Land Acquisition.....	\$79,616	52	\$63,314	52	-\$56,314	-	\$7,000	52
Acquisition of Land for National Forests Special Acts.....	950	-	948	-	-98	-	850	-
Acquisition of Lands to Complete Land Exchanges.....	-	-	216	-	-24	-	192	-
Total Adjusted Approp.....	80,566	52	64,478	52	-56,436	-	8,042	52
Rescissions, Transfers, and Seq. (Net).....								
	-16,181		-		-	-	-	
Total Appropriation.....	64,385	52	64,478	52	-56,436	-	8,042	52
Transfers In:								
Fire Transfer Repayment.....	16,181		-		-	-	-	
Total.....	16,181		-		-	-	-	
Transfers Out:								
Total.....	-		-		-	-	-	
Bal. Available, SOY.....	4,058		33,924		-\$373	-	33,551	
Recoveries, Other (Net).....	910				-	-		
Total Available.....	85,535	52	98,402	52	-56,809	-	41,593	52
Lapsing Balances								
	-26		-373				-290	
Bal. Available, EOY.....	-33,924		-33,551		+290	-	-33,261	
Total Obligations.....	\$51,585	52	\$64,478	52	-\$56,436	-	\$8,042	52

FOREST SERVICE

Land Acquisition  
Project Statement  
 Obligations Detail and Staff Years (SYs)  
 (Dollars in thousands)

Program	2016 Actual		2017 Annualized CR		Inc. or Dec.		FY 2018 Estimate	
	Amount	SYs	Amount	SYs	Amount	SYs	Amount	SYs
Discretionary Obligations:								
Land Acquisition.....	\$51,263	52	\$63,314	52	-\$56,314	-	\$7,000	52
Acquisition of Land for National Forests Special Acts.....	317	-	948	-	-\$98	-	850	-
Acquisition of Lands to Complete Land Exchanges.....	5	-	216	-	-\$24	-	192	-
Total Obligations.....	\$51,585	52	\$64,478	52	-\$56,436	0	\$8,042	52
Lapsing Balances.....	26		373				290	
Bal. Available, EOY.....	33,924		33,551		-290	-	33,261	
Total Available.....	85,535	52	98,402	52	-56,726	-	41,593	52
Transfers In.....	-16,181		-		-	-	-	-
Transfers Out.....	-		-		-	-	-	-
Bal. Available, SOY.....	-4,058	-	-33,924	-	+373	-	-33,551	-
Recoveries, Other (Net).....	-910	-	-	-	-	-	-	-
Total Appropriation.....	\$64,385	52	\$64,478	52	-\$56,436	-	\$8,042	52

FOREST SERVICE

Permanent Funds  
 Project Statement  
 Adjusted Appropriations Detail and Staff Years (SYs)  
 (Dollars in thousands)

Program	2016 Actual		2017 Annualized CR		Inc. or Dec.		FY 2018 Estimate	
	Amount	SYs	Amount	SYs	Amount	SYs	Amount	SYs
<b>Mandatory Appropriations:</b>								
Brush Disposal .....	45,378	67	7,971	67	+29	-	8,000	67
Hardwood Technology Transfer & Applied Research.....	-	-	-	-	-	-	-	-
Timber Salvage Sales.....	99,263	218	26,648	218	+2,352	-	29,000	218
Timber Sales Pipeline Restoration.....	20,695	32	5,936	32	+64	-	6,000	32
Forest Botanical Products.....	3,118	18	1,038	18	-38	-	1,000	18
Stewardship Contracting.....	21,675	-	14,105	-	-105	-	14,000	-
Recreation Fees, Forest Service.....	114,622	566	69,919	566	-124	-	69,795	566
Timber Purchaser Election Road Construction.....	23,000	-	2,000	-	-	-	2,000	-
Operation & Maintenance of Forest Service Quarters.....	15,225	29	9,000	29	+1,000	-	10,000	29
Roads and Trails for States.....	-	-	17,000	-	-	-	17,000	-
Land Between the Lakes Management.....	4,655	11	5,000	11	-	-	5,000	11
Midwin National Tallgrass Prairie Rental Fees.....	3,755	-	1,000	-	-	-	1,000	-
Midwin National Tallgrass Prairie Restoration.....	-	-	-	-	-	-	-	-
Quinalt Special Management Area.....	-	-	-	-	-	-	-	-
Restoration of Forest Lands and Improvements.....	173,600	154	19,341	154	-8,341	-	11,000	154
Commercial Filming & Still Photography Land Use Fee Retention	1,978	6	666	6	+5	-	671	6
Organizational Camps Program.....	1,831	6	686	6	-4	-	682	6
Cost Recovery (Land Uses).....	8,936	41	766	41	+1	-	767	41
Licensee Program Smokey Bear.....	99	-	98	-	-	-	98	-
Licensee Program Woodsy Owl.....	7	-	7	-	-	-	7	-
Forest Service Go Green Program (Conservation).....	34	-	33	-	-	-	33	-
Conveyance of Administrative Sites.....	25,752	3	8,597	3	-7,597	-	1,000	3
Site-Specific Lands Act.....	3,269	1	951	1	+49	-	1,000	1
Payments to States Funds.....	359,590	42	77,627	42	-477	-	77,150	42
Valles Caldera.....	-302	-	-	-	-	-	-	-
<b>Subtotal.....</b>	<b>926,178</b>	<b>1,194</b>	<b>268,390</b>	<b>1,194</b>	<b>-13,187</b>	<b>-</b>	<b>255,203</b>	<b>1,194</b>
<b>Total Adjusted Appropriation</b>	<b>926,178</b>	<b>1,194</b>	<b>268,390</b>	<b>1,194</b>	<b>-13,187</b>	<b>0</b>	<b>255,203</b>	<b>1,194</b>
<b>Rescissions, Transfers, and Seq. (Net).....</b>	<b>-359,091</b>		<b>-2,187</b>		<b>-</b>	<b>-</b>	<b>-</b>	
<b>Total Appropriation.....</b>	<b>567,087</b>	<b>1,194</b>	<b>266,203</b>	<b>1,194</b>	<b>-13,187</b>	<b>-</b>	<b>255,203</b>	<b>1,194</b>
<b>Transfers In:</b>								
Fire Transfer Repayment.....	361,700		-		-	-	-	
NRDA from DOI.....	1,666		-		-	-	-	
PASS distribution (National Park Service).....	430		-		-	-	-	
<b>Total.....</b>	<b>363,796</b>		<b>-</b>		<b>-</b>	<b>-</b>	<b>-</b>	
<b>Transfers Out:</b>								
Bureau of Land Management .....	-56		-		-	-	-	
Valles Caldera.....	-302		-		-	-	-	
<b>Total.....</b>	<b>-359</b>		<b>-</b>		<b>-</b>	<b>-</b>	<b>-</b>	
Sequestration.....	-4,347		2,187					
Bal. Available, SOY.....	366,122		778,959		-79,862	-	699,097	
Recoveries, Other (Net).....	4,559		-		-	-	-	
<b>Total Available.....</b>	<b>1,296,859</b>	<b>1,194</b>	<b>1,047,349</b>	<b>1,194</b>	<b>-93,049</b>	<b>-</b>	<b>954,300</b>	<b>1,194</b>
Bal. Available, EOY.....	-778,959		-699,097		+70,049	-	-629,048	
<b>Total Obligations.....</b>	<b>\$517,900</b>	<b>1,194</b>	<b>\$348,252</b>	<b>1,194</b>	<b>-\$23,000</b>	<b>-</b>	<b>\$325,252</b>	<b>1,194</b>



FOREST SERVICE

Permanent Funds  
 Project Statement  
 Obligations Detail and Staff Years (SYs)  
 (Dollars in thousands)

Program	2016 Actual		2017 Annualized CR		Inc. or Dec.		FY 2018 Estimate	
	Amount	SYs	Amount	SYs	Amount	SYs	Amount	SYs
<b>Mandatory Obligations:</b>								
Brush Disposal .....	\$11,801	67	20,000	67	-\$4,000	-	16,000	67
Hardwood Technology Transfer & Applied Research.....	0	-	-	-	-	-	-	-
Timber Salvage Sales.....	26,994	218	45,000	218	-\$15,000	-	30,000	218
Timber Sales Pipeline Restoration.....	6,115	32	14,000	32	-\$4,000	-	10,000	32
FY16 Suppression spending includes expenditure transfer from Cooperative Work - Knutson-Vandenberg								
Stewardship Contracting.....	1,602	18	1,602	18	-	-	1,602	18
Recreation Fees, Forest Service.....	12,511	-	13,000	-	-	-	13,000	-
Timber Purchaser Election Road Construction.....	70,408	566	70,408	566	-	-	70,408	566
Operation & Maintenance of Forest Service Quarters.....	532	-	532	-	-	-	532	-
Roads and Trails for States.....	5,127	29	5,127	29	-	-	5,127	29
Land Between the Lakes Management.....	0	-	-	-	-	-	-	-
Midewin National Tallgrass Prairie Rental Fees.....	4,254	11	4,254	11	-	-	4,254	11
Midewin National Tallgrass Prairie Restoration.....	760	-	760	-	-	-	760	-
Quinault Special Management Area.....	0	-	-	-	-	-	-	-
Restoration of Forest Lands and Improvements.....	2	-	2	-	-	-	2	-
Commercial Filming & Still Photography Land Use Fee Retention	67,275	154	67,275	154	-	-	67,275	154
Organizational Camps Program.....	517	6	517	6	-	-	517	6
Cost Recovery (Land Uses).....	1,000	6	1,000	6	-	-	1,000	6
Licensee Program Smokey Bear.....	5,122	41	5,122	41	-	-	5,122	41
Licensee Program Woodsy Owl.....	61	-	61	-	-	-	61	-
Forest Service Go Green Program (Conservation).....	0	-	-	-	-	-	-	-
Conveyance of Administrative Sites.....	19	-	19	-	-	-	19	-
Site-Specific Lands Act.....	11,308	3	7,500	3	-	-	7,500	3
Payments to States Funds.....	376	1	500	1	-	-	500	1
Valles Caldera.....	292,104	42	91,573	42	-	-	91,573	42
Subtotal.....	11	-	-	-	-	-	-	-
	\$517,900	1,194	\$348,252	1,194	-\$23,000	0	\$325,252	1,194
<b>Total Obligations</b>	<b>517,900</b>	<b>1,194</b>	<b>348,252</b>	<b>1,194</b>	<b>-23,000</b>	<b>0</b>	<b>325,252</b>	<b>1,194</b>
Bal. Available, EOY.....	778,959		699,097		-70,049	-	629,048	
<b>Total Available</b> .....	<b>1,296,859</b>	<b>1,194</b>	<b>1,047,349</b>	<b>1,194</b>	<b>-93,049</b>	<b>-</b>	<b>954,300</b>	<b>1,194</b>
Transfers In.....	-363,796		-		-	-	-	
Transfers Out.....	359		-		-	-	-	
Sequestration.....	4,347		-2,187					
Bal. Available, SOY.....	-366,122	-	-778,959	-	+79,862	-	-699,097	-
Recoveries, Other (Net).....	-4,559	-	-	-	-	-	-	-
<b>Total Appropriation</b> .....	<b>\$567,087</b>	<b>1,194</b>	<b>\$266,203</b>	<b>1,194</b>	<b>-\$11,000</b>	<b>-</b>	<b>\$255,203</b>	<b>1,194</b>

FOREST SERVICE

Trust Funds  
Project Statement  
 Adjusted Appropriations Detail and Staff Years (SYs)  
 (Dollars in thousands)

Program	2016 Actual		2017 Annualized CR		Inc. or Dec.		FY 2018 Estimate	
	Amount	SYs	Amount	SYs	Amount	SYs	Amount	SYs
Mandatory Appropriations:								
Cooperative Work - Knutson-Vandenberg.....	\$210,522	367	\$40,447	367	-\$447	-	\$40,000	367
Cooperative Work - Other.....	84,187	216	29,045	216	+955	-	30,000	216
Reforestation Trust Fund.....	30,000	158	30,000	158	-	-	30,000	158
Land Between the Lakes Trust Fund.....	92	-	90	-	-	-	90	-
Total Adjusted Approp.....	324,801	741	99,582	741	508	-	100,090	741
Rescissions, Transfers, and Seq. (Net).....								
	-400		-492		-	-	-	
Total Appropriation.....	324,401	741	99,090	741	508	-	100,090	741
Transfers In:								
Total.....	-		-		-	-	-	-
Transfers Out:								
Total.....	-		-		-	-	-	-
Sequestration.....	400		492					
Bal. Available, SOY.....	147,261		341,582		-\$51,499	-	290,083	
Recoveries, Other (Net).....	3,268		-		-	-	-	
Total Available.....	475,331	741	441,164	741	-50,991	-	390,173	741
Bal. Available, EOY.....	-341,582		-290,083		+41,991	-	-248,092	
Total Obligations.....	\$133,749	741	\$151,081	741	-\$9,000	-	\$142,081	741

FOREST SERVICE

Trust Funds  
Project Statement  
 Obligations Detail and Staff Years (SYs)  
 (Dollars in thousands)

Program	2016 Actual		2017 Annualized CR		Inc. or Dec.		FY 2018 Estimate	
	Amount	SYs	Amount	SYs	Amount	SYs	Amount	SYs
Mandatory Obligations:								
Cooperative Work - Knutson-Vandenberg.....	\$58,154	367	75,000	367	-\$4,000	-	71,000	367
Cooperative Work - Other.....	43,744	216	44,000	216	-	-	44,000	216
Reforestation Trust Fund.....	31,769	158	32,000	158	-\$5,000	-	27,000	158
Land Between the Lakes Trust Fund.....	82	-	81	-	-	-	81	-
Total Obligations.....	\$133,749	741	\$151,081	741	-\$9,000	0	\$142,081	741
Bal. Available, EOY.....	341,582		290,083		-41,991	-	248,092	
Total Available.....	475,331	741	441,164	741	-50,991	-	390,173	741
Transfers In.....	-		-		-	-	-	-
Transfers Out.....	-		-		-	-	-	-
Sequestration.....	-400	-	-492	-	-	-	-	-
Bal. Available, SOY.....	-147,261	-	-341,582	-	+51,499	-	-290,083	-
Recoveries, Other (Net).....	-3,268	-	-	-	-	-	-	-
Total Appropriation.....	324,401	741	99,090	741	+1,000	-	100,090	741

Classification by Objects

(Dollars in Thousands)

**Forest Service Totals**

**Agency Totals (excludes reimbursables, permanent appropriations, trust and revolving funds)**

	2016	2017	2018
	Enacted	Annualized CR	President's Budget
11.0 Total personnel compensation.....	2,022,263	1,815,701	1,827,147
12.0 Personnel benefits.....	721,218	586,440	591,179
13.0 Benefits for former personnel.....	45,203	48,094	47,847
Total, personnel comp. and benefits.....	2,788,684	2,450,235	2,466,173
Other Objects:			
21.0 Travel and transportation of persons.....	155,907	102,050	102,486
22.0 Transportation of things.....	26,990	18,748	18,785
23.1 Rent payments to GSA.....	37,927	37,049	36,142
23.2 Rental payments to others.....	61,951	40,305	40,232
23.3 Communications, utilities, and misc. charges.....	94,944	75,447	74,813
24.0 Printing and reproduction.....	5,490	4,989	4,885
25.1 Advisory and assistance services.....	8,163	376	251
25.2 Other Services.....	1,313,817	1,060,148	1,057,044
25.3 Purchases of goods and services.....	434,287	412,079	407,539
25.4 Operation and maintenance of facilities.....	9,946	6,053	3,069
25.5 Research and development contracts.....	43,000	29,212	25,416
25.6 Medical care.....	343	362	371
25.7 Operation and maintenance of equipment.....	13,982	8,988	8,456
25.8 Subsistence and support of persons.....	0	0	0
26.0 Supplies and materials.....	176,452	133,250	134,367
31.0 Equipment.....	55,924	48,639	49,086
32.0 Land and Structures.....	32,403	57,543	9,126
41.0 Grants.....	838,678	362,645	293,320
Total , Other Objects.....	3,311,204	2,398,882	2,266,387
99.9 Total, new obligations.....	6,099,888	4,849,117	4,732,560

Note: The FY 2016 enacted amount is actual obligations. The FY 2017 and FY 2018 amounts are based on total appropriations.

Classification by Objects  
(Dollars in Thousands)

**Forest and Rangeland Research**

11.0	Total personnel compensation.....	148,123	145,563	129,802
12.0	Personnel benefits.....	50,700	45,232	40,335
13.0	Benefits for former personnel.....	994	1,738	1,550
	Total, personnel comp. and benefits.....	199,817	192,533	171,687
Other Objects:				
21.0	Travel and transportation of persons.....	7,953	6,634	5,916
22.0	Transportation of things.....	1,988	1,735	1,547
23.1	Rent payments to GSA.....	3,976	4,420	3,942
23.2	Rental payments to others.....	3,976	3,281	2,925
23.3	Communications, utilities, and misc. charges.....	6,959	6,153	5,487
24.0	Printing and reproduction.....	994	677	604
25.1	Advisory and assistance services.....	25	30	27
25.2	Other Services.....	20,876	17,950	16,006
25.3	Purchases of goods and services.....	19,882	14,653	13,066
25.4	Operation and maintenance of facilities.....	994	215	192
25.5	Research and development contracts.....	40,759	25,721	22,936
25.6	Medical care.....	4	5	4
25.7	Operation and maintenance of equipment.....	994	1,090	972
25.8	Subsistence and support of persons.....	0	0	0
26.0	Supplies and materials.....	6,959	5,352	4,773
31.0	Equipment.....	5,965	2,855	2,546
32.0	Land and Structures.....	45	46	41
41.0	Grants.....	10,935	7,097	6,328
	Total , Other Objects.....	133,284	97,914	87,313
99.9	Total, new obligations.....	333,101	290,447	259,000

Note: The FY 2016 enacted amount is actual obligations. The FY 2017 and FY 2018 amounts are based on total appropriations.

Classification by Objects  
(Dollars in Thousands)

**State and Private Forestry**

	2016	2017	2018
	Enacted	Annualized CR	President's Budget
11.0 Total personnel compensation.....	43,899	40,152	20,029
12.0 Personnel benefits.....	14,944	12,046	6,009
13.0 Benefits for former personnel.....	248	265	132
Total, personnel comp. and benefits.....	<u>59,091</u>	<u>52,463</u>	<u>26,170</u>
 Other Objects:			
21.0 Travel and transportation of persons.....	3,736	3,273	1,632
22.0 Transportation of things.....	0	437	218
23.1 Rent payments to GSA.....	1,868	1,403	700
23.2 Rental payments to others.....	934	710	354
23.3 Communications, utilities, and misc. charges.....	1,868	1,535	766
24.0 Printing and reproduction.....	0	284	141
25.1 Advisory and assistance services.....	0	75	37
25.2 Other Services.....	16,812	13,760	6,864
25.3 Purchases of goods and services.....	11,208	6,381	3,183
25.4 Operation and maintenance of facilities.....	0	27	13
25.5 Research and development contracts.....	0	2,264	1,129
25.6 Medical care.....	0	1	1
25.7 Operation and maintenance of equipment.....	0	124	62
25.8 Subsistence and support of persons.....	0	0	0
26.0 Supplies and materials.....	1,868	1,724	860
31.0 Equipment.....	1,868	598	298
32.0 Land and Structures.....	0	10	5
41.0 Grants.....	141,973	151,505	75,575
Total , Other Objects.....	<u>182,135</u>	<u>184,110</u>	<u>91,840</u>
 99.9 Total, new obligations.....	 <u>241,226</u>	 <u>236,573</u>	 <u>118,010</u>

Note: The FY 2016 enacted amount is actual obligations. The FY 2017 and FY 2018 amounts are based on total appropriations.

Classification by Object  
(Dollars in Thousands)

**National Forest System**

	2016	2017	2018
	Enacted	Annualized CR	President's Budget
11.0 Total personnel compensation.....	736,226	716,023	830,542
12.0 Personnel benefits.....	282,320	249,396	289,284
13.0 Benefits for former personnel.....	6,983	11,270	13,073
Total, personnel comp. and benefits.....	<u>1,025,529</u>	<u>976,689</u>	<u>1,132,899</u>
 Other Objects:			
21.0 Travel and transportation of persons.....	44,892	28,069	32,559
22.0 Transportation of things.....	9,976	8,419	9,765
23.1 Rent payments to GSA.....	13,966	15,190	17,619
23.2 Rental payments to others.....	20,950	13,024	15,107
23.3 Communications, utilities, and misc. charges.....	32,921	28,760	33,360
24.0 Printing and reproduction.....	2,993	2,611	3,029
25.1 Advisory and assistance services.....	1,995	91	105
25.2 Other Services.....	177,572	170,614	197,901
25.3 Purchases of goods and services.....	162,608	154,410	179,106
25.4 Operation and maintenance of facilities.....	1,995	936	1,086
25.5 Research and development contracts.....	249	654	758
25.6 Medical care.....	100	117	136
25.7 Operation and maintenance of equipment.....	4,988	3,256	3,777
25.8 Subsistence and support of persons.....	0	0	0
26.0 Supplies and materials.....	33,918	31,597	36,651
31.0 Equipment.....	23,942	21,756	25,235
32.0 Land and Structures.....	455	455	528
41.0 Grants.....	64,844	49,847	57,819
Total , Other Objects.....	<u>598,364</u>	<u>529,807</u>	<u>614,543</u>
 99.9 Total, new obligations.....	 <u>1,623,893</u>	 <u>1,506,496</u>	 <u>1,747,442</u>

Note: The FY 2016 enacted amount is actual obligations. The FY 2017 and FY 2018 amounts are based on total appropriations.

Classification by Objects  
(Dollars in Thousands)

**Capital Improvement & Maintenance**

		2016	2017	2018
		Enacted	Annualized CR	President's Budget
11.0	Total personnel compensation.....	126,916	137,621	37,747
12.0	Personnel benefits.....	47,594	46,774	12,829
13.0	Benefits for former personnel.....	2,975	4,369	1,198
	Total, personnel comp. and benefits.....	177,485	188,764	51,774
 Other Objects:				
21.0	Travel and transportation of persons.....	6,941	5,877	1,612
22.0	Transportation of things.....	1,983	1,614	443
23.1	Rent payments to GSA.....	2,975	3,634	997
23.2	Rental payments to others.....	3,966	3,188	874
23.3	Communications, utilities, and misc. charges.....	6,941	7,067	1,938
24.0	Printing and reproduction.....	493	478	131
25.1	Advisory and assistance services.....	143	138	38
25.2	Other Services.....	84,279	79,805	21,889
25.3	Purchases of goods and services.....	51,560	39,425	10,813
25.4	Operation and maintenance of facilities.....	5,949	4,296	1,178
25.5	Research and development contracts.....	992	10	3
25.6	Medical care.....	26	26	7
25.7	Operation and maintenance of equipment.....	1,983	1,390	381
25.8	Subsistence and support of persons.....	0	0	0
26.0	Supplies and materials.....	7,932	8,910	2,444
31.0	Equipment.....	3,966	4,470	1,226
32.0	Land and Structures.....	2,975	4,189	1,149
41.0	Grants.....	14,873	10,191	2,795
	Total , Other Objects.....	197,977	174,708	47,919
99.9	Total, new obligations.....	375,462	363,472	99,693

Note: The FY 2016 enacted amount is actual obligations. The FY 2017 and FY 2018 amounts are based on total appropriations.



Classification by Objects  
(Dollars in Thousands)

**Land Acquisition**

	2016	2017	2018
	Enacted	Annualized CR	President's Budget
11.0 Total personnel compensation.....	3,285	4,235	528
12.0 Personnel benefits.....	821	1,335	166
13.0 Benefits for former personnel.....	1	6	1
Total, personnel comp. and benefits.....	<u>4,107</u>	<u>5,576</u>	<u>695</u>
Other Objects:			
21.0 Travel and transportation of persons.....	134	163	20
22.0 Transportation of things.....	37	45	6
23.1 Rent payments to GSA.....	86	105	13
23.2 Rental payments to others.....	69	84	10
23.3 Communications, utilities, and misc. charges.....	150	182	23
24.0 Printing and reproduction.....	3	3	0
25.1 Advisory and assistance services.....	0	0	0
25.2 Other Services.....	2,464	604	75
25.3 Purchases of goods and services.....	16,427	5,533	690
25.4 Operation and maintenance of facilities.....	5	6	1
25.5 Research and development contracts.....	0	0	0
25.6 Medical care.....	0	0	0
25.7 Operation and maintenance of equipment.....	10	13	2
25.8 Subsistence and support of persons.....	0	0	0
26.0 Supplies and materials.....	77	93	12
31.0 Equipment.....	51	62	8
32.0 Land and Structures.....	27,926	51,963	6,481
41.0 Grants.....	39	47	6
Total , Other Objects.....	<u>47,478</u>	<u>58,902</u>	<u>7,347</u>
99.9 Total, new obligations.....	<u>51,585</u>	<u>64,478</u>	<u>8,042</u>

Note: The FY 2016 enacted amount is actual obligations. The FY 2017 and FY 2018 amounts are based on total appropriations.

Classification by Objects  
(Dollars in Thousands)

**Other Appropriations (Range Betterment, Subsistence, & Research Gifts & Donations)**

	Enacted	Annualized CR	President's Budget
11.0 Total personnel compensation.....	852	2,062	1,841
12.0 Personnel benefits.....	852	745	665
13.0 Benefits for former personnel.....	3	4	4
Total, personnel comp. and benefits.....	<u>1,707</u>	<u>2,810</u>	<u>2,509</u>
Other Objects:			
21.0 Travel and transportation of persons.....	255	299	267
22.0 Transportation of things.....	7	8	7
23.1 Rent payments to GSA.....	57	67	60
23.2 Rental payments to others.....	57	67	60
23.3 Communications, utilities, and misc. charges.....	107	125	112
24.0 Printing and reproduction.....	7	8	7
25.1 Advisory and assistance services.....	0	0	0
25.2 Other Services.....	852	453	405
25.3 Purchases of goods and services.....	609	714	638
25.4 Operation and maintenance of facilities.....	3	4	4
25.5 Research and development contracts.....	0	0	0
25.6 Medical care.....	0	0	0
25.7 Operation and maintenance of equipment.....	7	8	7
25.8 Subsistence and support of persons.....	0	0	0
26.0 Supplies and materials.....	1,703	89	79
31.0 Equipment.....	133	156	139
32.0 Land and Structures.....	2	2	2
41.0 Grants.....	38	45	40
Total , Other Objects.....	<u>3,837</u>	<u>2,046</u>	<u>1,826</u>
99.9 Total, new obligations.....	<u>5,544</u>	<u>4,856</u>	<u>4,335</u>

Note: The FY 2016 enacted amount is actual obligations. The FY 2017 and FY 2018 amounts are based on total appropriations.

Classification by Objects  
(Dollars in Thousands)

**Wildland Fire Management (including FLAME)**

	2016	2017	2018
	Enacted	Annualized CR	President's Budget
11.0 Total personnel compensation.....	962,962	770,047	806,659
12.0 Personnel benefits.....	323,987	230,912	241,890
13.0 Benefits for former personnel.....	33,999	30,442	31,889
Total, personnel comp. and benefits.....	<u>1,320,948</u>	<u>1,031,400</u>	<u>1,080,438</u>
Other Objects:			
21.0 Travel and transportation of persons.....	91,996	57,734	60,479
22.0 Transportation of things.....	12,999	6,491	6,799
23.1 Rent payments to GSA.....	14,999	12,231	12,812
23.2 Rental payments to others.....	31,999	19,952	20,900
23.3 Communications, utilities, and misc. charges.....	45,998	31,623	33,127
24.0 Printing and reproduction.....	1,000	928	972
25.1 Advisory and assistance services.....	6,000	41	43
25.2 Other Services.....	1,010,962	776,963	813,904
25.3 Purchases of goods and services.....	171,993	190,963	200,042
25.4 Operation and maintenance of facilities.....	1,000	569	596
25.5 Research and development contracts.....	1,000	563	590
25.6 Medical care.....	213	212	223
25.7 Operation and maintenance of equipment.....	6,000	3,107	3,255
25.8 Subsistence and support of persons.....	0	0	0
26.0 Supplies and materials.....	123,995	85,484	89,548
31.0 Equipment.....	19,999	18,742	19,633
32.0 Land and Structures.....	1,000	878	920
41.0 Grants.....	605,976	143,914	150,757
42.0 Insurance Claims and Indemnities.....	1,000	1,000	1,000
Total , Other Objects.....	<u>2,148,129</u>	<u>1,351,395</u>	<u>1,415,600</u>
99.9 Total, new obligations.....	<u>3,469,077</u>	<u>2,382,795</u>	<u>2,496,038</u>

Note: The FY 2016 enacted amount is actual obligations. The FY 2017 and FY 2018 amounts are based on total appropriations.

FOREST SERVICE

FOREST SERVICE  
Shared Funding Projects  
(Dollars in thousands)

	<u>2016</u> <u>Enacted</u>	<u>2017</u> <u>Annualized</u> <u>CR</u>	<u>2018</u> <u>President's</u> <u>Budget</u>
<b>Working Capital Fund:</b>			
Administration:			
Beltsville Service Center (Material Management Services).....	\$835	\$877	\$683
Mail and Reproduction Management.....	471	540	467
Integrated Procurement System.....	8,414	8,423	7,882
Subtotal.....	9,720	9,840	9,032
Communications:			
Creative Media & Broadcast Center.....	352	614	616
Finance and Management:			
National Finance Center/USDA.....	9,009	8,869	8,036
National Finance Center/Non-USDA.....	0	0	0
Controller Operations.....	0	0	0
Financial Systems (Financial Management Services).....	56,099	54,238	50,793
Internal Control Support Services.....	321	330	396
Subtotal.....	65,429	63,437	59,225
Information Technology:			
NITC/USDA.....	41,368	21,862	19,637
NITC/Non-USDA.....	0	0	0
International Technology Services (Client Technology Services)....	467	14,283	13,280
Telecommunications Services (Tele. Customer Srvc. Ctr.).....	206	0	0
Subtotal.....	26,952	36,145	31,732
Correspondence Management (Office of the Executive Secretariat)....	755	874	787
Total, Working Capital Fund.....	118,297	110,910	102,577
<b>Department-Wide Reimbursable Programs:</b>			
1890's USDA Initiatives.....	993	1,173	1,056
Advisory Committee Liaison Services (White House Liaison Office)	262	246	222
Continuity of Operations Planning.....	628	661	595
E-GOV Initiatives HSPD-12 (Identity and Access Management).....	2,123	2,105	1,894
E-GOV Initiatives Content Management.....	0	0	0
Emergency Operations Center.....	734	732	658
Facility and Infrastructure Review and Assessment.....	136	141	126
Faith-Based Initiatives and Neighborhood Partnerships.....	120	125	112
Federal Biobased Products Preferred Procurement Program.....	0	0	0
Hispanic-Serving Institutions National Program.....	552	619	557
Honor Awards.....	23	24	22
USDA Human Resources Transformation (inc. Diversity Council)....	482	549	494

FOREST SERVICE

	<u>2016</u> <u>Enacted</u>	<u>2017</u> <u>Annualized</u> <u>CR</u>	<u>2018</u> <u>President's</u> <u>Budget</u>
Intertribal Technical Assistance Network.....	\$964	\$956	\$860
Medical Services.....	44	51	46
Personnel and Document Security (Personnel Security Branch).....	356	313	281
Pre-authorizing Funding.....	1,168	1,158	1,042
Radiation Safety.....	95	86	71
Retirement Processor/Web Application.....	182	187	169
Sign Language Interpreter Services.....	0	0	0
TARGET Center.....	452	452	407
USDA 1994 Program.....	216	243	219
Virtual University.....	622	620	558
Visitor Information Center.....	0	0	0
Total, Department-Wide Reimbursable Programs.....	10,152	10,441	9,389
<b>E-Gov:</b>			
Budget Formulation and Execution Line of Business.....	30	30	30
Disaster Assistance Improvement Plan.....	0	0	0
Enterprise Human Resources Integration.....	616	609	609
E-Rulemaking.....	108	40	50
E-Training.....	848	0	0
Financial Management Line of Business.....	78	100	100
Geospatial Line of Business.....	49	13	13
GovBenefits.gov.....	0	0	0
Grants.gov.....	121	1	1
Grants Management Line of Business.....	20,672	0	0
Human Resources Line of Business.....	86	86	90
Integrated Acquisition Environment - Loans and Grants.....	0	0	0
Integrated Acquisition Environment.....	658	771	786
Recreation One-Stop.....	340	340	340
Total, E-Gov.....	23,606	1,990	2,019
Agency Total.....	\$136,996	\$123,340	\$112,800