

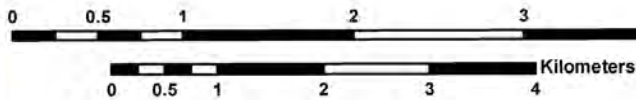
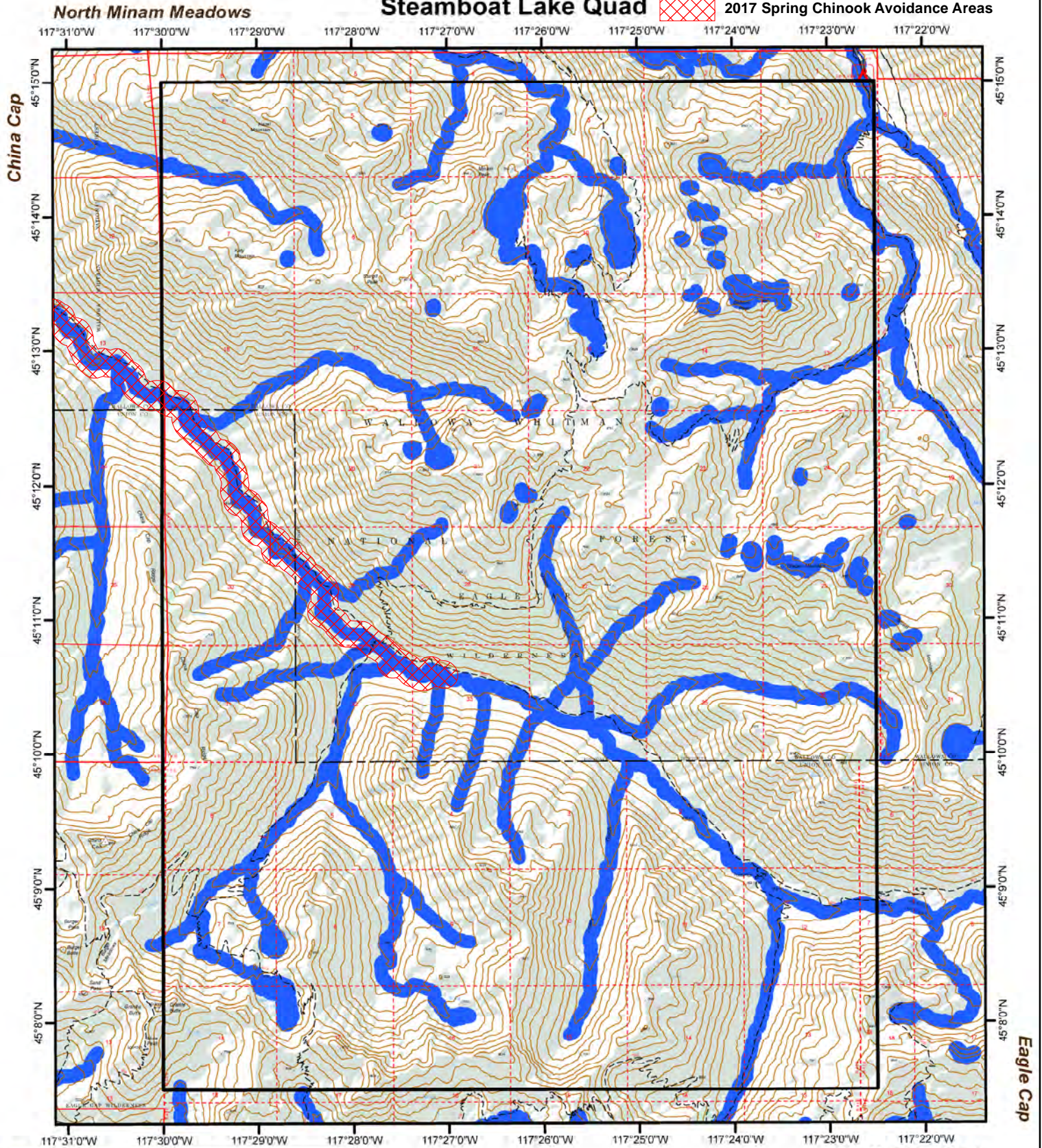
# Decision Support for Aerial Fire Retardant Avoidance

## Wallowa-Whitman National Forest

### Steamboat Lake Quad



2017 Spring Chinook Avoidance Areas



Note. This map is solely intended to depict relevant Threatened, Endangered, Proposed, Candidate, and Sensitive Species, along with streams and water bodies as a planning tool for decisions with regard to aerial fire retardant avoidance.

March 11, 2017