

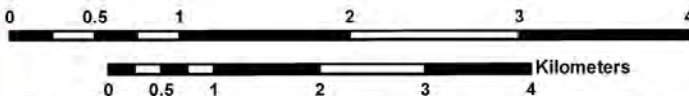
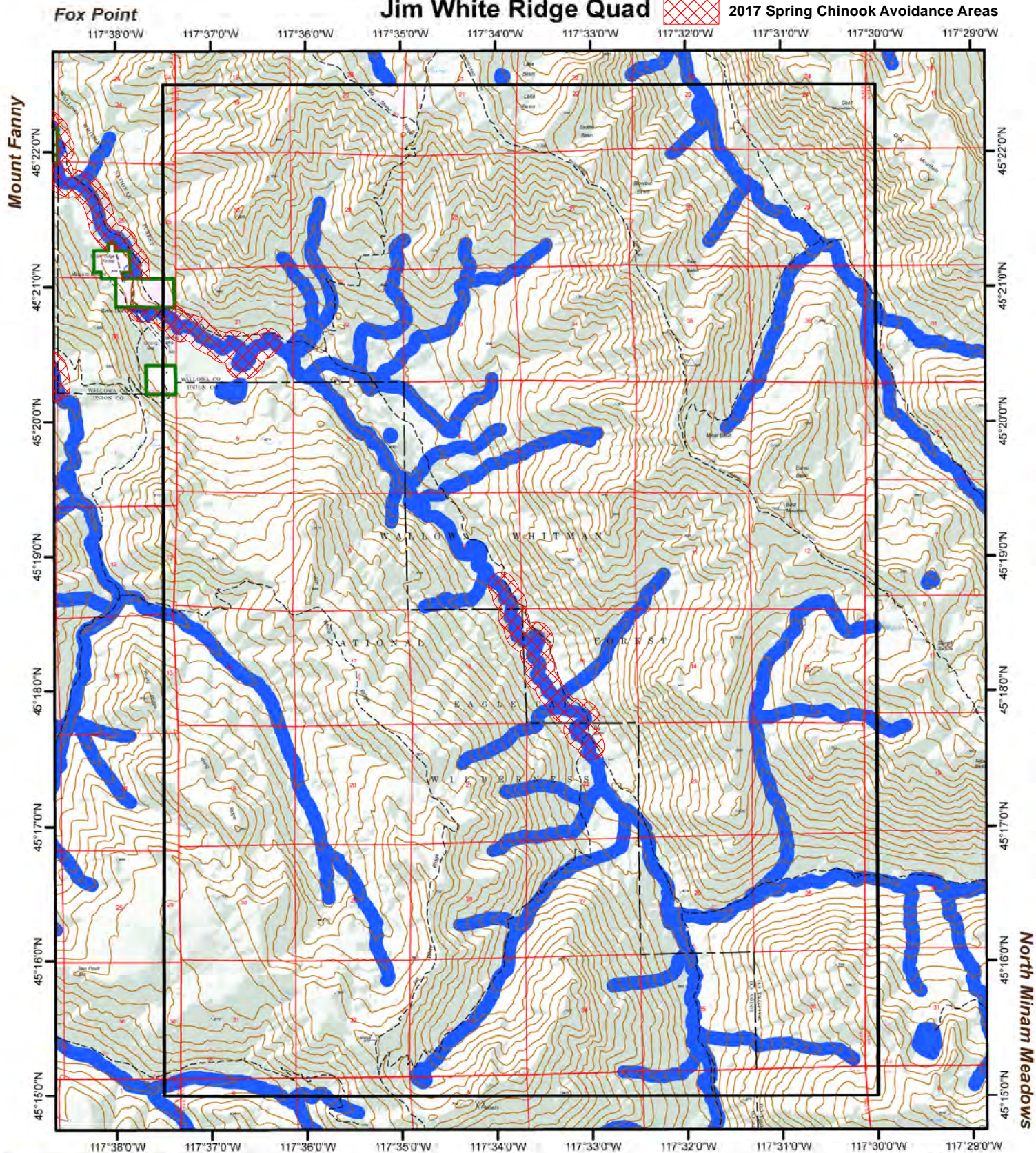
Decision Support for Aerial Fire Retardant Avoidance

Wallowa-Whitman National Forest

Jim White Ridge Quad



2017 Spring Chinook Avoidance Areas



China Cap



Note: This map is solely intended to depict relevant Threatened, Endangered, Proposed, Candidate, and Sensitive Species, along with streams and water bodies as a planning tool for decisions with regard to aerial fire retardant avoidance.

March 11, 2017