

Decision Support for Aerial Fire Retardant Avoidance Okanogan-Wenatchee National Forest

Silver Star Mountain

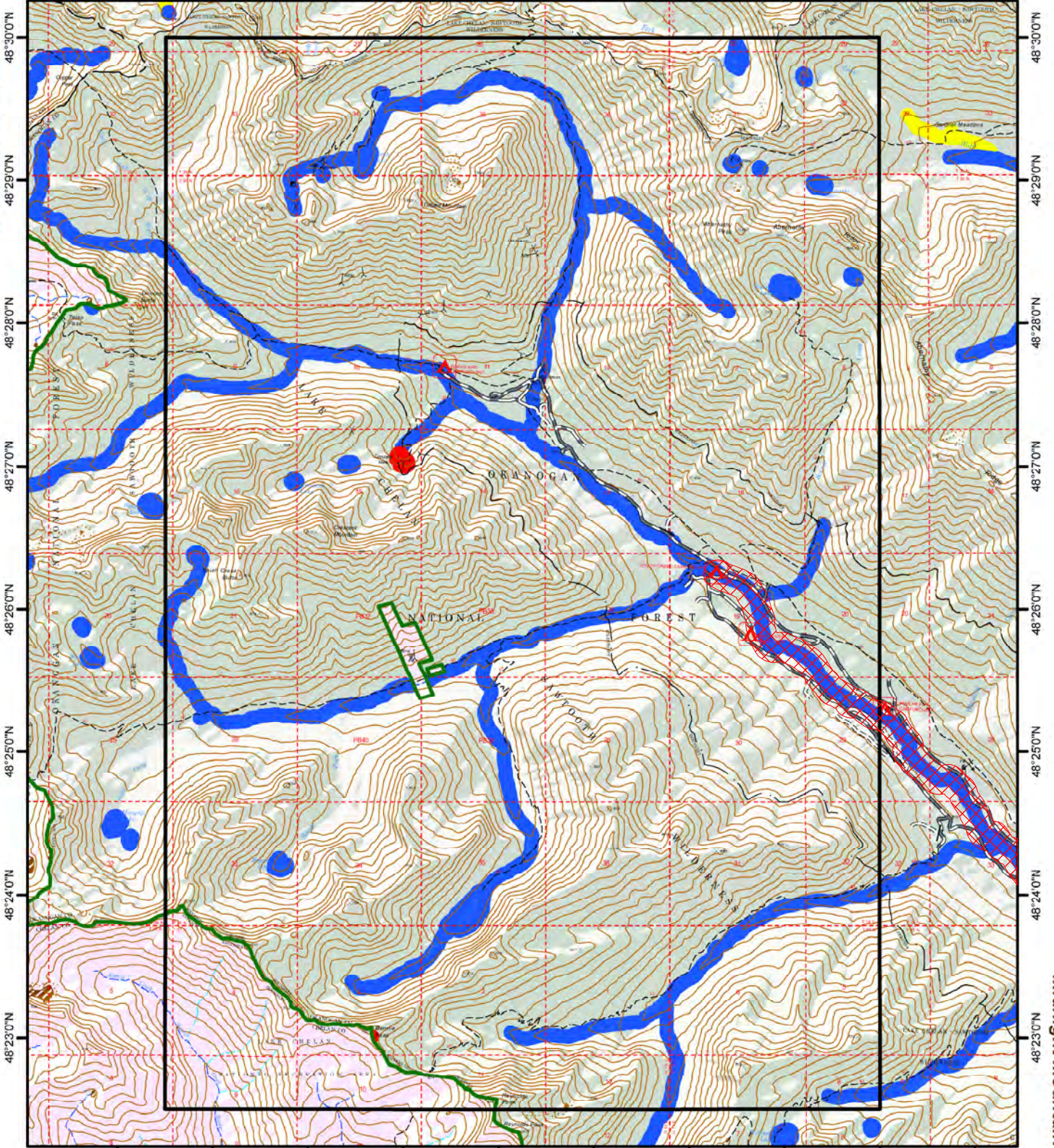
Gilbert Quad



2017 Spring Chinook Avoidance Areas

120°38'0"W 120°37'0"W 120°36'0"W 120°35'0"W 120°34'0"W 120°33'0"W 120°32'0"W 120°31'0"W 120°30'0"W 120°29'0"W

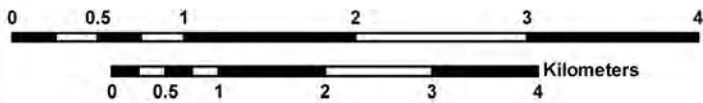
McAlester Mountain



Midnight Mountain

120°38'0"W 120°37'0"W 120°36'0"W 120°35'0"W 120°34'0"W 120°33'0"W 120°32'0"W 120°31'0"W 120°30'0"W 120°29'0"W

Sun Mountain



Note: This map is solely intended to depict relevant Threatened, Endangered, Proposed, Candidate, and Sensitive Species, along with streams and water bodies as a planning tool for decisions with regard to aerial fire retardant avoidance.

March 11, 2017