

Decision Support for Aerial Fire Retardant Avoidance

Okanogon-Wenatchee National Forest

Baldy Mountain Quad

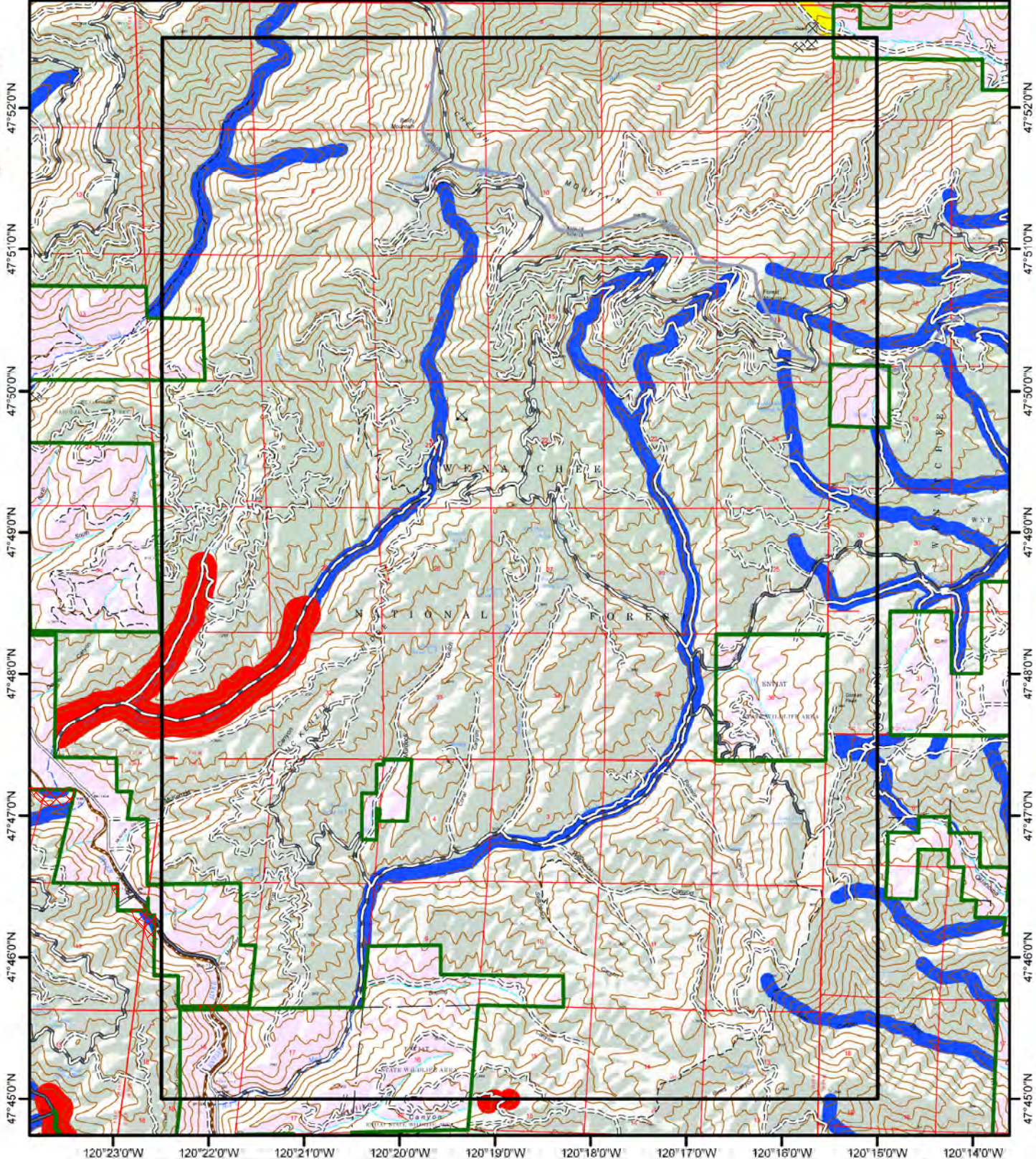


2017 Spring Chinook Avoidance Areas

Stormy Mountain

120°23'0"W 120°22'0"W 120°21'0"W 120°20'0"W 120°19'0"W 120°18'0"W 120°17'0"W 120°16'0"W 120°15'0"W 120°14'0"W

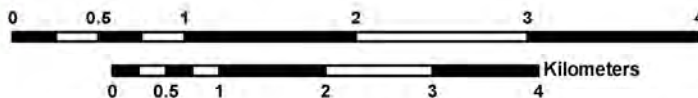
Tyee Mountain



Winesap

120°23'0"W 120°22'0"W 120°21'0"W 120°20'0"W 120°19'0"W 120°18'0"W 120°17'0"W 120°16'0"W 120°15'0"W 120°14'0"W

Ardenvoir



Note: This map is solely intended to depict relevant Threatened, Endangered, Proposed, Candidate, and Sensitive Species, along with streams and water bodies as a planning tool for decisions with regard to aerial fire retardant avoidance.

March 11, 2017