

**CFLR Project (Name/Number): CFLN20 Missouri Pine-Oak Woodlands Restoration Project****National Forest(s): Mark Twain National Forest**

*Responses to the prompts in this annual report should be typed directly into the template. Example information is included in red below. Please delete red text before submitting the final version.*

**1. Match and Leveraged funds:****a. FY15 Matching Funds Documentation**

<b>Fund Source – (CFLN/CFLR Funds Expended<sup>1</sup>)</b>	<b>Total Funds Expended in Fiscal Year 2015(\$)</b>
CFLN14	\$18,810.72
CFLN15	\$645,951.64

<b>Fund Source – (Funds expended from Washington Office funds (in addition to CFLR/CFLN)<sup>2</sup> (please include a new row for each BLI))</b>	<b>Total Funds Expended in Fiscal Year 2015(\$)</b>
NFVW13	\$525,999.45

<b>Fund Source – (FS Matching Funds (please include a new row for each BLI)<sup>3</sup>)</b>	<b>Total Funds Expended in Fiscal Year 2015(\$)</b>
CMRD15	\$8,673.3
NFTM15	\$460,357.30
WFHF15	\$18,260.63
CWKV13	\$9,2981.91
NFLM15	\$1,110.00
NFVW15	\$128,981.61
FNVW15	\$125,491.71
WFHF15	\$182,960.63

<b>Fund Source – (Funds contributed through agreements<sup>4</sup>)</b>	<b>Total Funds Expended in Fiscal Year 2015(\$)</b>
n/a	n/a

<b>Fund Source – (Partner In-Kind Contributions<sup>5</sup>)</b>	<b>Total Funds Expended in Fiscal Year 2015(\$)</b>
Northern Research Station Interagency Agreement – Bird Monitoring	\$28,000
Central Hardwood Joint Ventures – Bird Monitoring	\$500
Northern Research Station Interagency Agreement - IMPLAN and Economic Analysis	\$39,995

<sup>1</sup> This amount should match the amount of CFLR/CFLN dollars obligated in the PAS expenditure report. Include prior year CFLN dollars expended in this Fiscal Year.

<sup>2</sup> This value (aka carryover funds or WO unobligated funds) should reflect the amount expended of the allocated funds as indicated in the FY15 program direction, but does not necessarily need to be in the same BLIs or budget fiscal year as indicated in the program direction.

<sup>3</sup> This amount should match the amount of matching funds obligated in the PAS expenditure report. These funds plus the Washington Office funds (unobligated funds) listed above should total the matching funds obligated in the PAS report.

<sup>4</sup> Please document any partner contributions to implementation and monitoring of the CFLR project through an income funds agreement (this should only include funds that weren't already captured through the PAS job code structure for CFLR matching funds). Please list the partner organizations involved in the agreement.

<sup>5</sup> Total partner in-kind contributions for implementation and monitoring of a CFLR project. Partner contributions for Fish, Wildlife,

**For Contracts Awarded in FY15**

<b>Service work accomplishment through goods-for services funding within a stewardship contract</b>	<b>373 Acres</b>
Total amount of stewardship <u>credits charged</u> for contracts awarded in FY15 <sup>6</sup>	\$0
Total <u>revised credit limit</u> for contracts awarded in FY15 <sup>7</sup>	\$0

**For Contracts Awarded Prior to FY15**

<b>Service work accomplishment through goods-for services funding within a stewardship contract</b>	<b>373 Acres</b>
Total amount of stewardship <u>credits charged</u> in FY15 <sup>8</sup>	\$41,108.00
Total <u>revised credit limit</u> for open and closed contracts awarded and previously reported prior to FY15 <sup>9</sup>	\$67,735

**b. Please provide a narrative or table describing leveraged funds in your landscape in FY2015 (one page maximum). Leveraged funds refer to funds or in-kind services that help the project achieve proposed objectives but do not meet match qualifications. Examples include but are not limited to: investments within landscape on non-NFS lands, investments in restoration equipment, worker training for implementation and monitoring, and purchase of equipment for wood processing that will use restoration by-products from CFLR projects. See “Instructions” document for additional information.**

No leverage funds were identified for this

**2a. Discuss how the CLFR project contributes to accomplishment of the wildland fire goals in the 10-Year Comprehensive Strategy Implementation Plan and describe the progress to date on restoring a more fire-adapted ecosystem, as identified in the project’s desired conditions. This may also include a description of the current fire year (fire activity that occurred in the project area) as a backdrop to your response (please limit answer to one page).**

The Forest accomplished significant progress in hazardous fuels treatments across the CFLRP landscape. Fuels reduction and ecosystem enhancement/restoration utilizing prescribed fire occurred on twenty-four burn units covering over 11,239 acres. Secondary fuel treatment occurred on another 1,941 acres with commercial harvest and pre-commercial thinning activities. Under Wyden authority 620 acres of prescribed fire was completed on private land.

- All wildfires within the CFLR boundary were controlled during initial attack in FY 15. There were no wildfires in the CFLR project area which required recovery plans or treatments. There are no areas on MTNF identified or designated for wildland fire use at this time.
- There were 7 wildfires on the Eleven Point District and 0 wildfires on the Poplar Bluff District, which is lower than annual average for these 2 units.
- The Forest has updated the WUI spatial layer for the Forest and the CFLR project area.
- All treated acres moved toward desired conditions. Treatments are designed to restore fire-adapted ecosystems and facilitate fire suppression as described in the National Fire Plan. Although many of these areas have been

Watershed work can be found in WIT database. Please list the partner organizations that provided in-kind contributions.

<sup>6</sup> This should be the amount in the “stewardship credits charged” column at the end of the fiscal year in the TSA report TSA90R-01.

<sup>7</sup> This should be the amount in contract’s “Progress Report for Stewardship Contracts, Integrated Resources Contracts or Agreements” in cell J46, the “Revised Credit Limit,” as of *September 30*. Additional information on the Progress Reports is available in CFLR Annual Report Instructions document.

<sup>8</sup> This should be the amount in the “stewardship credits charged” column at the end of the fiscal year in the TSA report TSA90R-01.

<sup>9</sup> This should be the amount in each contract’s “Progress Report for Stewardship Contracts, Integrated Resources Contracts or Agreements” in cell J46, the “Revised Credit Limit.” *For open contracts*, this should be as of September 30. *For closed contracts*, this should be at the time of contract closure.

treated more than once, none have achieved desired conditions yet.

**2b. In no more than two pages** (large landscapes or very active fire seasons may need more space), **describe other relevant fire management activities within the project area** (hazardous fuel treatments will be documented in Question #6):

There were no wildfires within the CFLRP project area. No changes in suppression cost.

**3. What assumptions were used in generating the numbers and/or percentages you plugged into the TREAT tool?** Information about Treatment for Restoration Economic Analysis Tool inputs and assumptions available here – <http://www.fs.fed.us/restoration/documents/cflrp/R-CAT/TREATUserGuide10112011.pdf>.

The inputs used in generating the number and/or percentages for CFLR/N and all matching funds are derived from WorkPlan and expenditure reports (transaction register). Product distributions were generated from TIMs cut and sold report.

**FY 2015 Jobs Created/Maintained (FY15 CFLR/CFLN/ WO carryover funding):**

Type of projects	Direct part and full-time jobs	Total part and full-time jobs	Direct Labor Income	Total Labor Income <sup>10</sup>
Commercial Forest Product Activities	77	131	2,900,897	4,771,946
Other Project Activities	12	15	406,217	475,453
<b>TOTALS:</b>	<b>89</b>	<b>146</b>	<b>3,307,114</b>	<b>5,247,399</b>

**FY 2015 Jobs Created/Maintained (FY15 CFLR/CFLN/ WO carryover and matching funding):**

Type of projects	Direct part and full-time jobs	Total part and full-time jobs	Direct Labor Income	Total Labor Income <sup>11</sup>
Commercial Forest Product Activities	77	131	2,900,897	4,771,946
Other Project Activities	14	17	842,273	966,245
<b>TOTALS:</b>	<b>91</b>	<b>148</b>	<b>3,743,170</b>	<b>5,738,191</b>

**4. Describe other community benefits achieved and the methods used to gather information about these benefits. How has CFLR and related activities benefitted your community from a social and/or economic standpoint?** (Please limit answer to two pages).

Please refer to the IMPLAN discussion below.

**5. Based on your project monitoring plan, describe the multiparty monitoring process. What parties (who) are involved in monitoring, and how? What is being monitored? Please briefly share key broad monitoring results and how results received to date are informing subsequent management activities** (e.g. adaptive management), if at all. **What are the current weaknesses or shortcomings of the monitoring process?** (Please limit answer to two pages. Include a link to your monitoring plan if it is available).

**IMPLAN Analysis**

The Mark Twain National Forest collaborated with the Northern Research Station and the University of Missouri to take a

<sup>10</sup> Values obtained from Treatment for Restoration Economic Analysis Tool (TREAT) spreadsheet, "Impacts-Jobs and Income" tab. Spreadsheet and directions available at <http://www.fs.fed.us/restoration/CFLR/submittingproposals.shtml#tools>.

<sup>11</sup> Values obtained from Treatment for Restoration Economic Analysis Tool (TREAT) spreadsheet, "Impacts-Jobs and Income" tab. Spreadsheet and directions available at <http://www.fs.fed.us/restoration/CFLR/submittingproposals.shtml#tools>.

more detailed look at the economic impacts of the Missouri Pine-Oak Woodlands Restoration CFLRP is having on nine counties in south eastern Ozarks. The Northern Research Station facilitated an IMPLAN analysis conducted by the University Of Missouri School Of Forestry. A final peer reviewed published report will be completed by January 2016. This analysis was precipitated due to concerns expressed by interested parties about possible negative impacts pine restoration would have on Missouri's timber industry. The IMPLAN analysis was conducted by Francisco X. Aguilar, Ph.D. and Nianfu Song, University of Missouri, School of Natural Resources.

The Missouri Pine-Oak Restoration Project is slated for implementation across 126 thousand acres within the Mark Twain National Forest (MTNF). This area corresponds to about 8% of MTNF. About \$20 million will be invested to implement the project with one half funded through the CFLRP national fund and the other half through the Knutson-Vandenberg Fund and nongovernmental sources. The \$20 million invested on MTNF-CFLRP implementation over the 2012-2019 period are expected to support an average of 141 jobs, generate \$33.7 million in labor income and contribute \$44.2 million in added value to the regional 9-county economy. Merchantable tree volume at the end of this period is expected to exceed the initial amount by 14% although growth in timber volume will be lower than if the MTNF-CFLRP had not been implemented. Given the size and scope of the MTNF-CFLRP there were no sizeable or discernable negative effects to the local wood products industry although impacts on particular industry segments will need further evaluation.

### Highlights

- Lands managed under the Mark Twain National Forest Collaborative Forest Land Restoration Project (MTNF-CFLRP) represent about 0.8% of all Missouri forests and 8% of lands in the Mark Twain National Forest.
- Results from economic and vegetation models show that total MTNF-CFLRP investments and subsequent implementation activities from 2012 to 2019 will likely result in:
- Annual average 141 jobs supported, \$33.7 million in labor income, and \$44.2 million in added economic value to the local economy (9-county region where the project is expected to have its largest impact)
- \$2.2 of value added to the local economy for every dollar invested
- 9.2 million in tax revenues
- Merchantable tree volume by the end of 2019 is estimated to be 14% greater with the implementation of the MTNF-CFLRP as compared to initial conditions.

### Bird Monitoring

The Missouri Pine-Oak Woodland Restoration Project implemented bird monitoring to 1) determine changes in abundance in response to restoration activities in the cooperative forest landscape restoration projects (CFLR) and 2) determine relationships between bird abundance and vegetation structure and composition in the Mark Twain National Forest. Objective 1 will require bird surveys spaced over the duration of the project. However, initial results from objective 2 will be available after 3 years based on the current variation in structure and management that has already taken place.

The Northern Research Station received \$20,000 from the Mark Twain National Forest through an In-service Agreement to implement bird monitoring in 2015. An additional \$28,000 in in-kind contributions from Northern Research Station and \$500 for effort from the Central hardwoods Joint Venture (USFWS) where contributed to this effort.

Monitoring crews conducted diurnal bird surveys at 151 FQI (Floristic Quality Inventory) points and 100 additional grid points within the CFLR project area in portions of the Eleven Point and Poplar Bluff Ranger Districts between May 27 and June 31, 2015; these were the same points surveyed in 2013 and 2014.

Detection of similar numbers of birds on diurnal point counts across all three years with the exception of a noticeable

decrease in Acadian Flycatcher detections in 2015 (Table 1). Abundant number of species characteristic of open woodland and savanna (e.g. Prairie warbler, Yellow-breasted chat) as well as species characteristic of closed canopy forest (e.g. Acadian flycatcher, Ovenbird; Table 1) were detected in 2015.

Continued monitoring efforts for reproductive success started in 2014. Monitored nest success on two new plots in the project area from April 1 to August 8, 2015. Two 70 hectare plots that contained point counts and included stands with recent restoration management and stands with no recent management. Searched for and monitored nests of six species commonly found in savanna and woodland and that also span the range of nest height placement: Eastern Towhee, Yellow-breasted Chat, Prairie Warbler, Summer Tanager, Eastern Wood-Pewee, and Pine Warbler (Table 2).

Continued nocturnal roadside surveys for Eastern Whip-poor-will and Chuck-will's-widow started in 2014. We used a modified protocol from the National Nightjar Survey Network and conducted 152 point counts along county and forest roads within and around the CFLR project area from April 30 to June 30, 2015. 244 Eastern Whip-poor-will and 121 Chuck-will's-widow were detected in 2015 (Table 3).

**Future work.**—During the fall and winter of 2015-2016 we will complete analyses to predict abundance of the focal species from the diurnal point counts and nocturnal roadside surveys in relation to key habitat parameters like tree density, amount of pine, and fire history. In addition we will estimate nest success for focal species and its relationship to habitat factors. Investigators will prepare several manuscripts to be submitted for publication in peer-reviewed journals on these monitoring efforts. Tentative plans are to repeat this survey effort near the end of the current proposed forest restoration project.

**Table 1 Total number of bird detections by species on 251 point count surveys from 2013 – 2015.**

Species	Detections 2013	Detections 2014	Detections 2015
Acadian flycatcher	136	105	60
Black-and-white warbler	37	39	61
Blue-winged warbler	6	18	20
Eastern towhee	95	103	101
Eastern wood-pewee	220	283	260
Kentucky warbler	21	24	36
Ovenbird	144	148	165
Pine warbler	246	236	198
Prairie warbler	93	74	108
Red-headed woodpecker	70	41	41
Summer tanager	112	157	198
White-eyed vireo	34	40	55
Worm-eating warbler	59	47	54
Wood thrush	20	18	22
Yellow-breasted chat	227	225	217

**Table 2 Number songbird nest monitored in 2014 and 2015.**

Species	nest monitored 2014	nest monitored 2015
Eastern towhee	33	25
Yellow-breasted chat	56	42
Prairie warbler	2628	27

Species	nest monitored 2014	nest monitored 2015
Summer Tanager	n/a	30
Eastern wood-pewee	55	79
Pine warbler	37	29

**Table 3 Total number of individual detected on 389 points in 2014 and 2015.**

Species	Number of Detections 2014	Number of Detections 2015
Eastern Whip-poor-will	290	244
Chuck-will's-widow	65	121

### Smoke Monitoring

As a result of public concerns over prescribed fire activities and the effects this may have on air quality, the Forest has initiated additional smoke monitoring efforts to start in FY 2016. The Region has purchased for the Forest two E-Samplers that utilized at receptor sites at selected prescribed burns based on smoke modeling by the Regional Air Quality Specialist. In addition, fixed visual smoke monitoring cameras will be placed in the key location (e.g. tower sites) within the project area.

### 6. FY 2015 accomplishments

Performance Measure	Unit of measure	Total Units Accomplished <sup>12</sup>	Total Treatment Cost (\$)	Type of Funds (CFLR, Specific FS BLI, Partner Match) <sup>13</sup>
n/a	Acres	129	57.40/ac Contract Cost	CFVW - Tree Planting Contract \$1,148 CFVW Tree Planting Contract \$5,281 CWKV - Tree Seedlings \$18,135
Acres of forest vegetation improved FOR-VEG-IMP	Acres	3,043	72.00/ac Contract Cost	CFTM - TSI Contract \$15,535 CFVW TSI Contract \$22,027 CWKV TSI Contract \$15,535 CFVW Reforestation Site Prep Contract \$15,000 CFVW PCT Contract \$12,500
Manage noxious weeds and invasive plants INVPLT-NXWD-FED-AC	Acre	420.3	Spraying \$95 - \$200/ac Contract Cost; Mowing/Fire \$25/ac Force Account	CFVW - Fremont-Pineknott East Spraying Contract \$21,280 - 244 ac FNWV - Cane Ridge West Spraying Contract - \$20,000 - 215 acres CFLN - Cane Ridge West Spraying Contract - \$10,000 - 215 acres

<sup>12</sup> Units accomplished should match the accomplishments recorded in the Databases of Record.

<sup>13</sup> Please use a new line for each BLI or type of fund used. For example, you may have three lines with the same performance measure, but the type of funding might be two different BLIs and CFLR/CFLN.

Performance Measure	Unit of measure	Total Units Accomplished <sup>12</sup>	Total Treatment Cost (\$)	Type of Funds (CFLR, Specific FS BLI, Partner Match) <sup>13</sup>
Acres of water or soil resources protected, maintained or improved to achieve desired watershed conditions. S&W-RSRC-IMP	Acres	18,514.66	Integrated	CFLN – 946 acres CFTM – 91 acres CFVW – 1,000 acres CFWF – 3,111 acres CFHF – 11,243 acres
Acres of terrestrial habitat restored or enhanced HBT-ENH-TERR	Acres	17,287.13	Integrated	CFLN – 946 acres CFTM – 91 acres CFVW – 1,000 acres CFWF – 3,111 acres CFHF – 11,243 acres
Miles of high clearance system roads receiving maintenance RD-HC-MAIN	Miles	5.37 <sup>14</sup>	n/a	CFVW Road Improvement Contract, Goldi \$116,079 CFVW Road Improvement Contract, Shertz \$126,289
Miles of passenger car system roads receiving maintenance RD-PC-MAINT	Miles	19.72	n/a	CFVW Road Improvement Contract, Goldi \$116,079 – 12.03 miles CFVW Road Improvement Contract, Shertz \$126,289 FNVW Road Improvement Contract - \$71,700 – 7.69 miles
Miles of road decommissioned RD-DECOM	Miles	6	n/a	Timber Sale Contracts
Miles of high clearance system road improved RD-HC-IMP	Miles	5.37	n/a	CFVW Road Improvement Contract, Goldi \$116,079 – 0.51 miles CFVW Road Improvement Contract, Shertz \$126,289 – 4.86 miles
Miles of property line marked/maintained to standard LND-BL-MRK-MAINT	Miles	15 <sup>15</sup>	8,000/mile	CFLN Landline Survey Contract- \$100,000.00-
Acres covered by stewardship contracts/agreements STWD-CNTRCT-AGR-AC	Acres	722	n/a	n/a
Acres of forestlands treated using timber sales TMBR-SALES-TRT-AC	Acres	1,083	n/a	n/a

<sup>14</sup> Value in PAS as RD-HC\_RCNSTR<sup>15</sup> Value not included in official database of record (Performance Accountability System)

Performance Measure	Unit of measure	Total Units Accomplished <sup>12</sup>	Total Treatment Cost (\$)	Type of Funds (CFLR, Specific FS BLI, Partner Match) <sup>13</sup>
Volume of Timber Harvested TMBR-VOL-HVST	CCF	16,710.7	n/a	CFTM – Timber Sale Contracts
Volume of timber sold TMBR-VOL-SLD	CCF	18,626.2	n/a	CFLN Timber Marking Contracts \$34,698 CFVW Timber Marking Contracts \$55,985
Green tons from small diameter and low value trees removed from NFS lands and made available for bio-energy production BIO-NRG	Green tons	5,570	n/a	n/a
Acres of hazardous fuels treated outside the wildland/urban interface (WUI) to reduce the risk of catastrophic wildland fire FP-FUELS-NON-WUI	Acre	7,207	Prescribed Fire \$15/ac	WFHF Helicopter \$9,500 WFHF Salary \$165,201
Acres of wildland/urban interface (WUI) high priority hazardous fuels treated to reduce the risk of catastrophic wildland fire FP-FUELS-WUI	Acres	6,995	n/a	n/a

**7. FY 2015 accomplishment narrative – Summarize key accomplishments and evaluate project progress.** (Please limit answer to three pages.)

**Planning:** The Forest completed the Fremont and Pineknott East Restoration Project Environmental Assessment and draft decision notice of June 9, 2015. The decision received pre-decisional objections under 36 C.F.R §218.5 and a Project-Level Pre-Decisional Administrative Review Process was completed and a final decision was signed on July 31, 2015. The final decision authorizes the following additional activities to occur within the Missouri Pine-Oak Woodland Restoration CFLR Project.

- Prescribed Fire Management 23,558 acres every 2 to 5 years to restore pine and pine-oak woodlands
- Vegetation Management - 4,211 acres of commercial thinning; 2,379 acres of salvage and sanitation harvest; 978 acres of seed tree harvest; 33 acres of shelterwood harvest; 78 acres of clearcut; 2,132 acres of precommercial thinning; 6,448 acres of understory vegetation control; 2,545 acres of pine planting and 15 acres of glade restoration.
- Transportation Management – Re-construct 15 miles of system roads; maintain 27.6 miles of system road; decommission 19 miles of non-system roads.
- Recreation – Relocate 1.4 miles of the Ozark National Recreation Trail.
- Wildlife – Maintain 10 wildlife ponds and reconstruct 2 ponds.



**Contracting/Grants and Agreements:** The following contracted activities occurred in 2015 within the CFLRP project area.

- 16 active timber sales with 10 separated purchasers.
- Five TSI/Site-prep Contracts
- Two Timber Marking Contracts
- Three Road Improvement Contracts
- Two NNIP Spraying Contracts
- One land line survey contract
- Three Private landowner prescribed fire participating agreements (Agreement No: 15-PA-11090523-006 thru 008)
- Challenge Cost Share Agreement with Missouri State University to conduct a watershed monitoring study of prescribed fire effects (Agreement No: 15-CS-11090500-033).

**Feral Hog eradication:** The Forest invested \$10,000 of CFLN to its existing Interagency Agreement with USDA Animal and Plant Health Inspection Services, Wildlife Services (IAA number 141A11090500011). Funding from AHPIS, Missouri Department of Conservation and the Corp of Engineers was used to hire an additional Wildlife Services employee solely responsible for feral hog eradication in Southeast Missouri. The additional Forest Service funding has increases feral hog trapping within the CFLRP project area. Within the CFLRP project area three traps were constructed and utilized resulting in over forty feral hogs remove from the Cane Ridge unit utilizing traps. Aerial gunning of feral hogs also occurred on the Cane Ridge unit covering approximately 30,000 acres. This resulted in another nine pigs removed. These efforts will continue in 2016. This activity is vital to removing the negative impacts feral hog on having on vegetation, soil and water resources, wildlife and wildlife habitats, public safety and to protect the Forest Service investment in restoration activities that are occur as a result of the CFLR program.

**Joint Chiefs Landscape Restoration Partnership Project – Missouri Ozark Highlands Restoration Partnership:**

In 2015 the Mark Twain National Forest initiated its partnership with Natural Resource Conservation Service (NRCS) to implement its goal of unifying conservation priorities across organizations and property boundaries by broadening the reach of conservation within the Current River Watershed. Partners for this Project include: Missouri Department of Conservation; The Nature Conservancy; U.S. Fish and Wildlife Service; National Wild Turkey Federation; Missouri Forest Products Association; National Park Service Ozark National Scenic Riverways; USDA National Agroforestry Center; Central Hardwoods Joint Venture; Missouri Forest Resources Advisory Council; Missouri Department of Natural Resources.

The project received funding for \$625,000, with \$125,000 going to the Forest Service and \$500,000 to the NRCS. The Mark Twain completed 7.69 miles of road maintenance, 157.4 acres of invasive plant treatments (herbicide) and mapped and inventoried 954 acres of new non-native invasive plant populations. The NRCS obligated \$501,172.68 of funding toward Environmental Quality Incentive Plan (EQIP) Conservation practices of which a large portion of these practices will be occurring within 9 counties the Current River Watershed. Within these counties, 28 contracts were awarded totaling \$268,889 to implement core conservation practices approved by forest management plans on private lands.

The Mark Twain National Forest and NRCS are also partnering with the National Wild Turkey Federation (NWTF) to hire a shared position funded by the Forest Service, NRCS and NWTF. This new NWTF Forester position will assist NRCS EQIP program and the Forest Service with Stewardship contracts (Agreement No: 15-CS-110905000-033)

**8. Describe the total acres treated in the course of the CFLR project (cumulative footprint acres; not a cumulative total of performance accomplishments). What was the total number of acres treated?<sup>16</sup>**

Fiscal Year	Total number of acres treated (treatment footprint)
Total in FY15	36,310.00
FY10, FY11, FY12, FY13, FY14, and FY15 (as applicable- projects selected in FY2012 may will not have data for FY10 and FY11; projects that were HPRP projects in FY12, please include one number for FY12 and one number for FY13 (same as above))	FY12 – 16,183 acres FY13 – 8,601 acres FY14 – 6,532 acres FY15 – 4,992 acres

**Please briefly describe how you arrived at the total number of footprint acres: what approach did you use to calculate the footprint?**

The treatment footprint is compiled using FACTS Activity Polygon EDW by selecting out all appropriate management activities. Activities are then selected that do not overlap any previous year’s activities, thus eliminating overlay. These units are then merged and then copied into a shapefile containing all fiscal year activities for the CFLRP area.

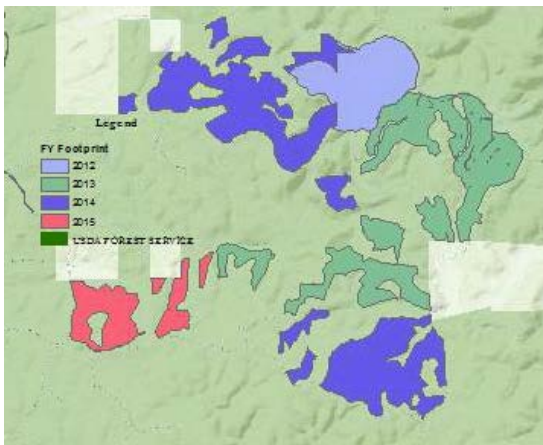


Figure 1 Example of Treatment footprint

**9. Describe any reasons that the FY 2015 annual report does not reflect your project proposal, previously reported planned accomplishments, or work plan. Did you face any unexpected challenges this year that caused you to change what was outlined in your proposal? (please limit answer to two pages).**

There are no significant discrepancies between the FY 2015 accomplishments and what was previously identified in work plans or the initial proposal.

<sup>16</sup> This metric is separate from the annual performance measurement reporting as recorded in the databases of record. Please see the instructions document for further clarification.

10. Planned FY 2017 Accomplishments<sup>17</sup>

Performance Measure Code <sup>18</sup>	Unit of measure	Planned Accomplishment	Amount (\$)
Acres treated annually to sustain or restore watershed function and resilience WTRSHD-RSTR-ANN	Acres	n/a	n/a
Acres of forest vegetation established FOR-VEG-EST	Acres	400	\$24,000
Acres of forest vegetation improved FOR-VEG-IMP	Acres	5,000	\$375,00
Manage noxious weeds and invasive plants INVPLT-NXWD-FED-AC	Acre	n/a	n/a
Highest priority acres treated for invasive terrestrial and aquatic species on NFS lands INVSPE-TERR-FED-AC	Acres	400	\$40,000
Acres of water or soil resources protected, maintained or improved to achieve desired watershed conditions. S&W-RSRC-IMP	Acres	15,000	Integrated
Acres of terrestrial habitat restored or enhanced HBT-ENH-TERR	Acres	15,000	Integrated
Miles of high clearance system roads receiving maintenance RD-HC-MAIN	Miles	8	n/a
Miles of passenger car system roads receiving maintenance RD-PC-MAINT	Miles	10	\$25,000
Miles of road decommissioned RD-DECOM	Miles	5	n/a
Miles of passenger car system roads improved RD-PC-IMP	Miles	n/a	n/a
Miles of high clearance system road improved RD-HC-IMP	Miles	n/a	n/a
Miles of property line marked/maintained to standard LND-BL-MRK-MAINT	Miles	5	n/a
Acres of forestlands treated using timber sales TMBR-SALES-TRT-AC	Acres	800	n/a

<sup>17</sup> Please note that planned accomplishments are aggregated across the projects to determine the proposed goals for the program's outyear budget justification. These numbers should reflect what is in the CFLRP work plan, with deviations described in question 12.

<sup>18</sup> Please include all relevant planned accomplishments, assuming that funding specified in the CFLRP project proposal for FY 2017 is available. Use actual planned funding if quantity is less than specified in CFLRP project work plan.

Performance Measure Code <sup>18</sup>	Unit of measure	Planned Accomplishment	Amount (\$)
Volume of Timber Harvested TMBR-VOL-HVST	CCF	8,000	n/a
Volume of timber sold TMBR-VOL-SLD	CCF	18,000	n/a
Green tons from small diameter and low value trees removed from NFS lands and made available for bio-energy production BIO-NRG	Green tons	5,000	n/a
Acres of hazardous fuels treated outside the wildland/urban interface (WUI) to reduce the risk of catastrophic wildland fire FP-FUELS-NON-WUI	Acre	8,000	\$96,000
Acres of wildland/urban interface (WUI) high priority hazardous fuels treated to reduce the risk of catastrophic wildland fire FP-FUELS-WUI	Acres	8,000	\$96,000

**11. Planned FY 2017 accomplishment narrative** (no more than 1 page).

The FY 2017 program of work will continue to focus on awarding timber sale contracts, stewardship contracts and understory thinning contracts. In 2017, the Forest will be implementing timber sales and prescribed fire activities in the Fremont-Pineknott East project area. In addition, the Forest will begin to re-measure grid inventory plots that have previously been established in the project area.

**12. Describe and provide narrative justification if planned FY 2016/17 accomplishments and/or funding differs from CFLRP project work plan** (no more than 1 page):

At this stage of the project, there are no significant deviation from what was proposed and what is being accomplished on the ground.

**13. Please include an up to date list of the members of your collaborative** (name and affiliation, if there is one). **If the information is available online, you can simply include the hyperlink here. If you have engaged new collaborative members this year, please provide a brief description of their engagement.**

Central Hardwoods Joint Ventures – Jane Fitzgerald

The Nature Conservancy – Doug Ladd and Rebecca Landewe.

Missouri Department of Conservation

Northern Research Station

National Wild Turkey Federation - John Burk

National Resource Conservation Service

**14. How has your project increased support from partners in terms of in-kind contributions and funding? (no more than one page):**

No

**15. Media recap. Please share with us any hyperlinks to videos, newspaper articles, press releases, scholarly works, and photos of your project in the media that you have available.**

None available at this time.

**Signatures:**

Recommended by (Project Coordinator(s)): /s/ Brian Davidson

Approved by (Forest Supervisor(s))<sup>19</sup>: \_\_\_\_\_

(OPTIONAL) Reviewed by (collaborative chair or representative): \_\_\_\_\_

---

<sup>19</sup> If your project includes more than one National Forest, please include an additional line for each Forest Supervisor signature.