

Soil Moisture and Temperature Regimes and Western Juniper in Eastern Oregon

USDA Forest Service
Pacific Northwest
Research Station
General Technical Report
PNW-GTR-464
Map 4

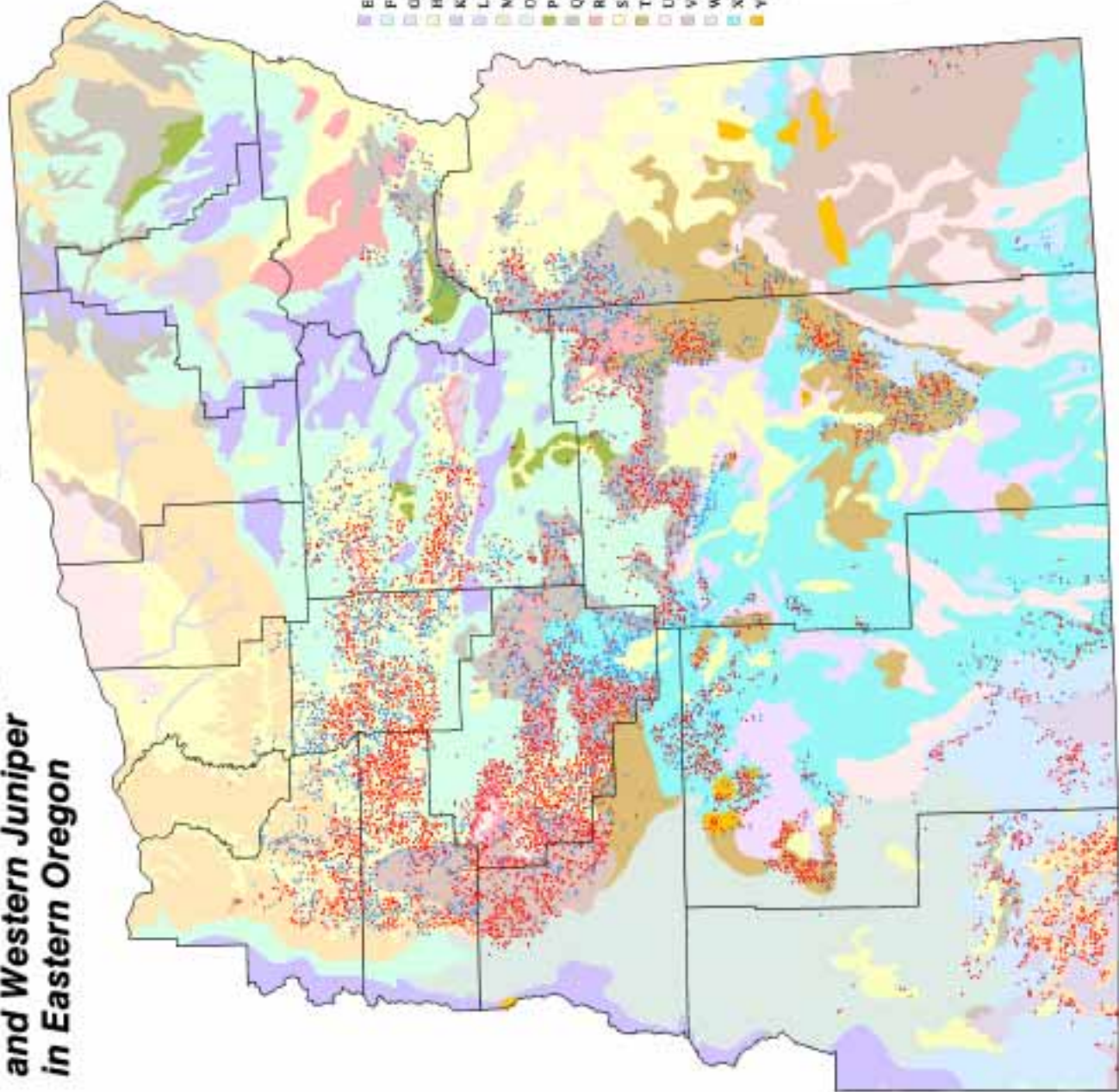


Western Juniper Sample Locations

- \geq 10% crown cover, 1988
- < 10% crown cover, 1988

Soil Regimes

- E Udic Cryic soils of the high Cascade and Willows Mountains
- F Xeric Cryic soils of the high Plateaus and Mountains
- G Xeric Cryic soils on Pinnacel Mountain Forested Plateaus
- H Aquic Frigid and Cryic soils of basins and valleys
- K Xeric Mesis soils on forested mountains and hills
- L Xeric Mesis soils on terraces and flood plains
- M Xeric Mesis soils on grass- shrub uplands
- O Xeric Frigid soils on forested mountains and plateaus
- P Xeric Frigid soils on terraces and flood plains
- Q Xeric Frigid soils on grass- shrub uplands
- R Xeric/Aridic Mesis soils on terraces and flood plains
- S Xeric/Aridic Mesis soils on grass- shrub uplands
- T Xeric/Aridic Frigid soils on grass- shrub uplands
- U Aridic/Xeric Mesis soils on terraces and flood plains
- V Aridic/Xeric Mesis soils on grass- shrub uplands
- W Aridic/Xeric Frigid soils on terraces and in basins
- X Aridic/Xeric Frigid soils on plateaus and uplands
- Y Insa fluvis



Soil Data From:
General soil map, State of Oregon
USDA Soil Conservation Service
(National Resource Conservation Service)
General Soils 4-P-30694 (January 1985)



Forest Inventory and Monitoring Research Program
Pacific Northwest Research Station
USDA Forest Service

June 1998
Prepared by: John Wynneman and Alan Moran