



Stewplan: Software for Creating Forest Stewardship Plans

United States
Department of
Agriculture

Peter D. Knopp and Mark J. Twery

Forest Service

**Northeastern
Research Station**

General Technical
Report NE-301



Stewplan

NOTE

Download the software from www.fs.fed.us/ne/burlington/ned

or

Order the cd from the following address:

USDA Forest Service
Publications Distribution
359 Main Road
Delaware, OH 43015-8640
Fax: (740)368-0152

Stewplan: Software for Creating Forest Stewardship Plans

Introduction

Forest stewardship is defined as maintaining a healthy, productive forest for present and future generations. Forest stewardship is a goal of many landowners and others in the natural resource management community. Establishing long-term plans for your forested property is a first step toward good stewardship. Stewardship plans are a prerequisite to enroll private forest lands in the Stewardship Program sponsored by the U.S. Department of Agriculture Forest Service and state agencies throughout the United States. An appropriate management plan considers the needs and desires of the landowner and identifies how those objectives can be met. Stewplan is software that helps create standard forest stewardship plans to facilitate enrollment in the program. The objective is to produce a clear, concise document in which the reader of a stewardship plan can follow the flow of ideas and understand what should be done and why. Intended users of the Stewplan software include all professionals who may be charged with preparing stewardship plans. It will also help informed amateurs, including landowners themselves, to prepare adequate stewardship plans. The software has been approved by numerous states and is being used by a growing number of consulting and service foresters to organize and present information on forest ownership and boundaries, stand inventory characteristics, landowner goals, harvest schedules, and other features necessary for stewardship plans. It produces a written plan that can be printed and submitted to the Stewardship Program, or a hypertext file that can be modified in a separate word processor. Stewplan is distributed without charge.

Stewplan offers a familiar Windows® interface with a top-level menu structure, toolbars, and status bar. The main application area is divided into seven tabs that correspond to logical sections of a forest stewardship plan. Stewplan produces a nearly complete stewardship plan, needing only a map and a few other external pieces to provide an acceptably formatted plan. The content and the actions proposed in the plan are left entirely to the professional preparing the plan, but Stewplan reduces concern over whether all necessary elements have been included.

Installing Stewplan

Stewplan includes an installer program that makes it easy for you to install the software onto your hard drive. Please read the following information before installing the software.

Minimum system requirements

Stewplan runs on the following minimum system configuration:

- Any IBM-compatible 80486 computer or higher, running Microsoft Windows 95 or higher.
- A hard disk with at least 5 megabytes of free space.
- A CD-ROM drive (necessary to install Stewplan from CD).
- Any monitor that works with Microsoft Windows (800 x 600 or better is recommended).

Installation

These instructions pertain to installation from a CD. Stewplan is also available on the web, at www.fs.fed.us/ne/burlington/ned.

Insert the Stewplan CD in your CD-ROM drive. If you have autoplay on your CD-ROM, the drive will read the CD and automatically launch the setup program for you. If the setup program does not launch automatically, follow these instructions:

From the Start menu, select 'Run'. Then type 'D:\InstallStewplan.exe'. (If your CD-ROM is not drive letter 'D', then substitute your CD-ROM drive letter.) As an alternative, open Windows Explorer, browse your CD-ROM drive, and double click the 'InstallStewplan.exe' icon.

If you have installed other NED products previously, the shortcut to Stewplan will be found with other NED programs, under Start → Programs → NED Programs.

Getting Started

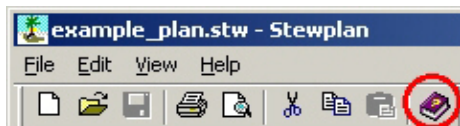
To start Stewplan, click the 'Start' button, then click 'Programs'. Click 'NED programs' and then click on 'Stewplan'.

If you are unfamiliar with some of the plan items, a quick way to learn is to view one of the example stewardship plans included with the software. To view one of these plans, open a file such as 'example_plan.stw' using either the 'File>Open' menu selection or the 'File Open' Toolbar button.

Finding Help

Stewplan provides online help that can be accessed by clicking on 'Help' from the top-level menu. An index and a table of contents provide links to information.

If you place the cursor on any item in Stewplan, you can access instant help by clicking on the book icon on the toolbar.



For additional assistance, you may contact us at (802) 951-6771 or by sending email to nedsoftware@fs.fed.us.

Entering Data

Screens and Tabs

Stewplan data are entered directly into fields on the forms within the program. You can switch among the sets of forms using the index card-like tabs at the top of each screen. The example on this page shows the 'Directions/Access' screen. Note that some fields on each screen are required by the Stewardship Program; these fields are identified with an asterisk. All tabs have at least some information required for participation in the standard Stewardship Program.

Stewardship - Stewplan

File Edit View Help

Names: Directions/Access | Property Description | Description | Scale | Maps | Plan |

DIRECTIONS AND ACCESS TO THE PROPERTY

Directions to property
* This property is located in the northeastern corner of Large County, approximately six miles from the town of Tipton, along the north (northwest) corner of T12465. This property is owned by the owner through a collection of parcels and is not a single parcel.

Legal Description

Property Code
12465

Management Issues
* This property is located in the northeastern corner of Large County, approximately six miles from the town of Tipton, along the north (northwest) corner of T12465. This property is owned by the owner through a collection of parcels and is not a single parcel. This area is unimproved and will require the construction of a road and other improvements.

MAP INFO

Type of map:
 Topographic map
 Aerial photo
 Satellite map
 ES map
 Other

Items on the map:
 North arrow (required)
 Map logo (required)
 Map scale (required)
 Locate map
 Third browser

Help with this map info

NO map of property included with plan?

* Items with an asterisk are required under State and Federal Stewardship Plan Guidelines.

Enter directions to the property, include management areas

Cutting and Pasting

If you already have descriptions of the property that belong in any of the fields in Stewplan, you may use standard cutting and pasting techniques within Windows to transfer text from other programs into the appropriate sections.

The 'Stands' tab is the section of the program in which most of the detailed data must be entered. Clicking on the 'Add' button in the upper right section of the window, or double-clicking on an existing line of summary stand data, will bring onto the screen a form with additional tabs and forms, in which all the specific inventory statistics, goals, and prescriptions must be entered. Each stand on the property will have its own set of data.

Example plantation - Stands

File Edit View Help

Name | Inventory/Access | Property Description | Characteristics | Goals | Stands | Plans

Enter site information for this species

Add Details Help

Description of forest stand:

Stand ID#	Name	Area	Forest Type	Size Class
Stand 1	sugar maple	35.8	sugar maple	Forest (5.5 - 11.5")
Stand 2	red pine plantation	17.8	red pine plantation	Forest (3.3 - 11.2")
Stand 3	red pine - Primary spruce plantation	18.8	red pine - Primary spruce plantation	Forest (3.3 - 11.2")
Stand 4	red spruce - sugar maple	13.8	red spruce - sugar maple	Forest (5.5 - 11.5")
Stand 5	sugar maple	32.8	sugar maple	Forest (11.3 - 17.2")
Stand 6	24 and 2 and 2 Properties			
Stand 7	K			

Stands with an asterisk are required

Enter stand description

Identification | Data | Statistics | Potential Uses | Features and Issues | Eminent Conditions | Prescriptions

Stand Name:

Area:

Forest Type:

Potential Forest Type:

Size Class:

Age:

Description:

Stands with an asterisk are required to meet State and Federal Lumbering Plan Guidelines

OK Cancel Help

Developing Plans

Stewplan incorporates a graphical depiction of the plan developed for each property. Clicking on the 'Plan' tab brings up a screen in which you can define the years the plan will cover. For each year you can identify activities planned for each stand, as needed. Double clicking on the cell representing a particular stand in a particular year will bring up a window in which you can select the icon for the type of treatment or activity, give a priority rating to the activity, and then describe in detail what you are planning. These details are all reproduced in a standard format in the program output.

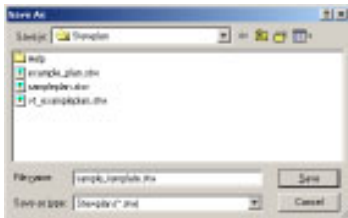
The screenshot displays the Stewplan software interface. The main window is titled "Stewplan - Management Plan" and shows a grid for planning activities across seven stands (Stand 1 to Stand 7) from 2002 to 2008. The grid contains various icons representing different activities. A dialog box titled "Select an activity" is open, showing a list of activity options with corresponding icons. The options are:

- Site Preparation
- Planting or seeding
- Waterfowl Habitat creation
- Multiple Treatment in Same Stand
- Fire fuel cutting
- Single Tree or Group Selection
- Thinning
- Pruning
- Overgrown Regeneration Cutting
- Food Waste
- Wildlife Habitat Improvement

The dialog also includes a text area for "Describe the activity" and a "Priority" field with a dropdown menu. A note at the bottom right of the dialog states: "Enter a number from 1 through 15. Lower numbers have higher priority."

Saving Customized Files

Frequently, people who develop stewardship plans do so for many different properties. Often, much of the information, such as the name and address of the plan preparer, does not change from plan to plan. One approach to simplify the generation of new plans, especially if many plans are expected to include much of the same information, is to generate a template of sorts by entering only the common data into a blank plan file, then opening a copy of the file each time one starts to create a plan for a new property. Multiple variations can be saved, for example, if a consultant works in several different states and wants one template for each set of state regulations.



Working with other Software

Stewplan addresses many of the same topics as the Forest Stewardship Planning Guide, NEWild, and NED-1. However, this version (1.3) of Stewplan does not facilitate transfer of data between the programs. For example, if you were to develop goals using the Planning Guide, or to complete an inventory using NED-1, you would need to transcribe the summary data or goals to Stewplan version 1.3 by hand. Future versions of Stewplan will include a mechanism to import data from other programs within the NED suite of tools.

Output

All plans generated from Stewplan will have a similar appearance and follow a specific format to provide consistency among users. Stewplan also indicates which items are required in order to meet state and federal stewardship plan guidelines.

There are some features of the output that you don't see while developing your plan. For instance, the output contains the name of the landowner at the top of each page and the preparation date and page number at the bottom. Stewplan's output resembles paper forms. Just like paper forms, if you skip an item it remains on the form (with empty spaces to the right). For example, if you do not enter any comments on the landowner goals, the field "Goal Comments:" will still appear on the output with blank spaces.

Print Preview

You can preview your Stewplan output document before printing. To display each page as it will look when printed, click 'Print Preview' on the toolbar or under the 'File' menu.

Exporting to Other Formats

If you have special formatting needs, you can output your plan for use in another program, such as Word or WordPerfect. Open the plan you want to export. On the 'File' menu, click 'Save As'. In the 'Save as type' box are three choices. Choose '.txt' for a plain text file that is compatible with other word-processing programs. Choose '.htm' to save a copy in HTML, which retains the formatting and can be opened by word processing programs. When you click 'Save', Stewplan will export your plan to a file with the appropriate extension.

Printers

Stewplan can be used with any printer that works with Microsoft Windows.

The Authors

Peter D. Knopp is an information technology specialist with the Northeastern Research Station of the USDA Forest Service. He is stationed in Delaware, OH, and works with the research unit Integrating Social and Biophysical Sciences for Natural Resource Management, located in Burlington, VT.

Mark J. Twery is a supervisory research forester with the Northeastern Research Station of the USDA Forest Service, and Project Leader of the work unit Integrating Social and Biophysical Sciences for Natural Resource Management, located in Burlington, VT.

Acknowledgments

We thank many people who played important roles in helping to define the purpose and content of this software, and in developing earlier prototypes, especially Scott Thomasma, Jeff Palmer, Lloyd Casey, Mark Buccowich, Roger Monthey, Bill Moulton, Ross Morgan, and Neil Lamson. Cover photograph: large northern red oak and hackberry in the Olentangy River floodplain, Delaware, Ohio. Photo by Peter Knopp.

The U. S. Department of Agriculture (USDA) prohibits discrimination in all its programs and activities on the basis of race, color, national origin, gender, religion, age, disability, political beliefs, sexual orientation, and marital or family status. (Not all prohibited bases apply to all programs.) Persons with disabilities who require alternative means for communication of program information (Braille, large print, audiotape, etc.) should contact the USDA's TARGET Center at (202)720-2600 (voice and TDD).

To file a complaint of discrimination, write USDA, Director, Office of Civil Rights, Room 326-W, Whitten Building, 14th and Independence Avenue SW, Washington, DC 20250-9410, or call (202)720-5964 (voice and TDD). USDA is an equal opportunity provider and employer.

Copyright

Stewplan was developed by the USDA Forest Service, Northeastern Research Station, and is provided free of charge. All content is in the public domain.

Copies may be obtained from the USDA Forest Service, Northeastern Research Station, P.O. Box 968, Burlington, VT 05402-0968, 802-951-6771.

Every effort is made to provide accurate and useful information. However, the U.S. Department of Agriculture, the Forest Service, and their employees and contractors assume no legal liability for the accuracy, completeness, or usefulness of any information, apparatus, product, or process disclosed herein. Neither the U.S. Department of Agriculture, the Forest Service, nor their employees and contractors makes any warranty, express or implied, including the warranties of merchantability and fitness for a particular purpose with respect to Stewplan software or documentation.

The use of trade, firm, or corporation names in Stewplan or in this publication and linked publications is for the information and convenience of the reader. Such use does not constitute an official endorsement or approval by the U.S. Department of Agriculture of any product or service to the exclusion of others that may be suitable.

Published by:
USDA FOREST SERVICE
11 CAMPUS BLVD SUITE 200
NEWTOWN SQUARE PA 19073-3294

March 2003

For additional copies:
USDA Forest Service
Publications Distribution
359 Main Road
Delaware, OH 43015-8640
Fax: (740)368-0152

Visit our homepage at: <http://www.fs.fed.us/ne/burlington/ned>.

Knopp, Peter D.; Twery, Mark J. 2003. **Stewplan: software for creating forest stewardship plans (Version 1.3)** [Computer program]. Gen. Tech. Rep. NE-301. Newtown Square, PA: U.S. Department of Agriculture, Forest Service, Northeastern Research Station. 12 p. [User's manual; CD-ROM].

Describes the purpose and function of the Stewplan computer program. Provides instructions for loading Stewplan, a tutorial for getting started, and instructions for use. A copy of the program is included.

“Caring for the Land and Serving People Through Research”