

Number of Sales, Volume, Value & Price Per MBF of Convertible Timber Cut & Sold  
FOREST SERVICE WIDE

FISCAL Year	NUMBER of Sales	TIMBER SOLD			TIMBER HARVESTED			Comments
		VOLUME MBF	VALUE Dollars	PRICE Per MBF	VOLUME MBF	VALUE Dollars	PRICE Per MBF	
1905					68,475	\$85,597	\$1.25	
1906					138,665	\$203,333	\$1.47	
1907					194,872	\$337,952	\$1.73	
1908					392,792	\$794,252	\$2.02	
1909					352,434	\$677,784	\$1.92	
1910					379,616	\$906,308	\$2.39	
1911					374,678	\$842,993	\$2.25	
1912					431,492	\$942,819	\$2.19	
1913					495,668	\$1,075,185	\$2.17	
1914					626,306	\$1,271,060	\$2.03	
1915					565,754	\$1,179,449	\$2.08	
1916					594,767	\$1,254,562	\$2.11	
1917					736,430	\$1,533,349	\$2.08	
1918					730,179	\$1,526,981	\$2.09	
1919					705,399	\$1,514,567	\$2.15	
1920					805,375	\$1,763,927	\$2.19	
1921					800,452	\$1,896,047	\$2.37	
1922					722,779	\$1,752,424	\$2.42	
1923					994,605	\$2,570,300	\$2.58	
1924					1,143,654	\$3,094,738	\$2.71	
1925					1,021,879	\$2,808,005	\$2.75	
1926					1,192,517	\$3,370,616	\$2.83	
1927					1,360,242	\$3,846,441	\$2.83	
1928					1,271,562	\$3,507,999	\$2.76	
1929					1,496,725	\$4,328,395	\$2.89	
1930					1,653,265	\$4,789,803	\$2.90	
1931					1,222,361	\$3,347,969	\$2.74	Depression
1932					611,751	\$1,519,141	\$2.48	
1933					473,922	\$1,077,185	\$2.27	
1934					674,542	\$1,609,288	\$2.39	
1935					752,368	\$1,938,057	\$2.58	
1936					1,021,156	\$2,589,731	\$2.54	
1937					1,290,623	\$3,188,672	\$2.47	
1938					1,287,917	\$3,208,507	\$2.49	
1939					1,290,561	\$2,275,284	\$2.62	
1940		1,779,209	\$4,671,541	\$2.63	1,740,271	\$4,806,729	\$2.76	
1941		1,464,523	\$4,769,348	\$3.26	2,067,279	\$5,761,819	\$2.79	
1942		2,839,416	\$8,195,727	\$2.89	2,204,749	\$6,109,097	\$2.77	
1943		3,693,048	\$16,171,529	\$4.38	2,359,473	\$8,671,729	\$3.68	
1944		2,858,465	\$12,121,348	\$4.24	3,333,167	\$14,154,983	\$4.25	
1945		2,391,449	\$10,465,748	\$4.38	3,144,789	\$13,016,232	\$4.14	
1946		2,687,018	\$10,626,293	\$3.95	2,729,708	\$11,490,318	\$4.21	
1947		3,786,231	\$21,954,920	\$5.80	3,834,588	\$16,399,890	\$4.28	
1948		3,741,856	\$30,275,736	\$8.09	3,758,885	\$21,054,111	\$5.60	
1949		2,614,701	\$29,122,287	\$11.14	3,740,810	\$28,749,007	\$7.69	
1950	24,248	3,434,114	\$20,329,017	\$5.92	3,501,568	\$29,111,440	\$8.31	
1951	22,399	4,912,958	\$60,482,569	\$12.31	4,688,280	\$46,752,531	\$9.97	
1952	21,148	4,731,337	\$80,002,439	\$16.91	4,806,230	\$58,256,920	\$12.12	
1953	22,020	4,714,321	\$56,928,928	\$12.08	5,359,919	\$69,709,032	\$13.01	
1954	21,044	6,432,421	\$59,860,296	\$9.31	5,853,807	\$64,148,673	\$10.96	
1955	23,402	10,068,058	\$94,062,121	\$9.34	6,577,535	\$70,104,927	\$10.66	Ketchikan Pulp Co. Sale, Alaska
1956	21,842	6,837,262	\$135,550,245	\$19.83	6,898,043	\$96,864,795	\$14.04	
1957	21,687	6,533,375	\$111,247,544	\$17.03	6,998,185	\$115,092,649	\$16.45	
1958	22,495	13,292,643	\$103,330,896	\$7.77	6,420,701	\$93,807,167	\$14.61	Alaska Pulp Corp. Sale
1959	24,277	9,359,065	\$129,424,837	\$13.83	8,340,518	\$113,509,134	\$13.61	
1960	23,852	12,167,180	\$170,892,642	\$14.05	9,366,897	\$156,423,791	\$16.70	3 BBF sale in R3
1961	24,779	8,856,904	\$125,145,413	\$14.13	8,380,689	\$123,893,902	\$14.78	
1962	23,030	10,325,872	\$133,660,089	\$12.94	9,032,237	\$128,514,023	\$14.23	
1963	27,020	12,175,253	\$158,567,600	\$13.02	10,026,242	\$134,147,839	\$13.38	
1964	26,976	11,681,508	\$171,895,104	\$14.72	10,954,193	\$150,711,558	\$13.76	
1965	25,706	11,510,150	\$199,134,903	\$17.30	11,243,725	\$160,759,474	\$14.30	
1966	23,923	11,294,440	\$222,403,062	\$19.69	12,138,401	\$195,590,802	\$16.11	
1967	23,266	11,640,532	\$209,673,441	\$18.01	10,759,041	\$188,711,969	\$17.54	
1968	22,479	11,683,952	\$274,253,980	\$23.47	12,128,225	\$239,341,589	\$19.73	
1969	23,418	19,482,529	\$502,140,808	\$25.77	11,863,473	\$326,996,862	\$27.56	8 BBF Sale in Alaska, later cancelled
1970	26,610	13,382,026	\$317,302,594	\$23.71	11,526,725	\$307,609,817	\$26.69	
1971	23,243	10,636,387	\$215,299,552	\$20.24	10,341,204	\$257,020,185	\$24.85	
1972	25,419	10,339,486	\$328,446,311	\$31.77	11,700,364	\$381,956,590	\$32.64	
1973	28,851	10,199,250	\$636,151,669	\$62.37	12,357,023	\$479,233,003	\$38.78	
1974	34,429	10,241,085	\$902,608,483	\$88.14	10,958,393	\$508,615,356	\$46.41	
1975	35,977	10,823,549	\$657,185,830	\$60.72	9,173,785	\$365,951,687	\$39.89	Economic recession
1976	43,012	10,287,270	\$707,832,690	\$68.81	9,575,455	\$492,029,190	\$51.38	
1976 TQ	N.A.	1,535,301	\$94,005,949	\$61.23	3,431,964	\$209,937,583	\$61.17	Transition Quarter: FY 1976 ended 6/30/76 and FY 1977 began 10/1/76
1977	44,466	9,919,695	\$987,416,476	\$99.54	10,481,536	\$732,556,790	\$69.89	
1978	54,373	10,995,851	\$1,328,415,687	\$120.81	10,079,524	\$854,682,200	\$84.79	
1979	64,135	11,330,376	\$1,962,624,421	\$173.22	10,376,955	\$967,923,445	\$93.28	
1980	89,337	11,290,029	\$1,948,657,998	\$172.60	9,178,209	\$729,829,429	\$79.52	Began limiting sale contracts to 3 years
1981	92,041	11,456,802	\$1,767,749,387	\$154.30	8,036,240	\$714,922,395	\$88.96	
1982	143,723	10,029,636	\$614,187,924	\$61.24	6,747,260	\$339,214,989	\$50.27	Economic recession; eliminated free use
1983	235,585	11,061,397	\$775,170,480	\$70.08	9,244,037	\$649,622,237	\$70.27	
1984	343,006	10,661,697	\$698,718,203	\$65.54	10,548,687	\$759,577,198	\$72.01	
1985	366,874	10,818,990	\$558,132,137	\$51.59	10,941,266	\$720,636,166	\$65.86	
1986	349,977	10,966,577	\$757,022,983	\$69.03	11,786,490	\$786,881,222	\$66.76	
1987	289,043	11,318,987	\$1,003,389,792	\$88.65	12,712,103	\$1,015,995,028	\$79.92	
1988	251,557	10,968,233	\$1,254,387,610	\$114.37	12,596,361	\$1,235,734,207	\$98.10	
1989	275,895	8,414,587	\$1,077,534,474	\$128.06	11,950,937	\$1,316,841,207	\$110.19	
1990	262,781	9,229,693	\$1,609,925,538	\$174.43	10,500,278	\$1,187,384,520	\$113.08	
1991	271,963	5,786,287	\$686,645,684	\$118.67	6,558,889	\$845,694,147	\$128.94	
1992	250,852	4,458,452	\$575,921,207	\$129.18	7,289,632	\$934,504,178	\$128.20	
1993	255,825	4,515,324	\$774,887,925	\$171.61	5,916,937	\$914,646,052	\$154.58	
1994	215,268	3,056,348	\$508,903,659	\$166.51	4,815,329	\$783,038,256	\$162.61	
1995	216,272	2,885,262	\$369,736,307	\$128.15	3,865,913	\$616,117,347	\$159.37	Rescissions Act supports salvage - 1995-1997
1996	190,123	3,384,448	\$450,452,674	\$133.09	3,724,552	\$544,349,011	\$146.15	
1997	198,110	3,687,683	\$494,025,135	\$133.97	3,285,294	\$497,956,596	\$151.57	
1998	165,697	2,955,292	\$365,554,063	\$123.69	3,297,834	\$445,773,656	\$135.17	

**Number of Sales, Volume, Value & Price Per MBF of Convertible Timber Cut & Sold  
FOREST SERVICE WIDE**

FISCAL Year	NUMBER of Sales	TIMBER SOLD			TIMBER HARVESTED			Comments
		VOLUME MBF	VALUE Dollars	PRICE Per MBF	VOLUME MBF	VALUE Dollars	PRICE Per MBF	
1999	155,888	2,200,407	\$224,160,027	\$101.87	2,938,571	\$339,470,621	\$115.52	
2000	114,351	1,744,502	\$187,551,212	\$107.51	2,542,427	\$302,933,984	\$119.15	
2001	133,919	1,534,115	\$140,813,639	\$91.79	1,938,198	\$177,633,842	\$91.65	
2002	130,248	1,620,954	\$149,696,581	\$92.44	1,727,556	\$164,050,835	\$95.04	
2003	121,689	1,637,633	\$141,212,915	\$86.23	1,817,751	\$157,323,242	\$86.55	
2004	120,203	2,163,943	\$196,234,804	\$90.68	2,031,607	\$217,534,158	\$107.07	
2005	116,957	2,399,540	\$248,194,085	\$103.43	2,097,611	\$224,142,724	\$106.86	
2006 <sup>2</sup>	131,536	2,835,056	\$249,379,873	\$87.96	2,296,491	\$221,390,371	\$96.40	Began reporting timber volume awarded
2007	131,856	2,499,327	\$197,455,406	\$79.00	1,960,363	\$166,641,434	\$85.01	
2008	162,090	2,379,597	\$156,787,741	\$65.89	2,048,928	\$138,119,022	\$67.41	Financial collapse; recession
2009	178,188	2,507,672	\$103,362,812	\$41.22	1,954,052	\$94,963,141	\$48.60	Continued recession
2010	184,953	2,597,108	\$136,371,886	\$52.51	2,137,859	\$104,809,312	\$49.03	
2011	183,368	2,536,704	\$152,008,206	\$59.92	2,440,432	\$129,301,131	\$52.98	
2012	171,500	2,644,223	\$155,076,706	\$58.65	2,500,321	\$137,680,446	\$55.07	

Price per MBF = total value divided by total volume.

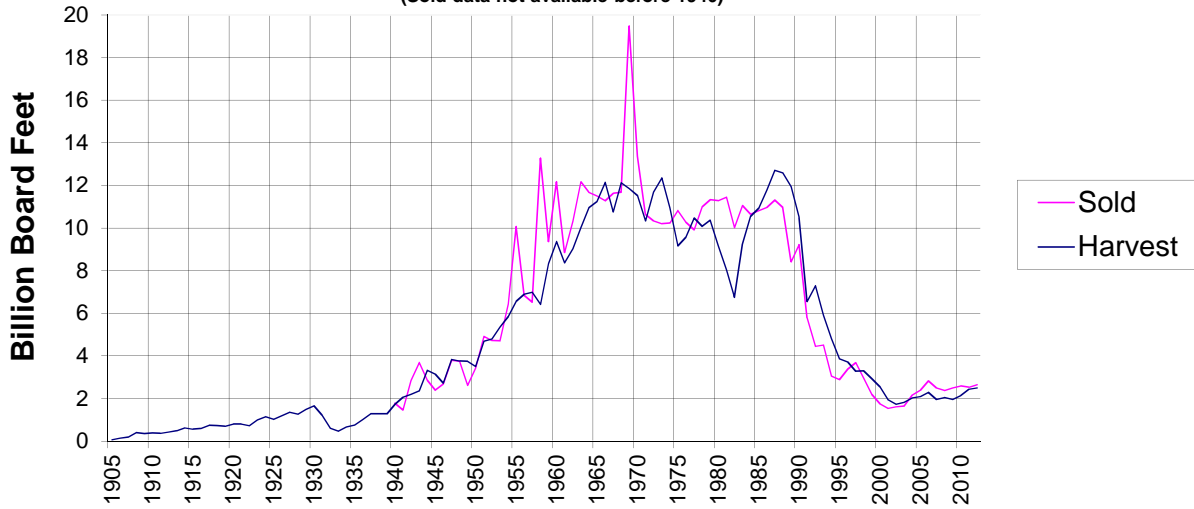
N.A. = Not available

<sup>1</sup> Data derived from Cut and Sold Reports

<sup>2</sup> Note: Starting in FY 2006, the final official timber sold data are greater than the data obtained from the Timber Sale Accounting System (TSA), because the official timber sold volumes shown here include add-on volume and all stewardship contracting volume, which is not entered into TSA.

# TIMBER SOLD AND HARVESTED 1905-2012

National Forest System  
(Sold data not available before 1940)



# TIMBER SOLD AND HARVESTED 2000-2010 National Forest System

