



EXERCISE 1: DOWNLOAD AND INSTALL THE FUSION PROGRAM AND EXAMPLE DATA



Document Updated: May 2010
FUSION v2.80



The default destination folder for the Fusion program is C:\Fusion\. We recommend keeping it there because the path name is short and you will be typing that path often in subsequent exercises.



There are a number of advantages to using the suggested path (C:\lidar\SampleData\) to store the Example Data including: that is how we will refer to the data location for these tutorials.

Prerequisites

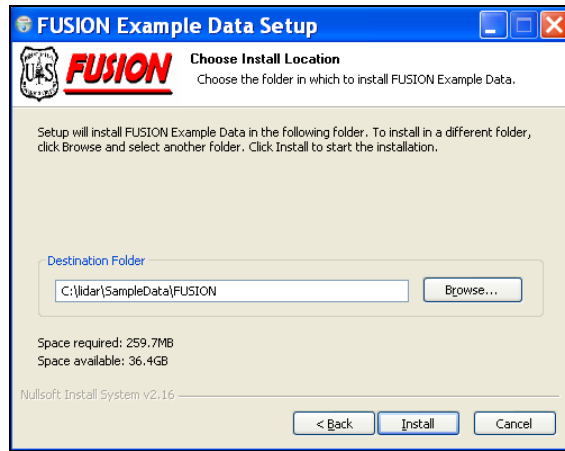
- A connection to the internet
- At least 500 megabytes of available disk space

Procedure

1. *Open* a browser and connect to: <http://forsys.cfr.washington.edu/fusion/fusionlatest.html> to open "The Latest Version" Fusion webpage.
2. *Click* the **Install File** hyperlink to open the **File Download** dialog for Fusion_Install.exe.
3. *Click* the **Save** button to open the **Save As** dialog.
4. Navigate to a location of your choosing (one that you will remember) and/or create a new folder and *Click Save*. The file (**Fusion_Install.exe**) will download.
5. When the download is complete, *Open (or Run)* **Fusion_Install.exe**. The first screen of the **Fusion Setup** dialog will display.
 6. Keep the default installation **Components** and *Click Next >*.
 7. Keep the default **Install Location** (see sidebar) and *Click Next >*.
 8. And, keep the defaults for the **Start Menu Folder** and *Click Install*.
 9. After the installation completes, *Click Close*.
10. Now we need to download the example data. On the FUSION webpage you will notice there are two options of example data to choose from. We will choose the "**State Plane, WA south zone (124 Mb)**" as the example data to use in this portion of the course.
11. Within the FUSION web page, *Click* the "**Example data (State Plane, WA south zone) (124 Mb)**" hyperlink to open the **File Download** dialog for Fusion_ExampleData.exe .
12. *Click* the **Save** button and save the file in the same location as the Fusion_Install file.
13. When the download is complete, *Open (or Run)* **Fusion_ExampleData.exe**. This will open the **Fusion Example Data Setup** wizard, see figure on next page...
 14. Screen 1: keep the default for installing all the data (both components).
 15. Screen 2: do NOT accept the default destination. *Click* the **Browse...** button to open the **Browse for Folder** dialog:



EXERCISE 1: DOWNLOAD AND INSTALL THE FUSION PROGRAM AND EXAMPLE DATA



The Destination Folder dialog box is depicted above showing the suggested path (C:\lidar\SampleData\) with the additional FUSION folder added by the wizard by default. However, the fusion data installation program will put the data in: c:\lidar\SampleData\FUSION\Example
We recommend that you move the data back up to: **c:\lidar\SampleData**.

16. Navigate to the root of the C: drive **C:** and click the **Make New Folder...** button.
17. Name the new folder **lidar**.
18. Select the new **C:\lidar** folder and *Click* the **Make New Folder...** button again.
19. Name this folder **SampleData**.
20. *Click* **OK** to close the **Browse for Folder** dialog and return to the wizard Destination screen.
You will now see that a folder named "FUSION" has been added to your designated path, leave the folder for now.
20. *Click* the **Install** button.
21. Once the installation finishes successfully, *Click* the **Close** button.
22. Start Windows Explorer and navigate to **C:\lidar\SampleData**. You'll notice there is no data in this folder—two new sub-folders called **FUSION\Example** were automatically created that holds all of the example data. This is not what we expected so, for consistency...
23. Open the **Example** folder and move all of the data up to the 2nd parent folder **SampleData**.
24. Delete the **FUSION** and **Example** folders. Note: you can install the data anywhere you wish (or copy and move this data to a different location). However, for the subsequent exercises, we'll assume that the data is in **C:\lidar\SampleData**.
25. In Windows Explorer navigate to **C:\FUSION\doc\FUSION_manual.pdf**. Please take a moment to briefly review the manual. The manual will be an essential resource as you start working with FUSION command line executables in subsequent exercises!