

PROJECT DESIGN CRITERIA:

THIS BRIDGE SHALL BE CONSTRUCTED IN ACCORDANCE WITH THE FOLLOWING CRITERIA: OPTIONS TO BE SELECTED ARE BRACKETED []

- PEDESTRIAN LIVE LOAD = _____ PSF
 - GROUND SNOW LOAD = _____ PSF (WITH NO MODIFICATION FACTORS)
 - SPAN LENGTH = '- " (☐ BEARING-TO-☐ BEARING)
 - TREAD WIDTH = '- " (SEE TYPICAL SECTION)
 - PEELED LOG DIAMETER* = " MID SPAN DIAMETER
- *REFER TO TABLE 2 AND COMPARE STRINGER SIZE REQUIREMENTS FOR BOTH PEDESTRIAN AND SNOW LOADING. IN THE SPACE ABOVE, ENTER THE LARGER STRINGER DIAMETER THAT SATISFIES THE TWO LOAD CASES.
- BRIDGE RAIL = [NATIVE POLES/SAWN TIMBER/NONE]
 - STEEL HARDWARE = [UNCOATED/GALVANIZED/WEATHERING STEEL]
- TREATMENT – SEE GENERAL NOTES FOR SPECIFICATIONS
- STRINGER = [NONE/PENTACHLOROPHENOL/COPPER NAPHTHENATE]
 - SILLS & DECK PLANKS = [NONE/PENTACHLOROPHENOL/COPPER NAPHTHENATE]
 - BACKING PLANKS = [NONE/PENTACHLOROPHENOL/COPPER NAPHTHENATE]
 - BRIDGE RAILING & POSTS = [NATIVE/REDWOOD/WESTERN RED CEDAR]
- UNTREATED = [NATIVE/REDWOOD/WESTERN RED CEDAR]
 - TREATED = [PENTACHLOROPHENOL/COPPER NAPHTHENATE/ OXINE COPPER/ACZA/ACQ]
- ALL STEEL IN CONTACT W/ ACQ MUST BE GALVANIZED



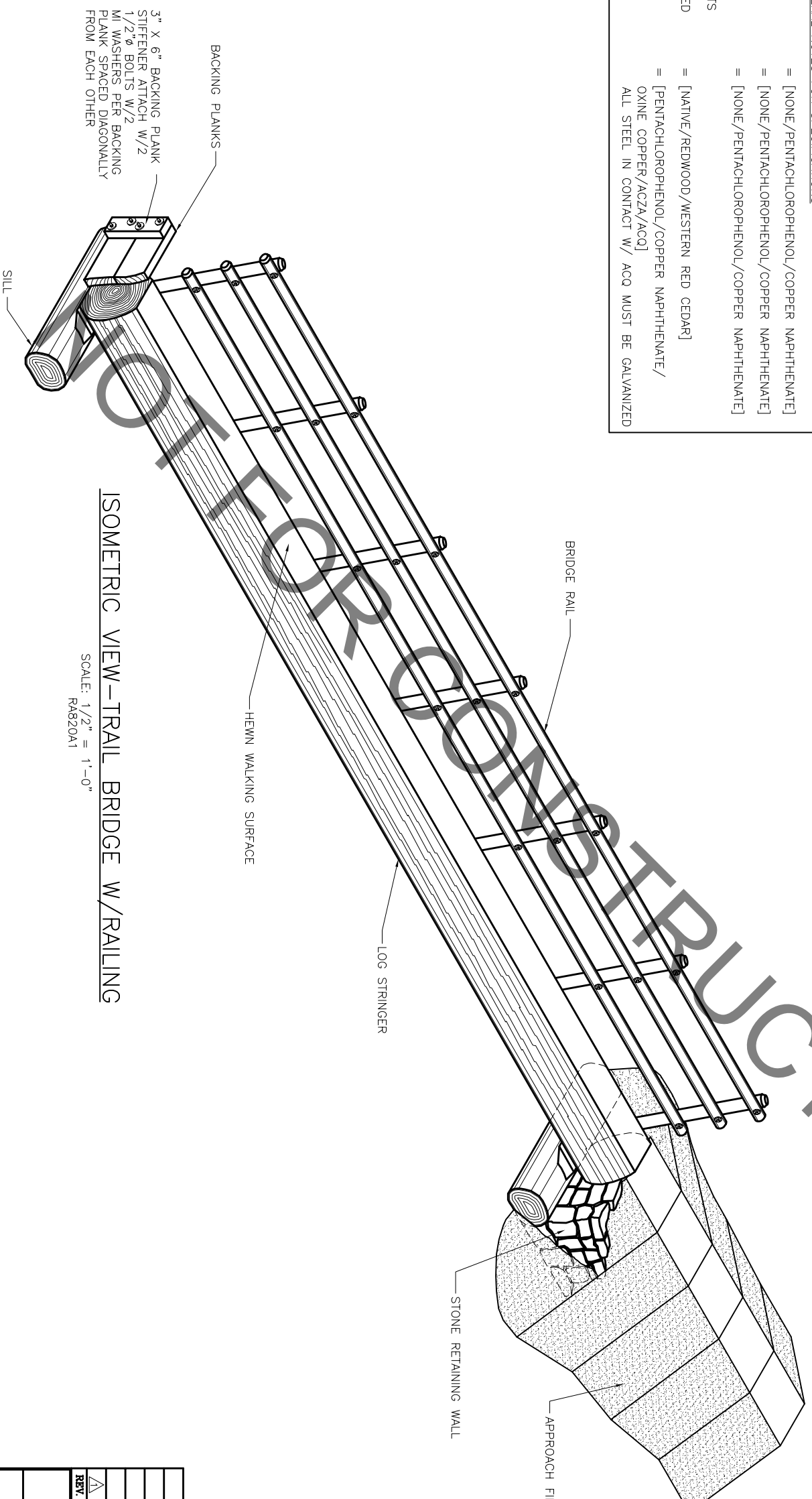
U.S. DEPARTMENT OF AGRICULTURE
FOREST SERVICE



STANDARD PLANS

FOR

SINGLE LOG STRINGER TRAIL BRIDGE
[PROJECT NAME & BRIDGE NUMBER]



ISOMETRIC VIEW—TRAIL BRIDGE W/RAILING

SCALE: 1/2" = 1'-0"
RA820A1

Dwg. of

DO NOT SCALE—
REDUCED—
DRAWING

REV.	DESCRIPTION	APPROVED	DATE
Δ	REVISED TO R-6 STRUCTURES AND STANDARDS		3/24/05
U.S. DEPARTMENT OF AGRICULTURE FOREST SERVICE THE PACIFIC NORTHWEST REGION (R-6)			

SINGLE LOG STRINGER
10 FT – 45 FT LONG
TRAIL BRIDGE

Forest: _____
Bridge No.: _____
Location: _____

Loading:
Length: _____
Width: _____

SHEET 1 of 4 DESIGN AID RA820

APPROVED:

DATE _____

FOREST ENGINEER

DWG NO. _____