

PROJECT DESIGN CRITERIA:

THIS BRIDGE SHALL BE CONSTRUCTED IN ACCORDANCE WITH THE FOLLOWING CRITERIA: OPTIONS TO BE SELECTED ARE BRACKETED [].

PEDESTRIAN LIVE LOAD = _____ PSF

GROUND SNOW LOAD = _____ PSF (WITH NO MODIFICATION FACTORS)

SPAN LENGTH = ' - ' " (Ø BEARING-TO-Ø BEARING)

CLEAR WIDTH = ' - ' " (SEE TYPICAL SECTION)

STRINGERS:

NUMBER REQUIRED = --
 *NOMINAL DIMENSIONS = -- WIDTH x -- DEPTH, (INCHES)

*REFER TO TABLE 1 AND COMPARE STRINGER SIZE REQUIREMENTS FOR BOTH PEDESTRIAN AND SNOW LOADING. IN THE SPACE ABOVE, ENTER THE DIMENSION OF THE LARGER STRINGER THAT SATISFIES THE TWO LOAD CASES.

RUNNING PLANKS = [YES/NO], [TREATED/UNTREATED]

CURBS/BRIDGE RAIL = [CURBS ONLY OR BRIDGE RAIL]

STEEL HARDWARE = [UNCOATED/GALVANIZED/WEATHERING STEEL]

TREATMENT - SEE GENERAL NOTES FOR SPECIFICATIONS

STRINGERS, DECK PLANKS, RUNNING PLANKS (IF REQ'D), SILLS, AND BACKING PLANKS = [PENTACHLOROPHENOL/COPPER NAPHTHENATE]

TIMBER CURB ELEMENTS = [PENTACHLOROPHENOL/COPPER NAPHTHENATE]

BRIDGE RAILING & POSTS = [REDWOOD/WESTERN RED CEDAR]

UNTREATED = [REDWOOD/WESTERN RED CEDAR]

TREATED = [PENTACHLOROPHENOL/COPPER NAPHTHENATE/
 OXINE COPPER/ACZA/ACQ]

ALL STEEL IN CONTACT W/ ACQ MUST BE GALVANIZED

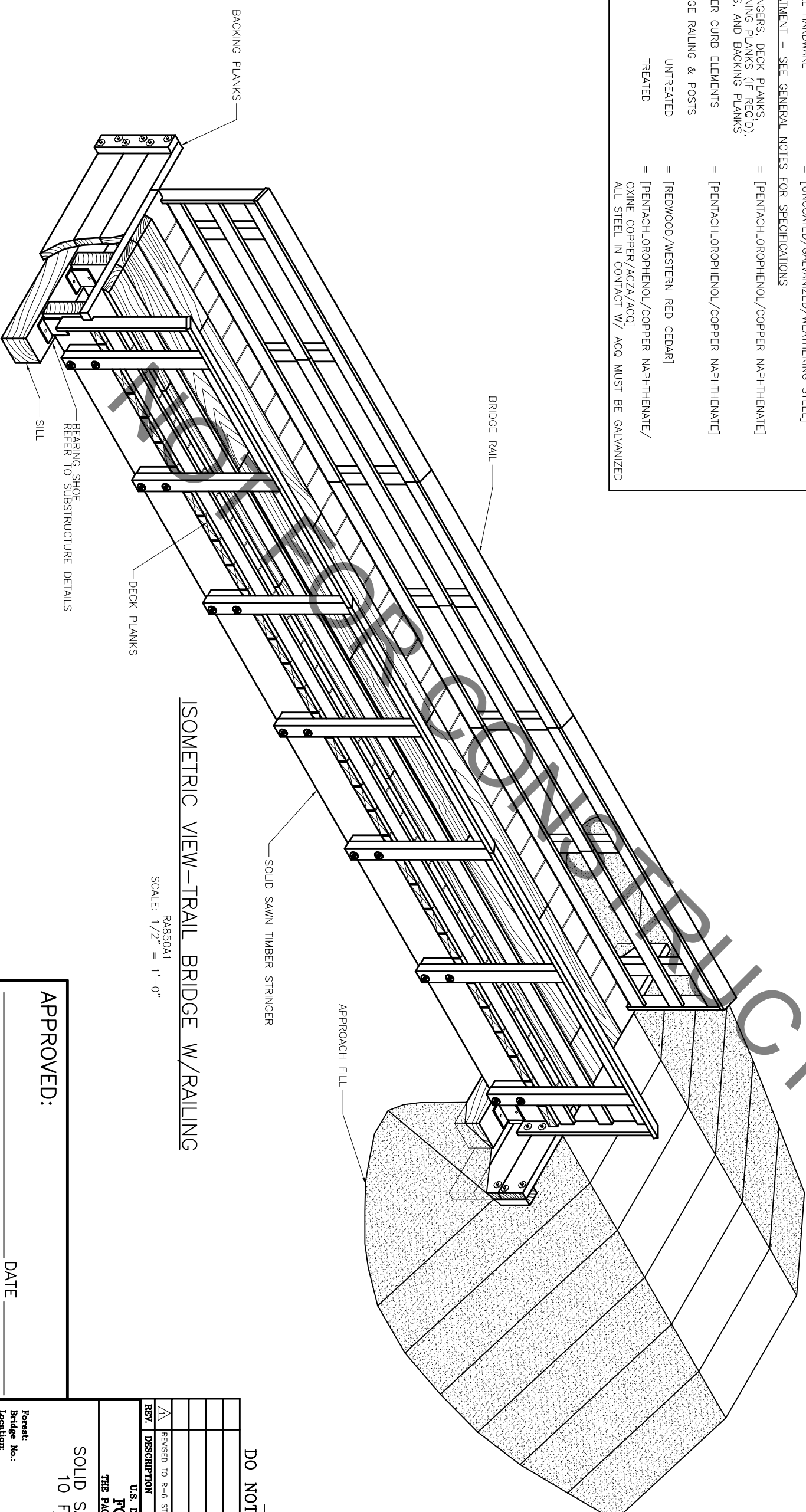


U.S. DEPARTMENT OF AGRICULTURE
 FOREST SERVICE



STANDARD PLANS
 FOR

SOLID SAWN TIMBER STRINGER TRAIL BRIDGE
 [PROJECT NAME & BRIDGE NUMBER]



RA850A1
 SCALE: 1/2" = 1'-0"

DO NOT SCALE-
 REDUCED-
 DRAWING

REV.	DESCRIPTION	APPROVED	DATE
Δ	REVISED TO R-6 STRUCTURES CAD STANDARDS	MOE	3/24/05

U.S. DEPARTMENT OF AGRICULTURE
FOREST SERVICE
 THE PACIFIC NORTHWEST REGION (R-6)

SOLID SAWN TIMBER STRINGER
 10 FT - 40 FT LONG
 TRAIL BRIDGE

Forest: _____
 Bridge No.: _____
 Location: _____

Loading: _____
 Length: _____
 Width: _____

SHEET 1 of 4 DESIGN AID RA850

APPROVED:

FOREST ENGINEER

DATE _____

DWG NO. _____