

PROJECT DESIGN CRITERIA:

THIS BRIDGE SHALL BE CONSTRUCTED IN ACCORDANCE WITH THE FOLLOWING CRITERIA: OPTIONS TO BE SELECTED ARE BRACKETED [].

PEDESTRIAN LIVE LOAD = [] PSF

GROUND SNOW LOAD = [] PSF (WITH NO MODIFICATION FACTORS)

SPAN LENGTH = []' - []" (∅ BEARING-TO-∅ BEARING)

CLEAR WIDTH = []' - []" (SEE TYPICAL SECTION)

LOG STRINGERS:

NUMBER REQUIRED = []

* PEELLED LOG DIAMETER = []"

*REFER TO TABLE-1 AND COMPARE STRINGER SIZE REQUIREMENTS FOR BOTH PEDESTRIAN AND SNOW LOADING. IN THE SPACE ABOVE, ENTER THE LARGER STRINGER DIAMETER THAT SATISFIES THE TWO LOAD CASES.

RUNNING PLANKS = [YES/NO], [TREATED/UNTREATED]

CURBS/BRIDGE RAIL = [CURBS ONLY OR BRIDGE RAIL]

STEEL HARDWARE = [UNCOATED/GALVANIZED/WEATHERING STEEL]

TREATMENT - SEE GENERAL NOTES FOR SPECIFICATIONS

LOG STRINGERS = [TREATED/UNTREATED]

TREATED = [PENTACHLOROPHENOL/COPPER NAPHTHENATE/

OXINE COPPER/CCA/ACZA/ACQ]

DECK PLANKS, RUNNING PLANKS (IF REQUIRED), SILLS, AND BACKING PLANKS = [NONE/PENTACHLOROPHENOL/COPPER NAPHTHENATE]

TIMBER CURB ELEMENTS = [NONE/PENTACHLOROPHENOL/COPPER NAPHTHENATE]

BRIDGE RAILING & POSTS = [NATIVE/REDWOOD/WESTERN RED CEDAR]

UNTREATED = []

TREATED = [PENTACHLOROPHENOL/COPPER NAPHTHENATE/

OXINE COPPER/ACZA/ACQ]

ALL STEEL IN CONTACT W/ ACQ MUST BE GALVANIZED

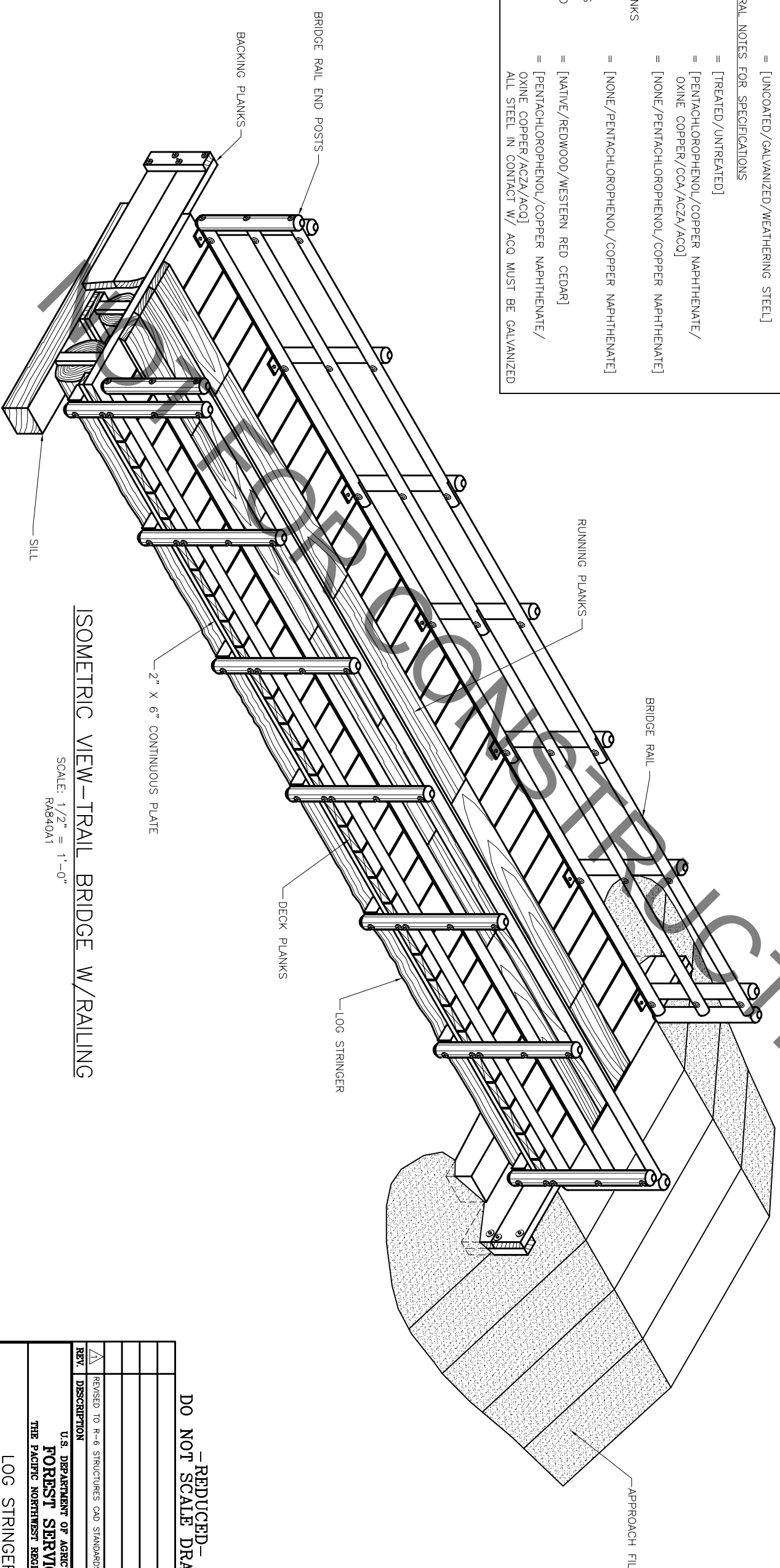


U.S. DEPARTMENT OF AGRICULTURE
FOREST SERVICE



STANDARD PLANS
FOR

LOG STRINGER TRAIL BRIDGE
[PROJECT NAME & BRIDGE NUMBER]



ISOMETRIC VIEW - TRAIL BRIDGE W/RAILING

SCALE: 1/2" = 1'-0"
RA840A1

DO NOT SCALE - REDUCED -
DRAWING

REV.	DESCRIPTION	MOE	DATE
Δ	REVISED TO R-6 STRUCTURES CAD STANDARDS		3/24/06

U.S. DEPARTMENT OF AGRICULTURE
FOREST SERVICE
THE PACIFIC NORTHWEST REGION (R-6)

LOG STRINGER
10 FT - 45 FT LONG
TRAIL BRIDGE

Forest: _____
Bridge No.: _____
Location: _____

Loading:
Length: _____
Width: _____

SHEET 1 of 4 DESIGN AID RA840

APPROVED:

FOREST ENGINEER

DATE _____

DWG NO. _____

Dwg. _____ of _____