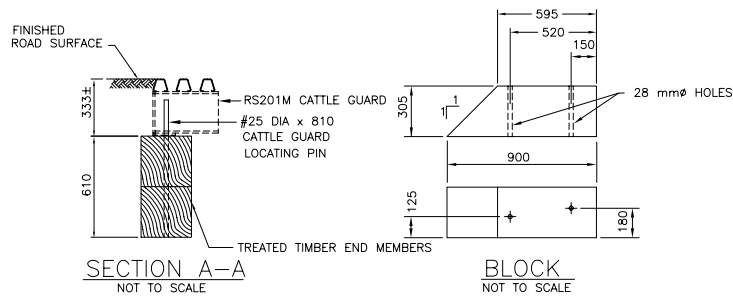


FRONT ELEVATION

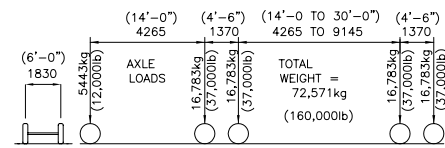
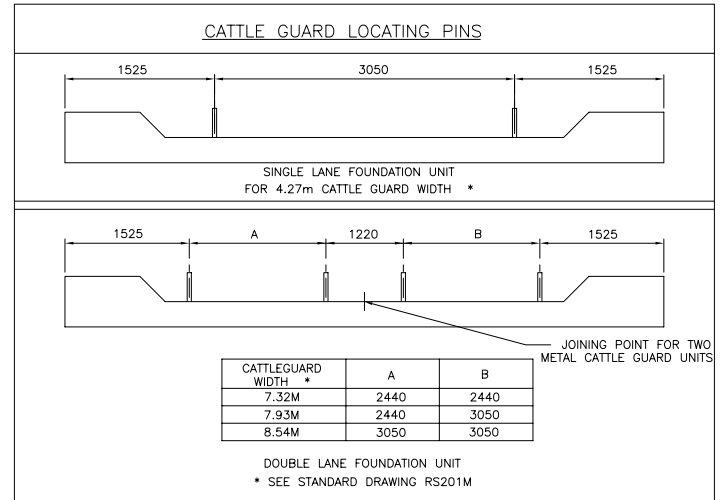


GENERAL NOTES

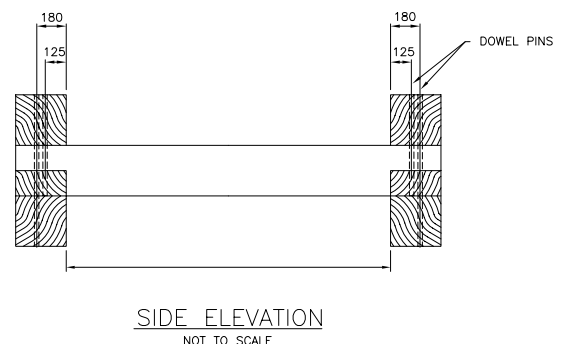
**WOOD:**  
WOOD SHALL BE ROUGH FULL SAWN NO.1 COAST DOUGLAS FIR OR WESTERN LARCH GRADED ACCORDING TO CURRENT RULES OF EITHER THE WEST COAST LUMBER INSPECTION BUREAU OR THE WESTERN WOOD PRODUCTS ASSOCIATION.

**TREATMENT:**  
AFTER FABRICATION, ALL WOOD SHALL BE INCISED AND THEN PRESSURE TREATED IN ACCORDANCE WITH AWPA C2 USING ANY ONE OF THE FOLLOWING TREATMENTS: (1) PENTACHLOROPHENOL MEETING AWPA P8 USING AN AWPA P9 TYPE A SOLVENT TO A RETENTION OF 9.6 kg/m<sup>3</sup>; (2) CREOSOTE MEETING AWPA P1 TO A RETENTION OF 192 kg/m<sup>3</sup>; OR (3) COPPER NAPHTHENATE TO A RETENTION OF 1.2 kg/m<sup>3</sup> OF COPPER. PENETRATION SHALL BE AS SPECIFIED IN AWPA C-2.

**DOWEL PINS:**  
SHALL BE 25mm ROUND AND MEET THE REQUIREMENTS OF ASTM A307; GALVANIZE IN ACCORDANCE WITH AASHTO M111 (ASTM A123).



MU72.6 (U80) OFF HIGHWAY TRUCK



THIS IS A METRIC DRAWING  
ALL DIMENSIONS ARE IN mm (MILLIMETERS) UNLESS NOTED  
DO NOT SCALE DRAWING

REV.	DESCRIPTION	APPROVED	DATE
1	CONVERTED RS211 TO METRIC AND UPDATED GENERAL NOTES		

U.S. DEPARTMENT OF AGRICULTURE  
FOREST SERVICE  
THE PACIFIC NORTHWEST REGION (R-6)

STANDARD  
TREATED TIMBER FOUNDATION  
FOR RS201M CATTLE GUARD

Forest: MS18 (HS20-44) &  
Bridge No.: Length: 2570mm MS72.6 (U80)  
Location: Width: VARIES

Designed: R.E.S. Drawn: C.L.Y. Checked: R.E.S.  
Submitted: Date: \_\_\_\_\_  
SUPERVISORY STRUCTURAL ENGINEER

Approved: /s/ R.E. SCHMIDT Date: 4/28 \_\_\_\_\_  
REGIONAL BRIDGE ENGINEER

SHEET 1 of 1 DWG.No. RS211M