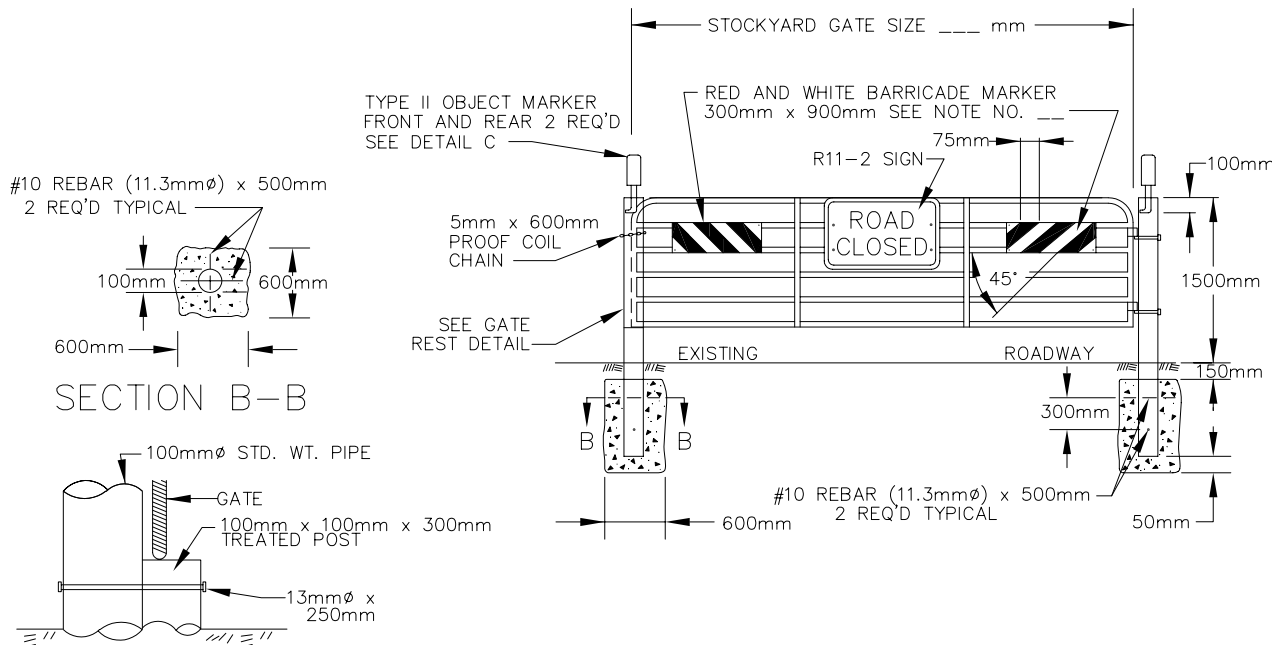
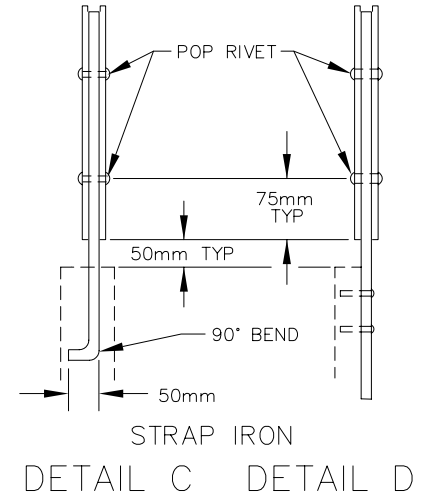
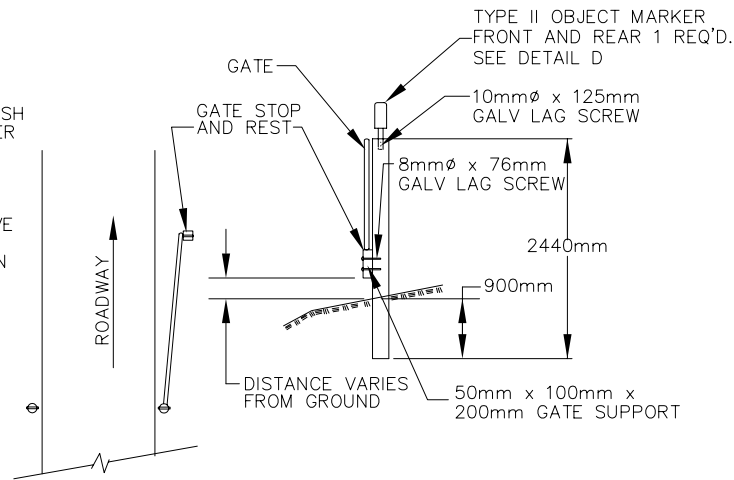


STOCKYARD GATE – OPTION 1

PROJECT	SHEET	TOTAL SHEETS
---------	-------	--------------

1. THE GATE SHALL BE STOCKYARD TYPE OR ITS EQUIVALENT. THE GATE FRAME SHALL BE FABRICATED FROM 32mm HIGH STRENGTH STEEL TUBING (450MPa. MIN. YIELD STRENGTH) THE VERTICAL STAYS SHALL BE HIGH STRENGTH PRESS FORMED 76mm x 300mm GAUGE STEEL (OR EQUAL) ON BOTH FACES. FINISH ON THE GATE AND THE TWO GATE POSTS SHALL CONSIST OF AT LEAST ONE PRIMER COAT AND ONE COAT OF DARK GREEN SURFACE PAINT.
2. ALL BOLTS AND LAG SCREWS SHOWN INCLUDE WASHERS AND NUTS.
3. BARRICADE MARKER PANELS SHALL BE ALUMINUM OVERLAIN WITH "3 M" REFLECTIVE SHEETING WIDE ANGLE FLATTOP PRESSURE SENSITIVE, NO. 3280 IMPERIAL WHITE TRANSPARENT "STOP SIGN RED" CODE NO. 712 SHALL BE APPLIED BY SILK SCREEN PROCESSING, AIR BRUSHING OR SPRAYING TO PRODUCE STRIPING, EQUAL PRODUCTS AND PROCESSES MAY BE APPROVED.
4. WOODEN POST AND WOODEN GATE REST SHALL BE TREATED WITH PENTA CHLOROPHENAL WITH MINIMUM NET RETENTION OF 8 kg/m³ (DRY CRYSTAL).
5. CONCRETE SHALL CONFORM TO SECTION 602–METHOD A, B or C.
6. ALL STEEL MEMBERS EXCEPT LAG SCREWS, CHAIN, GATE, FRAME, REBAR, AND BOLTS SHALL BE A-36.



MATERIAL LIST FOR GATE		
ITEM	DESCRIPTION	QUANTITY
BOLT	13mm ϕ x 250mm – FOR GATE REST	1 EA.
BOLTS	8mm ϕ x 64mm – FOR SIGNS	12 EA.
CHAIN	5mm PROOF COIL CHAIN 600mm LONG	1 EA.
GATE	STOCKYARD TYPE	1 EA.
GATE POSTS	100mm ϕ STANDARD WEIGHT PIPE	2 EA.
REBARS	#10 REBAR (11.3mm ϕ) x 500mm long	4 EA.
SIGN	TYPE II OBJECT MARKER	3 EA.
SIGN	RED AND WHITE BARRICADE MARKER	2 EA.
SIGN	R 11-2	1 EA.
TREATED POST	100mm x 100mm x 2440mm TREATED POST	1 EA.
TREATED POST	100mm x 100mm x 300mm TREATED POST	1 EA.
CONCRETE	FOOTINGS	0.6CU. Meter
LAG SCREW	10mm ϕ x 125mm LONG GALV.	2 EA.
LAG SCREW	8mm ϕ x 76mm LONG GALV.	2 EA.
FIR BLOCK	50mm x 100mm x 200mm GATE SUPPORT	1 EA.
STRAP IRON	64mm x 6mm x 500mm TYPE II SIGN MOUNTING BRACKET	3 EA.

GATE REST DETAIL