



White Admiral



Common Buckeye



American Lady



Eastern Comma



Great Spangled Fritillary



No. Amer. Harvester



Silvery Checkerspot



Mitchell's Satyr



Mourning Cloak



Black Swallowtail



Silver-spotted Skipper



Red Admiral



Question Mark



Northern Crescent



Baltimore Checkerspot



Aphrodite Fritillary



Viceroy



Sleepy Duskywing



Northern Blue



Columbine Duskywing



Red-spotted Purple



Monarch



Milbert's Tortoiseshell



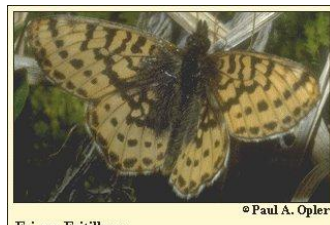
Atlantis Fritillary



Bog Fritillary



Freija Fritillary



Frigga Fritillary



Tawny Crescent



Meadow Fritillary



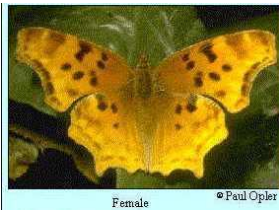
Variegated Fritillary



Juvenal's Duskywing



Hoary Comma



Satyr Comma



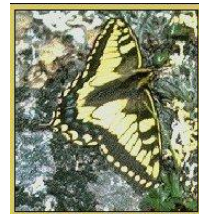
Northern Cloudywing



Dreamy Duskywing



Painted Lady Vanessa



Old World Swallowtail



Spring Azure



Compton Tortoiseshell



Canadian Tiger Swallowtail

Photos (left to right)

(Line 1)

- \_ White Admiral (*Limenitis arthemis arthemis*)
- \_ Common Buckeye (*Junonia coenia*)
- \_ American Lady (*Vanessa virginiensis*)
- \_ Eastern Comma (*Polygona comma*)
- \_ Great Spangled Fritillary (*Speyeria Cybele*)
- \_ No. Amer. Harvester (*Fenisea tarquinius*)
- \_ Silvery Checkerspot (*Chlosyne nycteis*)
- \_ Mitchell's Satyr (Endangered)  
(*Neonympha mitchellii*)

(Line 2)

- \_ Mourning Cloak (*Nymphalis antiopa*)
- \_ Black Swallowtails (*Papilio polyxenes*)
- \_ Silver-spotted Skipper (Eastside)  
(*Epargyreus clarus*)
- \_ Red Admiral (*Vanessa atalanta*)
- \_ Question Mark (*Polygona interrogationis*)
- \_ Northern Crescent (*p.cocytia*)
- \_ Baltimore Checkerspot  
(*nymphalidae;Euphydryas phaeton*)
- \_ Aphrodite Fritillary (*Speyeria Aphrodite*)

(Line 3)

- \_ Viceroy (*Limenitis archippus*)
- \_ Sleepy Duskywing (*Erynnis brizo*)

(Line 3 con't.)

- \_ Northern Blue (*Lycaeides idas*)
- \_ Columbine Duskywing (*Erynnis lucilius*)
- \_ Red-spotted Purple (*Limenitis arthemis*)
- \_ Monarch (*Danaus plexippus*)
- \_ Milbert's Tortoiseshell (*Aglais milberti*)

(Line 4)

- \_ Atlantis Fritillary (*Speyeria atlantis*)
- \_ Bog Fritillary (*Boloria eunomia*)
- \_ Freija Fritillary (*Boloria freija*)
- \_ Frigga Fritillary (*Boloria frigga*)
- \_ Tawny Crescent (*Phyciodes batesii*)
- \_ Meadow Fritillary (*Boloria Bellona*)
- \_ Variegated Fritillary (*Euptoieta Claudia*)
- \_ Juvenal's Duskywing (*Erynnis juvenalis*)

(Line 5)

- \_ Hoary Comma (*Polygona gracilis*)
- \_ Satyr Comma (*Polygona satyrus*)
- \_ Northern Cloudywing (*Thorybes pylades*)
- \_ Dreamy Duskywing (*Erynnis icelus*)
- \_ Painted Lady-Vanessa (*Vanessa cardui*)
- \_ Old World Swallowtail (*Papilio machaon*)
- \_ Spring Azure (*Polyommata Cellastrina ladon*)
- \_ Compton Tortoiseshell (*Nymphalis vaualbum*)
- \_ Canadian Tiger Swallowtail  
(*Papilio canaensis*)



Monarchs of Peninsula Point  
(Westside Hiawatha)

Peninsula Point is a good place to watch for monarchs during August and September. The dates they will be migrating down the peninsula are unpredictable. Your best chance to see large numbers of monarchs is when a cold front is passing through the area. Monarchs use the northerly winds associated with these fronts to speed their flight south across Lake Michigan on their 1,900 mile journey to Mexico where they overwinter. During the summer months, monarch butterflies use the Stonington Peninsula as a nursery, laying their eggs on milkweed plants and the larvae grow and mature there. If you are lucky and time your visit just right, you may be fortunate enough to see thousands of monarchs congregate at the Point, covering the cedar trees at dawn and flitting about the picnic area as the day warms.



# HIAWATHA National Forest



Hiawatha West



Hiawatha East

## Butterflies of the Hiawatha Checklist



Monarch Photo by Tom Desy

We gratefully acknowledge the generous permissions granted to reproduce these beautiful photographs by (alphabetical order): Vitaly Charny, Ken Childs, Tom Desy, Holly Grant, Corey Husic, Laura Maskell, Stephen C. Menasian, Bob Moul, Paul Opler, George Sansom, and forestry image photos by: Charles T. Bryson, David Cappaert, Whitney Cranshaw, and Jerry A. Payne, all without whom this publication might not have been possible.

LINKS:

- [www.fs.fed.us/wildflowers/pollinators](http://www.fs.fed.us/wildflowers/pollinators)
- [www.fs.fed.us/monarchbutterfly](http://www.fs.fed.us/monarchbutterfly)
- [www.naba.org](http://www.naba.org)



United States Dept of Agriculture  
Region 9 Forest Service  
Upper Peninsula of Michigan