



Green Mountain *National Forest*

Caring for the Land and Serving People

Prospect Rock Trail

Trail Facts:

Length: 3.5 miles round trip	Feature: View
Max elevation change: 1000 feet	USGS maps: Manchester Quad
Amount of use: Heavy	Hiking level: Moderate
Average hike time: 2 – 3 hours round trip	

Trail Description:

The trail, blazed with blue, follows the old Rootville Road up along the Downer Glen Ravine. After passing the Forest boundary, the trail gets steeper and crisscrosses several mountain streams. At 0.8 miles the trail leaves the brook at an old spring. The trail then meets up with the Appalachian/Long Trail at about 1.7 miles (same road). Just past the junction, a spur trail on the right leads 200 feet west to Prospect Rock. The summit has a fine view of the Manchester Valley. To the west is the prominent Mount Equinox, the tallest mountain in the Taconic Range. The lesser peaks of Little Equinox, just south of Mount Equinox, and Mother Myrick Mountain to the northwest are also visible. Please practice Leave No Trace ethics, such as carry out what you carry in. Trail blazing, maintenance, and signage will be minimal in Wilderness Areas.

Directions:

From Route 7 in Manchester, travel about a ¼ mile east on Route 11/30 to East Manchester Road. Turn right onto East Manchester Rd. then immediately left onto Rootville Road. Follow Rootville Rd. for about a mile. Limited parking is found at the trail head beyond the last residence (road condition worsens) and some limited lower parking is available below the water tank; please obey all parking signs.

Nearby Destinations or Attractions:

- Manchester Ranger Station
- Spruce Peak

Area Services:

Food and Services: Manchester
For all Emergencies: 911
911 Information: The trailhead is in the Town of Manchester, off Rootville Road.



U.S. Department
of Agriculture

Green Mountain & Finger Lakes National Forests

231 North Main Street, Rutland, VT 05701



Forest Service

(802) 747-6700 Phone

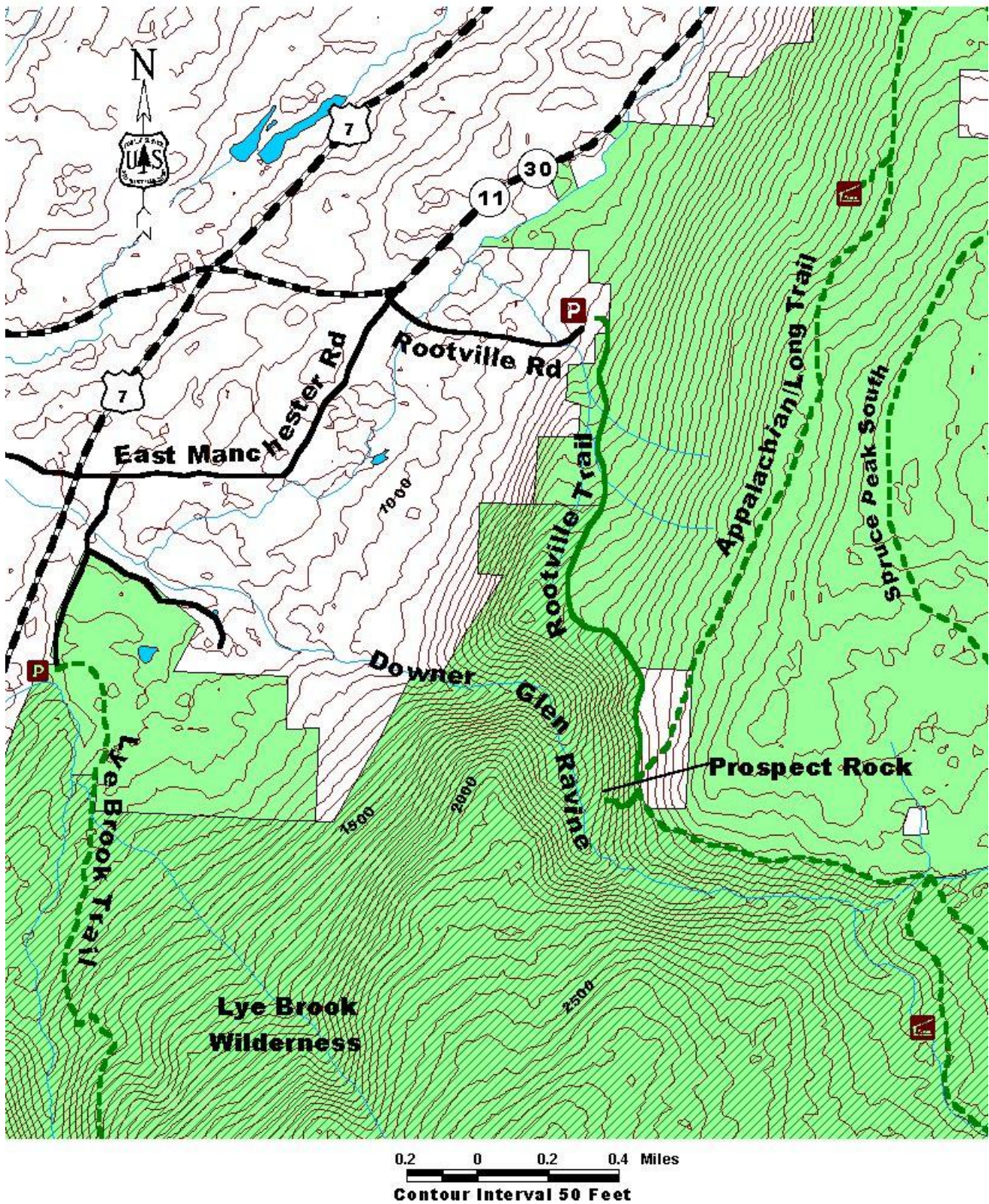
(802) 747-6766 FAX

Website: www.fs.fed.us/r9/gmfl

r9_gmfl_webmaster@fs.fed.us

The USDA is an equal opportunity provider and employer.

Map:



For More Information:

Manchester Ranger District, 2538 Depot St. (Rte 11/30), Manchester Center, VT 05255, (802) 362-2307

This Recreation Guide is Available in Large Print at Forest Service Information Centers

Last modified 3/30/2010