



Green Mountain *National Forest*

Caring for the Land and Serving People

Little Rock Pond / Green Mountain Loop

Trail Facts:

Length: 6.5 mile loop	Feature: Mountain, Pond, Views
Max. elevation change: 1070 feet	USGS maps: Danby and Wallingford Quad
Amount of use: Moderate	Hiking level: Moderate – Difficult
Average hike time: 4 – 5 hour loop	Camping Fee: \$5 per person / night at the pond during the summer / fall

Trail Description:

The Green Mountain Connector Trail, found across the road and slightly west of the parking lot, heads southwest for 0.6 miles to its junction with the Green Mountain Trail. Follow the blue blazes. From here the trail ascends, following old woods roads for the next mile and leads to the summit of Green Mountain at 2.5 miles. The trail continues along the ridgeline and passes several spur trails that lead to excellent views of the surrounding mountains and Little Rock Pond. Crossing ledges, the trail descends steadily to its junction with the Little Rock Pond Loop Trail at the north end of the pond. This trail leads to the Appalachian/Long Trail, in either direction. The south end of the pond is where the tenting area, shelter, and a Green Mountain Club caretaker are found. Follow the AT/LT, blazed with white, south on the relatively flat 2-mile hike back to the parking area at Forest Road 10. A \$5 per person per night fee, paid to the Green Mountain Club caretaker, helps maintain the shelter and trails, monitor impacts, and protect vulnerable soil, water, and vegetation. Please practice Leave No Trace ethics, such as carry out what you carry in.

Directions:

From Route 7 in Danby, turn east onto Brooklyn Rd. (Forest Road 10). Take FR 10 for approximately 3.5 miles to the Appalachian/Long Trail crossing;

From Route 100 in Weston, turn west onto Landgrove Road. Take this road past Weston Commons and bear left over a bridge at Lawrence Hill Road. Turn right at 4.2 miles onto Forest Road 12. Take FR 12 for 0.4 miles and turn right onto Forest Road 10. Follow FR 10 for about 11.0 miles until you reach the AT/LT crossing.

- The parking area is found on the south side of the road. Parking is also available at the Big Branch Day-Use Area, 0.5 miles west of the AT/LT crossing. The trailhead from Big Branch is found across the road and about 200 feet west (left) of the parking entrance.

Area Services:



U.S. Department
of Agriculture

Green Mountain & Finger Lakes National Forests

231 North Main Street, Rutland, VT 05701



Forest Service

(802) 747-6700 Phone

(802) 747-6766 FAX

Website: www.fs.fed.us/r9/gmfl

r9_gmfl_webmaster@fs.fed.us

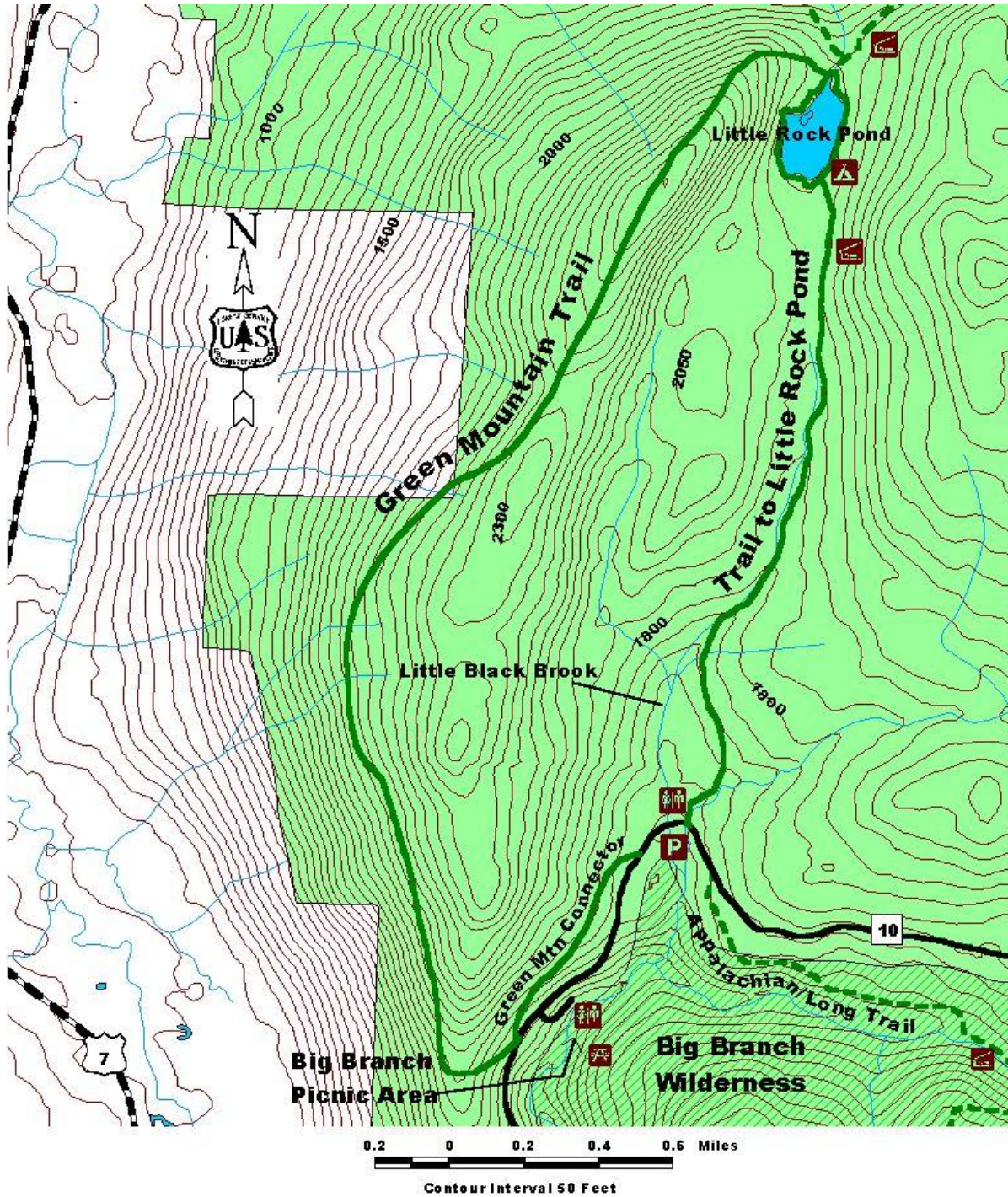
The USDA is an equal opportunity provider and employer.

Food and Services: Danby or Weston

For all Emergencies: 911

911 Information: The trailhead is in the Town of Mount Tabor, off Tabor Mountain Road.

Map:



For More Information:

Manchester Ranger District, 2538 Depot St. (Rte 11/30), Manchester Center, VT 05255, (802) 362-2307

This Recreation Guide is Available in Large Print at Forest Service Information Centers

Last modified 3/31/2010