



# Green Mountain *National Forest*

Caring for the Land and Serving People

# Harmon Hill Trail

## Trail Facts:

<b>Length:</b> 3.6 miles round trip	<b>Feature:</b> Mountain, View
<b>Max elevation change:</b> 970 feet	<b>USGS maps:</b> Bennington, Pownal & Woodford Quad
<b>Amount of use:</b> Moderate	<b>Hiking level:</b> Difficult
<b>Average hike time:</b> 3 – 4 hours round trip	

## Trail Description:

This section of the Appalachian/Long Trail, blazed in white, heads south to the summit of Harmon Hill. The trailhead is found on the opposite side of Route 9 from the parking area. Here the trail immediately enters the woods and begins its very steep ascent using rock staircases and switchbacks. Extreme caution should be used in wet, snowy, or icy conditions. The grade gradually moderates as the trail bears left, then right, and finally reaches the open summit of Harmon Hill. Prescribed burns, forest fires deliberately set and controlled by trained Forest Service fire crews, maintain the historic opening and the vistas of the surrounding landscape. The view is particularly fine to the west where Bennington, the prominent Mount Anthony, and other hills and mountains of the Taconic Range stand out. Please practice Leave No Trace ethics, such as carry out what you carry in.

## Directions:

**From Route 7 in Bennington**, the trailhead is 5.0 miles east on Route 9. The parking area can be found on the north side of Route 9 at the Appalachian / Long Trail crossing.

**From Route 100 (traffic light) in Wilmington**, travel about 15.8 miles west on Route 9. The parking area can be found on the north side of Route 9 at the Appalachian / Long Trail crossing.

## Nearby Destinations or Attractions:

- Red Mill Brook Campground
- Bald Mountain

## Area Services:

<b>Food and Services:</b> Bennington.
<b>For all Emergencies: 911</b>
<b>911 Information:</b> The trailhead is in the Town of Woodford, off Route 9.



U.S. Department  
of Agriculture

Green Mountain & Finger Lakes National Forests

231 North Main Street, Rutland, VT 05701



Forest Service

(802) 747-6700 Phone

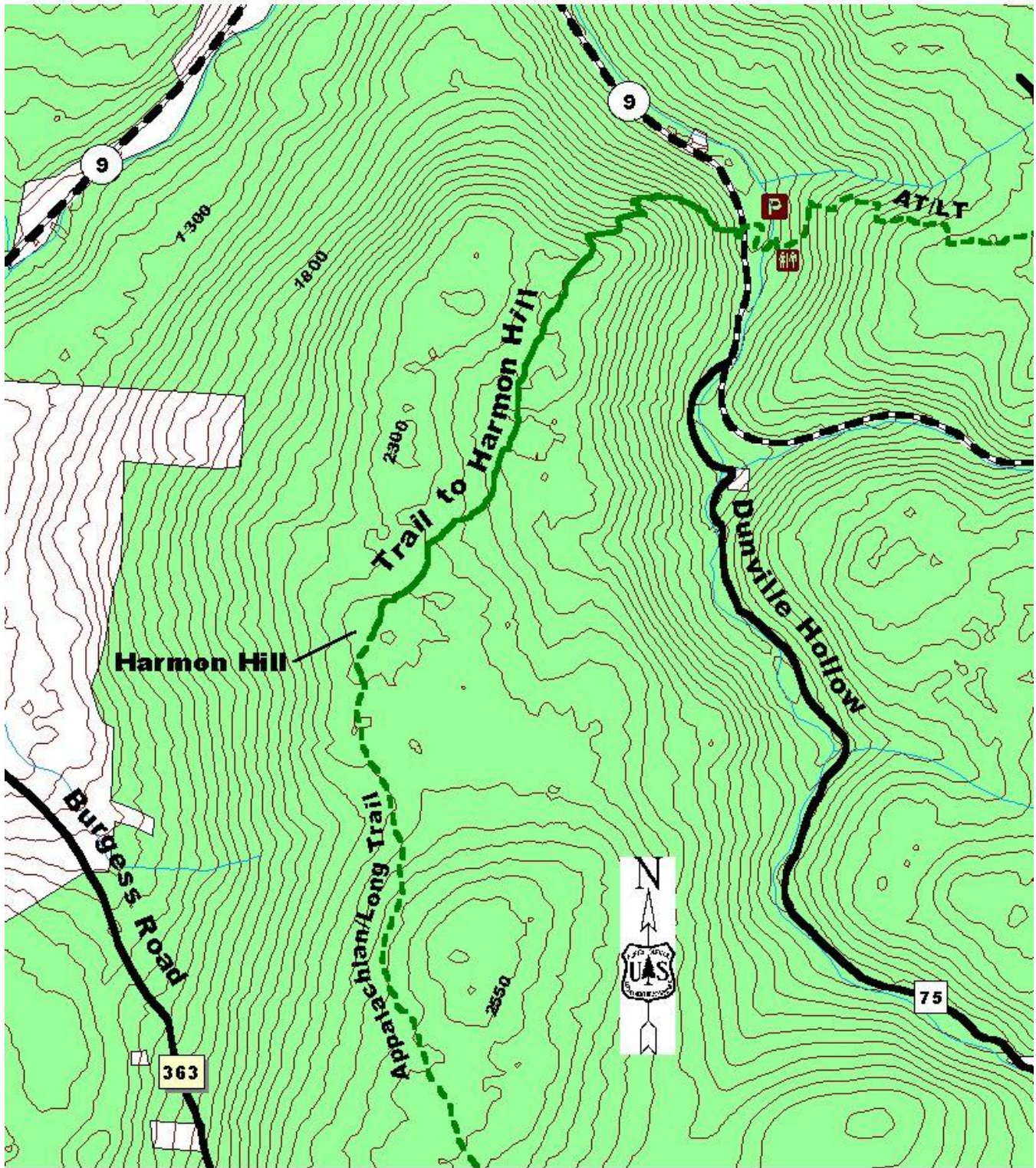
(802) 747-6766 FAX

Website: [www.fs.fed.us/r9/gmfl](http://www.fs.fed.us/r9/gmfl)

[r9\\_gmfl\\_webmaster@fs.fed.us](mailto:r9_gmfl_webmaster@fs.fed.us)

The USDA is an equal opportunity provider and employer.

**Map:**



0.2 0 0.2 0.4 Miles

Contour Interval 50 Feet

**For More Information:**

Manchester Ranger District, 2538 Depot St. (Rte 11/30), Manchester Center, VT 05255, (802) 362-2307

This Recreation Guide is Available in Large Print at Forest Service Information Centers

Last modified 3/30/2010