



Green Mountain *National Forest*

Caring for the Land and Serving People

Griffith Lake / Baker Peak via the Lake Trail

Trail Facts:

Length: 6.6 miles round trip to Griffith Lake 5.6 miles round trip to Baker Peak	Feature: Mountain, Lake, View
Max elevation change: 1910 feet to Griffith Lake 2100 feet to Baker Peak	USGS maps: Danby Quad
Amount of use: Moderate	Hiking level: Moderate – Difficult
Average hike time: 4 ¾ – 6 ¼ hours round trip	Camping Fee: \$5 per person / night at Griffith Lake during the summer / fall

Trail Description:

The Lake Trail climbs out of the Otter Creek lowlands and enters Big Branch Wilderness Area on a long switchback that eventually brings one to McGinn Brook. This brook flows out of the spectacular ravine cutting the mountain flank that can be seen from Route 7. At the McGinn Brook crossing, the Baker Peak Trail branches off to the north (left). In just short of a mile, the Baker Peak Trail meets the Appalachian/Long Trail and ascends over bare ledges, affording fine views of the Otter Creek Valley, Dorset Mountain, and other peaks in the Taconic Mountain Range. The Lake Trail continues east, to Griffith Lake, over gradual grades on an old woods road crossed with small streams. The trail leaves the road, then crests a small hill and reaches the AT/LT junction. Head south (right) to Griffith Lake. A \$5 per person/night fee, paid to the Green Mountain Club caretaker, helps maintain the shelter and trails, monitor impacts, and protect vulnerable soil, water, and vegetation. Please practice Leave No Trace ethics, such as carry out what you carry in. Trail blazing, maintenance, and signage will be minimal in Wilderness Areas.

Directions:

From Route 11/30 in Manchester, travel approximately 10 miles north on Route 7. Turn east (right) on South End Road (Forest Road 259). Follow FR 259 for about a ½ mile, past a sharp right, to the trailhead parking on the left.

From the center of Danby, travel 2.0 miles south on Rte 7, turn east (left) on South End Road (Forest Road 259). Follow FR 259 for about a ½ mile, past a sharp right, to the trailhead parking on the left.

Area Services:

Food and Services: East Dorset or Danby
For all Emergencies: 911
911 Information: The trailhead is in the Town of Danby, off South End Road.



U.S. Department
of Agriculture

Green Mountain & Finger Lakes National Forests

231 North Main Street, Rutland, VT 05701



Forest Service

(802) 747-6700 Phone

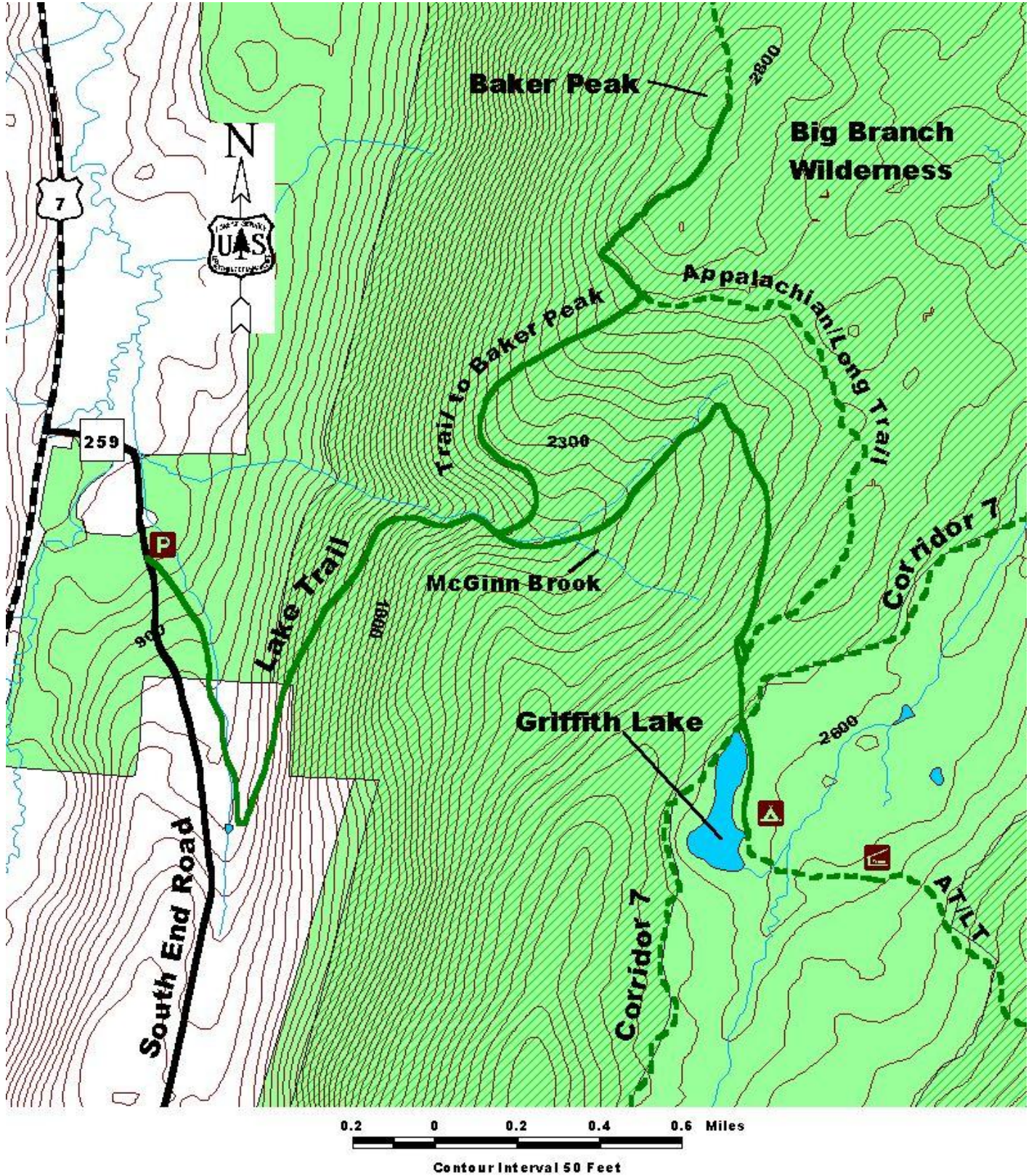
(802) 747-6766 FAX

Website: www.fs.fed.us/r9/gmfl

r9_gmfl_webmaster@fs.fed.us

The USDA is an equal opportunity provider and employer.

Map:



For More Information:

Manchester Ranger District, 2538 Depot St. (Rte 11/30), Manchester Center, VT 05255, (802) 362-2307

This Recreation Guide is Available in Large Print at Forest Service Information Centers

Last modified 4/15/2010