



# Green Mountain *National Forest*

Caring for the Land and Serving People

# Wilkinson Trails

## Trail Facts:

<b>Length:</b> Various	<b>Feature:</b> Woods, Beaver Pond, Streams
<b>Max. Elevation Change:</b> 400 feet	<b>USGS maps:</b> East Middlebury
<b>Amount of use:</b> Moderate	<b>Difficulty level:</b> Various – see description
<b>Average trip time:</b> Various	

## Trail Description:

These trails are a system of interconnected loops of varying length and difficulty. During the winter months these are **ungroomed** cross-country skiing trails. Easiest, More Difficult, and Most Difficult ratings are relative for this vicinity. An Easiest trail may be too difficult for many. Use caution on the Blackberry Run and Beaver Pond Crossing trails. Beaver activity can change water levels and cause the trails to be swampy or icy. Please practice Leave No Trace ethics, such as carry out what you carry in. The Widow's Clearing Trail and the Catamount Trail can be accessed from the Widow's Clearing parking lot.

Intersection Numbers	Trail Name	Length (mi.)	Difficulty Level
0-1	Blackberry Run	0.6	More Difficult
1-11	Shannie's Loop	0.4	Easiest
4-5-7	A.O.A. Trail	0.4	More Difficult
3-8	Willow Run	0.6	Easiest
5-6	Zip	0.1	<b>Most Difficult</b>
13-14	Beaver Pond Crossing	0.1	Easiest
9-12	Goshen Brook Trail	0.4	More Difficult
2-13-10	Blue Heron Run	0.4	Easiest
2-4-6-9-11-2	Moose Loop	2.2	More Difficult

## Directions:

**From Middlebury**, travel south for 4 miles on Route 7 to the Junction of Route 125. Travel east on Route 125 for 6.8 miles and turn right onto Forest Road 32. Follow FR 32 for 1.9 miles. Parking is in the Widow's Clearing Parking Area, on the left. The Wilkinson Trailhead is on the other side of FR 32.

**From Rochester**, travel north for 4 miles on Route 100 to the junction of Route 125. Travel west on Route 125 for 10.9 miles and turn left onto Forest Road 32. Follow FR 32 for 1.9 miles. Parking is in the Widow's Clearing Parking Area, on the left. The Wilkinson Trailhead is on the other side of FR 32.

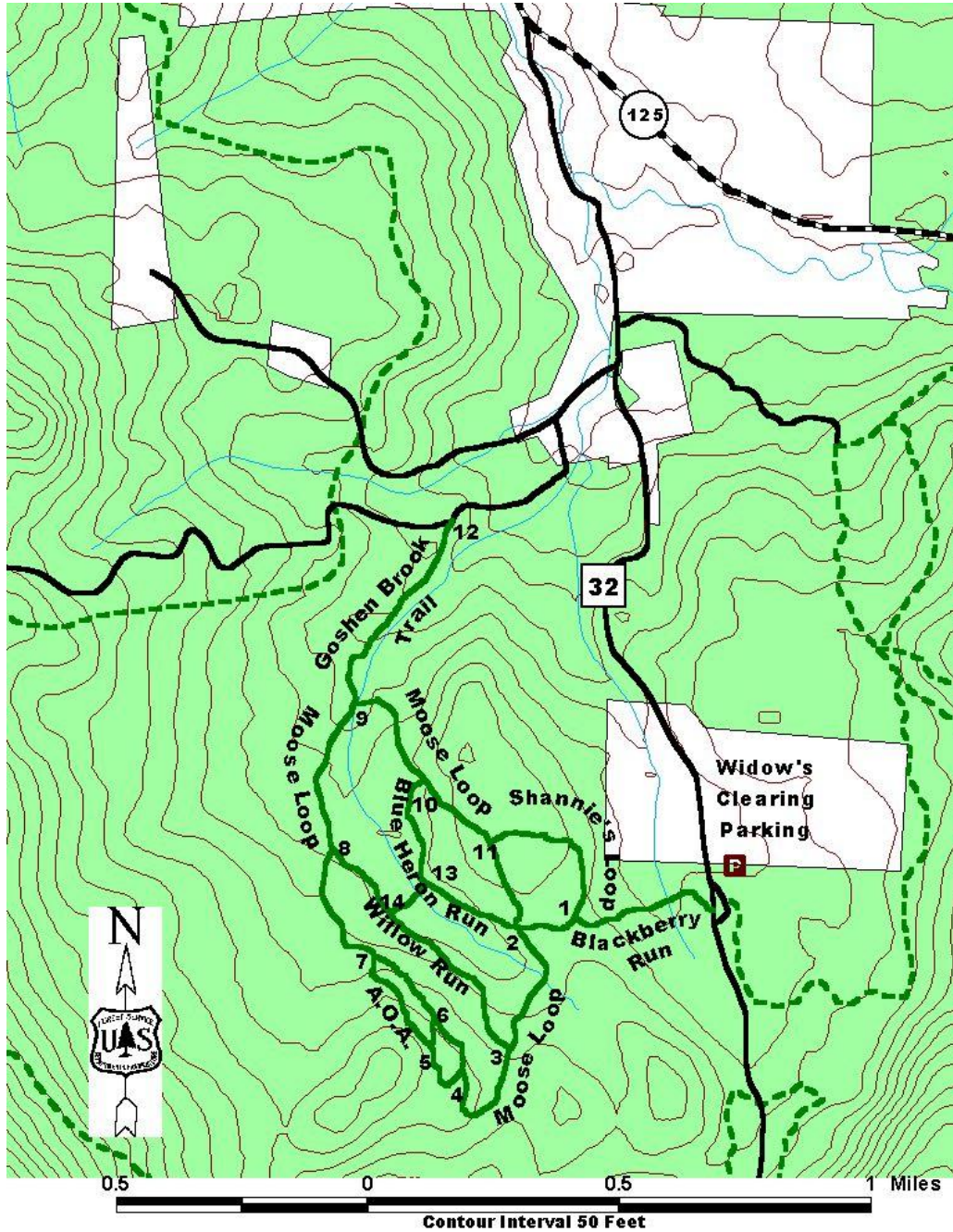
 	<b>U.S. Department of Agriculture</b> <b>Forest Service</b>	<b>Green Mountain &amp; Finger Lakes National Forests</b> 231 North Main Street, Rutland, VT 05701 (802) 747-6700 Phone      (802) 747-6766 FAX Website: <a href="http://www.fs.fed.us/r9/gmfl">www.fs.fed.us/r9/gmfl</a> <a href="mailto:r9_gmfl_webmaster@fs.fed.us">r9_gmfl_webmaster@fs.fed.us</a>
---------------------------------------------------------------------------------------------------------------------------------------------------------------------------	----------------------------------------------------------------	-----------------------------------------------------------------------------------------------------------------------------------------------------------------------------------------------------------------------------------------------------------------------------------------------------------------

The USDA is an equal opportunity provider and employer.

**Area Services:**

<b>Food and Services:</b> Middlebury restaurants and fuel stations
<b>For all Emergencies: 911</b>
<b>911 Information:</b> The trailhead is in the Town of Goshen, off Forest Road 32

**Map:**



**For More Information:**

Middlebury Ranger District, 1007 Route 7 South, Middlebury, VT 05753, (802) 388-4362  
 Rochester Ranger District, 99 Ranger Rd., Rochester, VT 05767, (802) 767-4261

This Recreation Guide is Available in Large Print at Forest Service Information Centers

Last modified 2/18/2011