



Green Mountain National Forest Widow's Clearing Trail

Caring for the Land and Serving People

Trail Facts:

Length: 2.99 miles (one direction)	Feature: Catamount Trail Access, Water Tower and Wilkinson Ski Trail Systems Access
Max. Elevation Change: 350 feet	USGS maps: East Middlebury
Amount of use: Moderate	Difficulty level: More Difficult
Average trip time: 2 hours	

Trail Description:

This is an **un-groomed** cross-country ski trail that starts at the Chatfield or Widow's Clearing Parking Areas. This trail description will start from the Chatfield Parking Area. From the parking area follow the trail markers (blue diamonds) to a locked gate. Once around the gate the trail follows a woods road, which ascends gradually to a height of land, and then descends to its intersection with the Water Tower Ski Trail System. After 0.3 of a mile the Widow's Clearing Trail takes a left turn and leaves the Water Tower Ski Trail System. The trail continues on easy grades to an intersection at 2.3 miles where the Catamount Trail turns left towards the Blueberry Hill Inn and Ski Center while the Widow's Clearing Trail continues straight. The trail descends gradually to a beaver pond. Continue past the beaver pond to the Widow's Clearing Parking Area. Skiers can choose to continue skiing on the Wilkinson Ski Trail System from this parking area.

Directions (Chatfield Parking Lot):

From Middlebury, travel south 4.0 miles on Route 7 to where it intersects with Route 125. Travel east on Route 125 for approximately 7 miles to its intersection with FR 67 (Brooks Rd). Turn right onto FR 67 to the Chatfield Parking Area.

From Rochester, travel north 4.0 miles on Route 100 to its intersection with Route 125. Travel west on Route 125 for approximately 8.5 miles to its intersection with FR 67 (Brooks Rd). Turn left onto FR 67 to the Chatfield Parking Area.

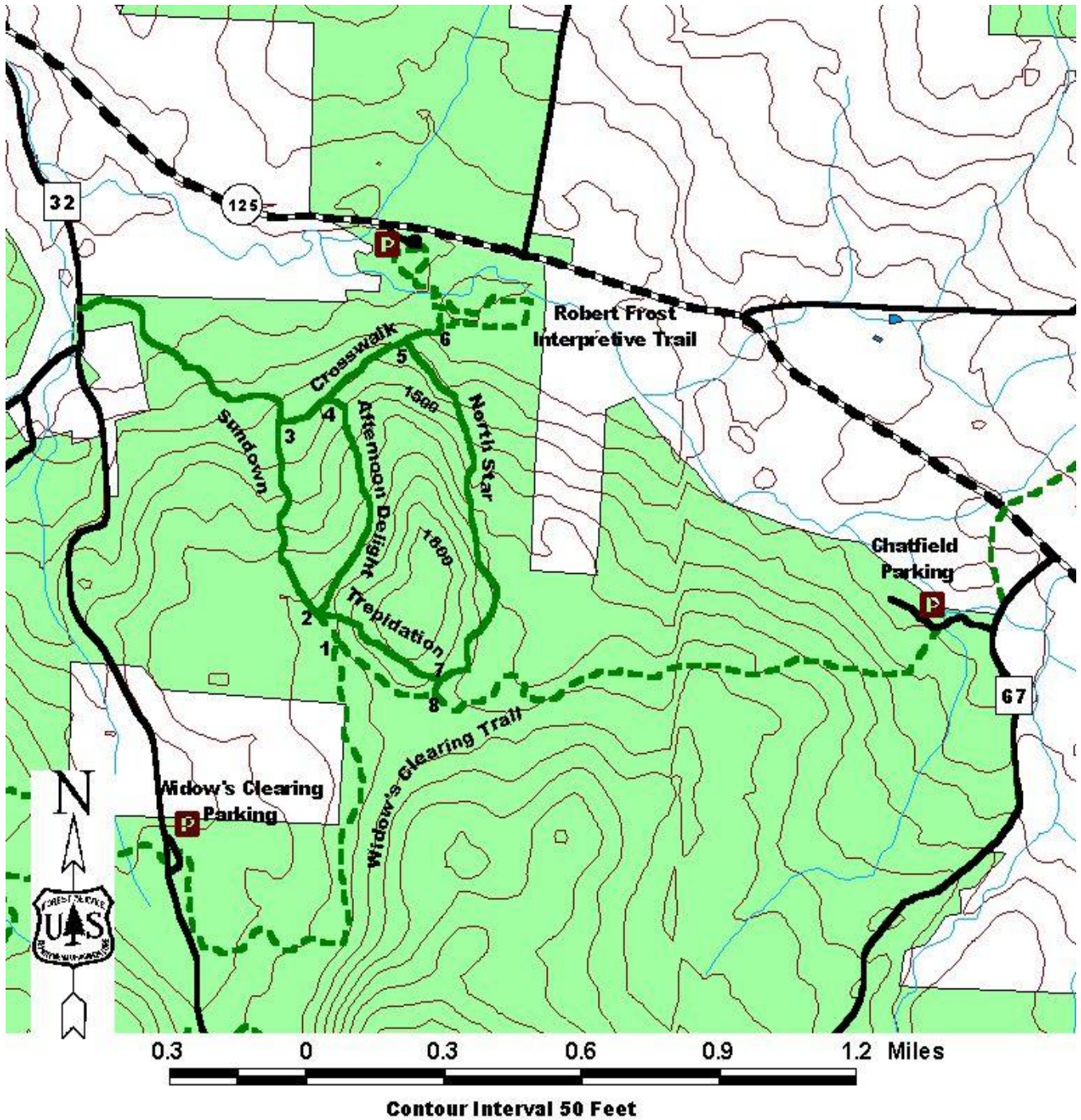
Area Services:

Food and Services: Middlebury & Rochester restaurants and fuel stations
For all Emergencies: 911
911 Information: The trailhead is in the Town of Ripton, off Route 125 (FR 67)

 	U.S. Department of Agriculture Forest Service	Green Mountain & Finger Lakes National Forests 231 North Main Street, Rutland, VT 05701 (802) 747-6700 Phone (802) 747-6766 FAX Website: www.fs.fed.us/r9/gmfl r9_gmfl_webmaster@fs.fed.us
--	--	---

The USDA is an equal opportunity provider and employer.

Map:



For More Information:

Middlebury Ranger District, 1007 Route 7 South, Middlebury, VT 05753, (802) 388-4362
Rochester Ranger District, 99 Ranger Rd., Rochester, VT 05767, (802) 767-4261

This Recreation Guide is Available in Large Print at Forest Service Information Centers

Last modified 3/9/2010