



Green Mountain National Forest Water Tower Trails

Caring for the Land and Serving People

Trail Facts:

Length: 5.56 miles total	Feature: Woods, Catamount Trail Access, Widow's Clearing Ski Trail Access
Max. Elevation Change: 550 feet	USGS maps: East Middlebury
Amount of use: Moderate	Difficulty level: Various – see description
Average trip time: Various	

Trail Description:

This is a system of interconnected trails varying length and difficulty. During the winter months these are **un-groomed** cross-country skiing loops. Easiest, More Difficult, and Most Difficult ratings are relative for this vicinity. An Easiest trail may be too difficult for many. Different trails are managed for different types of uses, see the list below. Please practice Leave No Trace ethics, such as carry out what you carry in.

Intersection Numbers	Name	Length (mi.)	Difficulty Level	Managed Use
1-2	Connector	0.07	Easiest	
2-3	Sundown	0.4	More Difficult	
3-5	Crosswalk	0.3	Easiest	
5-7	North Star	1.0	More Difficult	
2-4	Afternoon Delight	0.5	More Difficult	
2-7	Trepidation	0.3	Most Difficult	
	Widow's Clearing	2.99	More Difficult	

Directions:

From Middlebury, travel south 4.0 miles on Route 7 to where it intersects with Route 125. Travel east on Route 125 for 5.8 miles. Parking is at the Robert Frost Interpretive Trail on the right.

From Rochester, travel north 4.0 miles on Route 100 to its intersection with Route 125. Travel west on Route 125 for 9.9 miles. Parking is at the Robert Frost Interpretive Trail on the left.

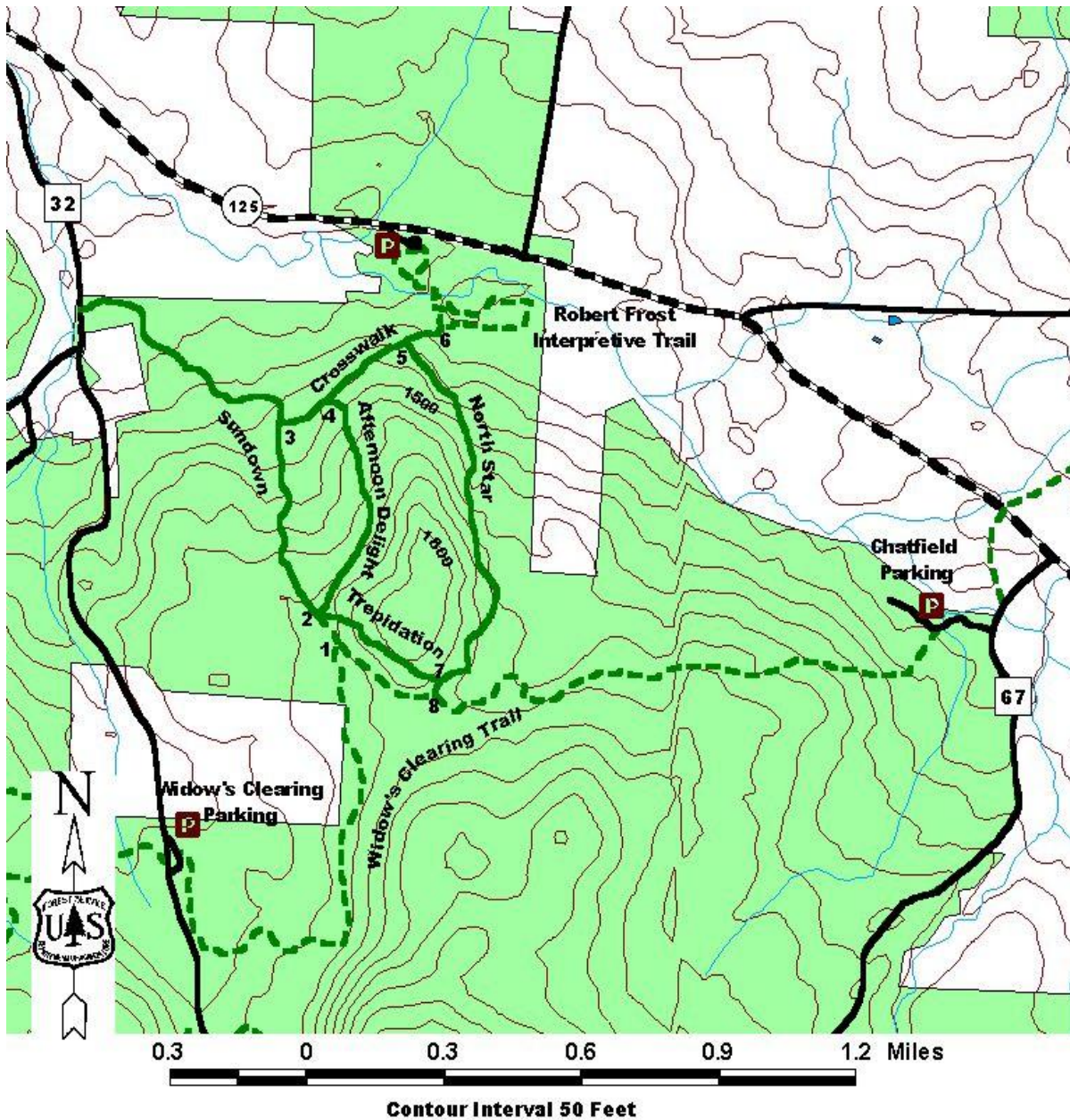
 	U.S. Department of Agriculture Forest Service	Green Mountain & Finger Lakes National Forests 231 North Main Street, Rutland, VT 05701 (802) 747-6700 Phone (802) 747-6766 FAX Website: www.fs.fed.us/r9/gmfl r9_gmfl_webmaster@fs.fed.us
------	--	---

The USDA is an equal opportunity provider and employer.

Area Services:

Food and Services: Middlebury restaurants and fuel stations
For all Emergencies: 911
911 Information: The trailhead is in the Town of Ripton, off Route 125 (Robert Frost Trail)

Map:



For More Information:

Middlebury Ranger District, 1007 Route 7 South, Middlebury, VT 05753, (802) 388-4362
 Rochester Ranger District, 99 Ranger Rd., Rochester, VT 05767, (802) 767-4261

This Recreation Guide is Available in Large Print at Forest Service Information Centers

Last modified 3/9/2010