



# Green Mountain National Forest

## Thresher Hill/Pine Brook Loop

Caring for the Land and Serving People

### Trail Facts:

<b>Length:</b> 5.0 miles round trip,	<b>Feature:</b> Stream, Woods
<b>Max. Elevation Change:</b> 500 Feet	<b>USGS maps:</b> Breadloaf and Mount Carmel Quads
<b>Amount of use:</b> Light	<b>Difficulty level:</b> Moderate - More Difficult
<b>Average trip time:</b> 2 ½ – 3 hours	

### Trail Description:

The Pine Brook Trail covers 1.5 miles connecting Bingo and Thresher Hill Roads in Rochester. Travel along FR 42 to Thresher Hill Road (FR 62), which is located on the right at a four-way intersection. Follow FR 62 to its end, where Pine Brook Trail begins. The trail follows an old road and crosses Pine Brook and a couple of smaller streams on trail bridges. The trail continues through a young hardwood forest, gradually descending along Pine Brook, then passes through an old hemlock forest. Next it descends sharply for a short distance and arrives at a closed gate at the bottom of a hill. The gate is closed to protect the soft roadbed from vehicle traffic. **Please use caution and reduce speed on approaching the gate.** On the other side of the gate the trail takes a sharp right turn and soon intersects Pine Brook Road, a gravel surface road. Finally, take a left at this intersection to connect with Bingo Road (FR 42).

Please practice Leave No Trace ethics, such as carry out what you carry in.

### Directions:

**From Rochester,** travel south on Route 100 to the junction with Route 73. Travel west on Route 73 for 4.0 miles. When Route 73 makes a 90-degree left hand turn, go straight onto Forest Road 42 (Bingo Road). Follow FR 42 for at least 5.0 miles and park in one of the small pull-offs.

**From Brandon,** travel east on Route 73 for 12.3 miles. When Route 73 makes a 90-degree right hand turn, turn left onto Forest Road 42 (Bingo Road). Follow FR 42 for at least 5.0 miles and park in one of the small pull-offs.

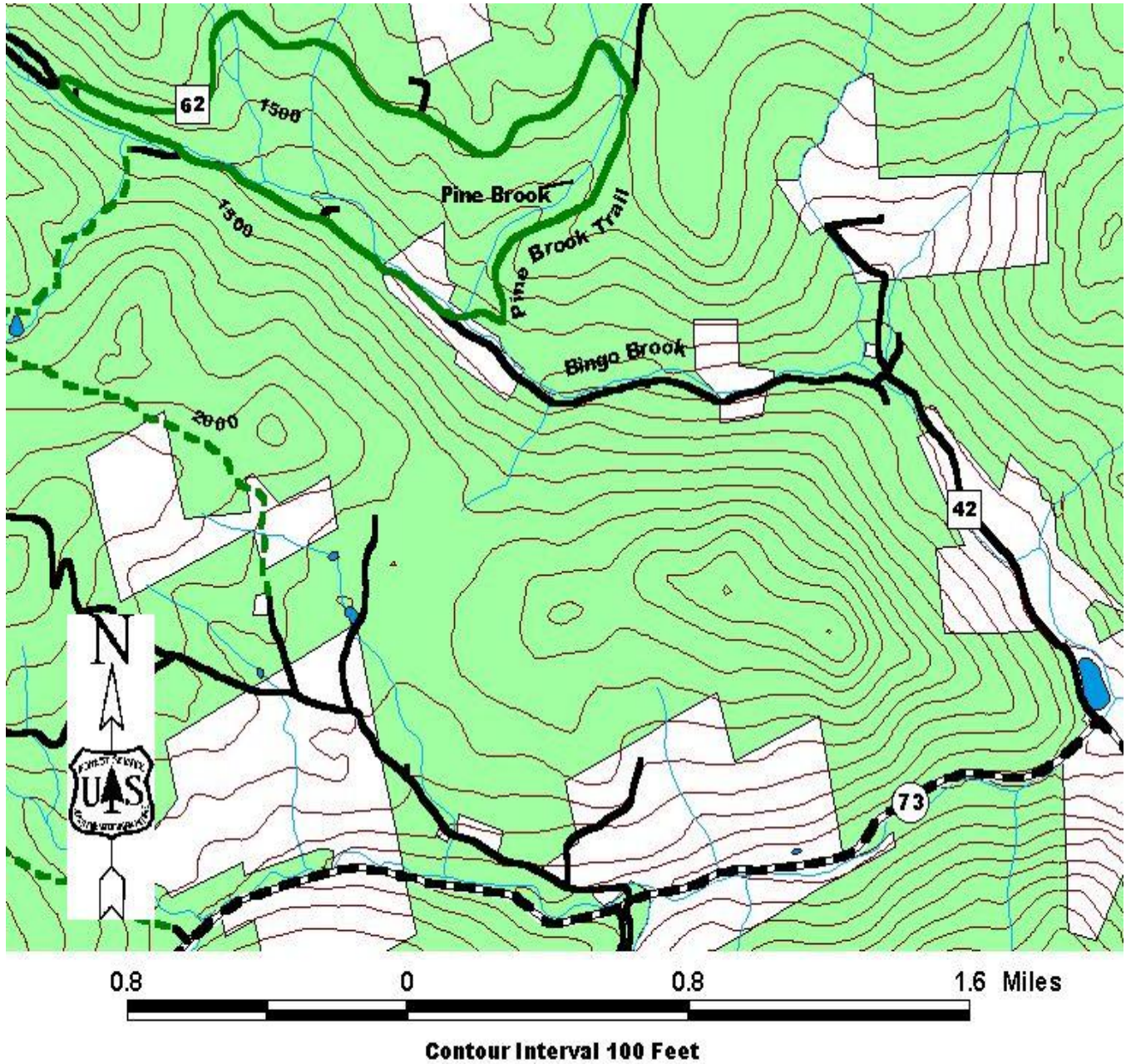
### Area Services:

<b>Food and Services:</b> Rochester restaurants and fuel stations
<b>For all Emergencies: 911</b>
<b>911 Information:</b> The trailhead is in the Town of Rochester, on Forest Road 42 (Bingo Road)

 <b>U.S. Department of Agriculture</b>  <b>Forest Service</b>	<b>Green Mountain &amp; Finger Lakes National Forests</b> 231 North Main Street, Rutland, VT 05701 (802) 747-6700 Phone      (802) 747-6766 FAX Website: <a href="http://www.fs.fed.us/r9/gmfl">www.fs.fed.us/r9/gmfl</a> <a href="mailto:r9_gmfl_webmaster@fs.fed.us">r9_gmfl_webmaster@fs.fed.us</a>
----------------------------------------------------------------------------------------------------------------------------------------------------------------------------------------------------------------------------------------	-----------------------------------------------------------------------------------------------------------------------------------------------------------------------------------------------------------------------------------------------------------------------------------------------------------------

The USDA is an equal opportunity provider and employer.

**Map:**



**For More Information:**

Middlebury Ranger District, 1007 Route 7 South, Middlebury, VT 05753, (802) 388-4362  
Rochester Ranger District, 99 Ranger Rd., Rochester, VT 05767, (802) 767-4261

This Recreation Guide is Available in Large Print at Forest Service Information Centers

Last modified 3/9/2010