



Green Mountain National Forest Texas Falls Area Trails

Caring for the Land and Serving People

Trail Facts:

Length: 1.2 miles round trip	Feature: Falls, Streams, Picnic Shelter
Max. Elevation Change: Variable	USGS maps: Breadloaf Quad
Amount of use: Moderate – High	Hiking level: Easy
Average trip time: ½ hour – 1 hour	

Texas Falls Nature Trail

From the upper parking lot, the trail meanders through the forest along Hancock Brook 0.3 miles toward the Texas Falls Observation Sites. The trail then loops back up to the left, heading toward the upper section of the nature trail, before heading back down toward the parking lot. The trail loop length is 1.2 miles, with a 70 foot elevation change.

Observation Site:

The observation site overlooks Texas Falls, a short series of low falls and cascades flowing through a small gorge that was formed by glacial meltwater. There is a walkway and bridge over the stream from which you can see the falls and large potholes scoured out of the rock by the meltwater. **For your safety, swimming is not permitted.** There is a vault toilet, a picnic table, and a few benches near the falls. The Texas Falls Nature Trail starts at the falls and continues to the picnic area. There is also trail access and parking at the picnic area.

Picnic Area:

Up the road from the falls, the picnic area is on the left side of the road, bordering the brook. There is a picnic pavilion with 10 tables under it, as well as 13 tables scattered around the area, with grills located at each picnic site. Use of the pavilion is on a first come first served basis. Reservations for parties are not accepted. Also available are two handicap accessible vault toilets. There is no garbage service and all trash must be carried away with you. **Drinking water is not available at Texas Falls.**

Directions:

From Rochester, travel north on Route 100 to its intersection with Route 125. Travel west on Route 125 for 3.1 miles and turn right onto Forest Road 39. Parking is located at the Falls Observation Site at 0.5 miles and at the Picnic Area at 0.7 miles. The road ends beyond the gate on FR 39. The road is plowed in the winter for parking up to the gate. The gate is closed for the winter.

From Middlebury, travel south on Route 7 to its intersection with Route 125. Travel east on Route 125 for 9.8 miles and turn left onto Forest Road 39. . Parking is located at the Falls Observation Site at 0.5 miles and at the Picnic Area at 0.7 miles. The road ends beyond the gate on FR 39. The road is plowed in the winter for parking up to the gate. The gate is closed for the winter.



U.S. Department
of Agriculture



Forest Service

Green Mountain & Finger Lakes National Forests

231 North Main Street, Rutland, VT 05701

(802) 747-6700 Phone

(802) 747-6766 FAX

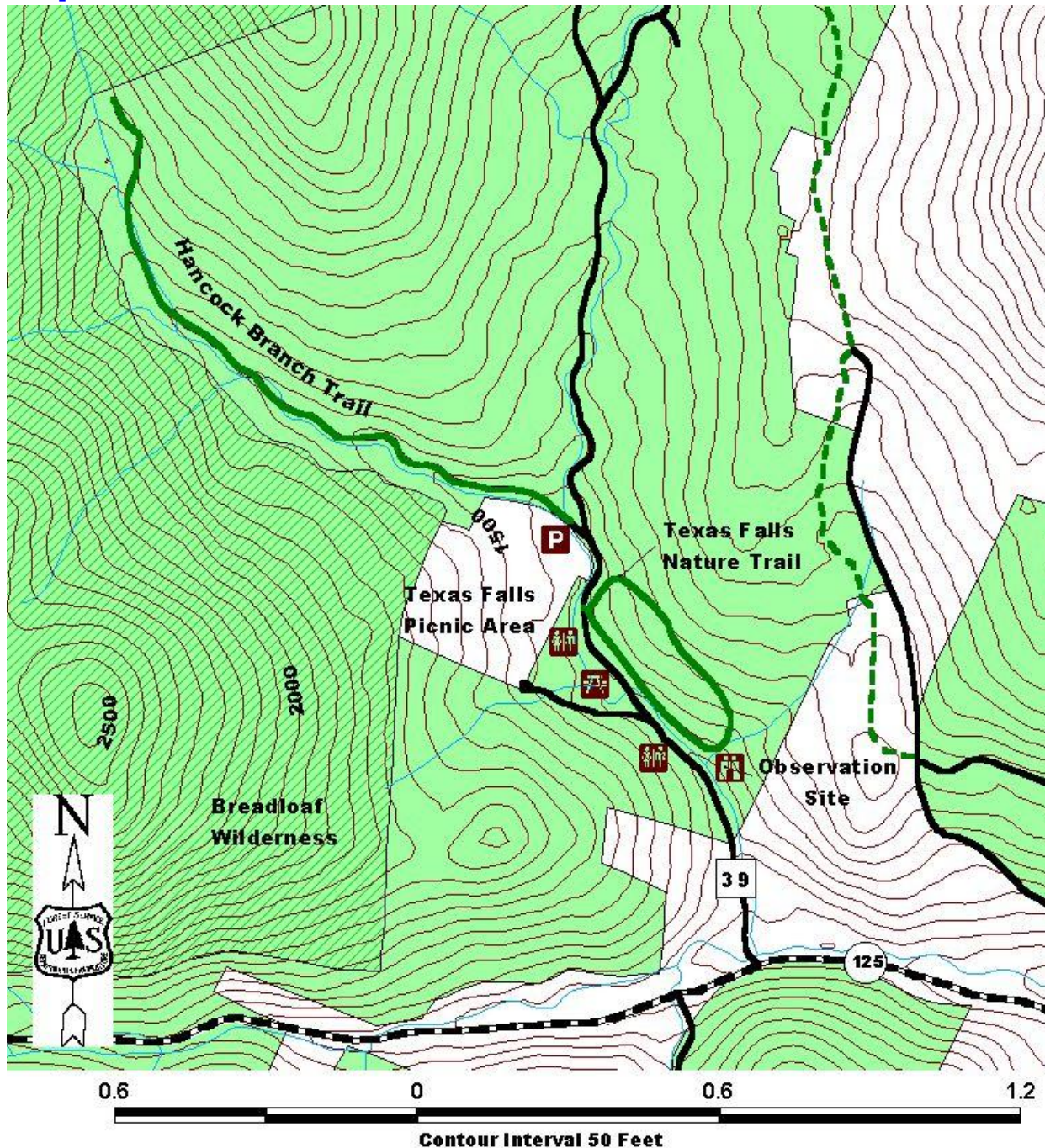
Website: www.fs.fed.us/r9/gmfl

r9_gmfl_webmaster@fs.fed.us

The USDA is an equal opportunity provider and employer.

Area Services:

Food and Services: Rochester restaurants and fuel stations
For all Emergencies: 911
911 Information: The trailhead is in the Town of Hancock, on Forest Road 39

Map:**For More Information:**

Middlebury Ranger District, 1007 Route 7 South, Middlebury, VT 05753, (802) 388-4362

Rochester Ranger District, 99 Ranger Rd., Rochester, VT 05767, (802) 767-4261

This Recreation Guide is Available in Large Print at Forest Service Information Centers

Last modified 3/9/2010