



Green Mountain National Forest

Norske Trail

Caring for the Land and Serving People

Trail Facts:

Length: 4.0 miles round trip	Feature: Woods, Breadloaf Wilderness
Max. Elevation Change: 300 Feet	USGS maps: Breadloaf Quad
Amount of use: Low	Difficulty level: More difficult
Average trip time: 3 – 3 ½ hrs. round trip	

Trail Description:

This trail passes through mixed hardwood/softwood forests and over a variety of terrain as it enters the Breadloaf Wilderness. Much of the trail is gradual ups and downs with several extended elevation changes on the western side of the trail. The trail crosses over one bridge, turns left, and soon takes a sharp right hand turn to the intersection with the Burnt Hill Trail. At the intersection continue straight on the Burnt Hill Trail to Forest Road 59. During the winter months this is an un-groomed ski trail. You can continue your trip by connecting with the Catamount trail on FR 59 or return to Vermont Route 125. The trail begins and ends on private property, please be respectful of the owners. Please practice Leave No Trace ethics, such as Carry Out what you Carry In. Trail blazing, maintenance, and signage will be minimal in Wilderness Areas.

Directions:

From Middlebury, travel south on Route 7 to where it intersects with Route 125. Travel east on Route 125 for 8.8 miles. The parking area is on the left.

From Rochester, travel north on Route 100 to its intersection with Route 125. Travel west on Route 125 for 6.9 miles. The parking area is on the right.

Nearby Destinations and Attractions:

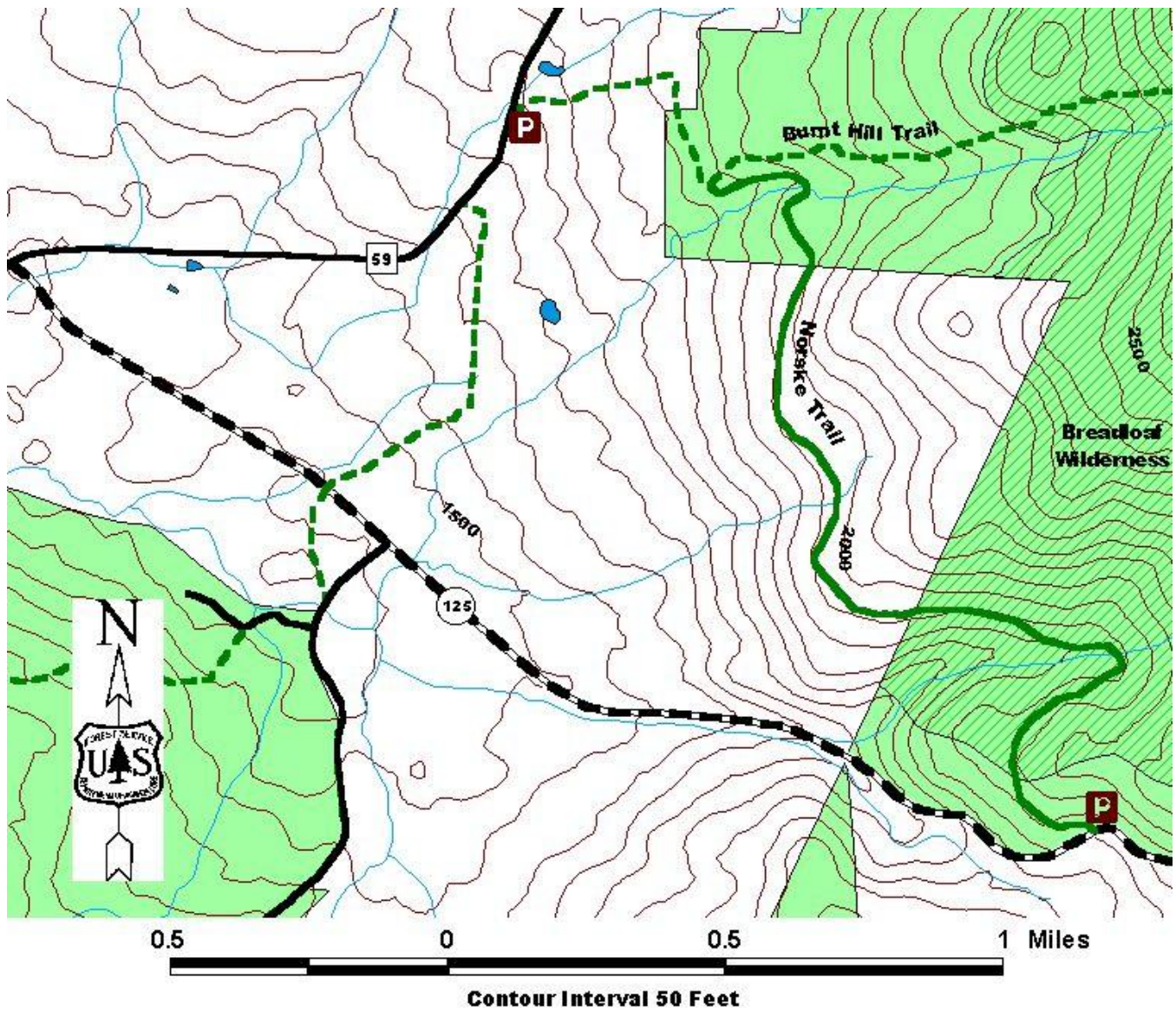
- Catamount Trail
- Water Tower and Wilkinson Cross-Country Ski Trails
- Hancock Branch Cross-Country Ski Trail

Area Services:

Food and Services: Hancock and Middlebury shops and fuel stations
For all Emergencies: 911
911 Information: The trailhead is in the town of Hancock, off Vermont Route 125

 	U.S. Department of Agriculture Forest Service	Green Mountain & Finger Lakes National Forests 231 North Main Street, Rutland, VT 05701 (802) 747-6700 Phone (802) 747-6766 FAX Website: www.fs.fed.us/r9/gmfl r9_gmfl_webmaster@fs.fed.us
----------------------------------------------------------------------------------------------------------------------------------------------------------------------------	--------------------------------------------------------------------	-----------------------------------------------------------------------------------------------------------------------------------------------------------------------------------------------------------------------------------------------------------------------------------------------------------------

The USDA is an equal opportunity provider and employer.

Map:**For More Information:**

Middlebury Ranger District, 1007 Route 7 South, Middlebury, VT 05753, (802) 388-4362
Rochester Ranger District, 99 Ranger Rd., Rochester, VT 05767, (802) 767-4261

This Recreation Guide is Available in Large Print at Forest Service Information Centers

Last modified 02/02/10