



Green Mountain National Forest

Contest Trail

Caring for the Land and Serving People

Trail Facts:

Length: 3.25 miles round trip	Feature: Views, Woods, Meadows
Max. Elevation Change: 700 feet	USGS maps: Rochester Quad
Amount of use: Light	Difficulty level: Difficult
** Liberty Hill- Contest Trail Loop	

Trail Description:

The parking lot is on the left side of the road at the bulletin board on Forest Road (FR) 223/ Liberty Hill Road. During the winter Liberty Hill road is not maintained. This is no parking at the trail head, the trail head starts 0.5 miles up FR 223/ Liberty Hill Road. Much of the trail follows old woods roads. Near the southern end, the trail passes through Mayo meadow with spectacular views. Please stay on the trail through the field. To complete the loop, take a right onto FR 223/ Liberty Hill road and continue back to the parking lot. The total distance is 3.25 miles and the maximum elevation change is 700 feet.

Directions:

From Rochester, travel south on Route 100 1.8 miles past the junction of Routes 100 and 73. Turn right onto Liberty Hill Road (Forest Road 223). The parking lot is at 1.8 miles on the left.

From Pittsfield, travel north on Route 100 6.0 miles past the junction on Routes 100 and 107. Turn left onto Liberty Hill Road (Forest Road 223). The parking lot is at 1.8 miles on the left.

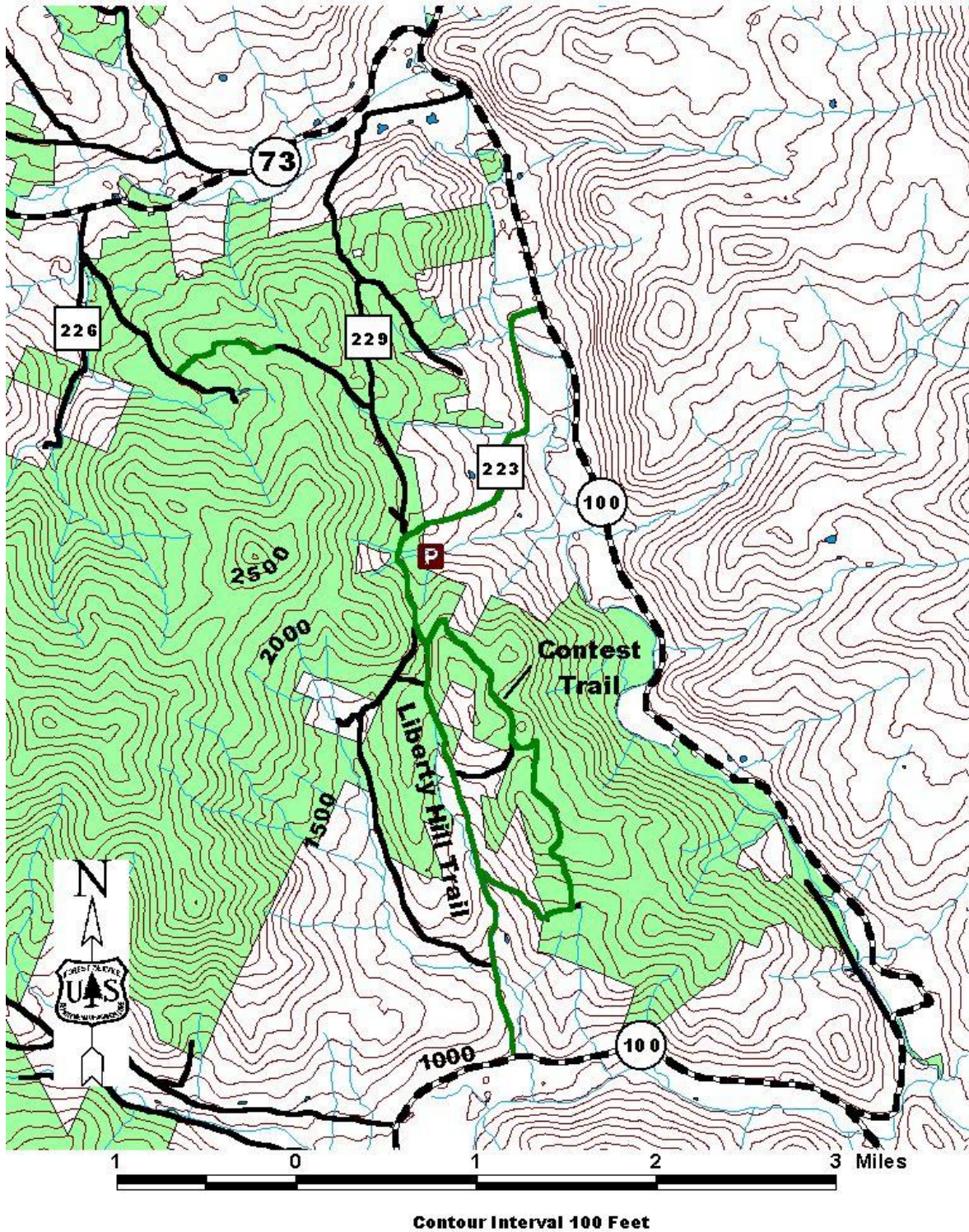
Area Services:

Food and Services: Rochester restaurants and fuel stations
For all Emergencies: 911
911 Information: The trailhead is in the town of Pittsfield, off Forest Road 223 (Liberty Hill)

 U.S. Department of Agriculture  Forest Service	Green Mountain & Finger Lakes National Forests 231 North Main Street, Rutland, VT 05701 (802) 747-6700 Phone (802) 747-6766 FAX Website: www.fs.fed.us/r9/gmfl r9_gmfl_webmaster@fs.fed.us
--	---

The USDA is an equal opportunity provider and employer.

Map:



For More Information:

Middlebury Ranger District, 1007 Route 7 South, Middlebury, VT 05753, (802) 388-4362
Rochester Ranger District, 99 Ranger Rd., Rochester, VT 05767, (802) 767-4261

This Recreation Guide is Available in Large Print at Forest Service Information Centers

Last modified 11/3/06