



Green Mountain National Forest

Ash Hill Trail

Caring for the Land and Serving People

Trail Facts:

Length: 8.5 miles round trip	Feature: Views, Woods, Meadows
Max. Elevation Change: 800 feet	USGS maps: Rochester Quad
Amount of use: Light	Difficulty level: Difficult
Average bike trip time: 2.5 hours	

Trail Description:

The trail follows FR 229 for 0.5 mile, then branches off to the left at a signed trail intersection. Follow the blazes through an abandoned field, then through the woods to a series of old meadows. The trail then descends steeply to Corporation Road. You can turn around before the steep descent or complete the loop. Follow Corporation Road to Route 73, then go east on Route 73 to Route 100. Take Route 100 south to Liberty Hill Rd., then climb up Liberty Hill Road to the parking lot. The total distance is 8.5 miles and the maximum elevation change is 800 feet. **The suggested direction of travel is from the Liberty Hill parking area to Corporation Road.**

Directions:

From Rochester, travel south on Route 100 1.8 miles past the junction of Routes 100 and 73. Turn right onto Liberty Hill Road (Forest Road 223). The parking lot is at 1.8 miles on the left.

From Pittsfield, travel north on Route 100 6.0 miles past the junction on Routes 100 and 107. Turn left onto Liberty Hill Road (Forest Road 223). The parking lot is at 1.8 miles on the left.

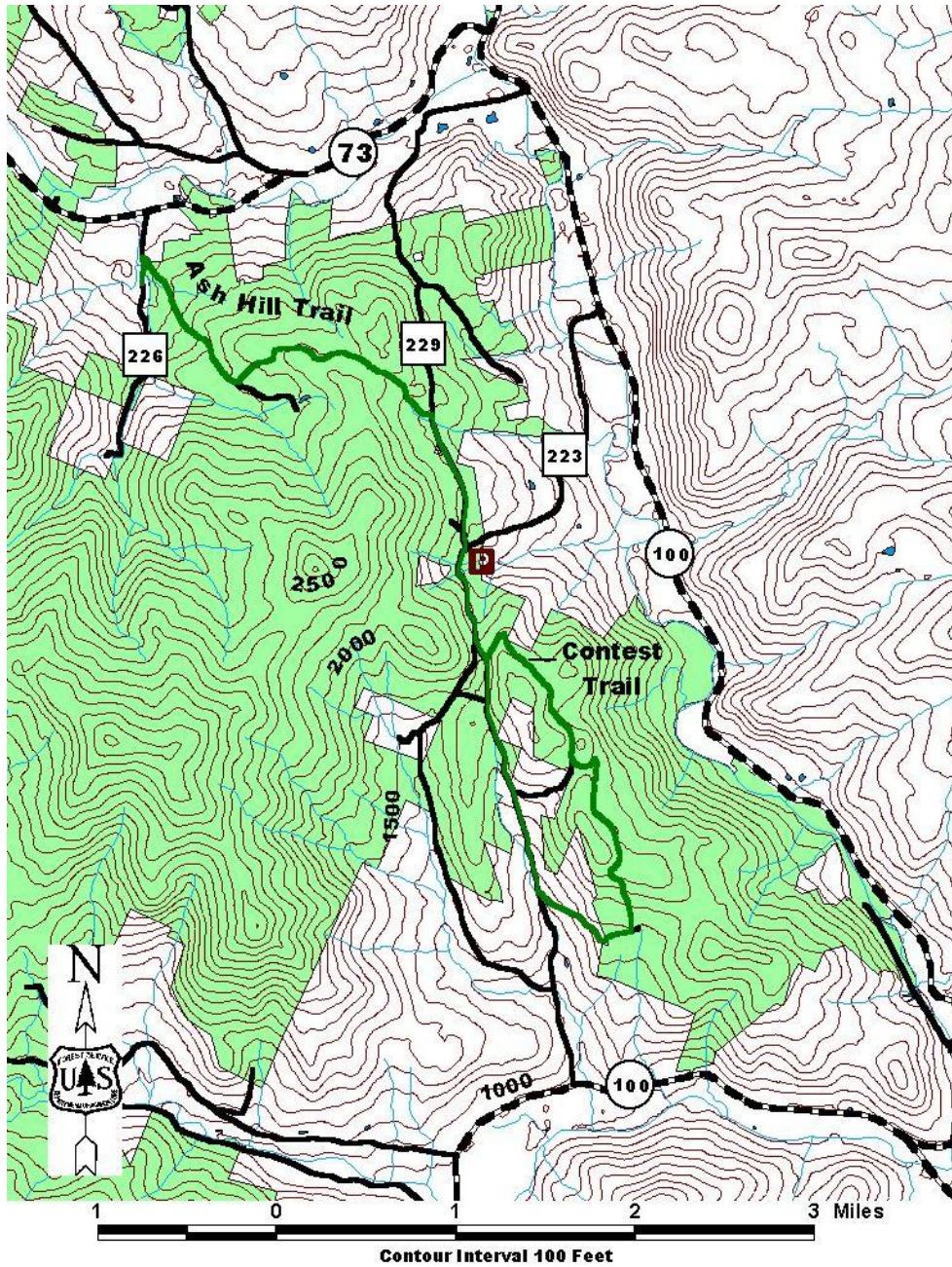
Area Services:

Food and Services: Rochester shops and fuel stations
For all Emergencies: 911
911 Information: The trailhead is in the town of Pittsfield, off Forest Road 223 (Liberty Hill)

 	U.S. Department of Agriculture Forest Service	Green Mountain & Finger Lakes National Forests 231 North Main Street, Rutland, VT 05701 (802) 747-6700 Phone (802) 747-6766 FAX Website: www.fs.fed.us/r9/gmfl r9_gmfl_webmaster@fs.fed.us
--	--	---

The USDA is an equal opportunity provider and employer.

Map:



For More Information:

Middlebury Ranger District, 1007 Route 7 South, Middlebury, VT 05753, (802) 388-4362
Rochester Ranger District, 99 Ranger Rd., Rochester, VT 05767, (802) 767-4261

This Recreation Guide is Available in Large Print at Forest Service Information Centers

Last modified 4/11/07