

Figure 1. Locations on the Manchester District of the GMNF in which release and maintenance of apple trees is authorized. Figures 2 through 10 provide greater detail for each area.

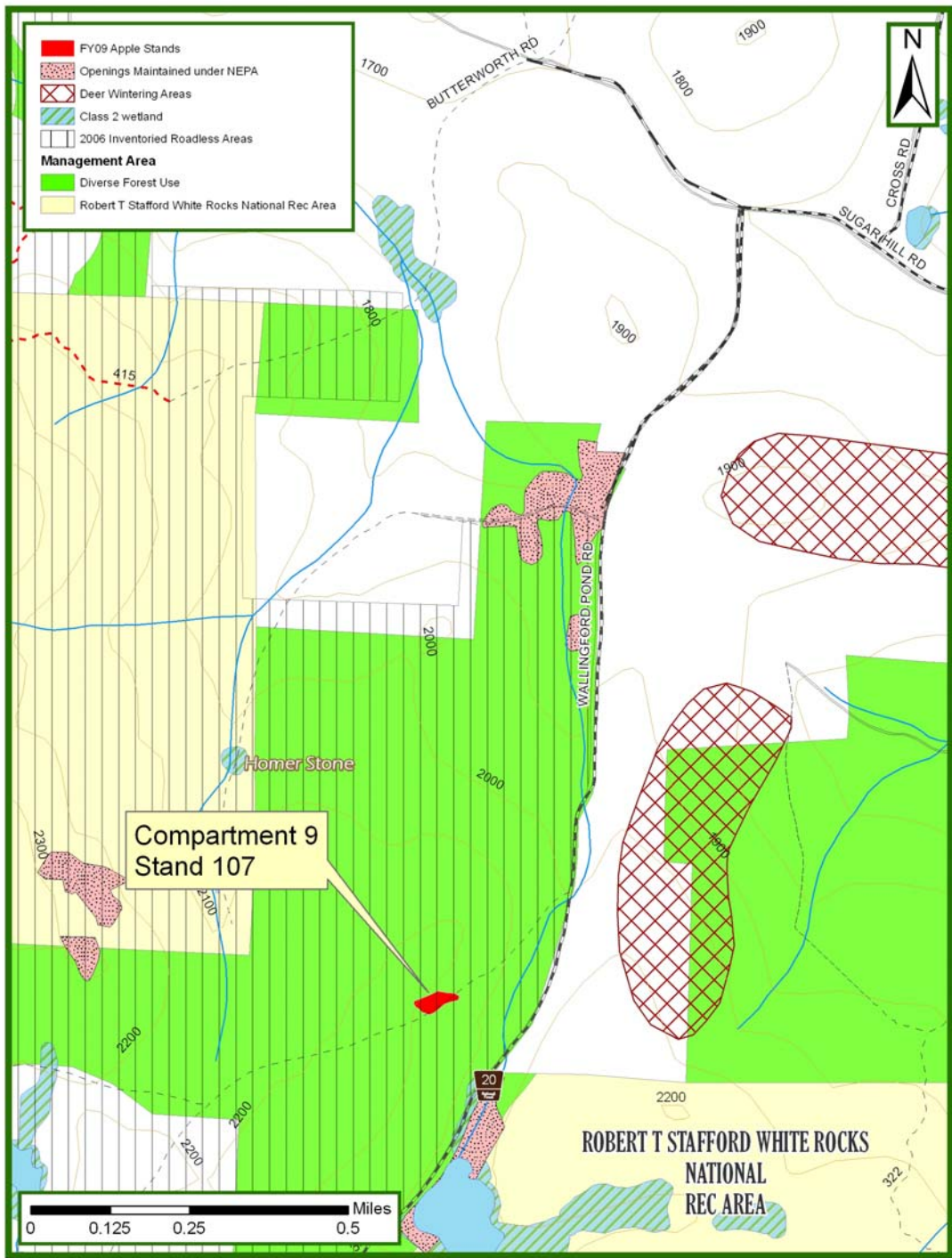


Figure 2. Detail for Compartment 9 Stand 107.

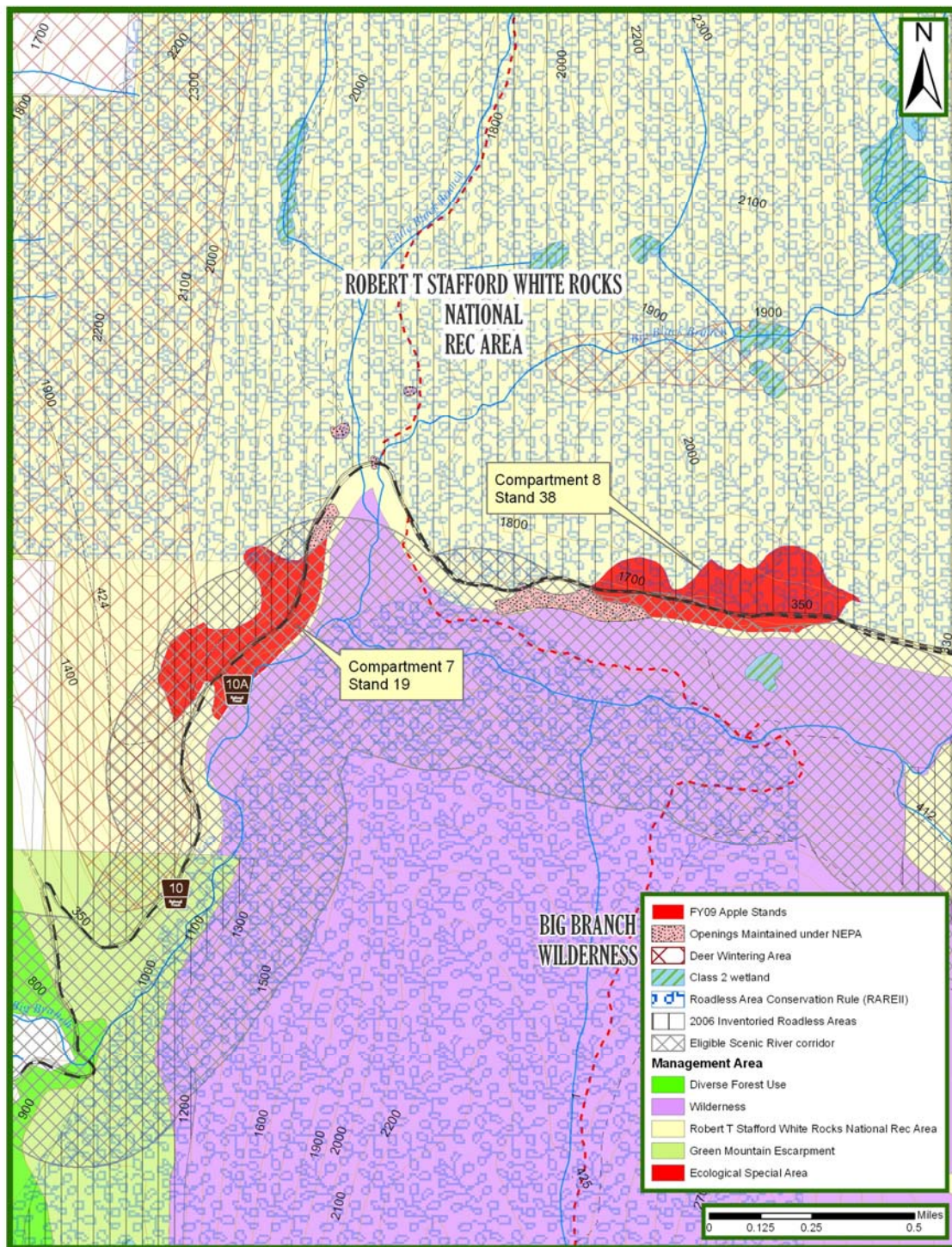


Figure 3. Detail for Compartment 7 Stand 19 and Compartment 8 Stand 38.

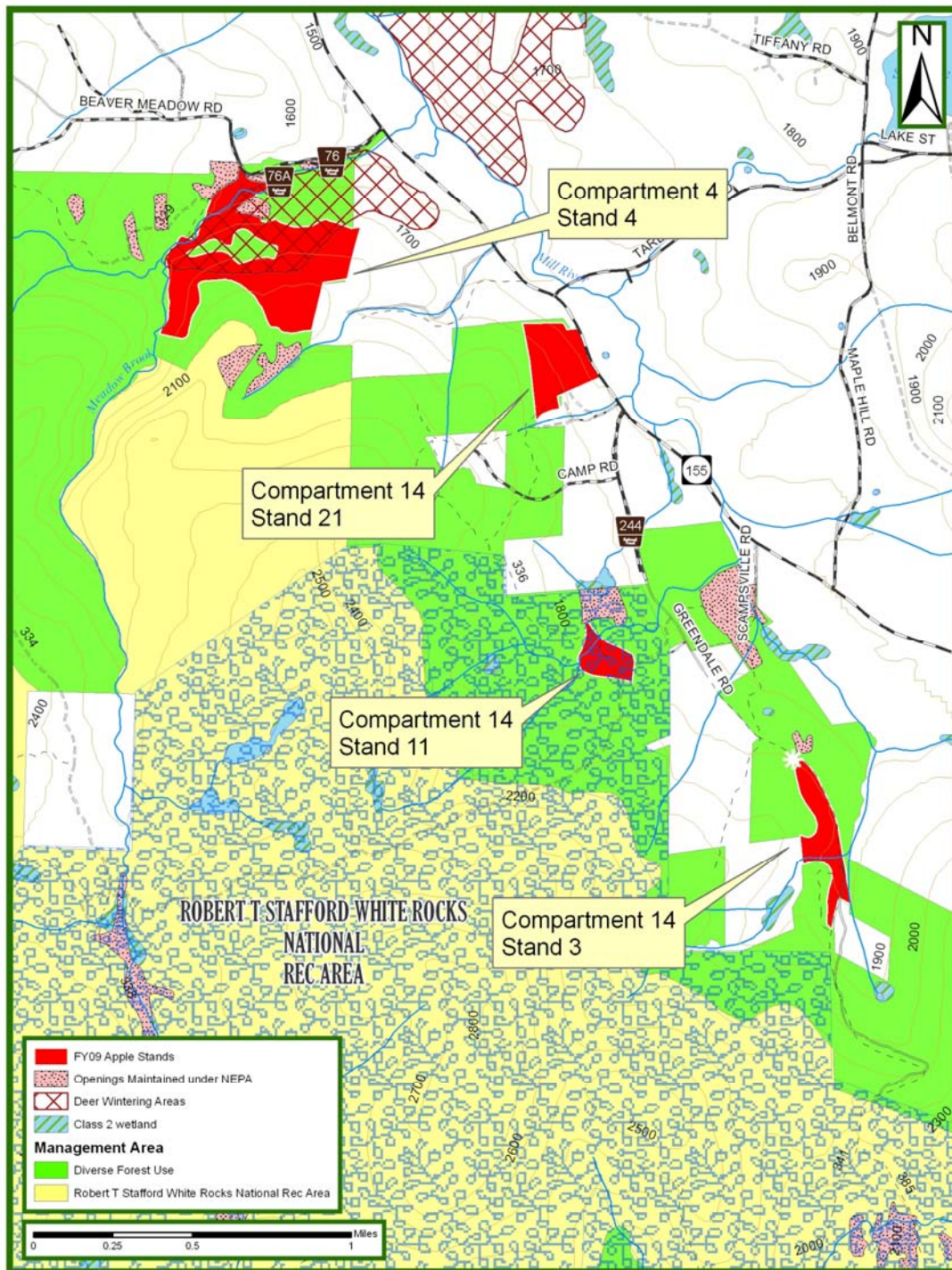


Figure 4. Detail for Compartment 4 Stand 4 and Compartment 14 Stands 3, 11, and 21.

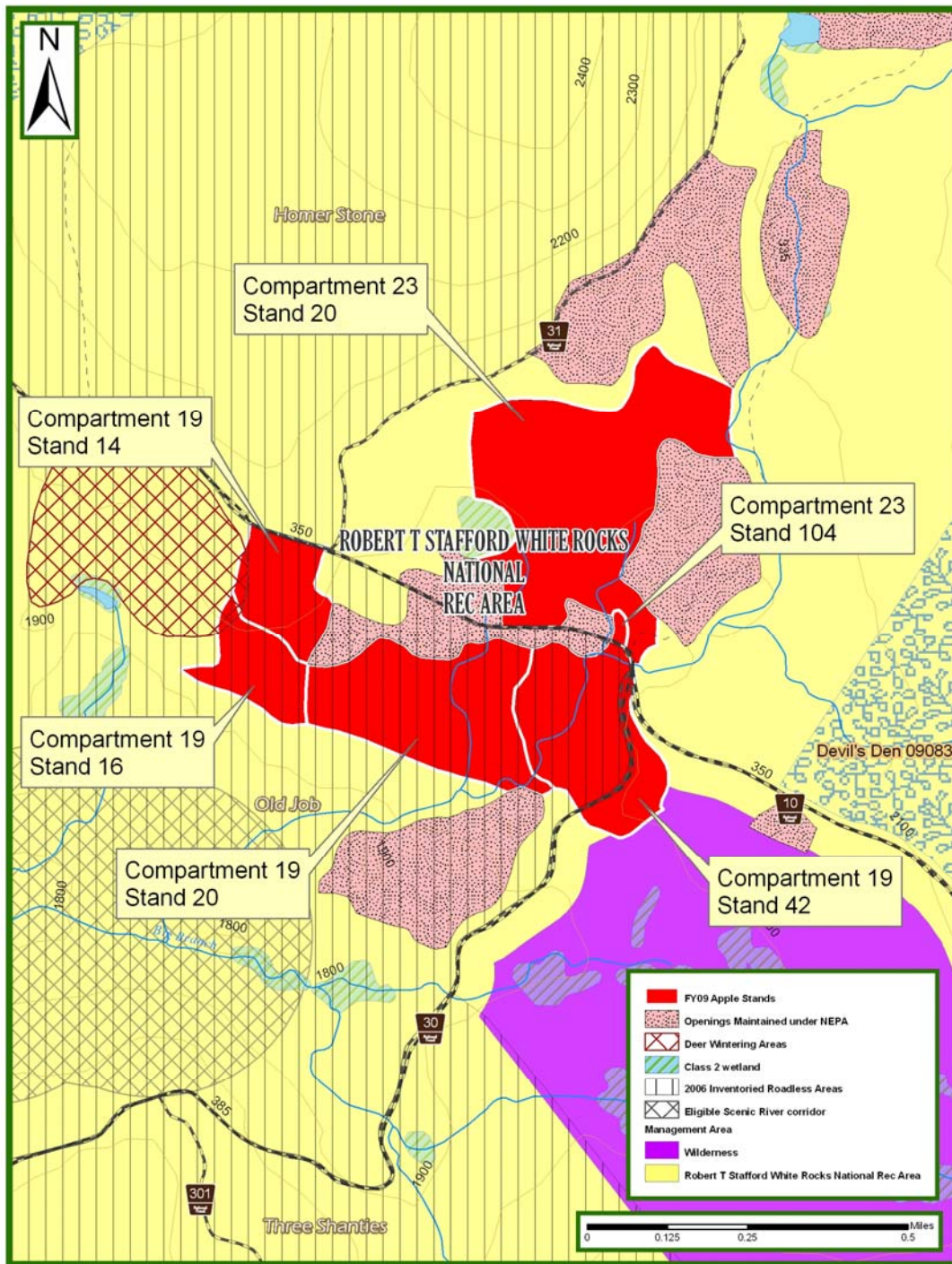


Figure 5. Detail for Compartment 19 Stands 14, 16, 20, and 42, and Compartment 23 Stands 20 and 104.

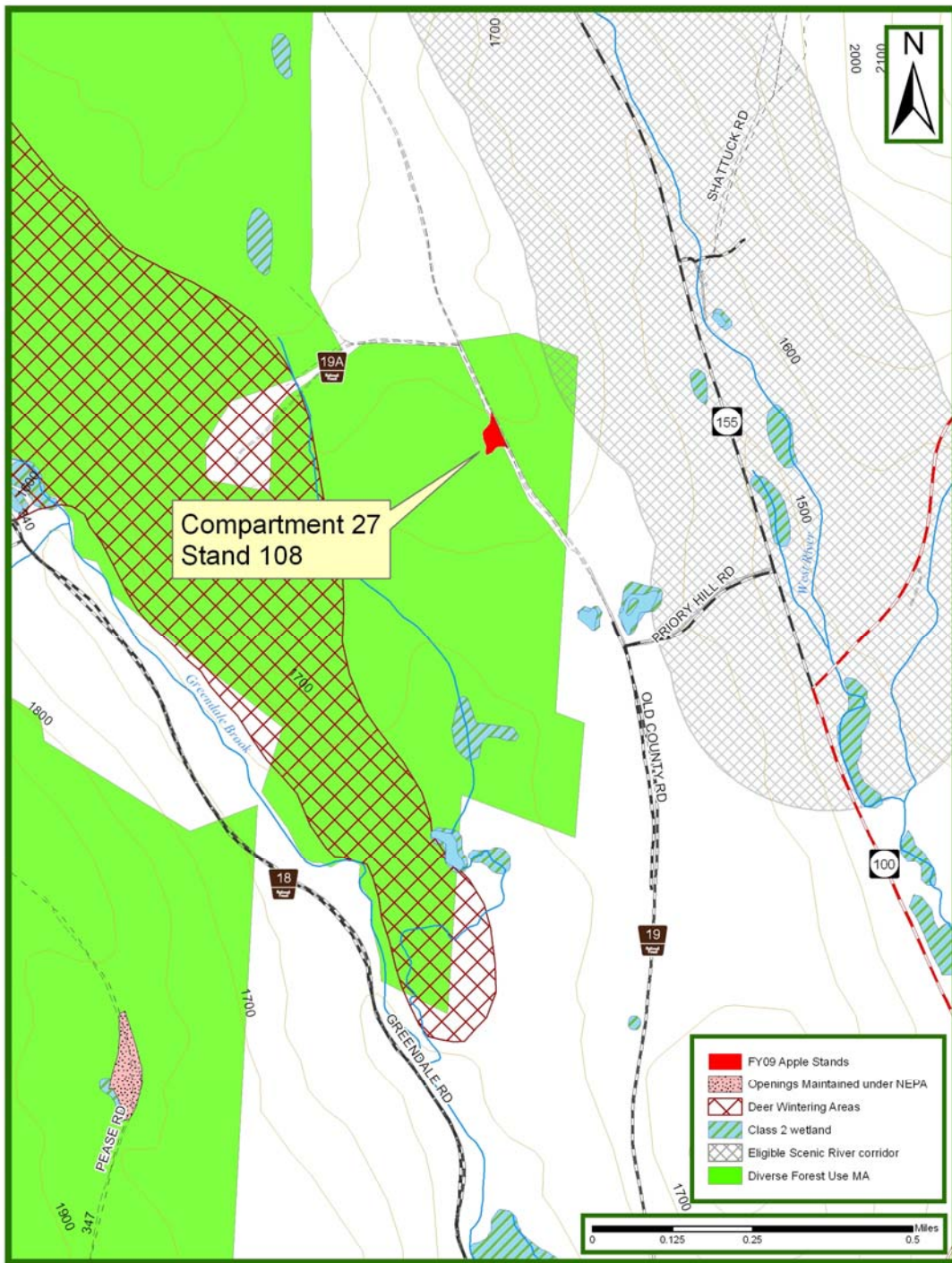


Figure 6. Detail for Compartment 27 Stand 108.

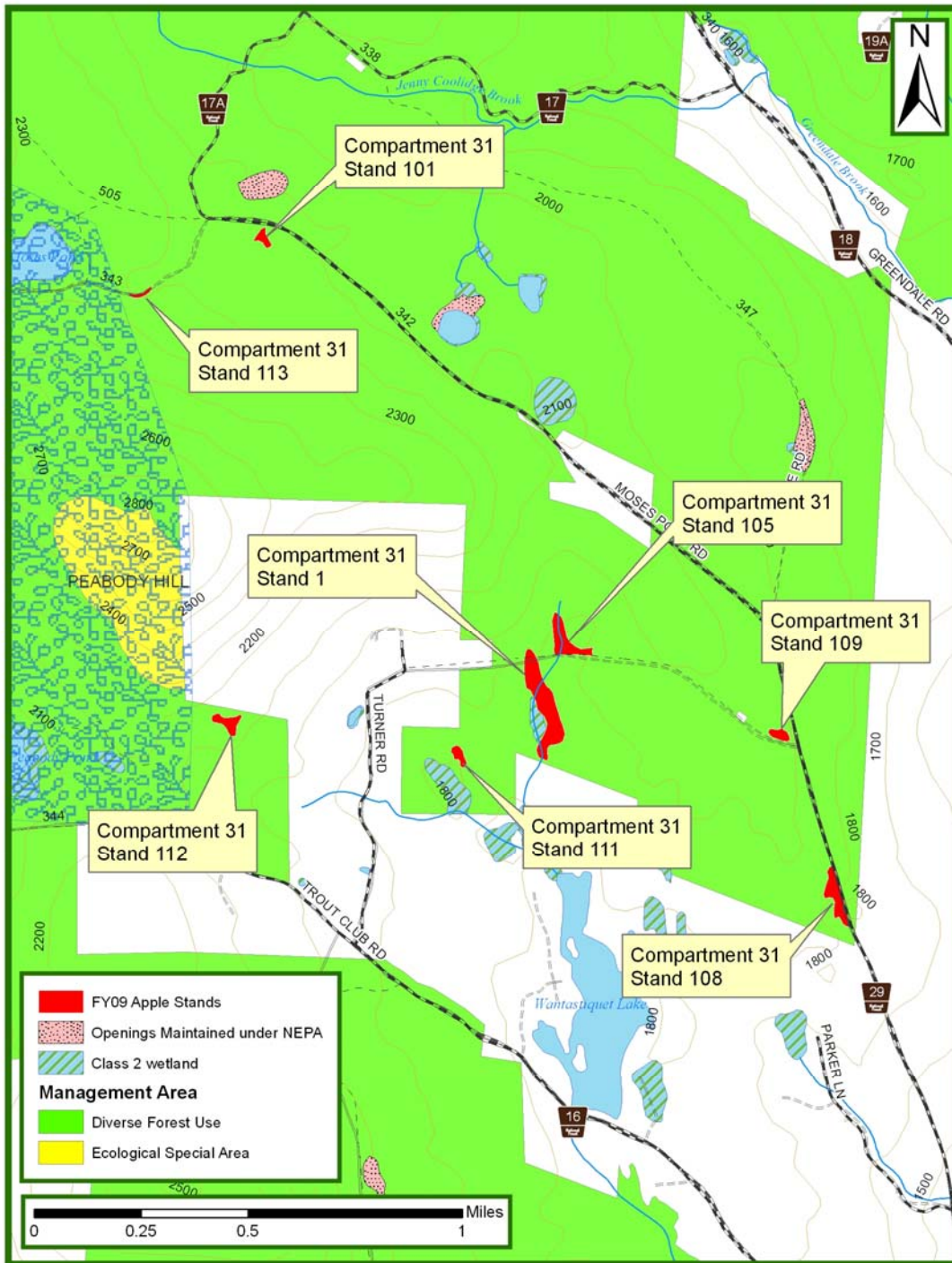


Figure 7. Detail for Compartment 31 Stands 1, 101, 105, 108, 109, 111, 112, and 113.

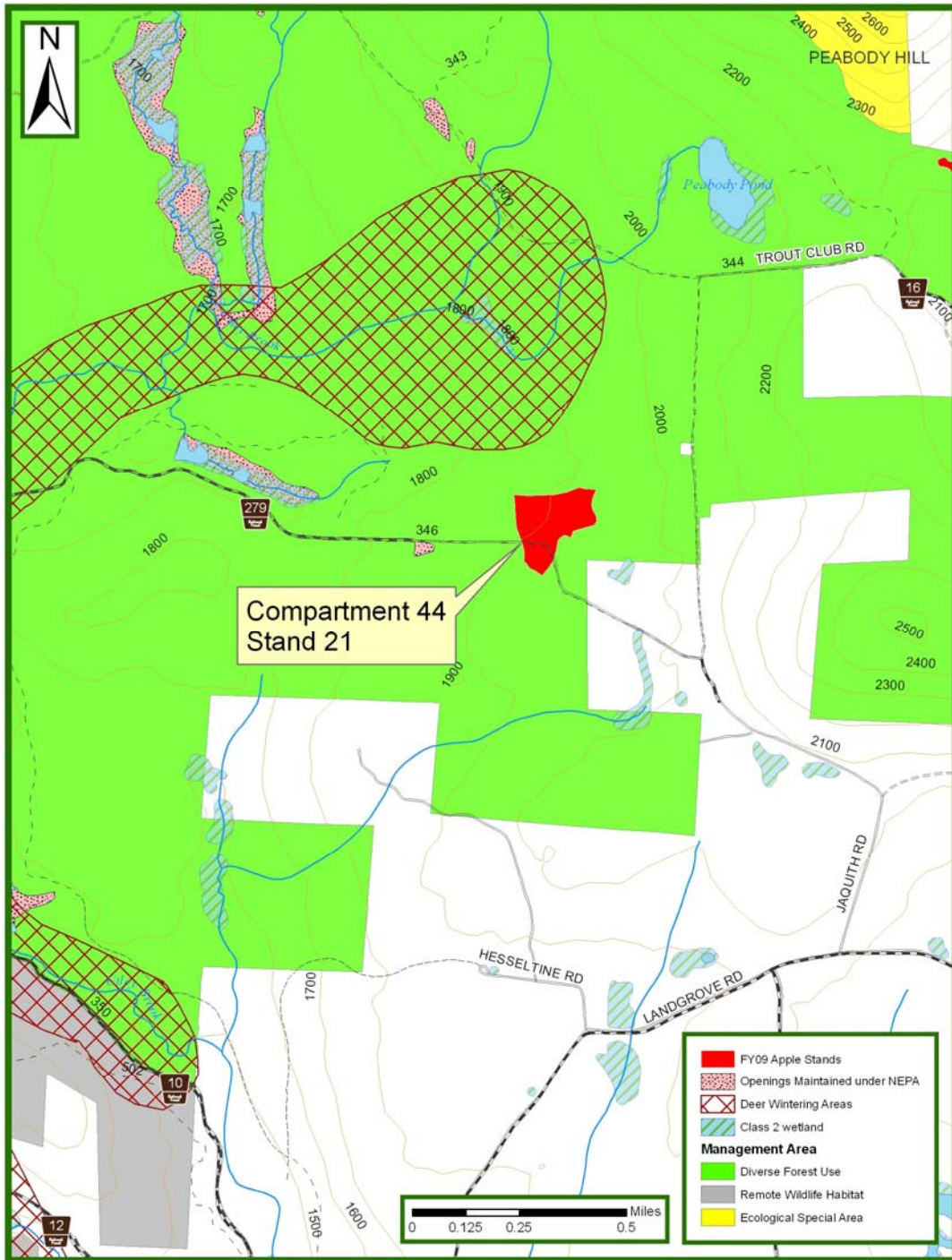


Figure 8. Detail for Compartment 44 Stand 21.

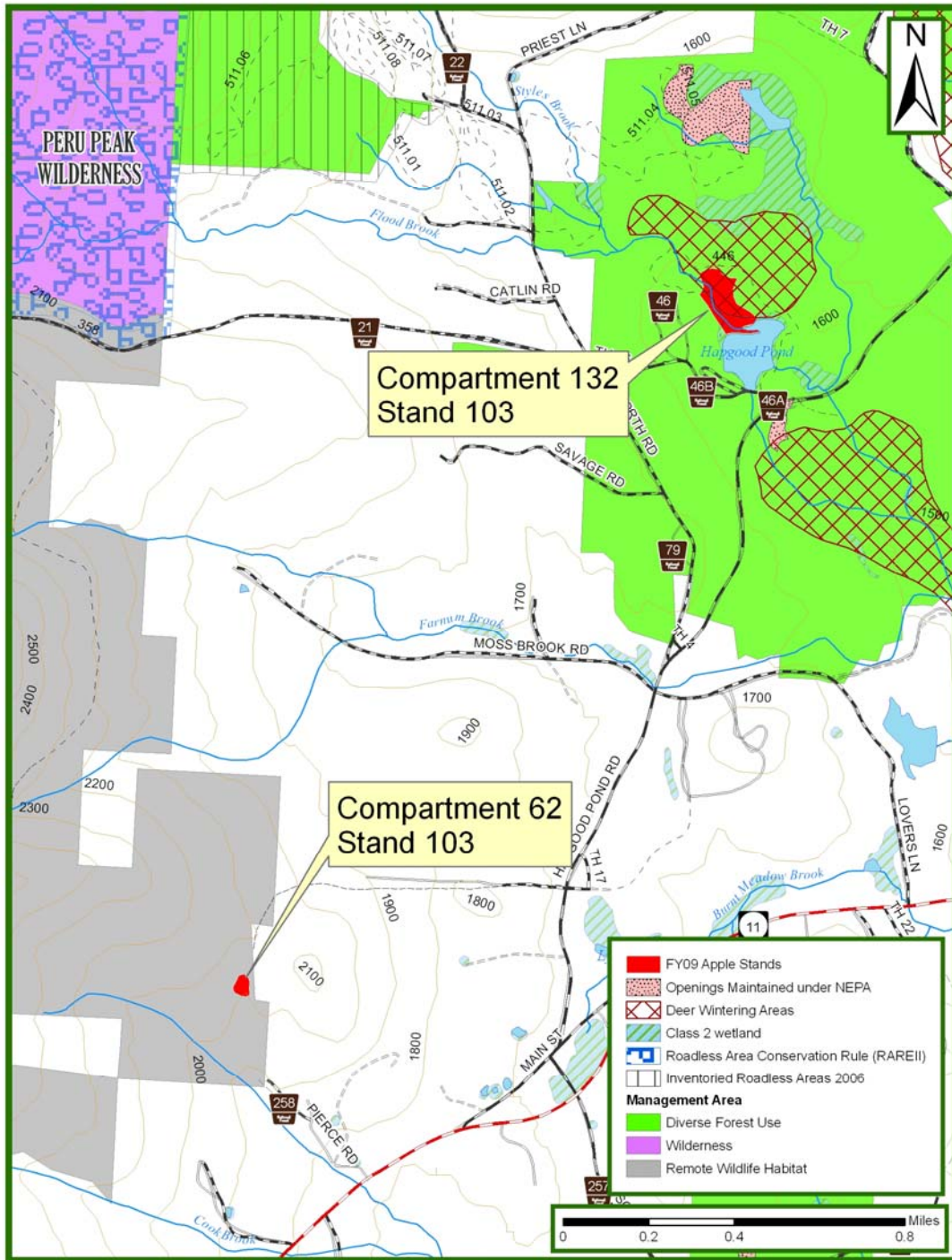


Figure 9. Detail for Compartment 62 Stand 103 and Compartment 132 Stand 103.

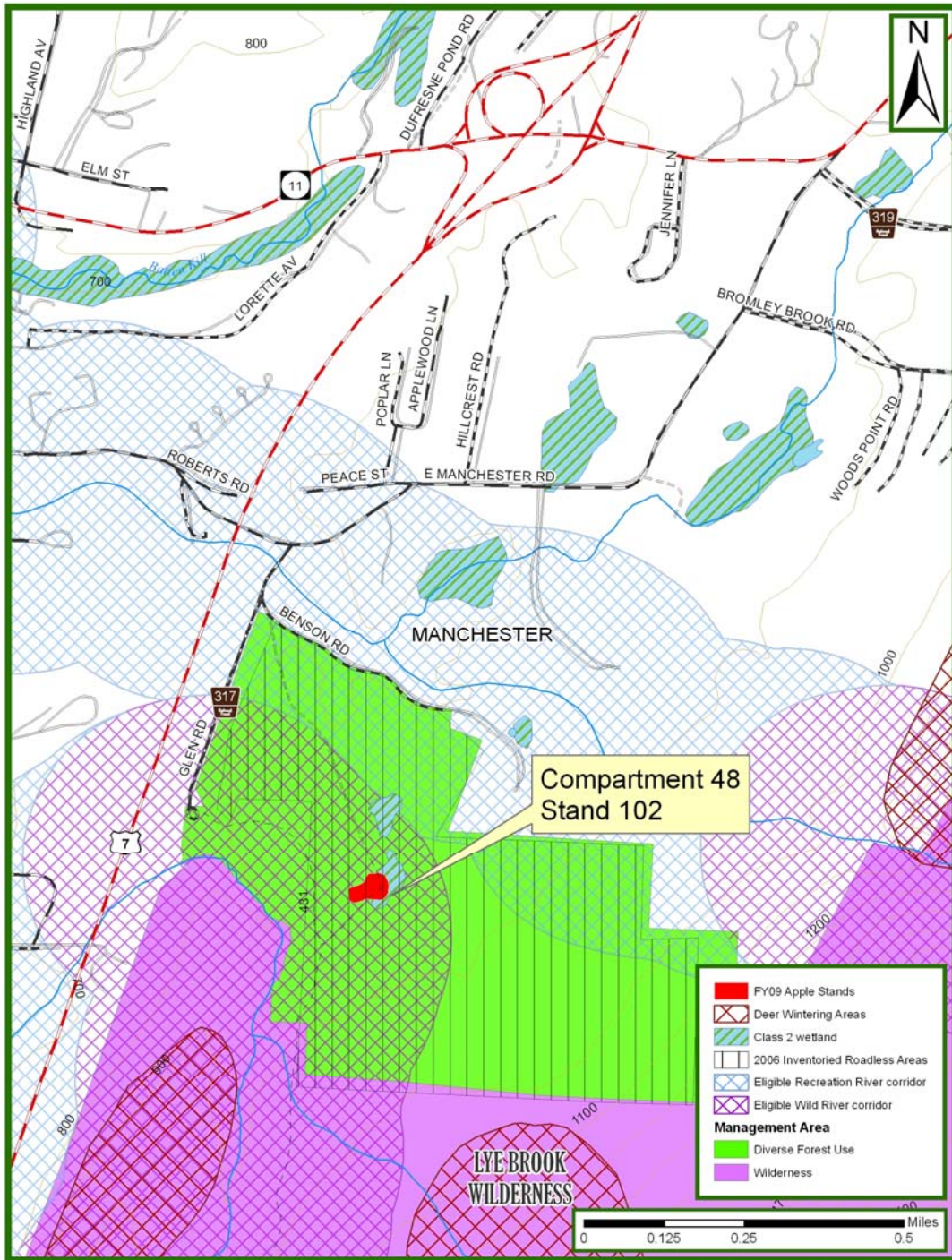


Figure 10. Detail for Compartment 48 Stand 102.