

Laurel Wilt: Insect Vector - *Xyleborus glabratus*



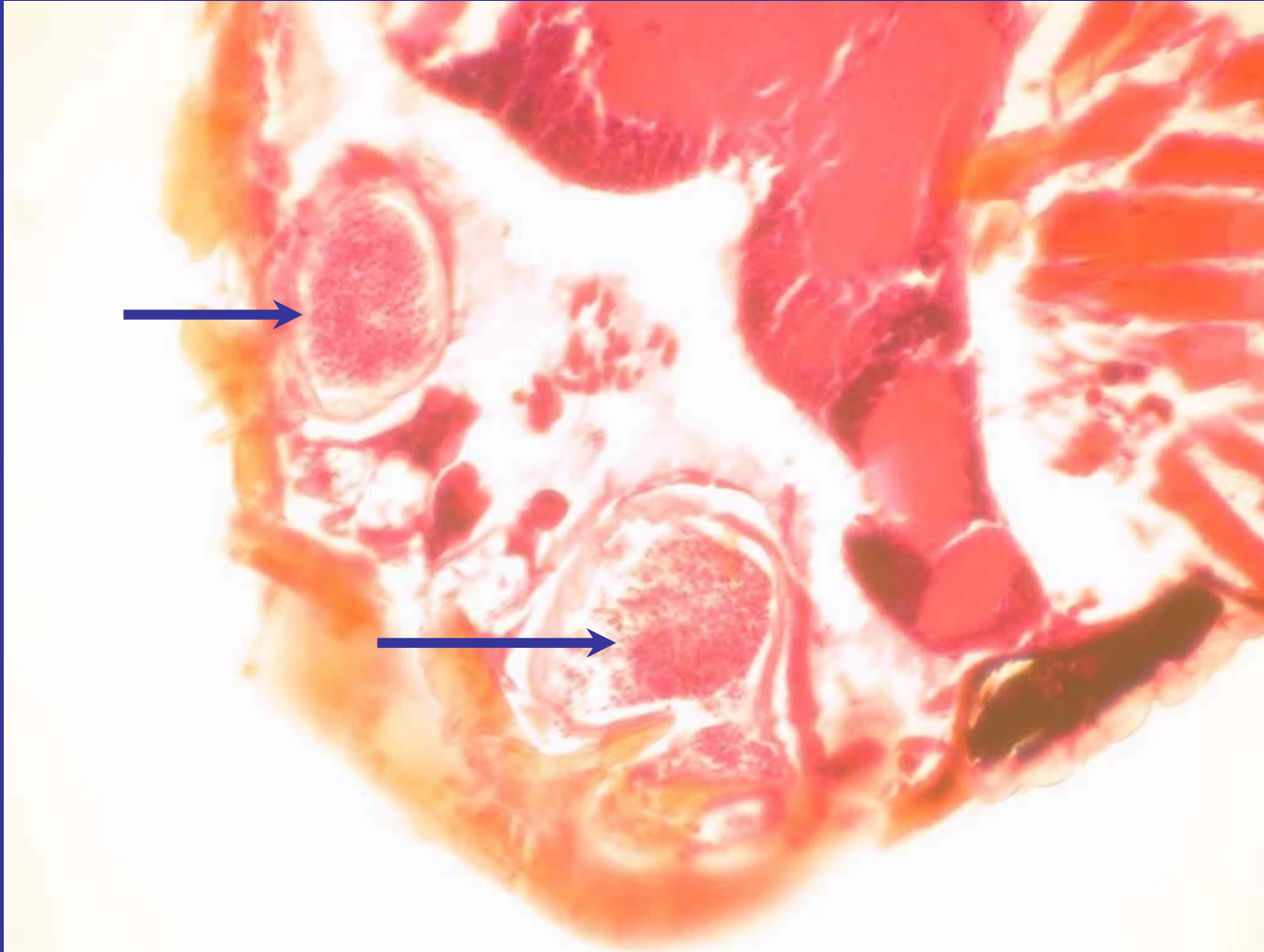
Stephen Fraedrich
USDA Forest Service
Athens, GA



The ambrosia beetle, Xyleborus glabratus, was first identified from redbay samples from Hilton Head Island (SC) by Dr. Robert Rabaglia in December, 2004.

Photograph by Mike Thomas
(Florida Department of Agriculture &
Consumer Services)

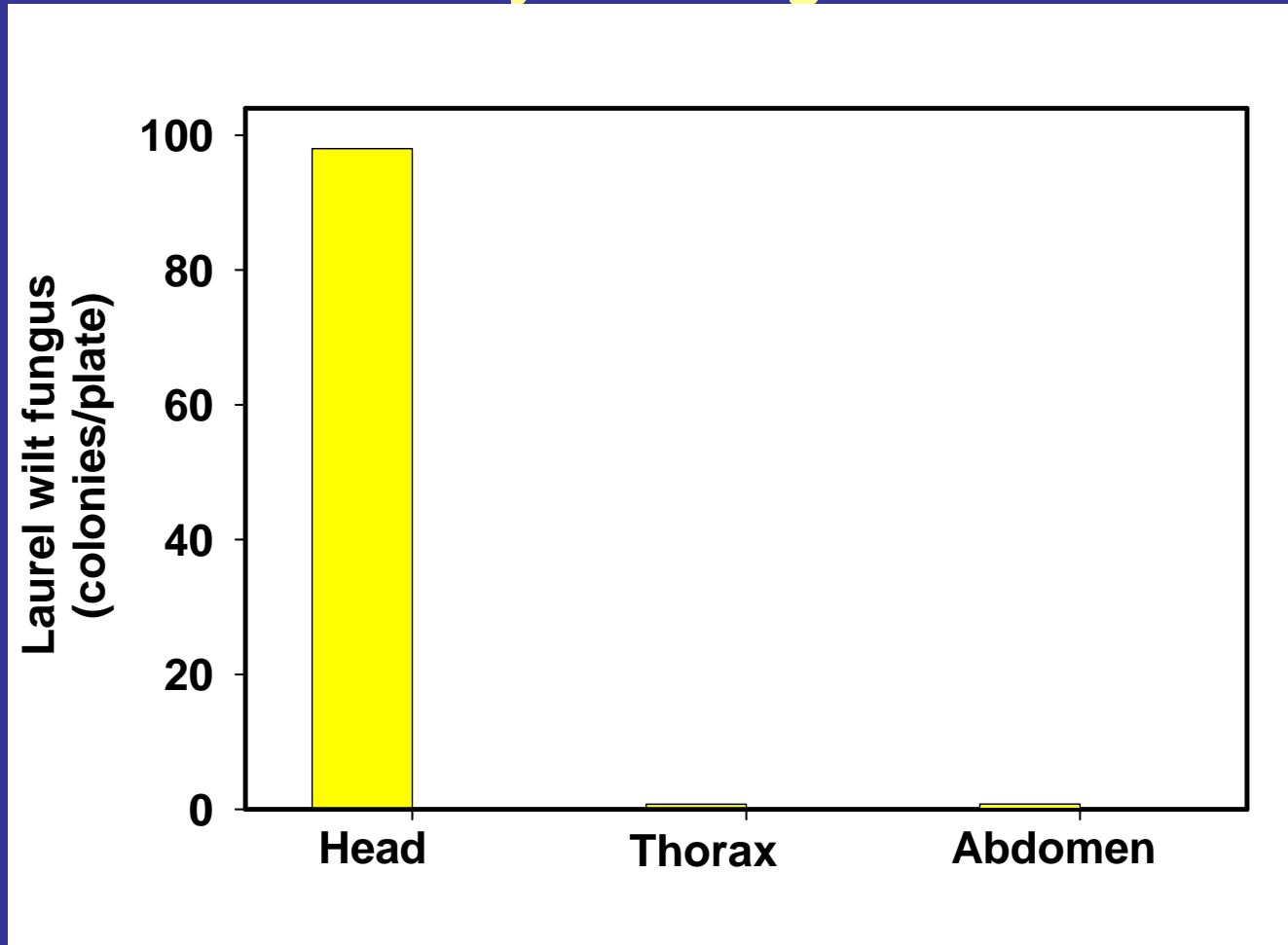
Mycangia of *Xyleborus glabratus*



Section by Mike Ulyshen (USFS and Department of Entomology, UGA)

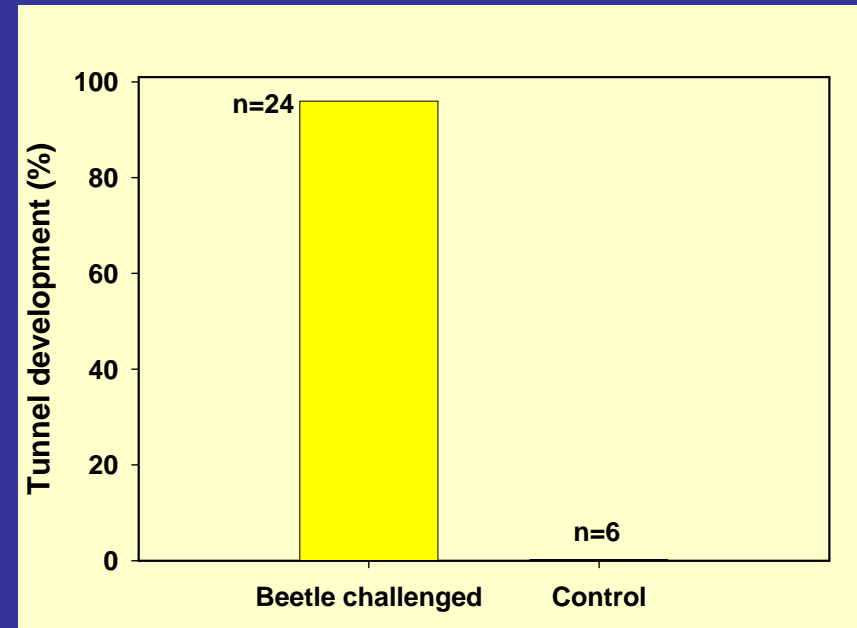
*The mycangia (arrows) of *Xyleborus glabratus* are located in the head of beetles behind the mandibles*

Results of dilution plating of body sections from *Xyleborus glabratus*



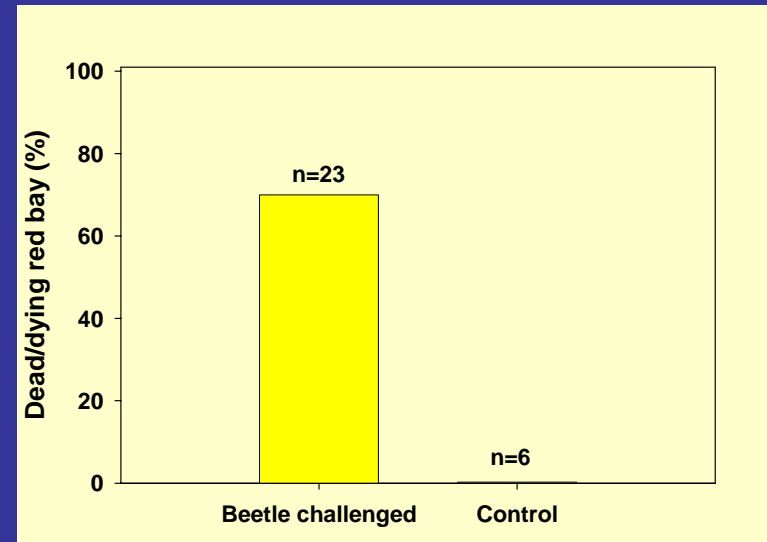
The Raffaelea sp. responsible for laurel wilt is consistently isolated from the heads of Xyleborus glabratus.

Redbay plants challenged with *Xyleborus glabratus*



- Beetles initiated tunnels into 23 of 24 red bay plants

Redbay challenged with *Xyleborus glabratus* after 7 weeks



- 16 of 23 redbay wilted
- All dead and dying redbay had vascular discoloration
- *Raffaelea* sp. was recovered from all dead and dying redbay