

Oklahoma



Forest Health Highlights

2007

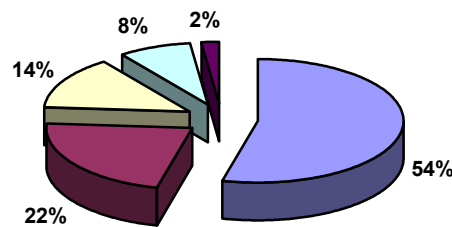
The Resource

Oklahoma's forests cover 10 million acres, about 20% of the state's land area. Some 6.9 million acres of the states forested land is in ownership, while are in national forest. prized for their scenic and outdoor recreation and throughout the state. Major include oak-hickory, mixed oak-pine, and oak-



nonindustrial private approximately 397,000 acres Oklahoma's forests are beauty, supporting tourism providing wildlife habitat forest types in the state loblolly and shortleaf pine, gum-cypress.

Oklahoma Forest Type Distribution



- Oak-hickory
- Loblolly-shortleaf pine
- Oak-pine
- Elm-ash-cottonwood
- Oak-gum-cypress

Forest Influences and Programs

Ice storms were the major forest damage event in Oklahoma in 2007. Two storms afflicted the state, one in January and another in December. The January storm caused major damage to trees from McAlester to Muskogee to Grove creating a major clean-up chore for many communities. The December storm cause major tree damage from Chickasha to Norman, Oklahoma City to Tulsa and left over 600,000 people with out electricity—the most in Oklahoma history. Both storms affected portions of the state dominated by hardwoods with the biggest impact occurring on urban forests.

The forests and trees of northeast Oklahoma were subjected to a **late spring frost** in 2007 killing much of the newly-emerged foliage and forcing the re-growth of leaves. Oak flowers were killed portending a poor white oak acorn crop in the fall of 2007 and a poor red oak acorn crop in the fall of 2008 (since red oaks pollinate two years before the acorn crop matures).



Rainfall was another big issue in the state in 2007; following 2 years of drought the stat experienced record-setting rainfall. Although damage to forests and trees was likely minimal, the extremes of environment that trees must endure in Oklahoma is wide indeed and stress is a common, annual condition.

Walkingsticks occasionally cause noticeable defoliation in hardwood forests and a 3,000 acre event occurred in 2007 along a single ridge in Pushmataha County. No tree mortality is expected since walkingstick defoliation occurs late in the summer when damage to trees is minimal.

Southern pine beetle (SPB) was absent from Oklahoma again in 2007, the **Xth** year with no activity. Spring trapping did not recover any beetles, either.

Forest Health Assistance in Oklahoma

Oklahoma Department of Agriculture
Forestry Services
2800 N. Lincoln Blvd.
Oklahoma City, OK 73105
405-522-6158
smattax@oda.state.ok.us
<http://www.forestry.ok.gov/>

USDA Forest Service
Southern Region, State & Private Forestry
Forest Health Protection
2500 Shreveport Hwy.
Pineville, LA 71360
318-473-7286
<http://www.fs.fed.us/r8/foresthealth/>