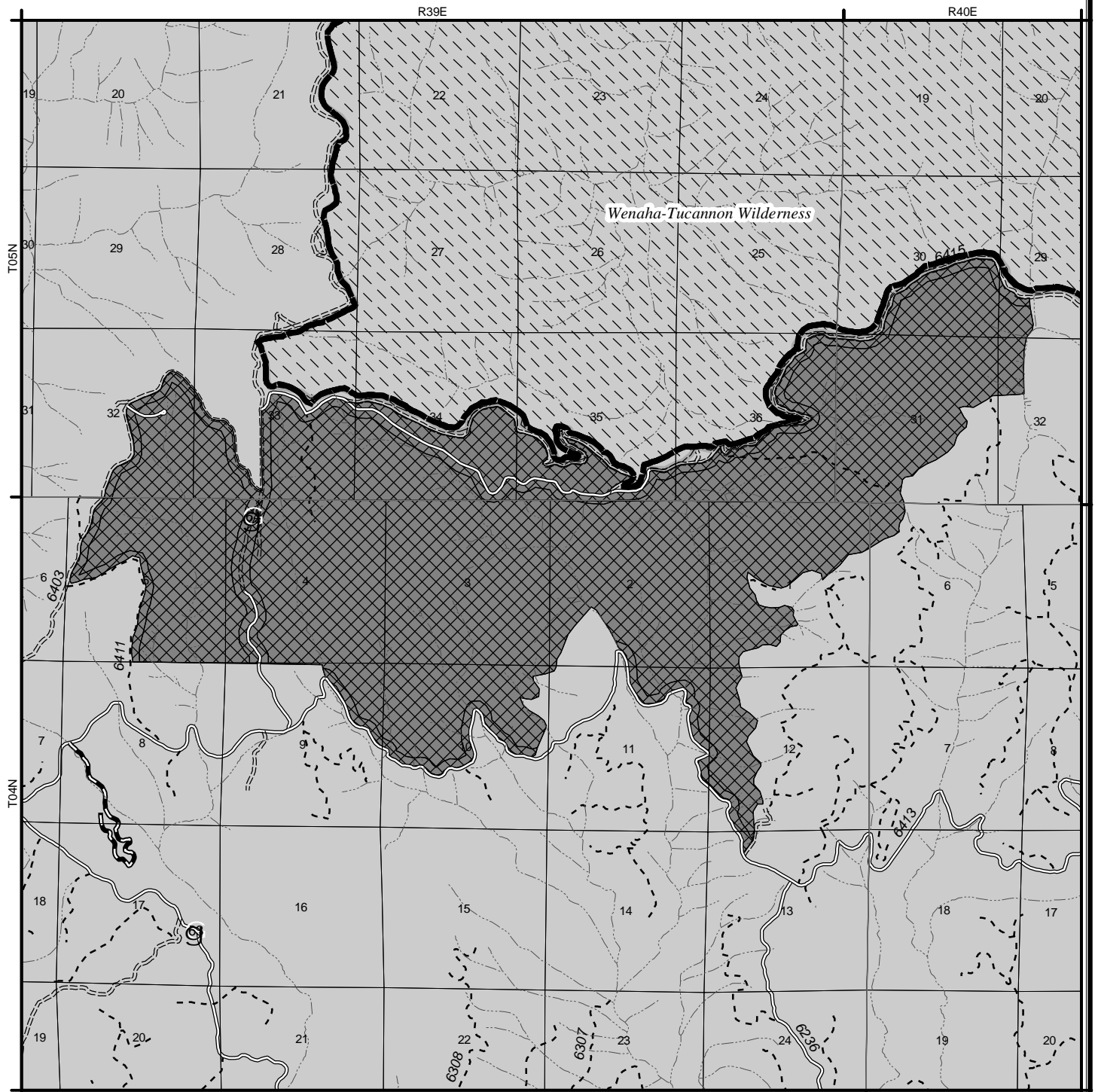



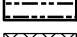
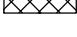


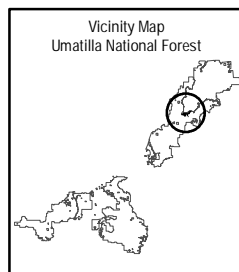


# Inventory of Areas with Wilderness Potential Jaussaud Corral



-  National Forest/District Boundary
-  Wilderness Area
-  \*1990 Forest Plan Roadless Area
-  Added-2008 Inventory
-  Dropped-2008 Inventory
-  State Line
-  Stream/River



**\*As amended by the Roadless Area Conservation Rule (2001)**

This product is reproduced from geospatial information prepared by the U.S. Department of Agriculture Forest Service. GIS data and product accuracy may vary. They may be developed from sources of differing accuracy, accurate only at certain scales, based on modeling or interpretation, incomplete while being created or revised, etc. Using GIS products for purposes other than those for which they were created may yield inaccurate or misleading results. The Forest Service reserves the right to correct, update, modify, or replace GIS products without notification.  
Produced by Dee A. McCombell  
File path is (C:\gis\revision\map\slra\_mapsluma\_PotWildx11.mxd) 8/1/2008  
Rb: Albers Equal Area Projection, North American Datum 1983

