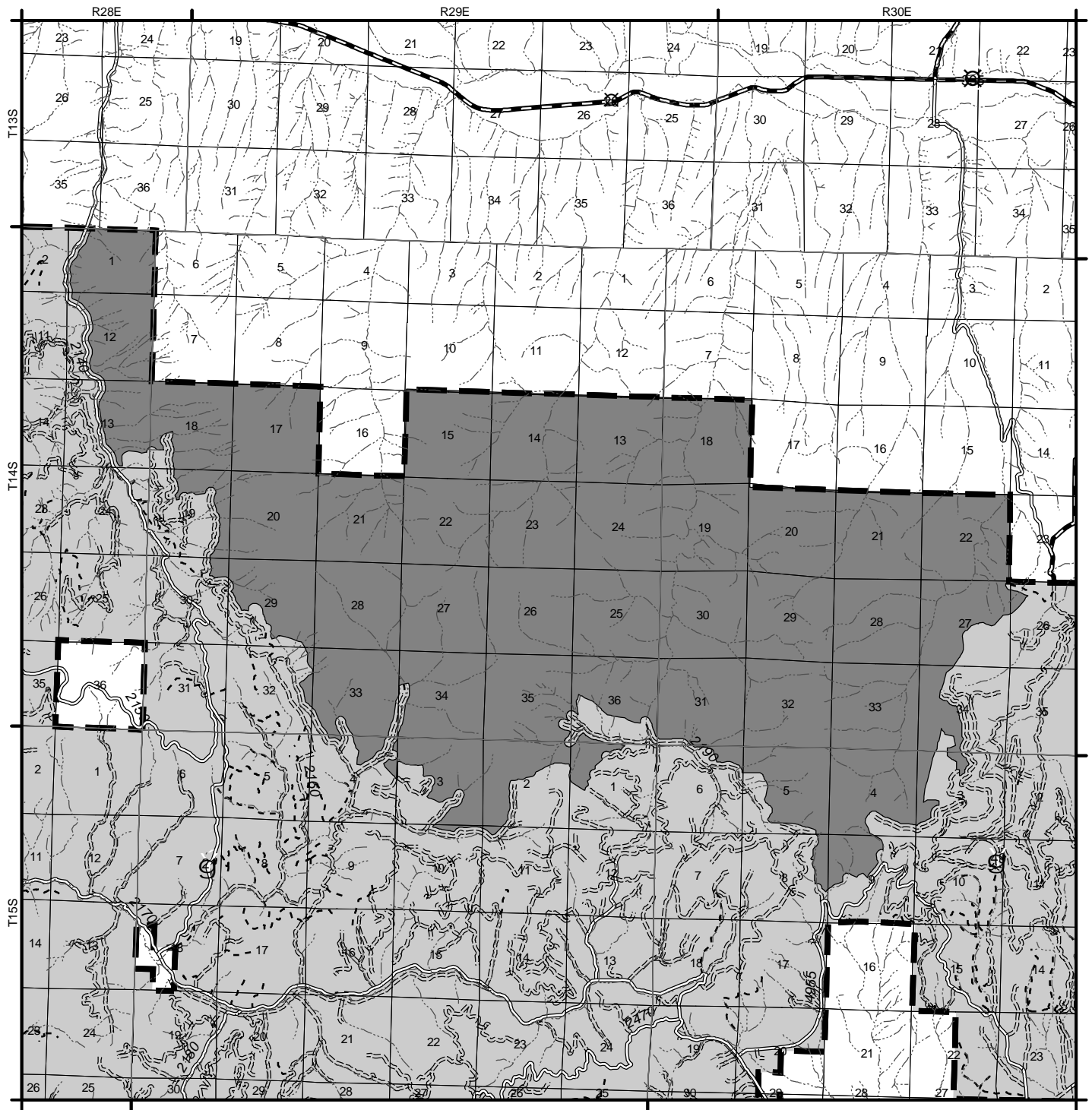

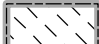

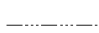
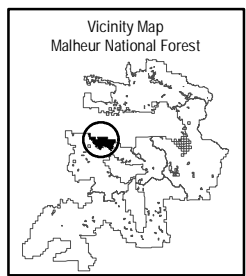


2008 Inventory of Areas with Wilderness Potential McClellan Mountain



-  National Forest/District Boundary
-  Wilderness Area
-  Areas with Wilderness Potential
-  Stream/River



This product is reproduced from geospatial information prepared by the U.S. Department of Agriculture Forest Service. GIS data and product accuracy may vary. They may be developed from sources of differing accuracy, accurate only at certain scales, based on modeling or interpretation, incomplete while being created or revised, etc... Using GIS products for purposes other than those for which they were created may yield inaccurate or misleading results. The Forest Service reserves the right to correct, update, modify, or replace GIS products without notification.
Produced by Dee A. McComell
File path is (C:\gis\revision\mapdata_maps\mal_final_PotWild.k11.mxd) 8/12/2008
RB: Albers Equal Area Projection, North American Datum 1983

