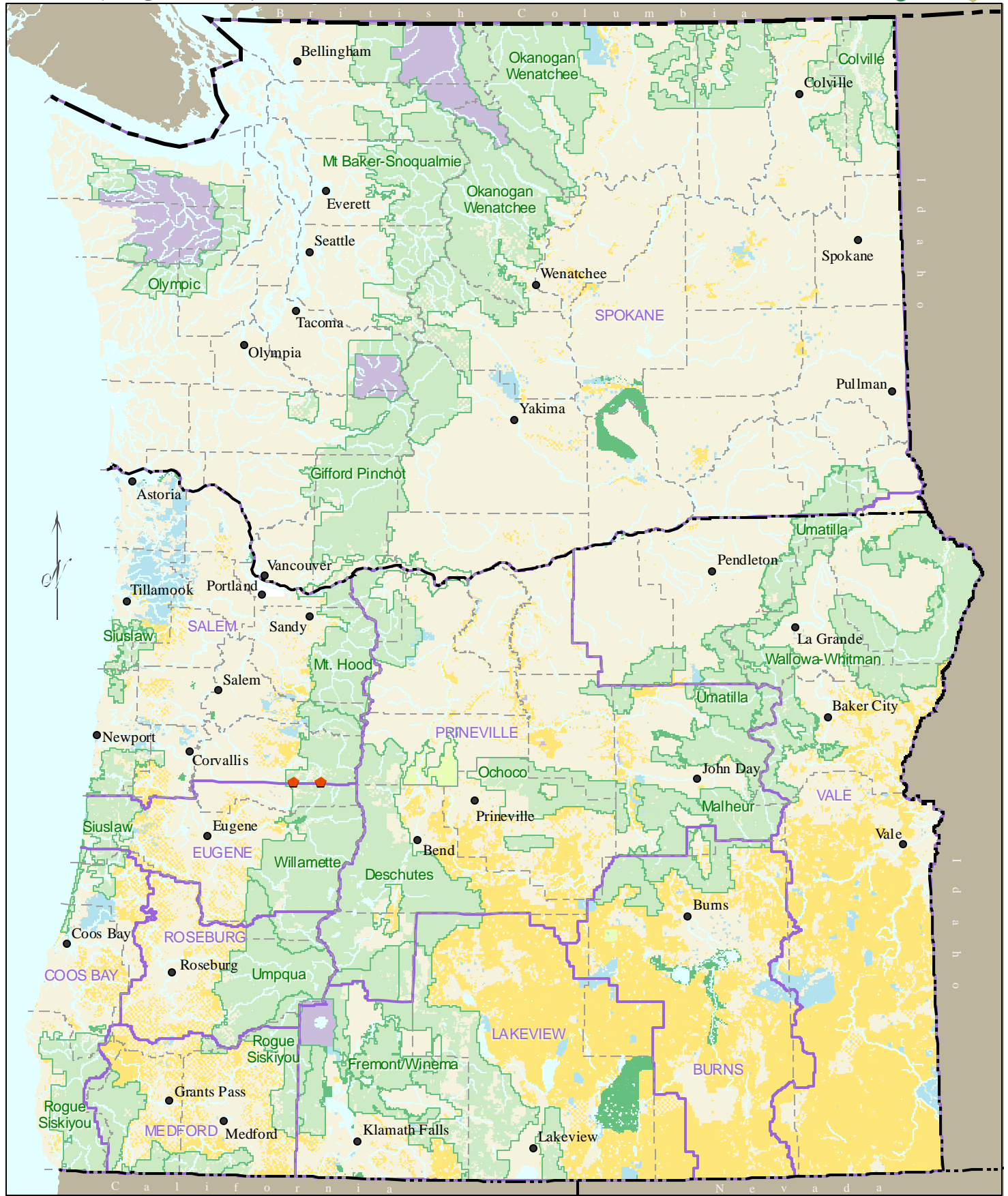


Fungus *Rhizopogon inquinatus*

RHINI8



No warranty is made by the Bureau of Land Management as to the accuracy, reliability, or completeness of these data for individual or aggregate use with other data. Original data were compiled from various sources. This information may not meet National Map Accuracy Standards. This product was developed through digital means and may be updated without notification.

- Locational Color Indicates Database Source**
- Bureau of Land Management
 - US Forest Service
 - National Park Service
 - State Lands
 - ISMS (Interagency Species Management System)
 - National Grasslands
 - RMS - Random Multi-species Surveys (Random Grid) NONE ON THIS MAP
 - All Other Locations in GeoBOB (Geographic Biotic Observations- BLM) NONE ON MAP
 - BLM District Boundaries
 - National Forest Boundaries
 - - - County Boundaries