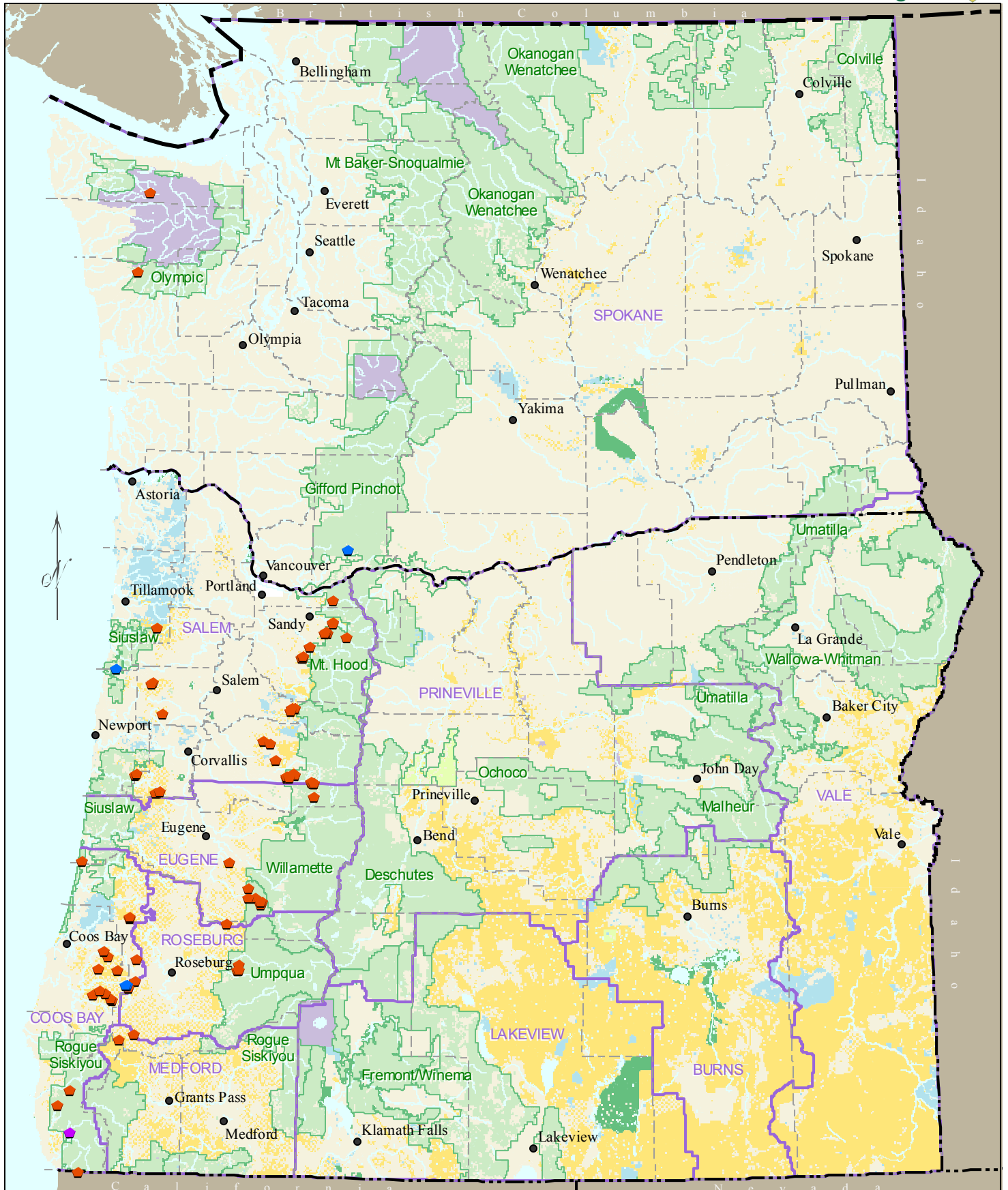
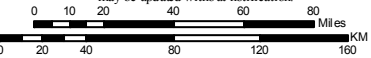


Fungus *Ramaria stuntzii*

RAST5



No warranty is made by the Bureau of Land Management as to the accuracy, reliability, or completeness of these data for individual or aggregate use with other data. Original data were compiled from various sources. This information may not meet National Map Accuracy Standards. This product was developed through digital means and may be updated without notification.



Locational Color Indicates Database Source
 Orange pentagon: ISMS (Interagency Species Management System)
 Purple pentagon: RMS - Random Multi-species Surveys (Random Grid)
 Blue pentagon: All Other Locations in GeoBOB (Geographic Biotic Observations - BLM)

Yellow: Bureau of Land Management
 Green: US Forest Service
 Light Green: National Grasslands
 Purple: National Park Service
 Dark Green: US Fish & Wildlife Service
 Light Blue: State Lands
 Purple line: BLM District Boundaries
 Dashed line: County Boundaries
 Green line: National Forest Boundaries