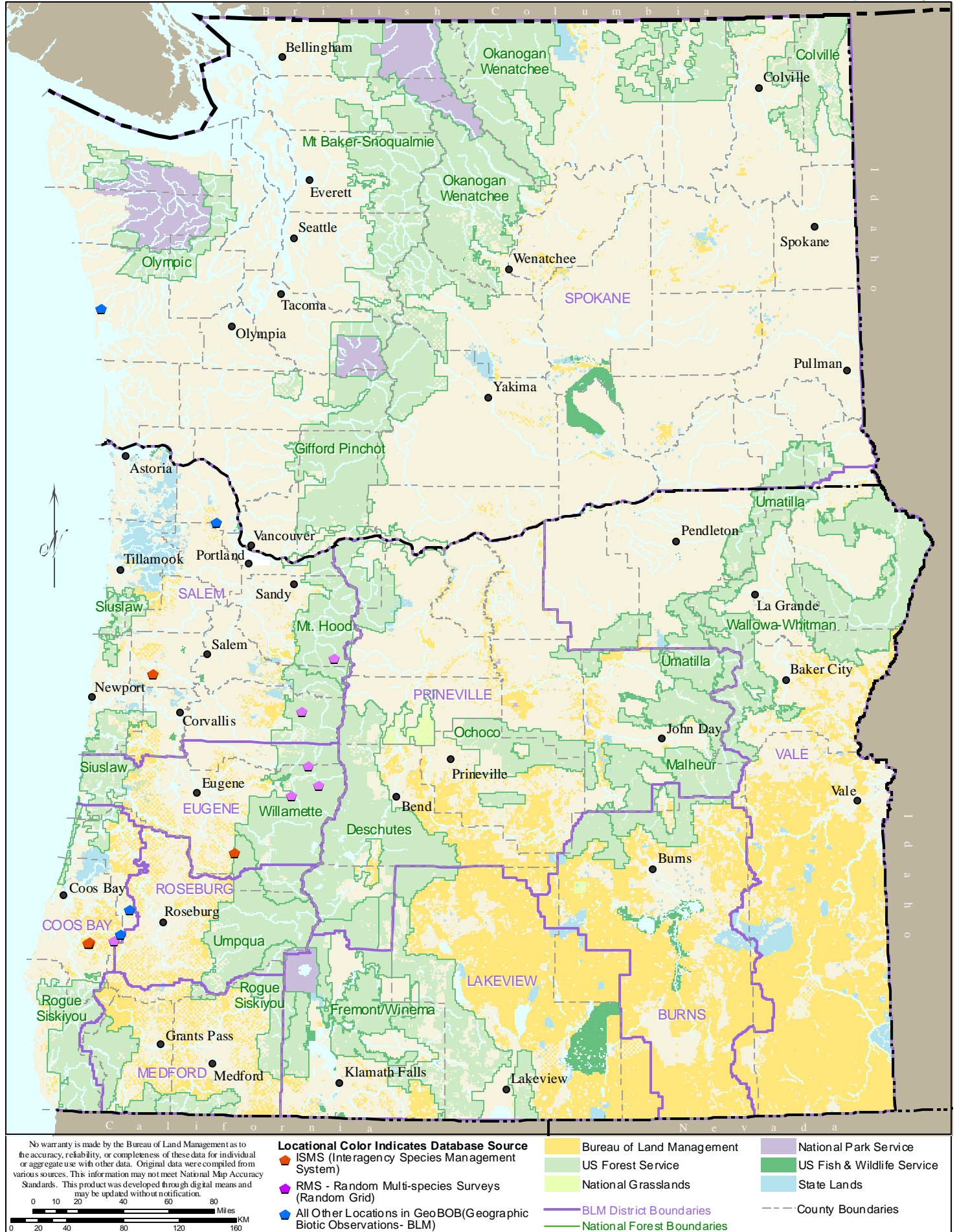


# Fungus *Ramaria conjunctipes* var. *sparsiramosa*

## RACOS



No warranty is made by the Bureau of Land Management as to the accuracy, reliability, or completeness of these data for individual or aggregate use with other data. Original data were compiled from various sources. This information may not meet National Map Accuracy Standards. This product was developed through digital means and may be updated without notification.

**Locational Color Indicates Database Source**  
 Orange Diamond - ISMS (Interagency Species Management System)  
 Purple Pentagon - Random Multi-species Surveys (Random Grid)  
 Blue Pentagon - All Other Locations in GeoBOB (Geographic Biotic Observations - BLM)

Yellow - Bureau of Land Management  
 Green - US Forest Service  
 Light Green - National Grasslands  
 Light Blue - State Lands  
 Purple - National Park Service  
 Dark Green - US Fish & Wildlife Service  
 Purple Line - BLM District Boundaries  
 Dashed Line - County Boundaries