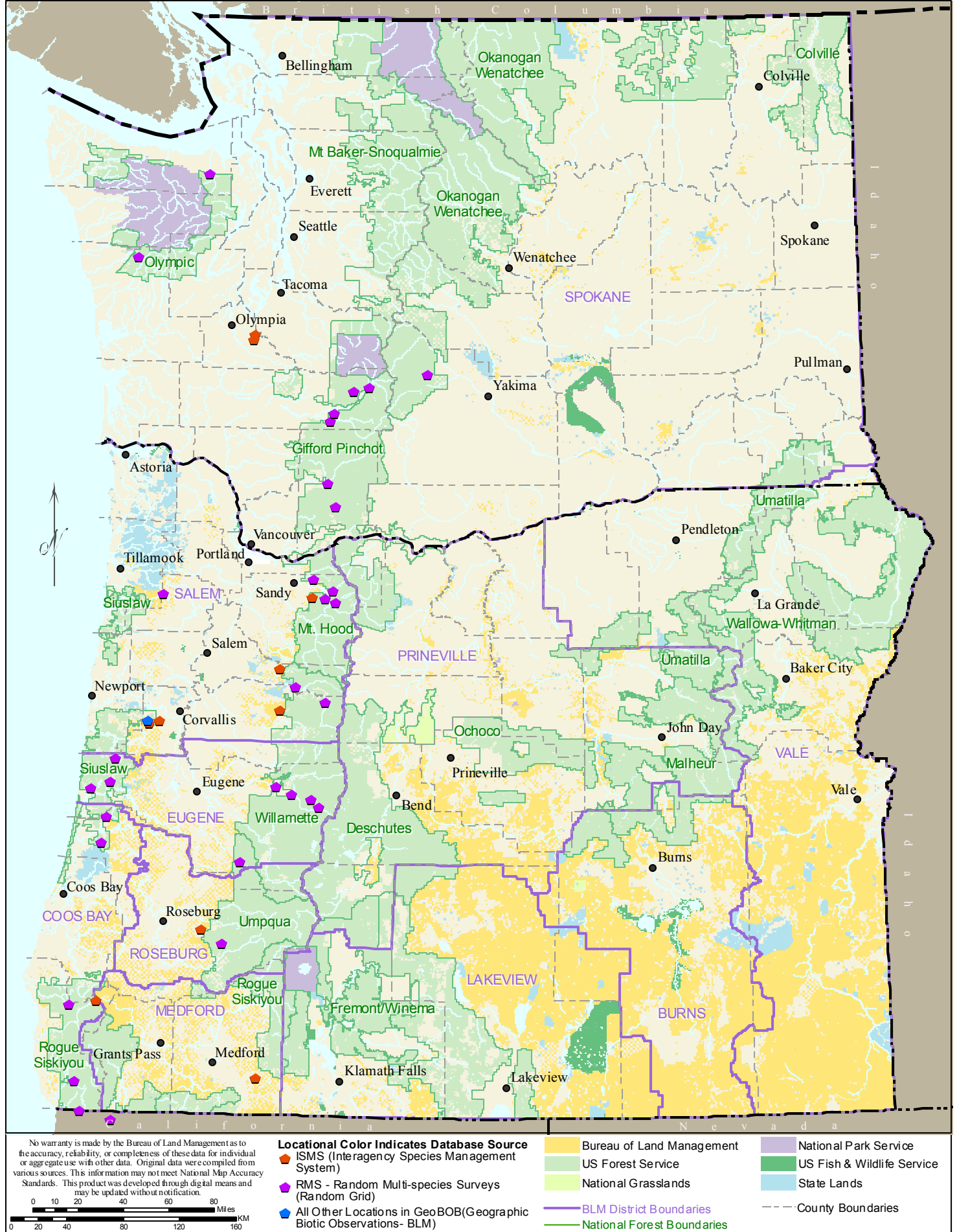


Fungus *Leucogaster citrinus*

LECI117



No warranty is made by the Bureau of Land Management as to the accuracy, reliability, or completeness of these data for individual or aggregate use with other data. Original data were compiled from various sources. This information may not meet National Map Accuracy Standards. This product was developed through digital means and may be updated without notification.

0 10 20 40 60 80 100 120 140 160 Miles
0 20 40 60 80 100 120 140 160 Kilometers

Locational Color Indicates Database Source

- Orange pentagon: ISMS (Interagency Species Management System)
- Purple pentagon: RMS - Random Multi-species Surveys (Random Grid)
- Blue pentagon: All Other Locations in GeoBOB (Geographic Biotic Observations - BLM)

- Yellow: Bureau of Land Management
- Light Green: US Forest Service
- Light Yellow: National Grasslands
- Purple line: BLM District Boundaries
- Green line: National Forest Boundaries

- Purple shaded area: National Park Service
- Dark Green shaded area: US Fish & Wildlife Service
- Light Blue shaded area: State Lands
- Dashed line: County Boundaries