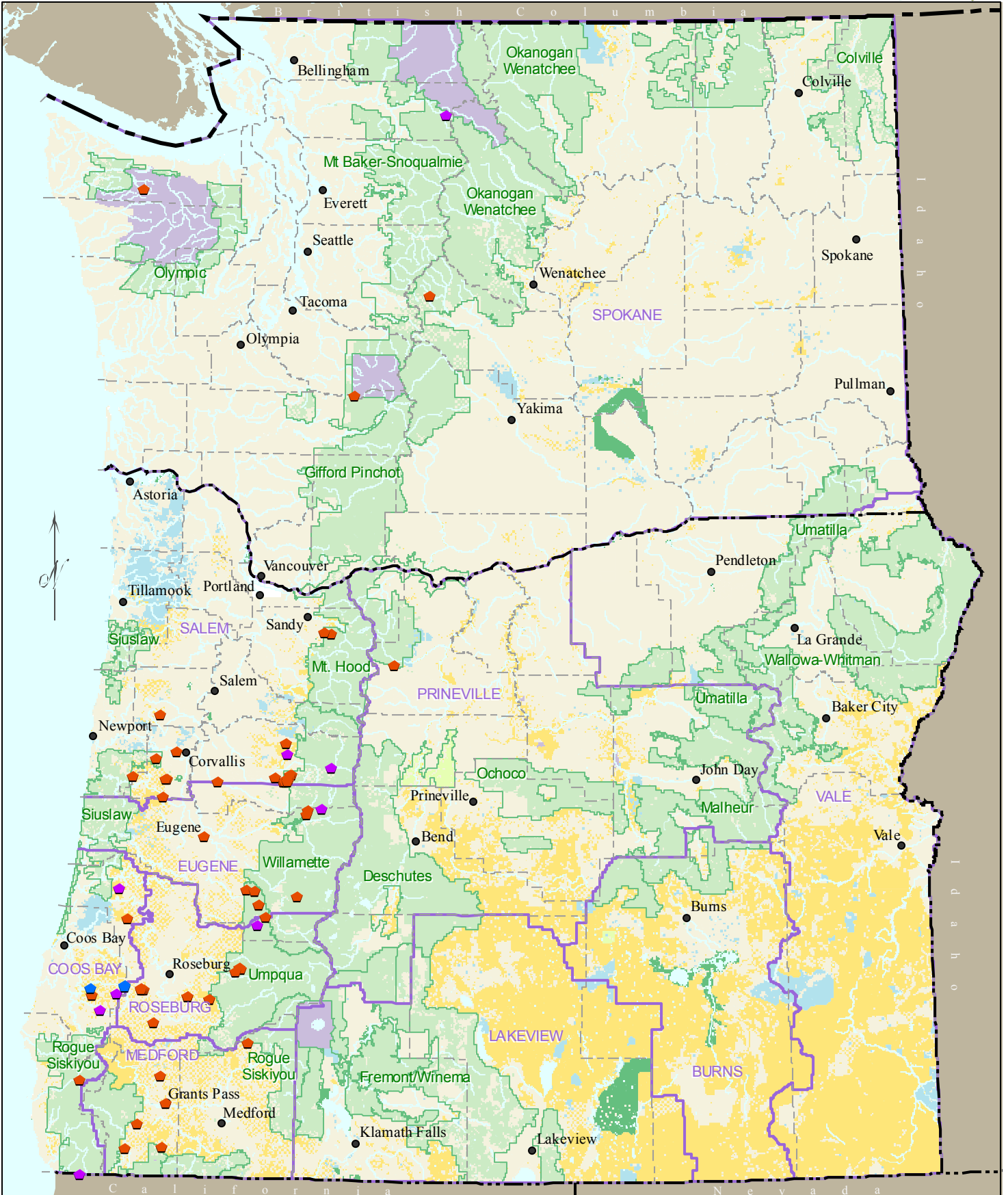


# Fungus *Clavariadelphus occidentalis*

CLOC4



No warranty is made by the Bureau of Land Management as to the accuracy, reliability, or completeness of these data for individual or aggregate use with other data. Original data were compiled from various sources. This information may not meet National Map Accuracy Standards. This product was developed through digital means and may be updated without notification.

0 10 20 40 60 80 Miles  
0 20 40 80 120 160 Kilometers

**Locational Color Indicates Database Source**

- Orange pentagon: ISMS (Interagency Species Management System)
- Purple pentagon: RMS - Random Multi-species Surveys (Random Grid)
- Blue pentagon: All Other Locations in GeoBOB (Geographic Biotic Observations- BLM)

**Legend:**

- Yellow: Bureau of Land Management
- Light Green: US Forest Service
- Light Yellow: National Grasslands
- Light Blue: State Lands
- Purple outline: BLM District Boundaries
- Green outline: National Forest Boundaries
- Purple: National Park Service
- Dark Green: US Fish & Wildlife Service
- Grey dashed line: County Boundaries