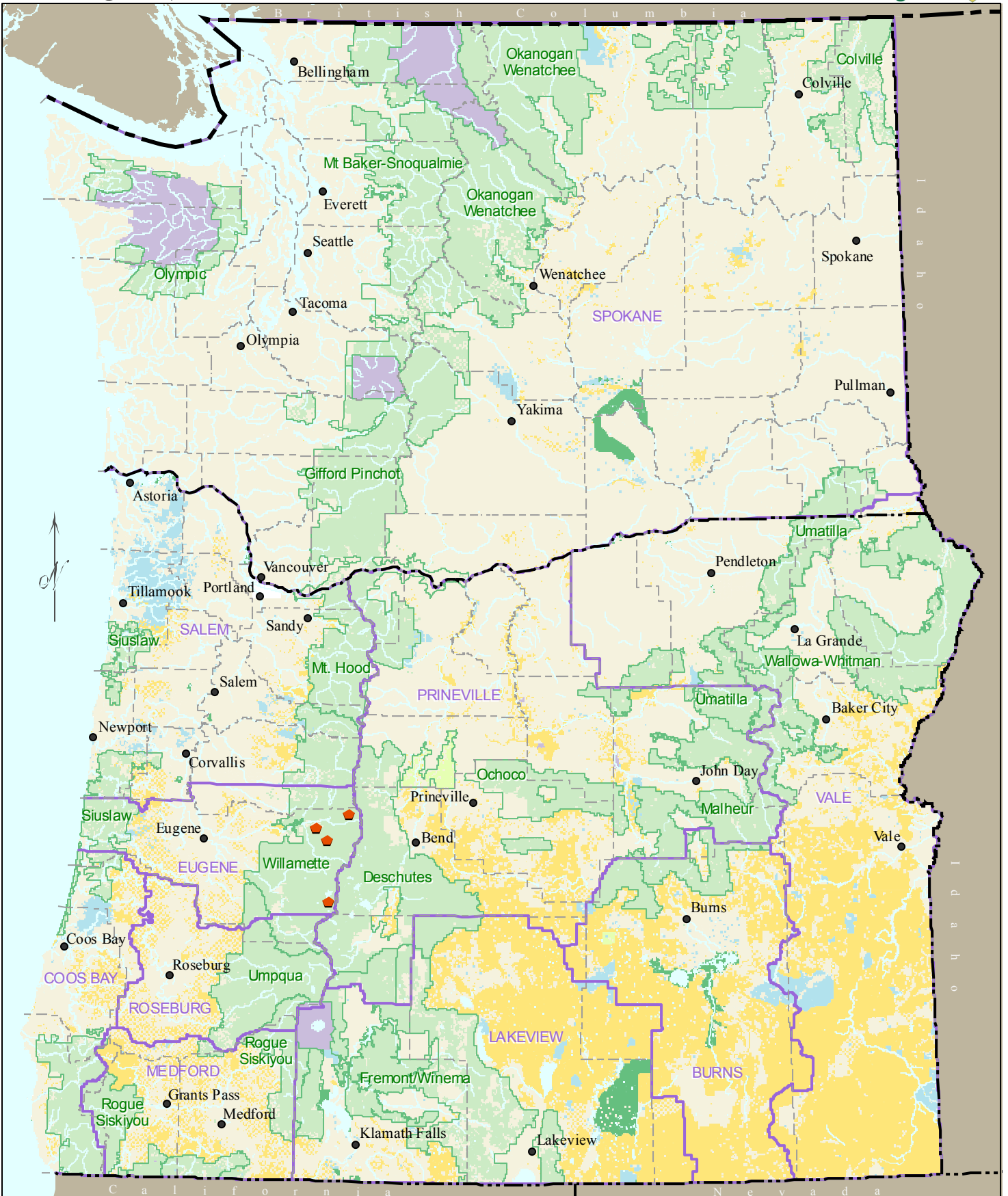


# Fungus *Chroogomphus loculatus*

CHLO2



No warranty is made by the Bureau of Land Management as to the accuracy, reliability, or completeness of these data for individual or aggregate use with other data. Original data were compiled from various sources. This information may not meet National Map Accuracy Standards. This product was developed through digital means and may be updated without notification.

0 10 20 40 60 80 Miles  
0 20 40 80 120 160 Kilometers

**Locational Color Indicates Database Source**

- Orange diamond: ISMS (Interagency Species Management System)
- Purple diamond: RMS - Random Multi-species Surveys (Random Grid) NONE ON THIS MAP
- Blue diamond: All Other Locations in GeoBOB (Geographic Biotic Observations- BLM) NONE ON MAP
- Yellow: Bureau of Land Management
- Light Green: US Forest Service
- Light Yellow: National Grasslands
- Purple outline: BLM District Boundaries
- Dark Green: National Park Service
- Dark Green: US Fish & Wildlife Service
- Light Blue: State Lands
- Black dashed line: County Boundaries
- Green outline: National Forest Boundaries