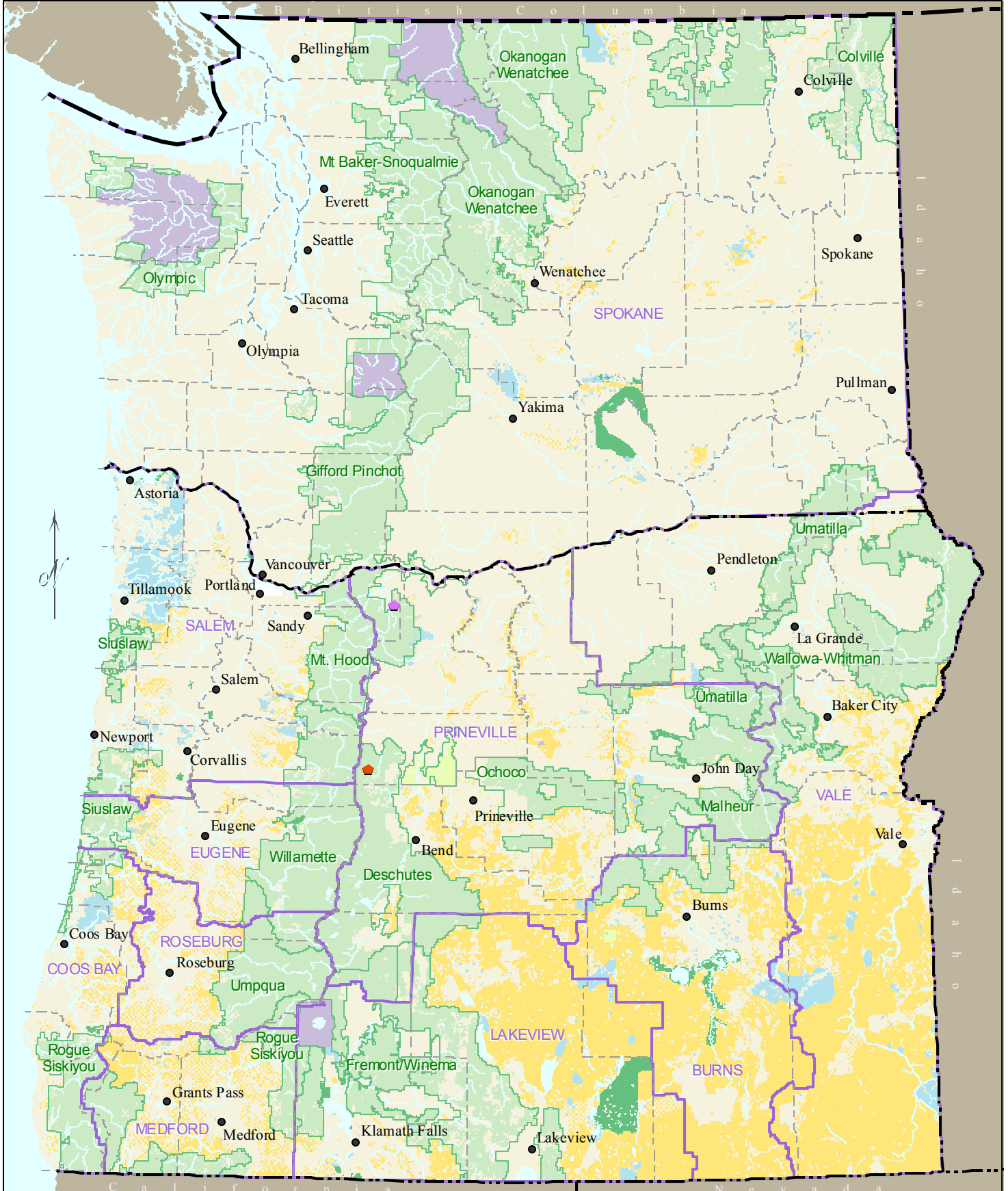


# Fungus *Arcangeliella lactarioides*

ARLA29



No warranty is made by the Bureau of Land Management as to the accuracy, reliability, or completeness of these data for individual or aggregate use with other data. Original data were compiled from various sources. This information may not meet National Map Accuracy Standards. This product was developed through digital means and may be updated without notification.

0 10 20 40 60 80 100 120 140 160 Miles  
0 20 40 80 120 160 Kilometers

|  |  |                           |                            |
|--|--|---------------------------|----------------------------|
| <b>Location Color Indicates Database Source</b>                                  | ISMS (Interagency Species Management System) | Bureau of Land Management | National Park Service      |
| RMS - Random Multi-species Surveys (Random Grid)                                 | US Forest Service                            | National Grasslands       | US Fish & Wildlife Service |
| All Other Locations in GeoBOB (Geographic Biotic Observations - BLM) NONE ON MAP | BLM District Boundaries                      | State Lands               | County Boundaries          |
|  | National Forest Boundaries                   |                           |                            |