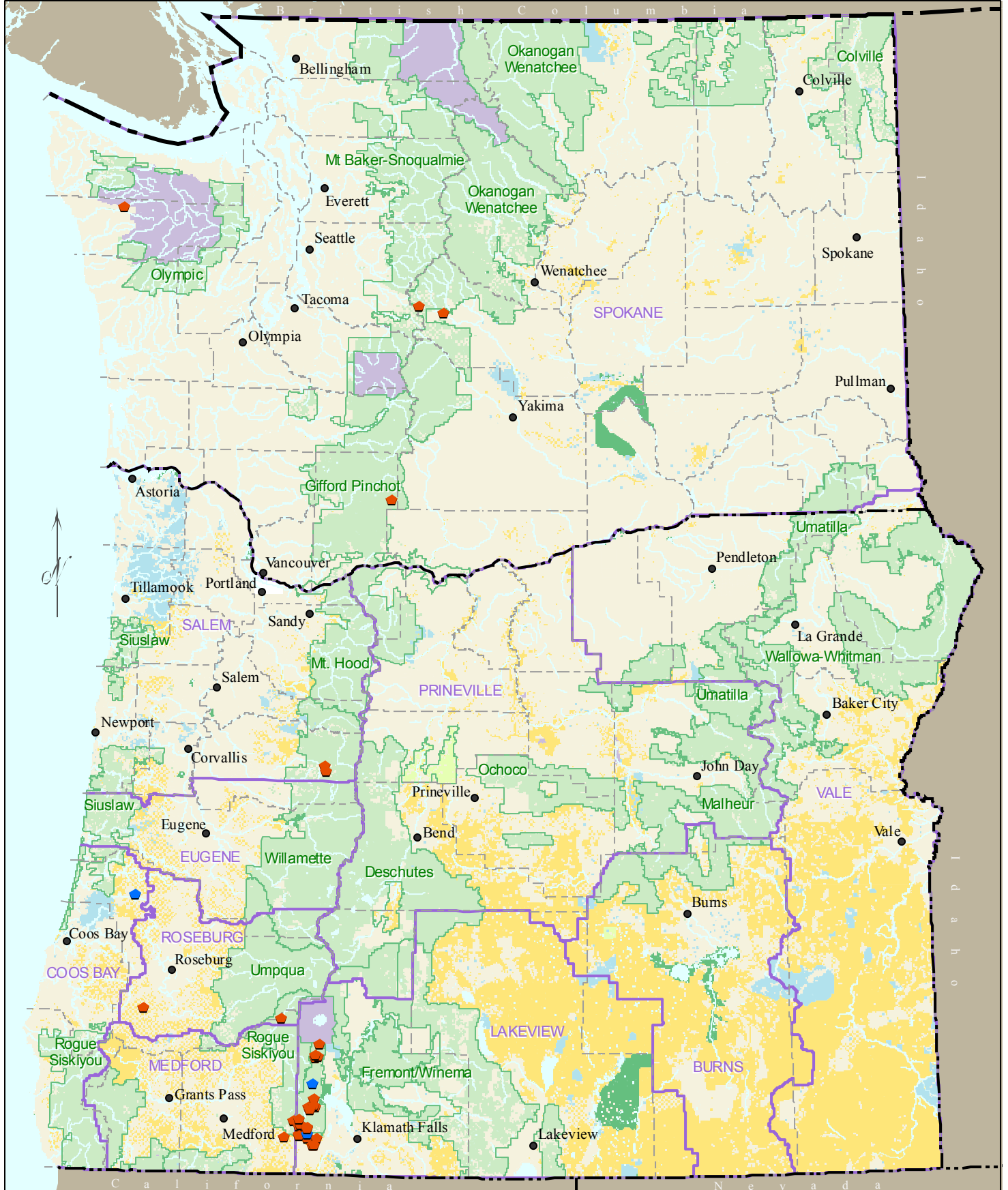


# Fungus *Albatrellus ellisii*

ALEL4



No warranty is made by the Bureau of Land Management as to the accuracy, reliability, or completeness of these data for individual or aggregate use with other data. Original data were compiled from various sources. This information may not meet National Map Accuracy Standards. This product was developed through digital means and may be updated without notification.

0 10 20 40 60 80 Miles  
0 20 40 80 120 160 Kilometers

- Locational Color Indicates Database Source**
- Orange pentagon: ISMS (Interagency Species Management System)
  - Purple pentagon: RMS - Random Multi-species Surveys (Random Grid) NONE ON THIS MAP
  - Blue pentagon: All Other Locations in GeoBOB (Geographic Biotic Observations- BLM)
  - Yellow: Bureau of Land Management
  - Green: US Forest Service
  - Light Green: National Grasslands
  - Purple: National Park Service
  - Dark Green: US Fish & Wildlife Service
  - Light Blue: State Lands
  - Thick Purple Line: BLM District Boundaries
  - Dashed Line: County Boundaries
  - Thin Green Line: National Forest Boundaries