

I. Project Area

The project area included seven analysis units that stretched across the Blue Mountains of Northeast Oregon and Southeast Washington. The Methow Valley Ranger District was involved on the Okanogan National Forest.

The Region that addressed the Douglas-fir Tussock Moth (DFTM) infestation in both Oregon and Washington prepared an Environmental Impact Statement. It identified several thousand acres of DFTM host type stands on the Okanogan-Wenatchee National Forest.

After intensive fall sampling for the locations of treatable populations, some of the host type areas were dropped from treatment, but would be analysed for potential control plot locations. The forest was left with approximately 30,630 acres separated into multiple spray blocks in the remaining six analysis units as displayed in Table 1. Maps of the analysis units that display spray block locations are found in Appendix A.

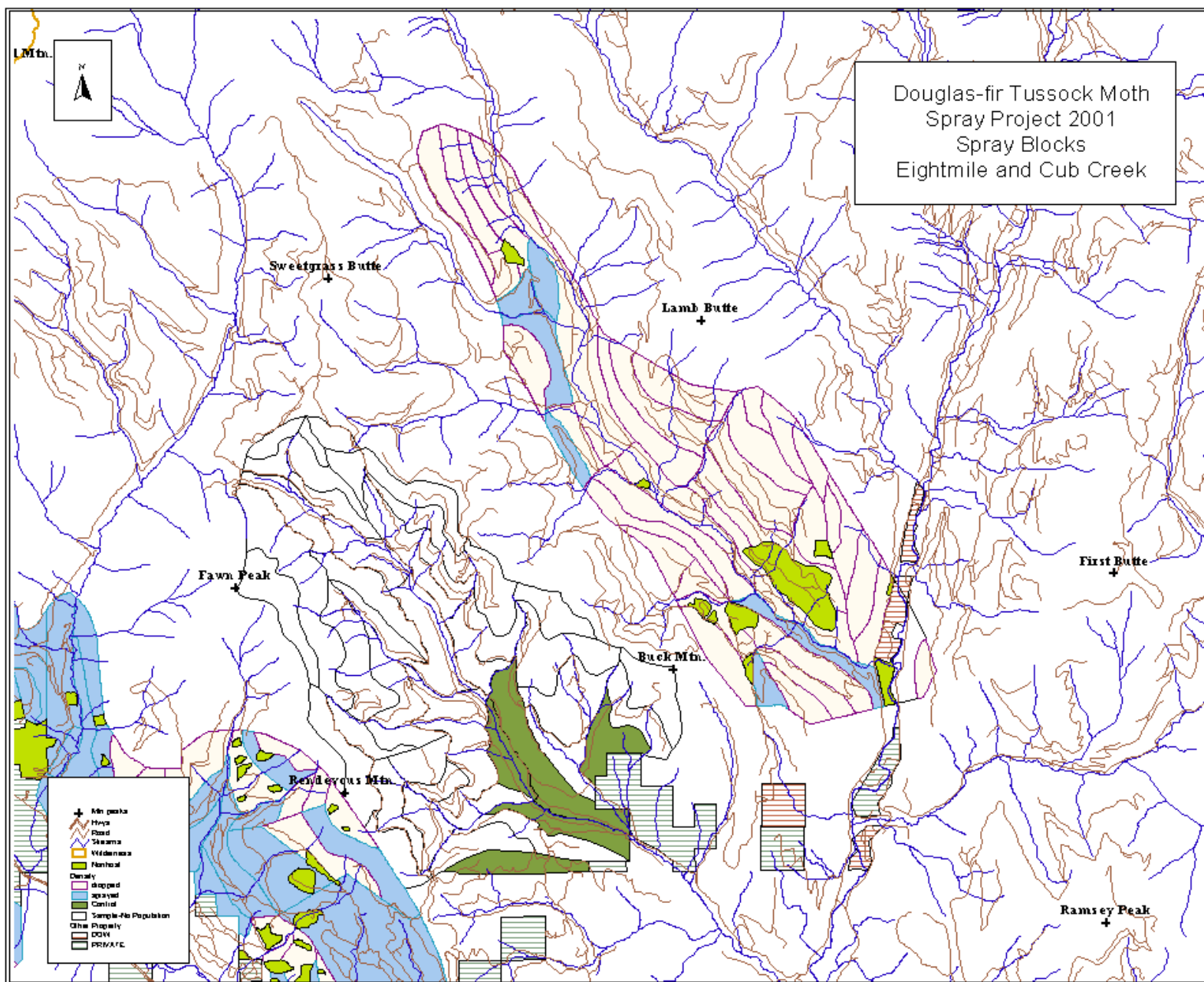
II. Accomplishments

Field crews verified sub-outbreak populations of DFTM in all six-analysis units, however several of the areas did not meet the Regional minimum requirement for spray. Eventually 16,190 acres were sprayed on the Okanogan National Forest as shown in Table 1 below.

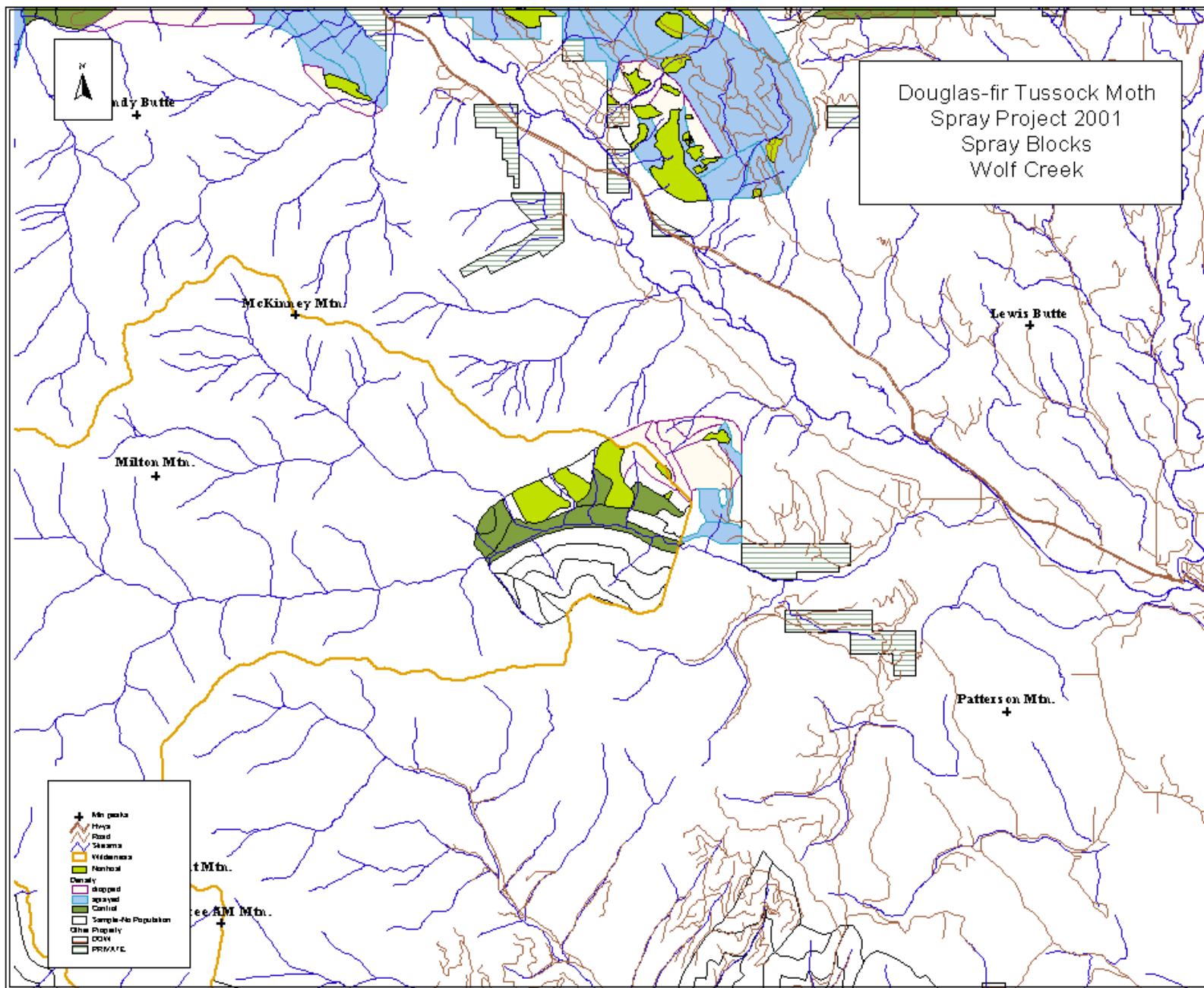
Table 1: Project Area Acres

Column Heading		Column Heading	
Analysis Unit	Mazama	Analysis Unit	Eight Mile
Potential Treatment Acres	22,150	Potential Treatment Acres	7817
Total Acres Sprayed	15,713	Total Acres Sprayed	800
Total Acres Dropped	6437	Total Acres Dropped	7017
Column Heading		Column Heading	
Analysis Unit	Wolf (Spray)	Analysis Unit	Twisp River
Gross Acres	664	Gross Acres	43,667
Total Acres Sprayed	117	Total Acres Qualified	333(control ac.)
Total Acres Dropped	487	Total Acres Dropped	43,334
Column Heading		Column Heading	
Analysis Unit	Cub	Analysis Unit	Wolf (Control)
Gross Acres	9941	Gross Acres	1170
Total Acres Qualified	1258(Control ac.)	Total Acres Qualified	293 (Control ac.)
Total Acres Dropped	8683	Total Acres Dropped	877

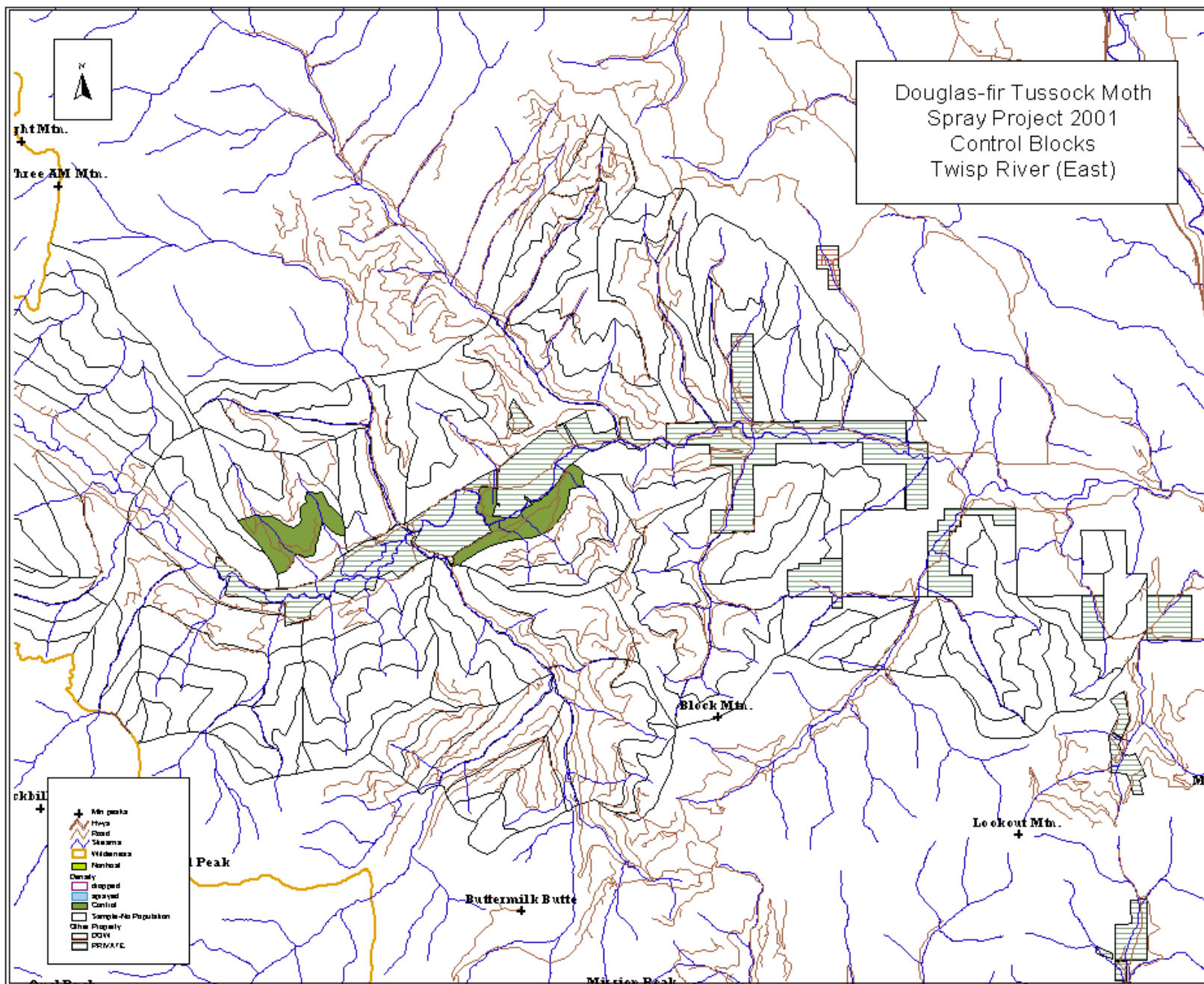
Douglas-fir Tussock Moth Project Final Report July 2001 Methow Valley
Appendices—Appendix A Analysis Unit Maps



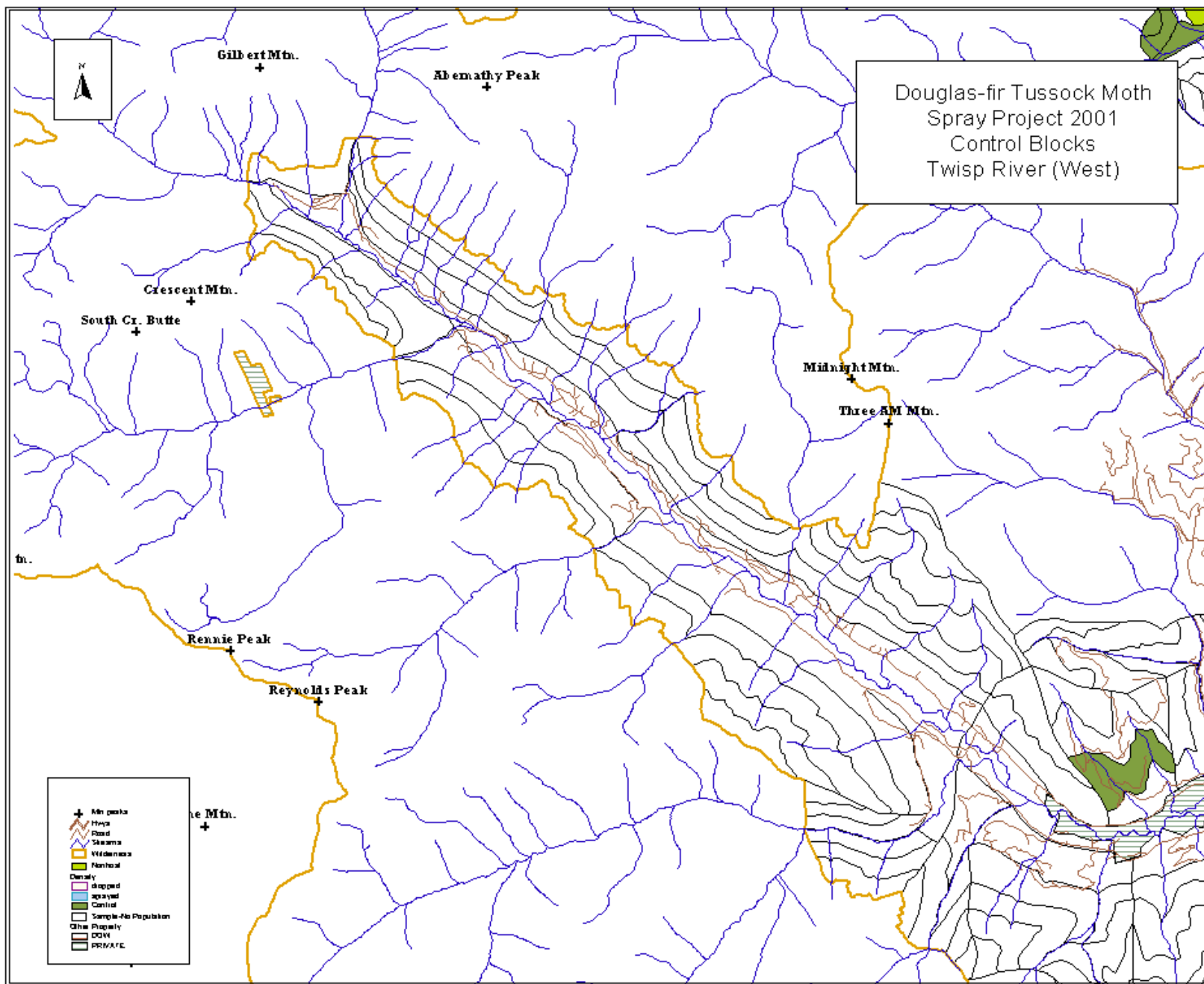
Douglas-fir Tussock Moth Project Final Report July 2001 Methow Valley
Appendices—Appendix A Analysis Unit Maps



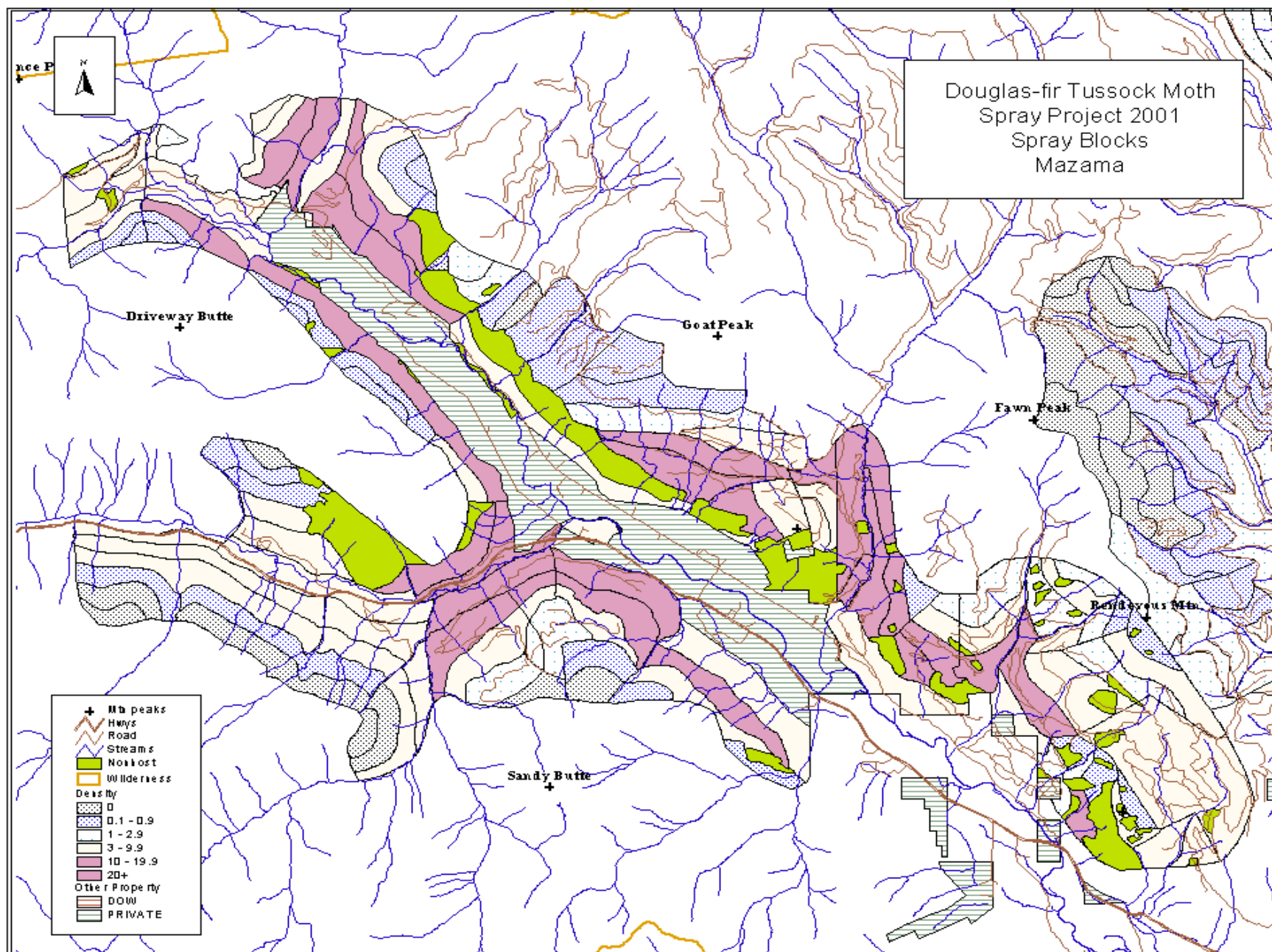
Douglas-fir Tussock Moth Project Final Report July 2001 Methow Valley
Appendices—Appendix A Analysis Unit Maps



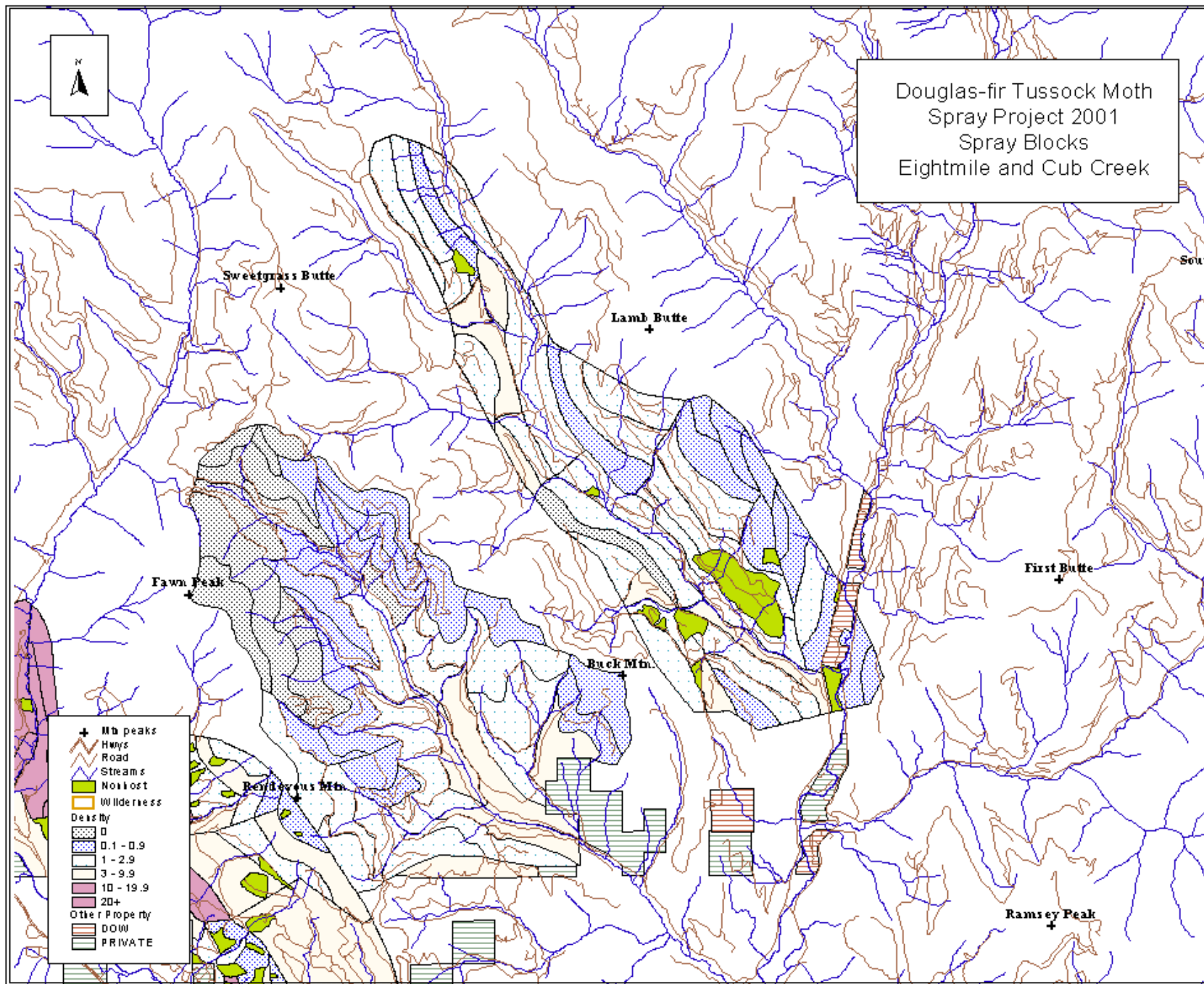
Douglas-fir Tussock Moth Project Final Report July 2001 Methow Valley
 Appendices—Appendix A Analysis Unit Maps



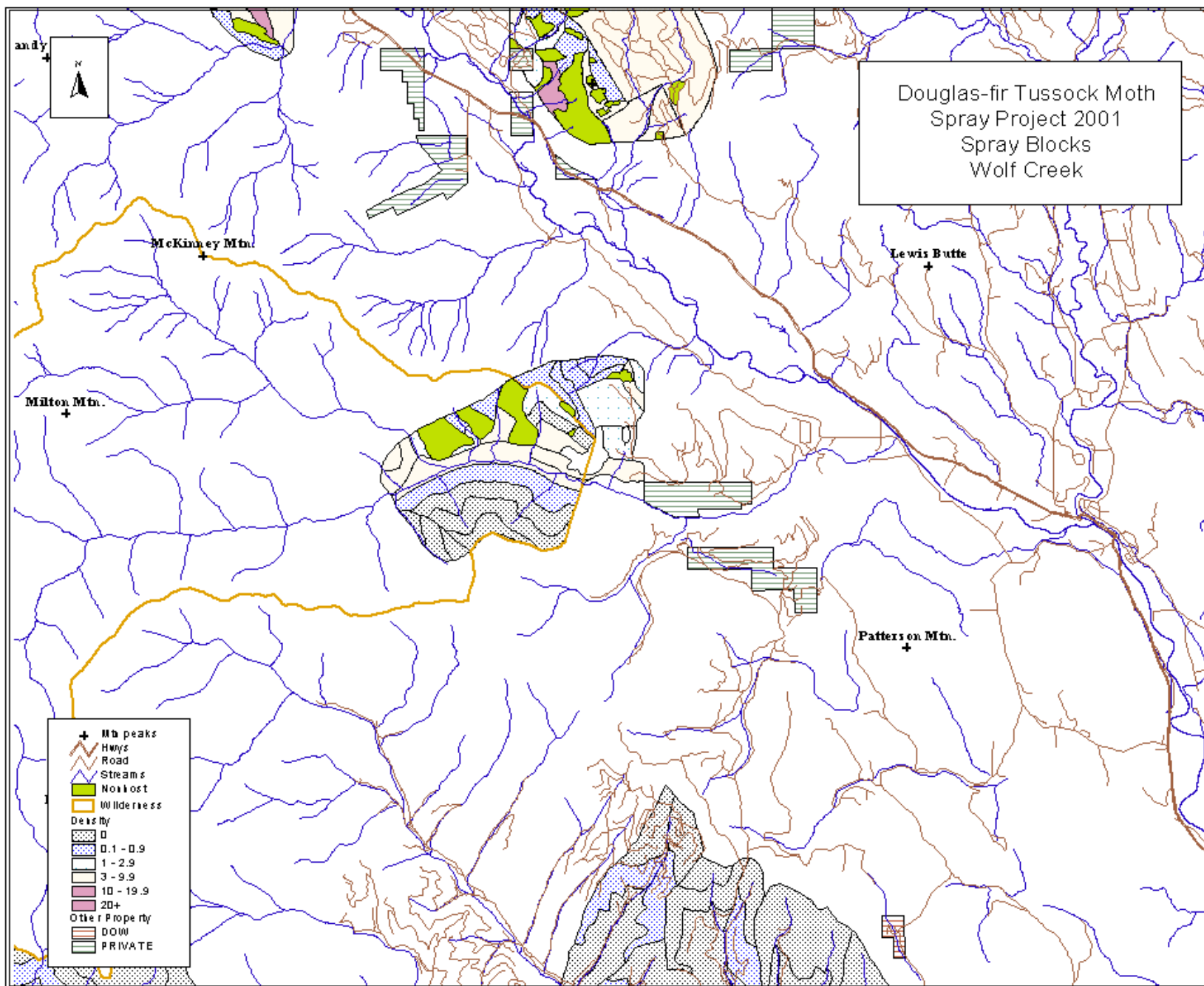
Appendix – A -1 (population density maps)



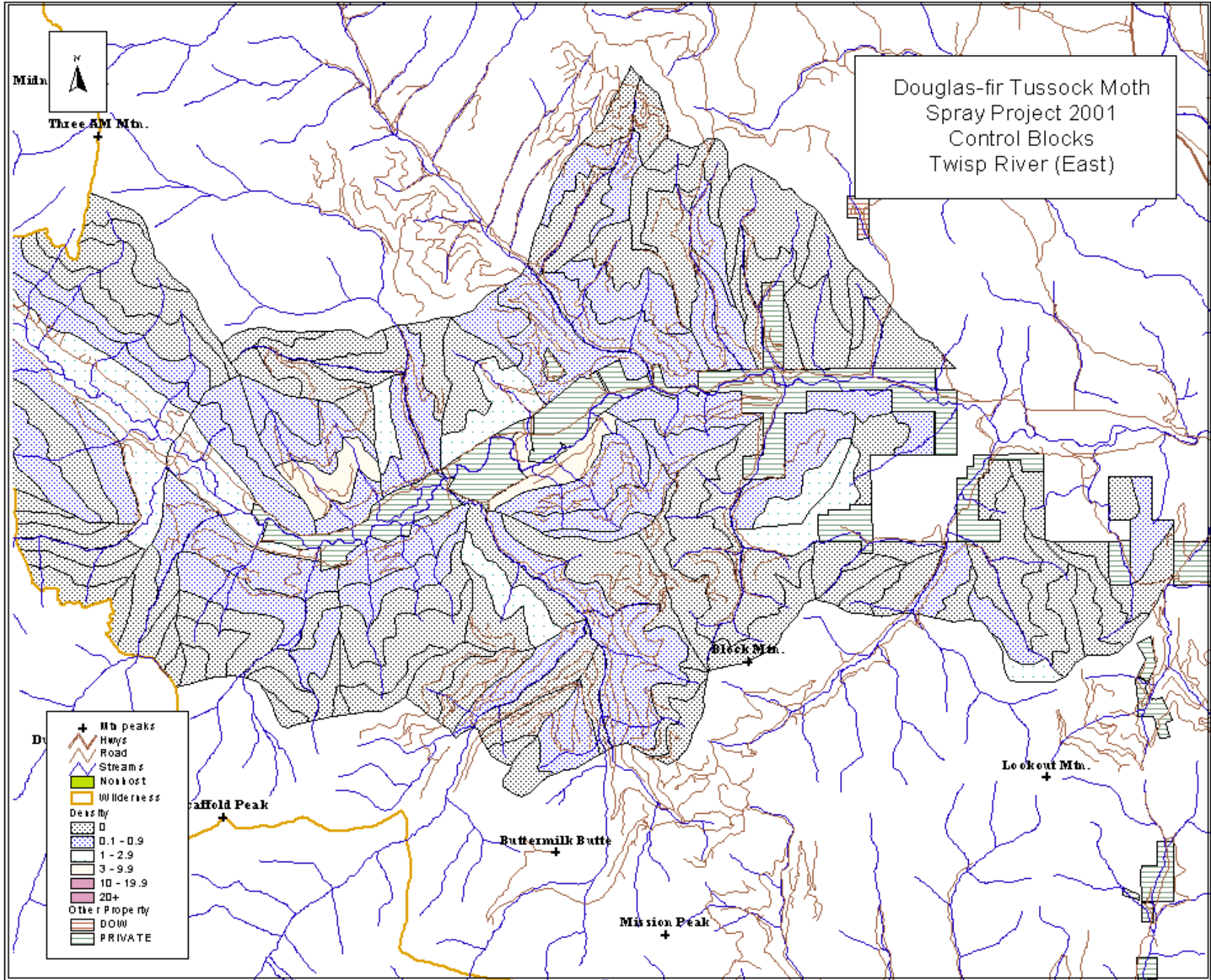
Douglas-fir Tussock Moth Project Final Report July 2001 Methow Valley
 Appendices—Appendix A Analysis Unit Maps



Douglas-fir Tussock Moth Project Final Report July 2001 Methow Valley
 Appendices—Appendix A Analysis Unit Maps



Douglas-fir Tussock Moth Project Final Report July 2001 Methow Valley
 Appendices—Appendix A Analysis Unit Maps



Douglas-fir Tussock Moth Project Final Report July 2001 Methow Valley
 Appendices—Appendix A Analysis Unit Maps

