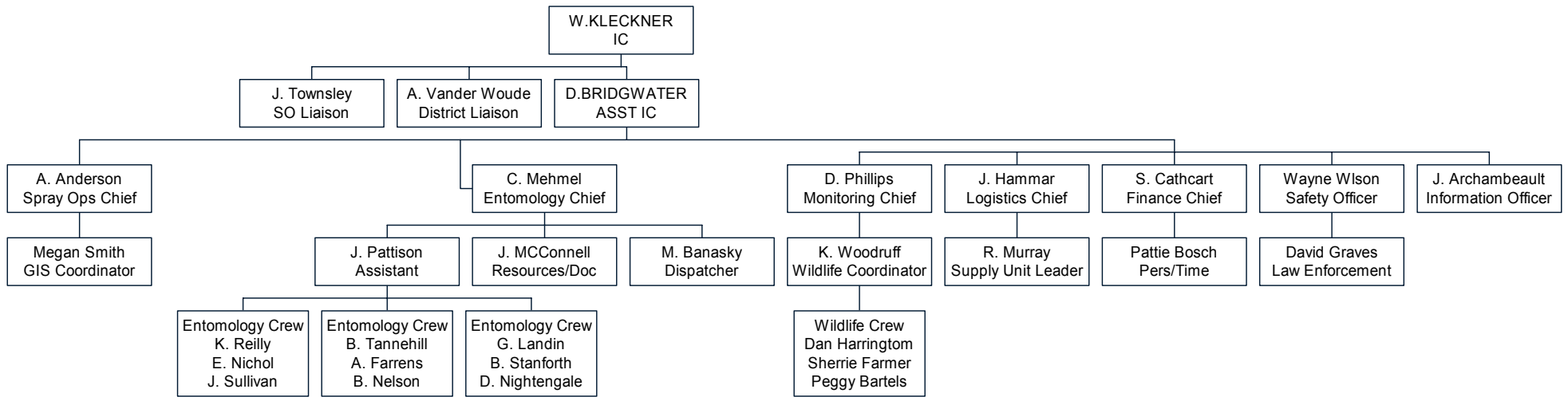


B. Appendix – Organizational Charts

2001 DFTM SPRAY PROJECT



Douglas-fir Tussock Moth Project Final Report July 2001 Methow Valley
 Appendices—Appendix C Finance & Personnel

C. Appendix – Finance and Personnel

BUDGET FOR METHOW VALLEY DFTM SUPPRESSION PROJECT														
7/14/01														
		Number of Persons	Estimated Cost Per Day	Days Needed	Perdiem Days	Perdiem Cost Per Day	Total Employee Cost	Supplies	Supply Cost	Vehicles	FOR Cost	Fuel/Main Cost	Total Vehicle Cost	Total Estimated Cost
Op.	Operations	12	\$300	37	37	\$100	\$177,600	Misc	\$4,000	11	\$750	\$1,628	\$9,878	\$191,478
							\$0	Contract acres	\$551,468			\$0	\$0	\$551,468
	Art Anderson	1					\$40,000	16690	\$0			\$0	\$0	\$0
							\$0					\$0	\$0	\$0
							\$0					\$0	\$0	\$0
							\$0					\$0	\$0	\$0
Ent.	Entomology	21	\$200	60	19	\$100	\$291,900	Misc	\$10,000	12	\$1,500	\$2,880	\$20,880	\$322,780
		1	10wks ft	4 wks 10/wk			\$37,000	Contract Entomologist		1	\$500	\$100	\$600	\$37,600
							\$0					\$0	\$0	\$0
							\$0					\$0	\$0	\$0
Safety	Safety	1	\$300	30	0	\$100	\$9,000	Misc	\$1,200	1	\$100	\$180	\$280	\$10,480
							\$0	Mandatory 1st Aid training	\$500			\$0	\$0	\$500
							\$0	Defensive Driving	\$500			\$0	\$0	\$500
							\$0					\$0	\$0	\$0
							\$0	Cache	\$14,000			\$0	\$0	\$14,000
LEO	LEO/Traffic	1	\$300	2	0	\$0	\$600			1	\$0	\$12	\$12	\$612
							\$0					\$0	\$0	\$0
							\$0	Misc/supp	\$3,000			\$0	\$0	\$3,000
Logistics	Logistics	2	\$240	63			\$30,240	Copier	\$2,239			\$0	\$0	\$32,479
	Radio comm.	1	\$200	10			\$2,000	Cooler Utilities	\$1,000			\$0	\$0	\$3,000
							\$0	Office Lease/rug	\$11,000			\$0	\$0	\$11,000
							\$0	Print/computer support	\$5,000			\$0	\$0	\$5,000
								ELECTRIC	\$1,000					\$1,000
							\$0	Office Cleaning	\$1,400			\$0	\$0	\$1,400

Douglas-fir Tussock Moth Project Final Report July 2001 Methow Valley

Appendices—Appendix C Finance & Personnel

IO	IO	1	\$240	40	40	\$100	\$13,600	Video film/prep	\$0	2	\$500	\$480	\$1,480	\$15,080
	Arch	1	\$240	30			\$7,200					\$0	\$0	\$7,200
	Contract PIO/Tonn						\$6,000					\$0	\$0	\$6,000
Finance	Finance	1	\$270	90			\$24,300	Excell	\$400			\$0	\$0	\$24,700
		1	\$240	75	61	\$100	\$24,100			2	\$500	\$900	\$1,900	\$26,000
Monitoring	Monitoring	2	\$250	40	0	\$100	\$20,000	Misc	\$6,000	4	\$500	\$960	\$2,960	\$28,960
Wildlife Mon. Plan	Wildlife Mon. Plan						\$60,000					\$0	\$0	\$60,000
							\$0					\$0	\$0	\$0
IC	IC			80			\$35,000	Award Pool	\$20,000	1	\$500	\$480	\$980	\$55,980
							\$0					\$0	\$0	\$0
	Liaison	2	\$300	20	22	\$100	\$16,400			1	\$500	\$120	\$620	\$17,020
							\$0					\$0	\$0	\$0
							\$0					\$0	\$0	\$0
Sampling	Fall Sampling	6	\$160	30			\$28,800			2	\$500	\$360	\$1,360	\$30,160
	Spray Analysis						\$0	Analysis	\$2,000			\$0	\$0	\$2,000
	Winter Cocoon sample	4	\$160	20			\$12,800	Snow Machines	\$800	2	\$500	\$240	\$1,240	\$14,840
	Pre Spray						\$35,000	IC HQ Phones	\$4,000			\$0	\$0	\$39,000
							\$0	4 PC + equip	\$3,000			\$0	\$0	\$3,000
												\$0	\$0	\$0
					179		\$0					\$0	\$0	\$0
							\$0					\$0	\$0	\$0
							\$0					\$0	\$0	\$0
							\$0					\$0	\$0	\$0
							\$871,540						\$42,190	\$1,516,237
Assumptions:														
	1. Cost per day is based on average 12-hour workday. Hourly costs estimated based on average of grades likely to be in the Staff area.													
	2. No per diem costs for local personnel, however about 50% of project personnel likely to be detailers.													
	3. Entomology staff includes Connie, Assistant, and 10 - 2 person crews.													
	4. Operations includes GIS, aerial operations, dispatch with total of 13 persons, including Art Anderson.													
	5. Wildlife monitoring program with costs as described by Woodruff in his draft monitoring plan. Need to flesh out plan to address methodology, days of work, sample design, reports, analysis, etc.													
	6. Need to develop vegetation monitoring plan with all elements defined (sample design, sample methods, analysis, etc.)													
	7. Office Lease from 1 May - 31 July.													

Douglas-fir Tussock Moth Project Final Report July 2001 Methow Valley
 Appendices—Appendix D Logistics

D. Appendix – Logistics

**ICS 218
 Support Vehicle Inventory**

Vehicle Information (Use separate sheet for each vehicle category) APPENDIX D - 3

Type	Make	I.D. Number	Location	FOR COST	MO	MI/ COST	MI	AMT	DAILY COST	DAYS	AMT	Released To	Time
E-2	GMC SUB	285-3127	A. ANDERSON	239	3	20	4000	1517			1517	DISTRICT	
E-9	JEEP	242-2951	ICP	165	3	14	500	565			565	WNP	
E-28	FORD PU	150-7198	PATTISON	158	3	11	5280	1055			1055	7/14 HOME	
E-29	CHEV PU	287-9468	STANFORTH	208	1	21	500	313			313	DISTRICT	
E-30	JEEP	242-6605	NIGHTENGALE	165	3	14	1500	705			705	WNP	
E-31	GMC SUB	285-3756	REILLY	191	2	20	3353	1053			1053	06-16/01	
E-32	JEEP	242-6453	LANDIN	145	1	18	2440	584			584	06-09-01	
E-33	FORD PU	150-6421	HAMMER	153	2	11	2000	526			526	DISTRCT	
E-34 -	FORD PU	180-1326	WILDLIFE	151	2	14		602			602	6/2/01 TRAIL CREW	
E-35	DODGE PU	250-9149	WAYNE WILSON	163		15	297	44.55			44.55	DISTRICT	
E-36	FORD BRONCO	5097	SUTTON	215		17	1185	416.45			416.45	HOME 6/29	
E-37	CHEV PU	G6224948	MIKE CARNEY	300	1	16	2649	423.84			423.84	HOME 7/7	NPS
E-38	FORD SUV	245-6348	MARSHALL GOOD	200	1	18	1948	550.84			550.84	HOME 7/8	
E-39	CHEV/..... CLUB	8279	ED BRIDGEMAN	185	1	16	2484	582.44			582.44	HOME 6/29	
E-40			CHARLES GROGAN				ON POV LIST						
E-41	DODGE... ..4X4	280-9318	SANDY SUMMERS	236		36	2260	832			832	HOME 7/12	
E-42	FORD	250-7197	STEVE ANDERSON	158	1	.18	3796	841.28			841.28	HOME 7/11	
E-43	FORD4X4	280-7156	RICHARD MURRAY	198		22	800	572			572	DISTRICT	
E-44													

Douglas-fir Tussock Moth Project Final Report July 2001 Methow Valley
 Appendices—Appendix D Logistics

ICS 218

(9/95)

ICS 218

RUSTYS RENTALS

Support Vehicle Inventory

Type	Make	Agency/Owner APSC/Rental	DATE RECEIVED	MAY	JUNE	JULY		DAILY COST	DAYS	AMOUNT	RELEASED TO/ TIME	JOB CODE	DOWN TIME
E-18	FORD PU	RENTAL	5/18	14	30	7/1 7/2-16		29.00	45 dftm, 15 iral	1276 dftm 435 mating dist	7/13 to district	S4OP04 FHOP54	6/19 U- JOINT
E-19	FORD PU	RENTAL	5/18	14	30	12		29.00	56	1624	7/13 frontline	S4OP04	
E-20	MAZDA PU	RENTAL	5/19	13	30	13		29.00	54	1566	7/13 1700 thirtymile fire	S4OP04	5/29-5/30 KEY
E-21	CHEVY PU	RENTAL	5/29	3	30	13		29.00	46	1334	7/13 1700 thirtymile fire	S4OP04	
E-22	DODGE BLUE DAKOTA	RENTAL	6/1	0	30	13		29.00	43.	1247	7/13 1700 thirtymile fire	S4OP04	
E-23	FORD RED RANGER	RENTAL	6/1	0	30	13		29.00	43	1247	7/13 1700 thirtymile fire	S4OP04	
E-24	CHEV 2500	RENTAL	6/2	0	29	10		29.00	32	928	Owner 7/10/01	S4OP04	6/29-7/3 FUEL LINE 7/8 OVER HEATING
E-25	CHEV S-10	RENTAL	6/2	0	29	7/1 7/2-16		29.00	30 15 iral	870 dftm 435 mating dist	District 7/18	S4OP04 FHOP54	6/17-6/18 SHIMMY
E-26	CHEV S-10	RENTAL	6/9	0	22	13		29.00	29	841	7/13 1700 thirtymile fire	S4OP04	6/17-18 LURCH 6/22-25 BATTERY CABLE
E-27	MAZDA PU	RENTAL	6/14	0	17	8		29.00	23	667	Owner 7/10/01	S4OP04	7/8 FAN BELT
										TOTAL \$11,600.00		S4OP04	
										TOTAL \$870.00		FHOP54	
										GRAND TOTAL	\$12,470.00		

Douglas-fir Tussock Moth Project Final Report July 2001 Methow Valley
 Appendices—Appendix D Logistics

ICS 218

MISC. RIGS

Support Vehicle Inventory

Type	Make	Location	FOR	COST	MO	MI/ COST	MI	AMT	DAILY COST	DAYS	AMT	Released To	Time
285-	BLANCH	COMO				20		120				HOME	USED PART-TIME
150-7149	LYNN	HELI	153		1	11	1800	351				HOME 7/13	
183-7158	STAKE TRUCK	WNP				17	900	153				HOME	USED PART-TIME
183-7154	STAKE TRUCK	WNP				17	110	18.70				HOME	USED PART-TIME
280-9147	RANGE	WNP				20	500	100				HOME	USED PART-TIME
POV	JENKINS	PIO				.345		651				HOME 6/10	
POV	KLECKNER					.345		1253				THIRTYMILE FIRE 7/10	
POV	ANDERSON A.					.345		500				HOME 7/15	
POV-	TROWBRIDGE					.345		609.27				HOME 7/11	
POV -	MCCONNELL					.345		800				HOME 7/17	
POV -	FOWELL					.345		200				HOME 7/2	
POV-	GROGAN					.345		330.51				HOME 6/14	
POV	PALMER					.345		400				HOME 7/14	
POV	HIGGINS					.345		500.25				HOME 7/13	
POV	PERKINS					.345		473				HOME 7/12	
POV	BRIDGWATER					.345		1500				HOME back/forth	
POV	BOSCH					.345		600				HOME 7/18	
POV	PHILLIPS					.345		111				HOME b/f	
POV	CATHCART					.345		500				ON PROJECT	
POV	MASTRUDE					.345		200				IDAHO	

Douglas-fir Tussock Moth Project Final Report July 2001 Methow Valley
 Appendices—Appendix D Logistics

Appendix D – 1

Following is a combined list of supplies that were returned to the LaGrande Cache. All items are to be stored for the Regional Entomology Projects that will be conducted in the future.

Items	Quantity	Items	Quantity
Aerial Spray Cards	5bx	“D” Flashlights	14 ea
Water Containers	10 ea	Jumper Cables	5
Hard Hats	21 ea	Tow Chains	2ea
Tarps	1 bx	Cruiser Vests	14 ea
Zahnvisosimeter	3ea	Electric Heater	1 ea
Anemometer	1 ea	Light Table	1 ea
Symmes Values	4 ea	Triangles(helispot)	4 ea
Fluorescent Light Bulbs	1 bx	Spray Indicator Card Holders	58 ea
Easel Paper	4 pad	Alum. Tags	300ea
Display Boards (dry erase)	4 ea	C Clamps	5 ea
Fire Extinguishers	3 ea	Goggles	2ea
Paper Bath Towels	1 bx	Electric Engraver	1 ea
Tent Fly w/stakes	1 ea	Plastic Sample Jars (8oz)	4 ea
Beating Sticks	47ea	Cloth Measuring Tapes	3 ea
Cloth Frames	34 ea	Falling Wedges	8 ea
Beating Clothes	74 ea	Red Spray Paint	8 ea
Spray Indicator Cards	3 bx	Propane Tank	1 ea
Calculators	8 ea	Field Filing Boxes	19 ea
Petri Dishes	500 ea	50’ Extension Cords	5 ea
Surge Protectors	2 ea	Orange Flagging	162 rolls
Wash Bottles	5ea	Pink Flagging	187 rolls
Small Coolers	4 ea	Green Flagging	24 rolls
No Smoking Signs	4 ea	Yellow Flagging	124 rolls
Partial Socket Set	1 ea	Clear Wrap	2 rolls
Spray Bottles	2 ea	Orange Cloth Bag	1 ea
Windshield Cleaners	2 gal.	Calculator Paper	22 rolls
Windex	1 gal	Paper staplers	11 ea
Misc. tools w/box	1 ea	Misc. Staplers	-----
Single Bit Axe	4 ea	3/8” HD Staples	24 bx
Bond Paper	2 rolls	Red Pencils	60 ea
“D” Cell Batteries	12 ea	Rubber Bands - Lg	7 pkg

Douglas-fir Tussock Moth Project Final Report July 2001 Methow Valley
 Appendices—Appendix D Logistics

Cache Inventory Continues

Items	Quantity	Item	Quantity
Staples	11 bx	Paper Cutters	3 ea
Gloves	9 sm	3-Ring Binders	6 ea
	6 med	Coolers (plug-in style)	6 ea
	1 lg.	Pruning Shears	71 ea
	6 xlg	Hand Cleaner	15 ea
Dissecting Needles	250 + ea	Misc. Vials	-----
Ind. First Aid Kits	8 ea	Easel	1 ea
Compasses	31 ea	Hand Counters	11 ea
Altimeter	2 ea	Air Bottles – Tri-max Ext.	5 ea
Blue Ice	10 ea	Microscope	1 bx
Tech Wipes	14 bx	Shovel	1 ea
ID Tags	500 ea	Pulaski	2 ea
Misc. Office Supplies	2 bx	Parachute Cord	1 roll
Nicad Battery Chargers	2 ea		

Supplies to Pre-Order Prior to Project

Items	Quantities	Items	Quantities
Floppy Disks	60 ea	Plotter Paper	6 rolls
Labels – Asst. Sizes	2 pkg ea	Printer Cart. (if known)	10 ea
Wooded Pencils	12 doz	Mech. Pencils	10 doz
Pens-Asst Colors	5 doz ea	8 1/2" x 11" Paper	10 bx
Scissors	5 ea	Asst Color Paper	3 rm
Write-in-Rain Books	30 ea	Allum. Tags (Ben Mdw)	600 ea
Post-It Notes Asst sizes	3 bx ea	Allum Nails	1000 ea
File Folders	4 bx	Plotter Mylar	5 rolls
Water Test Bottles	3 ea	3-hole Punch	2 ea
Clam Shells	48 ea	2-hole punch	2 ea
Dry Erase Markers	3 sets	5" x 7" 3-Ring Binders Min. 2" capacity	20 ea
Highlighters	10sets	Scotch Tape (sm)	15 rolls
Mole Skin			
Foot Powder			
Ziploc Bags – Asst Sizes	3 bx ea		
Filament Tape	10 rolls		

Douglas-fir Tussock Moth Project Final Report July 2001 Methow Valley
 Appendices—Appendix D Logistics

Appendix D-2



06-17-01

Debbie Vander Woude

Please insure that the following resource orders are released and/or transferred to 30-mile Fire as of the indicated dates:

Res#	Date Cancel	Resource Requested	Confirm Release
S-282	07-30-01	Carpet Cleaning	
S-289	07-30-01	Electric Bill	
S-205	07-18-01	Rental Rig Gas	
S-177	07-19-01	Janitorial Service (May)	
S-93	07-11-01	Phone Jacks	
S-85	07-11-01	Phone Service	
S-204	07-30-01	Tire Repair	
S-141	07-11-01	Monthly Phone Billing	
S-170	07-11-01	Janitorial Service	
S-94	07-11-01	Building Lease	
E-2	07-30-01	Suburban – District 3127	
E-3	07-11-01	Copier (ID 29385)	
E-18	-07-20-01	Ford PU- (Ret. Dist)	
E-19	07-13-01	Ford PU (front-line)	
E-20	07-20-01	Mazda PU-assigned E-61	30-mile fire
E-21	07-13-01	Chevy PU- assigned E-62	30-mile fire
E-22	07-13-01	Dodge Dakota-assigned E-63	30-mile fire
E-23	07-13-01	Ford Ranger-assigned E-64	30-mile fire
E-24	07-10-01	Chevy – pick-up	Rusty's
E-25	07-20-01	Chevy-S-10 (Ret. Dist)	
E-26	07-13-01	Chevy –S-10-assigned E-65	30-mile fire
E-27	07-10-01	Mazda –	Rusty's

Also the following District Equipment will be left at the work center until the end of project:

- 5 - IBM personal computers w/monitors
- 2 - Desks (old style)
- 4 - Typing tables
- 5 - Work tables
- 11 - Office chairs

E. Appendix – Air Operations and Contracting

2001 TUSSOCK MOTH - WINTHROP PROJECT/APPENDIX C-1								
Batch	Sample			Lot #				Total Gallons
Date	Batch #	038 Gal.	Block #	4	5	6	7	
7-Jun	1,2	363	M-82,M-113	150	15			165
								0
7-Jun	3	299	M-75	187			80	267
7-Jun	3	299	M-79	23			10	33
								0
8-Jun	1	163	M-82	150	15			165
								0
8-Jun	2	200	M-82	147				147
8-Jun	2	200	M-113	53				53
								0
13-Jun	1	212	M-39	210				210
								0
13-Jun	2	220	M-208	57	3			60
13-Jun	2	220	M-34	128	6			134
13-Jun	2	220	M-39	25	1			26
								0
13-Jun	3	220	M-34	210	10			220
								0
13-Jun	4	245	M-85	160	14			174
13-Jun	4	245	M-92	65	6			71
								0
13-Jun	5	250	M-65	225	25			250
								0
14-Jun	1	93	M-103		95			95
								0
15-Jun	1	289	M-91	78		17	13	108
15-Jun	1	289	M-19	132		28	22	182
								0
15-Jun	2	243	M-41	210		35		245
								0
16-Jun	1	150	M-83	35	15			50
16-Jun	1	150	M-87	70	30			100
								0
17-Jun	1	170	M-64	150	20			170
								0
17-Jun	2	164	M-64	150	15			165
								0
17-Jun	3	175	M-84		175			175

Douglas-fir Tussock Moth Project Final Report July 2001 Methow Valley
 Appendices—Appendix E Air Operations and Contracting

2001 TUSSOCK MOTH - WINTHROP PROJECT/APPENDIX C-1								
Batch	Sample			Lot #				Total Gallons
Date	Batch #	038 Gal.	Block #	4	5	6	7	
								0
17-Jun	4	175	M-84	85	2			87
17-Jun	4	175	M-20	85	3			88
								0
17-Jun	5	170	M-20		122			122
17-Jun	5	170	M-21		48			48
								0
18-Jun	1	170	M-53			35	135	170
								0
18-Jun	2	165	M-53			35	135	170
								0
18-Jun	3	184	M-12				29	29
18-Jun	3	184	M-18				151	151
								0
19-Jun	1	206	M-114	162				162
19-Jun	1	206	E-11	48				48
								0
19-Jun	2	159	M-46	5	50	105		160
								0
20-Jun	1	221	M-93	103	5			108
20-Jun	1	221	M-86	107	5			112
								0
20-Jun	2	186	M-38		5		180	185
								0
20-Jun	3	144	M-62		140			140
								0
22-Jun	2	145	M-253		10		135	145
								0
22-Jun	3	114	M-80	20			90	110
								0
22-Jun	4	206	M-102		5	20	180	205
								0
23-Jun	1	213	M-33			35	180	215
								0
23-Jun	2	200	M-11	105			90	195
								0
23-Jun	3	161	M-11		30		135	165
								0
23-Jun	4	161	E-15		12		53	65
23-Jun	4	161	E-30		18		82	100
								0
23-Jun	5	214	M-78		30		180	210

Douglas-fir Tussock Moth Project Final Report July 2001 Methow Valley
 Appendices—Appendix E Air Operations and Contracting

2001 TUSSOCK MOTH - WINTHROP PROJECT/APPENDIX C-1								
Batch	Sample			Lot #				Total Gallons
Date	Batch #	038 Gal.	Block #	4	5	6	7	
								0
24-Jun	1	197	W-2	14			12	26
24-Jun	1	197	W-11	28			24	52
24-Jun	1	197	W-94	63			54	117
								0
24-Jun	2,3	353	M-81				137	137
24-Jun	2,3	353	M-77				223	223
								0
24-Jun	4	301	M-52			7	59	66
24-Jun	4	301	M-60			10	76	86
24-Jun	4	301	M-61			18	135	153
								0
24-Jun	5	296	M-47		12		124	136
24-Jun	5	296	M-54		10		108	118
24-Jun	5	296	M-55		3		38	41
								0
25-Jun	1,2	291	M-22	150				150
25-Jun	1,2	291	M-8	150				150
								0
25-Jun	3,4	268	M-63	130				130
25-Jun	3,4	268	E-29	135				135
								0
25-Jun	5	296	M-90	47		8	10	65
25-Jun	5	296	M-108	158		27	35	220
								0
25-Jun	6	315	M-108	315				315
								0
25-Jun	7	316	M-108	315				315
								0
26-Jun	1	195	M-209		36		32	68
26-Jun	1	195	M-210		33		30	63
26-Jun	1	195	M-211		31		28	59
								0
26-Jun	2	206	M-23		137			137
26-Jun	2	206	E-37		73			73
								0
28-Jun	1	285	M-101	32				32
28-Jun	1	285	M-104	256				256
								0
28-Jun	2	284	M-101	27				27
28-Jun	2	284	M-104	8				8

Douglas-fir Tussock Moth Project Final Report July 2001 Methow Valley
 Appendices—Appendix E Air Operations and Contracting

2001 TUSSOCK MOTH - WINTHROP PROJECT/APPENDIX C-1								
Batch	Sample			Lot #				Total Gallons
Date	Batch #	038 Gal.	Block #	4	5	6	7	
28-Jun	2	284	M-116	102				102
28-Jun	2	284	M-117	76				76
28-Jun	2	284	E-28	67				67
28-Jun	3	201	M-59	38				38
28-Jun	3	201	M-9	152	10			162
28-Jun	4	202	M-9	96	5			101
28-Jun	4	202	M-10	95	4			99
28-Jun	5	206	M-13	190	10			200
								0
29-Jun	1	229	M-6	166				166
29-Jun	1	229	M-7	59				59
29-Jun	2	229	M-6	166				166
29-Jun	2	229	M-7	59				59
29-Jun	3	282	M-212	179				179
29-Jun	3	282	M-56	30				30
29-Jun	3	282	M-57	19				19
29-Jun	3	282	W-5	57				57
								0
30-Jun	1	181	M-66	180				180
30-Jun	2	238	M-26	36				36
30-Jun	2	238	M-106	204				204
								0
6-Jul	1	143	M-31	135	10			145
								0
6-Jul	2,3	197	M-37	105				105
6-Jul	2,3	197	M-97	75	10			85
								0
9-Jul	1	164	M-14	100				100
9-Jul	1	164	M-40	65				65
								0
								0
								0
								0
								0

HOW TO CONVERT THE SPRAYBLOCKS TO WGS 1984 LAT/LONG COORDINATES

DC means to double click the left side of the mouse


Create, build, and populate the polygons in Arcinfo. If you are using PC Arcview, then copy those files and the corresponding info files to your C drive. I would suggest using PC Arcview as it runs much faster.



Click **ARCVIEW** (icon with a magnifying glass). An “Arcview GIS” window appears with a “Welcome to Arcview GIS” window in front.


At the “Welcome to Arcview GIS” window in front. Click “Open an Existing Project”. If this is the first time in the project then you will create a new project. Set the working directory so the file opens to it every time you open it. Save this project in an accessible place. Also create a folder called shapes. This is a good place to put all your shape files that you create.

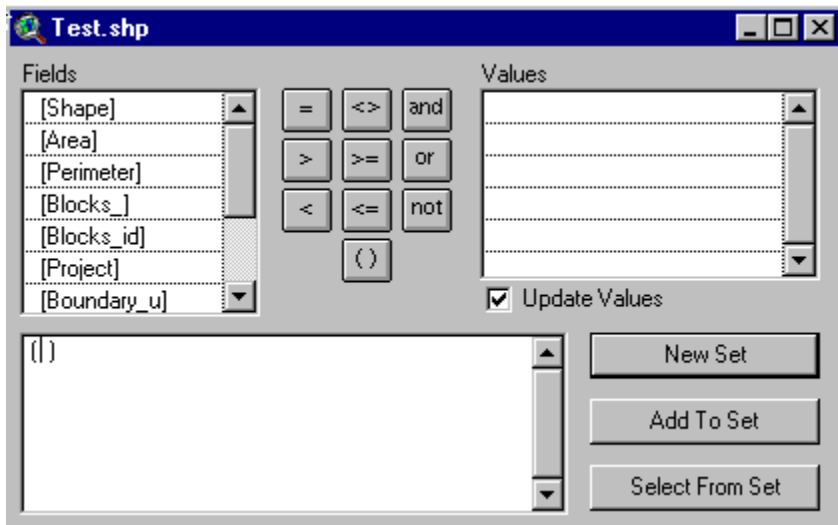
If this project is already created on your C: drive, then Click **OKAY**. An “Open Project” window appears. In the right box navigate to the directory where your files are stored. In the left box navigate to the .APR file. Leave the “Data Source” box as is. Click **OKAY**. The .APR should open, but it may take a while. You

may get a window that reads “*****.apr”. There are icons to the left, with a “views” icon () at the top. You want to open the view that you are using to create your shape files in. Click **OPEN** or DC the view and it will open. You now have the map of the spray blocks. The top of the screen has the following menu bar:



(continued next page)

Now you need to convert the theme to a shape file. **Click** the hammer . A table will appear:



Scroll down in the “fields” side to the name of your spray block cover and DC. The fields are the attributes you used in ARCINFO to populate the polygons with. Choose the boundary unit or analysis block depending on what shape file you want to create. **Click “=”**. Scroll down the “values” side to the spray block number you want. *HINT: the spray blocks are alphanumeric. DC the SPRAY BLOCK #.* **Click NEW SET**. The block(s) should turn yellow. I would do one block at a time unless you have been told that some blocks are to be clustered. Close the table window by clicking the “X” in the upper right corner.

Click THEME on the top menu bar. **Click CONVERT TO SHAPEFILE**. A “Convertshp” window appears. Navigate to your shape folder. Type the block # in the box in the upper left (example: m104.shp) and **Click OK**. You will be asked if you want to add the shape file as a theme to the view. **Click YES**. The theme is added to the left of the map. **Click** in the shadow box to the left of the name. You should see a black checkmark and the theme will turn on.

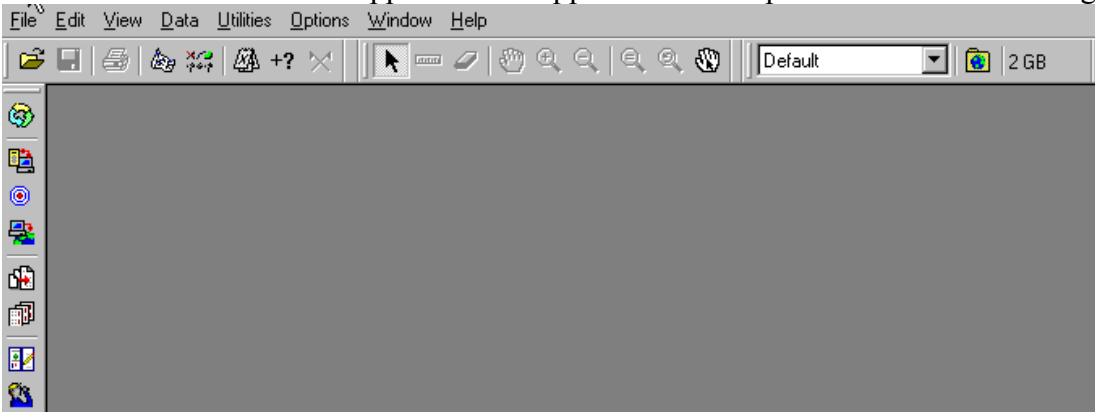
Continue this procedure until all the blocks you need for the day are converted to a shapefile

DC the **PATHFINDER OFFICE** icon to open the program. A “**Select Project**” window appears. You might have to create a new project if this is the first time you have been in the program. If so, click new. A “**Projects Folder**” window appears. Type the project name and **tap ENTER**. Then **click OKAY**.

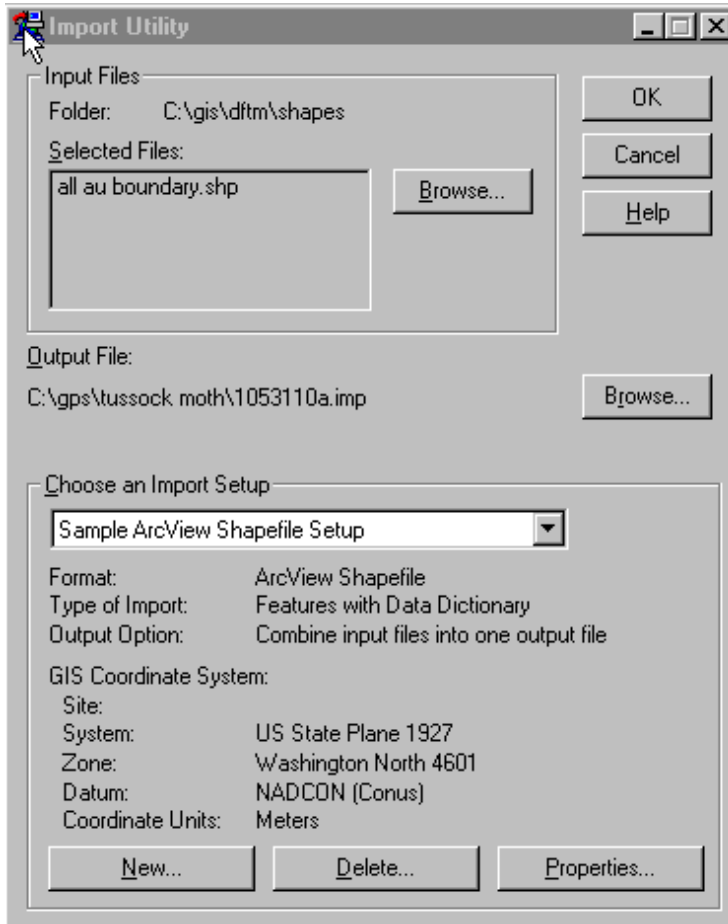
If the project already exists in Pathfinder Office, then **Click the project’s name**. **Click OKAY**. **IF** the “**Project Folders**” window **DOES NOT** appear, then: **Click FILE**. **Click PROJECTS**. A “**Select Project**” window appears. **Click the project and click OKAY**.

The screen will look like this:

Douglas-fir Tussock Moth Project Final Report July 2001 Methow Valley
Appendices—Appendix E Air Operations and Contracting



Click UTILITIES. Click IMPORT. It is near the bottom. An “Import Utility” window appears.



Click the top BROWSE button. A “select gis data files” window appears. Click the drop down menu arrow to the right of the “look in” box. Click GIS

Click the project folder you created. Click your SHAPE folder. Click the file(s) you want to import (example m104.shp or select all of them). Click OPEN. Click the lower BROWSE button. A “Specify Output File” window appears. Type the spray block # (m104) in “filename” box. If you forget, the software will name it for you. Click SAVE. **THE LOWER PROTION OF THE BOX SHOULD READ EXACLTY LIKE THE ABOVE “IMPORT UTILITY” BOX SHOWS!!!!!!!!!!!!!!**

You want to import as a sample Arcview shapefile setup. The coordinates should read:
System: US stateplane 1927
Zone: Washington north 4601
Datum: Nadcon

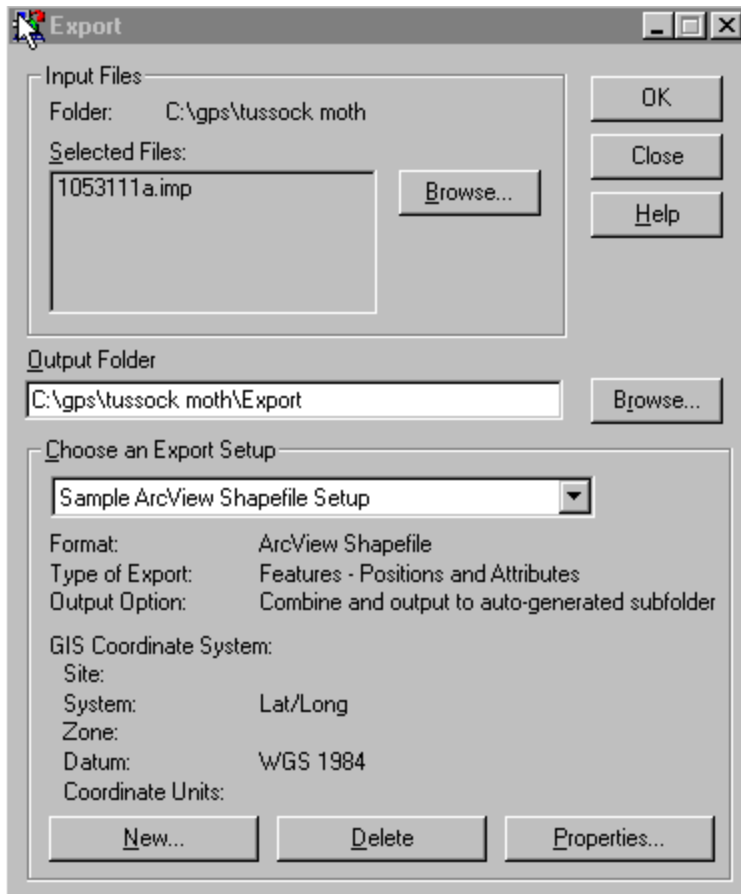
Douglas-fir Tussock Moth Project Final Report July 2001 Methow Valley
Appendices—Appendix E Air Operations and Contracting
Coordinate System: Meters

If it does not then, click PROPERTIES. **SET UP ALL THE COORDIANATES SO THAT THEY MATCH THE ABOVE MENTIONED.** There will be a progress bar that runs for a minute or so. An **“Import Completed”** box appears. Read the text to ensure that you imported a file. If the import completed successfully, then close the import window. If not, then try to import the file again.

(Continued next page)

Once you have all the shapefiles imported you need to export them.

Click **UTILITIES**. Click **EXPORT**. It is near the bottom. An **EXPORT UTILITY** window appears:



Click the top **BROWSE** button. A “select gis data files” window appears. Click the **drop down menu arrow** to the right of the “look in” box. Navigate to your GIS project directory with the shapefiles. Click the **file(s) you want to export** (example m104.imp). Click **OPEN**. Click the lower **BROWSE** button. A “Specify Output File” window appears. Type the spray block # (m104) in “filename” box. If you forget, the software will name it for you. Click **SAVE**.

THE LOWER PROTION OF THE BOX SHOULD READ EXACLTY LIKE THE ABOVE “EXPORT UTILITY” BOX SHOWS!!!!!!!!!!!!!!

You want to export as a sample Arcview shapefile setup.

The coordinates should read:

System: lat/long

Datum: WGS 1984

If it does not then, Click **PROPERTIES**. SET UP ALL THE COORDIANTES SO THAT THEY MATCH THE ABOVE MENTIONED. There will be a progress bar that runs for a minute or so. An “**Export Completed**” box appears. Read the text to ensure that you exported a file. Look where it was put (the file extension). Read the text to ensure that you imported a file. If the import completed successfully, then close the import window. If not, then try to import the file again.

IF ALL WENT WELL, YOU CAN PUT A DISC IN THE A DRIVE AND COPY THE SHAPEFILE TO IT. YOU WILL HAVE TO NAVIGATE TO YOUR PROJECT’S GPS ECPORT

FOLDER. ONCE THERE YOU WILL HAVE TO OPEN THE FOLDER THAT HAS THAT DAYS DATE ON IT (O61213A). THE FILE READS FUNNY. IT GOES LIKE THIS:

MONTH: 06

DATE: 12

HOUR: 13

SEQUENCE IN THAT HOUR: A

COPY THE .SHP FILE TO THE FLOPPY.

YEAH, YOU ARE ALL DONE NOW. happy spraying!!

**TUSSOCK MOTH SPRAY PROJECT
PROJECT SAFETY AVIATION PLAN**

Okanogan-Wenatchee National Forests

Project Plan Prepared by: Jim Trowbridge AFMO, Cle Elum Ranger District

Project Plan Reviewed by: Art Anderson Spray Project Operations Chief

Project Plan Reveiwed by: _____ Aviation Officer, Okanogan-Wenatchee NF's
Reviewed Date: _____

Project Plan Reviewed by: _____ Regional Aviation Group Staff
Reviewed Date: _____

Project Plan Reviewed by: _____ Regional Aviation Safety Officer
Reviewed Date: _____

Project Plan Approved by: _____ Regional Aviation Officer
Approved Date: _____

TUSSOCK MOTH SPRAY PROJECT PROJECT SAFETY AVIATION PLAN

Okanogan-Wenatchee National Forests

4 February 2002

Project Name: Tussock Moth Spray Project

Anticipated Project Date: June and July 2001

Supervision: Art Anderson, Tussock Moth Spray Project Operations Chief

Project Description:

The project is the aerial application of tm biocontrol to control Douglas-fir tussock moth on the Methow District of the Okanogan-Wenatchee National Forests. An End Product Contract will be used to complete this project. Helicopters will apply the pesticide and observe the area being treated. At this time it is anticipated that three (3) type II and one (1) type III helicopters will be needed to complete the project. It is estimated 25,000 to 27,000 acres will be sprayed.

The spray blocks will be pre-identified using GPS coordinates and will be entered into a mapping program installed into the spray aircraft as per the contract. No aerial marking will be required as the application aircraft shall be equipped with a GPS guided Satlock swathing system. The application aircraft will fly in formation at altitudes below 500 ft. AGL (actual height will depend on timber canopy and topography) to dispense pesticide, no government employees will be onboard. The observation aircraft with government employees onboard, will follow behind the application aircraft to ensure that the spray is falling properly in to the canopy, and that the spray deposition is effective and properly applied. Additional duties of the observation aircraft will include flight following information for all of the aircraft involved and overall supervision of the actual application process.

All helispots and emergency landing sites will be identified prior to operations. The Helibase Manager, along with the Contractor, will be responsible for approving all helispots prior to use.

Justification:

Due to access, aerial application is the most effective way to accomplish the project. Limited road access and steepness of terrain prevents application by alternative ground methods.

Due to the nature of spraying, low level flights are necessary to get the spray to hit the target areas (crowns and foliage of trees). Spray aircraft must consistently operate at altitudes below 500' AGL.

Location:

The project is located on the Okanogan-Wenatchee National Forests, Methow Valley Ranger District. The analysis areas to be included in the project are Early Winters, Eight Mile, and Wolf Creek. (see attached map)

Projected Cost of Aviation Resources:

Source selection of potential contractors has not been completed at this time. Project Aviation Safety Plan will be updated once source selection is completed to include the projected aircraft and associated costs.

Douglas-fir Tussock Moth Project Final Report July 2001 Methow Valley
Appendices—Appendix E Air Operations and Contracting

Aircraft:

At this time it is anticipated that three (3) type II and one (1) type III helicopters will be needed to complete the project. Project Aviation Safety Plan will be updated once source selection is completed and aircraft are known.

Application aircraft will be required to meet industry and O.S.H.A. standards. The contractor will be required to be in compliance with Part 137, State AG/Application requirements and licenses. Application aircraft will be carded as per the “Restricted” category guidelines in the USDA-Forest Service Call-When-Needed (CWN) contract.

All “Standard Use” helicopter requirements as per the USDA-Forest Service Call-When-Needed (CWN) contract and IHOG will be adhered to for the observation aircraft, pilots, fuel trucks and drivers.

Application aircraft fueling operations will be adhered to as per IHOG chapter 13.

Hot fueling will be allowed if one of the following regulations are met.

1. Page 12-13, c. 1., Closed circuit refueling system is present and approved on the aircraft, aircraft may be refueled with engines running or
2. Page 12-13, c. 2., Open Port (rapid refueling); If requested by the government and the contractor has been approved, this type of refueling can be allowed in accordance with NFP 407 3-27, see agency policy. Not with standing NFPA 407 3-21.2 (b).

Pilots:

Application pilots will be required to meet industry and OSHA standards. The contractor will be required to be in compliance with part 137, State AG/Application requirements and licenses. Agency carded pilots will not be required for the application aircraft. Pilots for the observation aircraft will be carded as per IHOG.

Project Aviation Safety Plan will be updated once source selection is completed and pilots and aircraft type are known.

Participants:

Project aviation safety plan will be updated prior to project commencing with all personnel, including qualifications and individual’s project responsibilities..

A CWN Helicopter Manager will be required for each helicopter (as stated in the IHOG page 2-4) per counsel from the Regional Helicopter Operations Specialist. However, application aircraft management will require no payment documentation (FS-6500-122), no personnel loading, no external or internal cargo loading, and no longline operations.

The helibase will be managed by the appropriate level (Type 1 or 2) Manager (as stated in the IHOG page 2-6). The helibase manager will be responsible for daily briefing and debriefing (using the checklist in IHOG Appendix B) and for development and approval of a Project Crash Rescue Plan. The helibase manager will also be responsible to ensure a **SAFECOM** will be filed to report any condition, act, maintenance problem, or circumstances which has the potential to cause an aviation related accident for all incidents/occurrences and deviations. Copies will be filed with the local Forest Aviation Officer and placed in the project files.

Flight Following and Emergency Search and Rescue:

Daily flight follow during the project will be handled through the project dispatcher. When the observation aircraft is observing aerial application, the aerial observer will be responsible for flight follow information, relaying it to the project dispatcher.

Prior to installation of the project communication system or flights outside the project area flight following of aircraft is required and will be through Okanogan dispatch Center on the Okanogan-Wenatchee Forests or Central Washington Interagency Communication Center (CWICC) in Wenatchee. Specific flight following frequencies will be determined and distributed to all operations personnel at project operations briefings and dispatch centers.prior to spray operations.

Pacific Northwest Region Search and Crash Rescue Guide will be used as a template for missing or downed aircraft. Project Incident Commander, Aviation Project Manager, Project Dispatcher, and Okanogan Dispatch Center will all be responsible for the follow through of this plan if needed.

Douglas-fir Tussock Moth Project Final Report July 2001 Methow Valley
Appendices—Appendix E Air Operations and Contracting

Aerial Hazard Analysis:

Aerial hazard map will be generated prior to starting of any spray operations. Initial aerial hazard map will be obtained from the Okanogan Dispatch Center. Verifications and updates will be coordinated with the Okanogan Dispatch Center and Methow Valley Ranger District prior to spray operations.

A copy of the hazard map will be provided to contractor, all pilots and posted at the helibase (or location of morning briefings). All necessary coordination with Federal Aviation Administration and military authorities will be coordinated through the Okanogan Dispatch Center prior to project start.

Known Military Training Routes (MTR) within the proposed project area are:

IR-348

Okanogan B MOA

Protective Clothing/Equipment:

Personnal protective equipment will be required for all pilots (both “Restricted” and Standard Use” helicopters) and passengers according to Chapter 9, IHOG. This includes flight helmets, nomex clothing (either nomex flight suits or nomex shirt and pants), and nomex or leather gloves.

Load Calculations and Weight-and Balance:

Load calculations will be completed to ensure that the helicopter does not exceed its capabilities. The pilot is responsible for accurate completion of load calculations. The helicopter manager and helibase manager will be responsible that load calculations are completed properly and posted daily.

**TUSSOCK MOTH SPRAY PROJECT
 OKANOGAN-WENATCHEE NATIONAL FORESTS
 FY2001**

RISK ANALYSIS

METHOD	Yes or No
1. Is there an alternative method which would accomplish the mission more safely and/or efficiently (including accomplishment by ground methods)?	NO
2. Is the method selected approved and do detailed instructions for safe accomplishment exist?	YES
3. Have adequate flight following and communications methods been established?	YES
MEDIUM	
1. Can factors of terrain, altitude, temperature, or weather which could adversely affect the mission's success be mitigated?	YES
2. Will the mission be conducted at low (below 500' AGL) altitudes – can the same objective be Achieved by flying at a higher altitude AGL's	YES
3. If low-level flights, have all known arial hazards been identified during the planning process And are they known to all participants?	YES
4. If there is a potential for an airspace conflict (military, media, or sightseeing aircraft), have mitigating measures been taken?	YES
5. Have adequate landing areas been identified and/or approved to minimum requirements?	YES
MAN (GENERIC)	
1. Is the pilot properly carded for the mission?	YES
2. Will the flight be conducted within the Pilot flight time/duty day requirements and limitations?	YES
3. Have the minimum number of personnel necessary to accomplish the mission safely been Assigned, and do they meet personnel qualifications and experience requirements?	YES
4. Will adequate personnel (flight and ground crew) and Pilot briefings be conducted prior to the flight?	YES
5. Are users aware that the Pilot-in-command has the final authority over any operations Conducted involving the aircraft or its occupants?	YES
MACHINE	
1. Is the aircraft capable of performing the mission in the environment (altitude, temperature, Terrain, weather) where the operation will be conducted?	YES
2. Is the aircraft properly carded for the intended mission?	YES

**TUSSOCK MOTH SPRAY PROJECT
 OKANOGAN-WENATCHEE NATIONAL FORESTS
 FY2001**

JOB HAZARD ANALYSIS

HAZARD	MITIGATING MEASURE
MTR'S/MOA'S	Check routes in advance. Coordinate with Okanogan Dispatch for risk mangement.
Private Aircraft	See and Avoid. Post signs at local Airports of operation plans.
Airport Traffic	Monitor UNICOM. See and Avoid.
Weather	Obtain daily weather forecasts, be aware of weather advisories.
Terrain	Do not place aircraft in performance related situations. Make sure Pilots are familiar with spray blocks and terrain.
Low Level Obstacles	Perform a high level reconnaissance before descending below 500' AGL prior to spray operations to identify any previously unidentified obstacles from hazard maps. No unnecessary low level flights.
Unimproved Landing Sites	Recon landing sites prior to operations, identify as many potential emergency landing sites and place on operation maps.
Flight Operations With Doors Off	Use approved harness/straps. Remove loose items in cabin. Secure anything that cannot be removed.
Pilot Not Familiar With Area	Perform a high level reconnaissance before descending below 500' AGL Provide project and hazard maps to each Pilot.
Noise, Rotor Wash	Wear ear and eye protection (IHOG Chapter 9).
Internal and External Loads.	Have qualified and trained personnel assigned to those missions.
Unplanned Aircraft Events	All personnel equipped with proper PPE and trained in crash rescue procedures. Crash rescue plans given to and reviewed by all personnel and posted at helibase (or other appropriate briefing location).
Hazardous Materials	Material Safety Data Sheets provided and reviewed by all personnel. Only trained personnel will handle hazardous materials spill. Contractor is responsible for clean-up of all spills.
Non-Aviation Personnel	Thorough briefings provided to all personnel (IHOG Chapter 10).
Communications	Daily radio checks prior to departing helibase. Develop alternatives in case designated frequenciey become inoperable. Cease operations any time communications fail.

F. Appendix -- Entomology

No additional information

G. Appendix -- Monitoring

No additional information

H. Appendix – Project Planning

PROJECT PLANNING AND OPERATIONS SCHEDULE

Date	Activity	Person Responsible	Location
Sept./Oct	Prepare monitoring plan for wildlife items.	Kent Woodruff, Wildlife	Winthrop
Nov./ Dec.	Develop specific monitoring design and review	Kent Woodruff, Wildlife	Winthrop
January	Review of monitoring plan by Wenatchee Lab Scientists and Regional experts	Kent Woodruff, Wildlife	Winthrop
2/14-2/15	C&GS Meeting (Develop Team Objective)	All	Wintrop
MARCH			
3/13-3/17	C&GS Meeting (Map Spray Blocks)	All	Winthrop
3/21	Identify Deputy Entomologist Section Chief	Connie Mehmel, ESC	
3/22	Send Internal Outreach	Sharon Cathart, FSC	
3/24	Spray Block Maps Completed	Connie Mehmel, OSC Art Anderson, OSC	Winthrop
3/27	Temporary Vacancy Announcement Opens		
3/28	Contract Request for Proposals Open		
APRIL			
4/1	Wildlife monitoring crew on board. Orientation and field work begins	Kent Woodruff, Wildlife	Winthrop
4/08	Evaluation Panel Reviews Contract Proposals	Art Anderson, OSC Carl Culham, CO	
4/14	Supply List Completed and Submitted to Jim Hammer	All	
4/24-4/25	C&GS Meeting (Tactical Issues and Operation Plan)	All	
4/27	Project Plan Chapters Sent To Arlo	All	
4/27	Temporary Requests & 52 Packages	Sharon Cathart, FSC	
4/27	Lodging and ICP Location Confirmed	Jim Hammer, LSC	
MAY			
5/1	Edited Operations Plan to IC for Review/Approval	Sharon Cathart, FSC	
5/7	C&GS/RD Meeting at Winthrop Work Center (1300)	All plus RD personnel	
5/7	C&GS “Check In” (Winthrop Work Station)	All	Winthrop
5/7	Entomology Crew “Check in” and Training	Entomology Crews	Winthrop
5/7	C&GS Meets Crews (Orientation)	C&GS (most)	Winthrop
5/16	Entomology Crew Training (Continued from 14 th)	Entomology Crew	Winthrop
5/18	Repeaters Set Up	Logistics	Winthrop
5/22	Host Type Confirmation – Helicopter	Art Anderson, OSC	
5/27	Start Local Press Release On Incident and Project	Information Officer	All Locations
JUNE			
6/4	Helibase Mgr, Dep. Spray Ops., Air Observer “Check In”	Spray Operations	Winthrop
6/11	Spray Operations Crew (Report to work full time)	Spray Operations	Winthrop
6/12	Spray Operations/ Contract Coordination Meeting	Operations	Winthrop
6/12	Miscellaneous Overhead (Reports to Work Full Time)	General Staff/Logistics/Finance	Winthrop
6/12	1 st Spray Blocks Released	Entomology	Winthrop
6/13	Dry Run Spray Day	Operations	Winthrop
6/18	Spraying Begins	Operations	Winthrop
6/20	Media Day	Judy Wing, IIO Art Anderson, OSC	Winthrop
JULY			

Douglas-fir Tussock Moth Project Final Report July 2001 Methow Valley
 Appendices—Appendix F Entomology

Date	Activity	Person Responsible	Location
7/9	Spraying Complete	Operations	Winthrop
7/9	Spray Operations Demobilize	Operations	Winthrop
7/10	Initial monitoring accompanied report to IC and team	Kent Woodruff	Winthrop
7/13	Demob of “Surplus” Resources	All	Winthrop
7/30	Complete wildlife monitoring baseline work. Begin reporting process and prepare for 2003 data collection	Kent Woodruff	Winthrop
	Post Spray Sampling Complete – 28-day	Entomology	Winthrop
	Post Spray Sampling Complete – 35-day	Entomology	Winthrop
	Temporary Employees (Terminated or Placed)	Entomology	Winthrop
	Projects Demobilized Draft Project Reports Completed	Entomology	Winthrop
Nov. 20	Initial budget notification and request for 2003 monitoring	Kent Woodruff, Wildlife	Winthrop
Nov. 30	Complete Data Analysis	Kent Woodruff, Wildlife	Winthrop
Dec. 30	Final wildlife monitoring report for 2001. Final monitoring plan for 2003	Kent Woodruff, Wildlife	Winthrop

Douglas-fir Tussock Moth Project Final Report July 2001 Methow Valley
 Appendices—Appendix I Safety

I. Appendix – Safety

APPENDIX F - 1

FS-6700-7 (2/98)

U.S. Department of Agriculture Forest Service		1. WORK PROJECT/ACTIVITY Field Work	2. LOCATION Okanogan/Wenatchee N.F.	3. UNIT Tussock Moth Spray Project
JOB HAZARD ANALYSIS (JHA) References-FSH 6709.11 and -12 (Instructions on Reverse)		4. NAME OF ANALYST D. Wayne Wilson	5. JOB TITLE Project Safety Officer	6. DATE PREPARED April 5, 2001
7. TASKS/PROCEDURES		8. HAZARDS	9. ABATEMENT ACTIONS Engineering Controls * Substitution * Administrative Controls * PPE	
Field Work	Foot Travel in Forest Terrain	<p>Wear comfortable foot wear (heavy socks and 8-10 inch high leather laced boots) that properly fit the foot. Boots should have a slip-resistant sole and heel such as provided by Vibram soles.</p> <p>Always make sure of secure footing and safe working positions. Walk--never run--down slopes. Watch your step! Ground surface conditions coverings and topographic relief can all contribute to changing footing conditions and the possibility of slips and falls. Work supervisors shall advise crews of particular terrain conditions and precautions to avoid falls and injuries. Rocky slopes, especially slide rock and steep country, are treacherous. Have one hand free, preferably on the uphill side, for protection against falls or obstructions. Always carry tools on downhill side.</p> <p>Always be on the guard against injury from falling trees, snags, limbs, rolling logs, or rocks. Look up in the tree canopy, periodically, as well as on the ground while walking, and avoid walking under wind fallen or broken trees that are caught up in the canopy. These can be very dangerous.</p> <p>When contouring a steep slope, maintain an erect posture or slightly leaning out to insure a more secure footing. Make sure stepping surface is solid and stable before placing full body weight onto the foot. Step over logs, never on them, unless caulk boots are worn. Never step on logs with loose bark, even when wearing caulk boots.</p> <p>In heavy undergrowth, lift your knees high to clear obstacles. Slow down and exaggerate steps in the area of exposed roots of "jack-strawed" bark beetle-killed lodgepole pines to keep from tripping and falling.</p> <p>On slippery, loose ground, or going downhill, keep most of your weight on your heels. Shorten your stride, keep knees bent, and lean slightly backward.</p>		
Field Work	Getting Lost	<p>When moving uphill or in sandy soils, lean slightly forward, turn feet outward, shorten stride, and use as much of the inside of the foot as possible.</p> <p>Never travel or work alone in isolated areas without an emergency plan and radio. Leave an itinerary of planned trip with family and immediate supervisor or other employee when it is necessary to travel or work alone.</p> <p>When traveling in backcountry it is important to carry plenty of water, and have a first-aid kit available. In addition, make sure you have a compass, map, pocket knife, hand axe, matches in waterproof container, flashlight, day's supply of food, raingear or poncho, extra set of dry clothing, a lightweight shelter or space blanket, and snakebite kit, if in snake country.</p> <p>If you become lost, keep calm, don't panic. Select a warm shelter. Shelter, warmth and liquids are much more important than food. Select sheltered spot and prepare camp, shelter, and firewood well before dark. Check the surrounding country and attempt to orient yourself. Do not walk aimlessly. Carry and trust the map and compass. If you can reach a road, trail, or telephone line, follow it until you can determine you are moving in the right direction. As a last resort, travel downhill parallel to a stream or drainage--roads eventually cross drainages and traveling down a less-travelled road usually always will lead to a more heavily traveled road and increase the likelihood of someone finding you soon. If unsuccessful in attempts to find your way, stay in one place, conserve your strength, and build a fire so that smoke may be seen by searchers. If signal mirror or portable radio is available have ready for immediate use.</p>		
	Stream or Creek	<p>Crossing creeks are hazardous under the best conditions. Creek bottoms are always slippery and with the water current added, losing your footing is a common occurrence.</p>		

Douglas-fir Tussock Moth Project Final Report July 2001 Methow Valley
 Appendices— Appendix J Public Information Plan

	Crossings	<p>Another hazard associated with creek crossings is when dry weather reduces water flow making crossings easy in the morning, however with rain during the day, the same crossing may become a raging torrent capable of sweeping an adult away. Caulk boots are not effective on rocks and are a poor alternative to rubber boots in these terrain conditions.</p> <p>Hypothermia is another hazard associated with creek crossings. Spare clothing carried in your pack can help minimize this hazard. Caution, attention to weather conditions, and common sense are the best tools for safe creek crossings.</p>
Field Work	Rain	<p>Getting caught in the woods without raingear can be a miserable experience. The real danger of not having raingear is <i>hypothermia</i>. Hypothermia can be, and often is fatal. Layering your clothing is the most effective way to dress for the woods. Clothing can be shed as you exert yourself and put back on as you cool down. Wool or polypropylene clothing is preferred due to its ability to provide thermal insulation while wet. Goose down is ineffective once it becomes wet.</p>
	Snow, Freezing Weather, Cold Temperatures, and Adverse Conditions	<p>As with rainy conditions, hypothermia is a major threat in snowy and/or freezing conditions. Layering of clothing is the most effective way to maintain a steady body temperature as you exert and rest.</p> <p>One hazard associated with snow conditions are snow bridges. A snow bridge is formed when heavy snows fall on criss-crossed down logs. The snow fills in the gaps between the logs and gives the appearance of solid ground. Falling through the gaps causes leg joints to bend in directions they were not designed to bend. Testing the ground before you walk in areas you suspect to have snow bridges is the best preventative measure.</p> <p>Frozen ground is another hazard associated with freezing weather. When the ground is frozen it is difficult to dig your heel into the slope to gain support, also falling on frozen ground is like falling on concrete. Steep terrain and snow make a dangerous combination, especially when wearing raingear. The raingear tends to act as a "toboggan" and you can quickly slide out of control.</p> <p>Always carry PPE for changing weather conditions, such as rain gear, a wool hat, sweater, jacket, and dry socks. The chance of rain and/or cold increases for every day there is warm, dry weather and conditions can change hourly in mountainous areas. Listen to weather forecasts and plan field work accordingly.</p> <p>The following are key items for winter survival:</p> <ol style="list-style-type: none"> (1) Get adequate rest. (2) Dress in layers of loose clothes, cotton, polypropylene or wool underneath, waterproof material on top. Be sure to cover hands, feet, neck and head. (3) Keep active to maintain body metabolism and high body temperature. (4) Prevent dehydration by drinking warm water. Avoid caffeine. (5) Eat balanced meals with high energy snacks in between. (6) Always travel in pairs as a minimum. (7) If camping out, prepare for night (shelter and firewood) before dark.
Field Work	Lightning and High Winds	<p>Although most common in the summer, thunder and lightning can occur anytime. If caught in a storm near the vehicle, return to the vehicle and stay inside while the storm is most active. Park vehicle in an open area away from trees. Turn off radios during the storm. Lightning is more likely to strike when radio transmission occurs. After the storm passes, turn forest radio on and check in with dispatch. If caught in a storm away from your vehicle, try to find some form of building or shelter. Do not seek shelter under large trees or open areas. Stay off ridge tops and mountain tops. Seek shelter in low lying areas such as a ditch or cave.</p> <p>The main hazards associated with windy conditions are falling, snapped-off treetops from healthy trees and dead snags, and branches falling out of trees, often unexpectedly. Even a small branch when falling out of a 150 foot tree can cause serious injury or death. Wear your hardhat at all times! Extreme winds can blow down large tracts of timber in short periods of time. Listen to the weather forecast each day and avoid traveling in the woods on days of predicted high winds. If high winds were not predicted by occur anyway, move to open ground, such as meadows and other clearings, to avoid falling debris.</p>
	Hypothermia	<p>Most hypothermia cases develop in temperatures between 30 to 50 degrees F, usually on a cold, wet windy day. Hypothermia occurs when the body core temperature is lowered leading to mental and physical collapse. Other factors that can cause or aggravate hypothermia include injuries, immobilization, immersion in water, lack of proper clothing or shelter, and fatigue.</p> <p>SYMPTOMS: Feeling cold, pain in extremities, shivering, numbness, muscle stiffness (especially in the neck, arms, and legs), poor coordination, drowsiness, slow or irregular breathing and heart rate, cool skin, and puffiness in the face. Thinking processes slow down and victims become apathetic and disagreeable.</p>

Douglas-fir Tussock Moth Project Final Report July 2001 Methow Valley

Appendices— Appendix J Public Information Plan

		Slurred speech and loss of vision are reported just prior to terminal coma.
		TREATMENT: 1) Call for medical help. 2) Give artificial respiration if needed. 3) Move into a warm area. 4) Get out of frozen, wet, or tight, clothes. 5) Bundle in warm clothes or blankets. 6) Drink something warm, not hot (no caffeine or alcohol).
	Frostbite	CAUSE: exposure of unprotected flesh to subfreezing temperatures. SYMPTOMS: feeling uncomfortably cold, numbness, sometimes with tingling, aching, or brief pain. Skin color changes from white or grayish yellow to reddish violet and black. TREATMENT: warm body part quickly with dry material or warm (not hot) water. Once it is warm, exercise it but do not walk on frostbitten feet. Do not rub the body part or break blisters. Get medical help!
Field Work	Bears	The best way to travel in bear country is to make as much noise as possible. Bears are most dangerous when they are startled or when they are with cubs. By making plenty of noise, the bear is given time to avoid contact with you. Bears rely on their sense of smell and hearing. Their eyesight is poor at best. This is especially important when traveling on or near streams. The noise of the stream may mask your movement and if you are downwind of the bear, it is possible to come very close without detecting each other's presence. Move out of an area in an orderly manner when a bear is spotted. Do not run! Running tends to excite a bear and can provoke an attack. Black bears must be treated with the same respect shown to brown bears. Both can be unpredictable.
	Brush	When traveling through brushy country, do not follow too close to the person ahead. Being struck in the face or eye by swinging branches is a typical and painful result. Allow at least 10 feet of distance between you and the person you are following. If you must work in brushy country where there is a high probability of being struck by a branch in the face due to the nature of the work you are doing, gloves and protective goggles are effective safety equipment for these conditions.
	Insects and Ticks	Mosquitoes, ticks, yellow jackets, and bald-faced hornets are commonly encountered while conducting field work. Most of the time, these insects and ticks are merely minor nuisances, but if populations are high—as they may be in certain areas and times of the season—certain insects may become more troublesome, and even life threatening to certain sensitive individuals, if not properly prepared for emergency treatment. Mosquitoes are generally among the most benign of the biting and stinging arthropod likely to be encountered in the forest. An insect repellent containing the compound N, N-diethyl-m-toluamide (DEET) has been a highly effective insect repellent for over 30 years against mosquitoes and many other arthropod. It is somewhat less effective against ticks when applied to exposed skin, but when used along with a repellent containing permethrin that is applied to clothing, it will provide maximum protection from ticks, as well as mosquitoes. Permethrin actually kills ticks. Crews that are bothered by mosquitoes should carry and use insect repellents containing DEET, and apply permethrin to their clothing to increase protection against ticks, as well, if they know they will be entering tick habitat (areas with an abundance of bitterbrush usually also contain and abundance of ticks). This is the treatment recommended and used by the U. S. Department of Defense for mosquitoes and ticks. A DEET-containing product, and several permethrin products are available through GSA: Insect/Arthropod Repellent Lotion (DEET) NSN 6840-01-284-3982 Insect Repellent, aerosol, 0.5% permethrin, 6-oz can NSN 6840-01-334-2666 Insect Repellent, 2-gallon sprayer formulation, 40% permethrin, 151 ml bottle NSN 6840-01-345-0237
Field Work	Insects and Ticks (con't.)	Dry cleaning will completely remove permethrin from clothing. Any treated clothing that has been dry cleaned must be retreated, if protection from arthropod is still desired. Ticks are responsible for transmission of a number of mammalian diseases including Lyme Disease (bacterium transmitted by the deer tick in eastern and midwest US; western black leg tick in Rocky Mountains and Pacific coast); Rocky Mountain Spotted Fever (bacterium transmitted by the dog tick in east and west coast; Rocky Mountain wood tick in western mountain states and Lone Star tick in southwest); Colorado Tick Fever (virus transmitted by Rocky Mountain wood tick; found in western US, usually at altitudes higher than 4,000 feet); Tick Bite Paralysis (neurotoxin released in tick's saliva by Rocky Mountain wood tick and dog tick); and Tularemia (bacterium transmitted by Lone Star tick, Rocky Mountain wood tick, Pacific Coast and American dog ticks). The Centers for Disease Control and Prevention provide the following recommendations for tick control: (1) Wear light colored, long-sleeved clothing that fits tight at wrists, ankles, and waist. (2) All clothing should overlap, including high-top boots and socks. Tuck pants into boots or top of socks. (3) Use chemical repellents: a. DEET containing liquids, aerosols or sticks can be applied to exposed skin or clothing. Avoid face area and any cuts, wounds or irritated skin. b. Permethrin (0.5% permethrin) can be sprayed on clothing. Do not wear

Douglas-fir Tussock Moth Project Final Report July 2001 Methow Valley

Appendices— Appendix J Public Information Plan

clothing until dry. **Do not spray on skin!**

- c. Citronella oil and Skin-So-Soft are non-chemical repellents that are less hazardous for children and sensitive adults.
- (4) Try to find ticks on clothing and body prior to attachment.
 - (5) Repeatedly search your body, especially around and in the hairy regions.
 - (6) Immediately remove attached ticks. Grasp the tick with tweezers, as close to the skin as possible, and pull gently. If fingers must be used, protect with tissue paper, plastic wrap, rubber gloves, etc. After removal, wipe the affected area with antiseptic and wash your hands.
 - (7) Keep the tick in a jar or vial for identification should you later develop disease symptoms. Note the date of exposure.
 - (8) Any illness within two weeks requires a trip to the doctor immediately.

Field Work

Insects and Ticks (cont.)

Most people fear venomous insects such as bees, wasps, yellow jackets, hornets and ants because of the severe pain they can inflict, and their considerable aggressiveness when the nests of these social insects are disturbed. Under the worst case scenario, a sensitized individual may rapidly develop an allergic reaction that could lead to anaphylaxis, which could be life threatening unless quickly treated. It has been stated that the frequency of insect sting allergy is probably less than 1% of the population. Of that percentage only a small number will ever develop severe anaphylactic reactions

Several reactions to insect stings are recognized: (1) local reactions; (2) large local reactions; (3) systemic reactions (anaphylactic, allergic reactions--cutaneous reactions, respiratory reactions, and cardiovascular reactions or anaphylactic shock); and (4) toxic reactions.

Treatment for Venomous Insect Stings:

For most people, treatment of an insect sting with a local anti-inflammatory, and analgesic topical solution or compound, such as use of products such as Sting Ease Swabs (by Ever Ready) is all that is needed to relieve pain and help reduce swelling and localized tissue reaction. However, for those who are known to be sensitive to venom of insects, or who develop anaphylaxis, should receive an epinephrine injection via an autoinjector as soon as possible after being stung.

- (1) Move the sting victim to an area well away from the irritated insect(s).
- (2) Flick the stinger off if any remain--speed of removal is more important than method of removal.
- (3) If the victim has laboured breathing, swelling inside the mouth or throat, or loss of consciousness, the first priority is to maintain the airway. If the primary problem is breathing difficulty, raise the victim to a head-forward position (where victim is looking straight ahead). If the primary problem is delirium or unconsciousness, the victim's head should be lower than the body (Trendelenburg position). CPR skills are needed in this situation.
- (4) If the victim is known to be allergic to stings or has airway obstruction, hives, or other signs of anaphylaxis, a subcutaneous or intramuscular injection of epinephrine should be given. We recommend the use of an autoinjector to administer epinephrine. An example is Epi-Pen, which delivers a premeasured dosage via a spring loaded, pre-cocked syringe. The most convenient location for an injection is the outside of the upper arm or the thigh. Autoinjectors will penetrate a shirt or jeans, but should not be applied through more than one layer of clothing. **Do not inject into the neck, chest, or over a vein or artery; only a physician or an emergency medical team should consider these injection sites.**
- (5) If a person is stung in an extremity, apply a loose tourniquet between the sting site and the trunk of the body.
- (6) A cold pack should be applied directly on the area(s) stung.
- (7) If victim has no history of allergic reactions to stings, an antihistamine such as Benadryl should be taken orally.

Douglas-fir Tussock Moth Project Final Report July 2001 Methow Valley

Appendices— Appendix J Public Information Plan

Field Work	Insects and Ticks (con't.)	<p>(8) Monitor the victim for 24 hours to ensure that there are no delayed reactions.</p> <p>If you are known to be allergic to insect stings, do not work in insect-infested areas during the insect season.</p> <p>Follow these precautions when working in areas where bees, wasps, yellow jackets, or hornets are prevalent:</p> <ol style="list-style-type: none">(1) Wear long-sleeved shirts with close fitting collars.(2) Keep trousers tucked in boots.(3) Avoid wearing strong scented lotions--they can attract bees.(4) Keep alert for ground and overhead nests, and avoid these areas if at all possible.(5) Stay in vehicle to eat lunch if wasps, yellow jackets and hornets are especially numerous.(6) Always carry sting kit (e.g., Sting Ease Swabs), first aid kit, and epinephrine autoinjectors when working during times and in areas where stinging insects are active. Know how to recognize onset of allergic reactions, and know how to properly use the autoinjector.
	Handtools	<p>Observe these guidelines when selecting and using a tool:</p> <ol style="list-style-type: none">(1) All handles tightly fitted, secured with a wedge, inspected for splitting, checking, warping, and absence of splinters.(2) Only sharp tools available for use.(3) Tool guards in position on the cutting edge while tool is transported to and from the job site. Guards kept by each worker to use when leaving the job site.(4) The proper tool for the job.(5) Maintain tool in good condition on the job site by keeping it touched up with a file(6) Always keep tools secure and in a safe place both on the job and in storage.(7) Never transport loose tools inside the same compartment with people, unless the vehicle is equipped with a protective screen or cargo net, or tools can be secured inside a toolbox that is fastened down.(8) When tool is not in use, place it in a predetermined location, away from persons, with the cutting edge shielded or on the ground, resting the handle against a wall, bank or stump.(9) Return worn tools to the tool room or warehouse for repairs. Separate tools needing repair from broken or worn out ones. Tag unrepairable tools that must be disposed of.(10) Never throw tools under any circumstances. <p>When carrying an unsheathed chopping tool (exempli gratia, axes, adzes, brush hooks, hatchets, machetes, and pulaskis) grasp handle close to the head with fingers and thumb around the shoulder of the handle. Place blade parallel to the leg, at arm's length and free from body. Be sure the area is cleaned of debris, and footing is secure before chopping.</p>
Field Work	Handtools (continued)	<p>Never carry chopping tool on shoulder.</p> <p><u>General Chopping Rules.</u> When chopping logs, branches, roots, or bark from trees:</p> <ol style="list-style-type: none">(1) Never allow bystanders to stand in front of or behind the chopping area.(2) Remove any branches or underbrush that might interfere with chopping.(3) Remove all overhead branches or vines that the tool might strike or hang up in.(4) Never chop cross-handed; always use a natural striking action.(5) Protect against flying chips by wearing eye protection.(6) Be especially alert when working on hillsides or uneven ground--clear your are and get a firm footing.(7) Watch out for springing if cutting a sapling that is bound down; cut from underneath if there is room. Watch for sudden breakage in brittle wood. If there is no need to remove it, leave it.(8) When standing on logs, chop only if equipped with nonskid or calked boots.(9) Never use chopping tools as wedges or mauls. Use only tools designed for striking to drive wedges or stakes.(10) Do not allow two people to chop together on the same tree.(11) When grubbing with a pulaski, pull out roots rather than cut them.(12) When chopping limbs from a felled tree, always stand on the opposite side of the log from the limb being chopped, swinging toward the top of the tree or branch and keeping the striking angle of the ax head almost perpendicular to prevent glancing.(13) Use special tool and shin protection if needed on chopping jobs.

Douglas-fir Tussock Moth Project Final Report July 2001 Methow Valley
Appendices— Appendix J Public Information Plan

**Vehicle
Travel**
(Operating a
vehicle on
highways and
other paved
road
surfaces, on
unpaved
back-country
road
surfaces, and
under
adverse
conditions).

Shifting
loads

Driving
Fatigue

Bow Saws

When inserting a blade in a bow saw frame, keep hands and fingers in the clear when the tension lever snaps into or against the saw frame.

When removing a bow saw blade from the frame, see that the blade guard is in place.

Carry bow saw over the shoulder with guarded blade to the rear.

Don't push or force the saw. Begin with light gentle strokes until the teeth begin forming a kerf.

General vehicle operation and travel hazards are covered in detail in Chapter 2 of the Health and Safety Code Handbook, (FSH 6709.11). The vehicle operator is responsible for familiarizing with material contained in this chapter before operating a government vehicle. In addition, the vehicle operator must possess a valid state driver's license and a Government Vehicle Operator's Identification Card (form WW-6730-1), and carry both on person while operating any government owned or leased vehicles. Several of the vehicle operation and driving hazards contained in the listed references are emphasized in the following.

Secure all cargo, gear, and loose objects in bed of truck, or behind cargo net in area separated from the passenger area. Never keep loose items on the dashboard or over the sunvisor.

Warnings

A number of warning signs appear when a vehicle operator experiences fatigue:

- (1) Vehicle feels too warm.
- (2) Muscular tension.
- (3) Eye strain.
- (4) Restlessness (rubbing face, neck, or arms, and inability to get comfortable).
- (5) Inattention, daydreaming.
- (6) Impatience or irritability not normally experienced.
- (7) Hallucinations, that is, misinterpreting shadows, reflections, objects on or near road, resulting in impulse to strongly control vehicle.
- (8) Drowsiness, especially after meals.
- (9) Feeling that it is "ok" to close eyes for just a second.

Abatement Actions:

Don't wait for these signals to overpower you. Pull over and rest, or change to a fresh, rested driver if more than one authorized driver are in the vehicle. NEVER push yourself to go the last several miles since "you're almost there anyway;" an accident isn't worth that risk!

Under normal, non-emergency conditions, employees operating government vehicles shall not drive:

- (1) Unless they have had at least eight (8) consecutive hours off duty before beginning a shift.
- (2) More than two (2) hours without a rest stop. Drivers carrying 15 or more passengers shall stop for 10 minutes every hour.
- (3) More than 10 hours per shift.
- (4) After more than 16 hours from beginning of shift, including rest stops and meal stops.

Douglas-fir Tussock Moth Project Final Report July 2001 Methow Valley

Appendices— Appendix J Public Information Plan

Vehi cle Trav el	Driving to and from the work site (continued)	<p>Loose gravel on road surface can cause loss of traction on grades and curves, and may triple usual stopping distance. Slow down before curves. Watch for flying rocks from other traffic and stay on your side of the traveled portion of the road.</p> <p>Maintain vehicle control, and don't fight ruts, chuckholes, puddles and washboard roads, just drive slowly and calmly. Take the best route. Don't drive with your thumb wrapped on the steering wheel. Hitting large rocks, obstacles or chuckholes may cause the steering wheel to kick back and injure your thumbs.</p> <p>Approach log landings with caution. Low guy lines, mainline and haulbacks are hard to see. Approach any line or cable with caution. Keep clear if there is any movement.</p> <p>If rocks, boulders, and windfalls are on the road, stop if there is room and remove them from the road. Make sure of adequate clearance before driving over or around them.</p> <p>Any adverse weather conditions, such as rain, snow, smoke, or fog affects your ability to see other vehicles and road hazards. The other drivers have similar problems and extra caution is necessary. Slow down and use your headlights. Snow requires proper tires and/or chains and does not always appear slick. Increase following interval to four seconds.</p> <p>On blacktopped logging roads watch for vehicles travelling at a high speed. Usually shoulders are narrow or absent. Frost is more of a hazard on blacktop than on gravel, and crossing over paved overpasses or bridges are especially hazardous. Slow down and maintain control, and drive with greater caution.</p>
	Approaching Traffic Passing	<p>Keep as far to the right as possible and signal your turns as necessary. Anticipate close following traffic and emergency stops.</p> <p>Signal your intention and allow enough clearance. Be sure of adequate passing distance and visibility. Avoid awkward or high-speed pass. Be courteous.</p>
	Traversing Steep Grades Backing	<p>Check brakes, use low gear and alternately apply and release your brakes while descending. Watch for overheating and brake fade on long descents. Stop if necessary for cooling. Use low-range 4WD on steep descending jeep roads or other unmaintained primitive roads.</p> <p>If possible, avoid backing up by positioning the vehicle for a forward departure. If backing is necessary, it is generally safer to back at the time of arrival than at the time of departure.</p> <p>Check for clearance and blind spots before backing. If any problems, get out and look over the situation or have your passenger get out and help guide you. If you use a guide, make sure only the designated person gives signals.</p> <p>Sound horn and back up slowly.</p>
	Vehi cle Trav el	Backing (continued)
Parking		<p>Park off the traveled roadway whenever possible to keep from impeding flow of traffic. Leave plenty of clearance on logging roads, at landings, and truck turns.</p> <p>Make sure you are on stable ground and avoid soft shoulders.</p> <p>Leave your vehicle in low or reverse if manual, or park if automatic transmission, and engage parking brake.</p> <p>Use chock blocks on steep grades.</p> <p>Even when stopping for a short time on the roadway, watch for oncoming traffic.</p> <p>Lock up vehicle if it will be unattended for a time.</p> <p>If possible, turn around only on surfaced turnouts.</p>

Douglas-fir Tussock Moth Project Final Report July 2001 Methow Valley

Appendices— Appendix J Public Information Plan

Vehicle Travel	Turning Around	<p>Make sure you have complete clearance before turning around.</p> <p>If it's necessary to turn around on a soft spot, keep the driving wheels on solid ground. Get out and check ground condition when in doubt.</p> <p>Turn vehicle around before leaving vehicle. If you're stuck then you'll have more time to work on the problem.</p> <p>Always "face the danger" when backing up to turn around. Back rear of the vehicle toward the cutbank.</p>
	Driving to and from the work site (Backcountry driving)	<p>Avoid putting the front wheels too far out on the fill slope edge of the road. Use a passenger to help guide you. Drive defensively.</p> <p>Always drive at a safe speed for the weather and road conditions.</p> <p>Be a courteous driver: sound your horn and drive slowly around blind corners on winding mountain roads, staying well on the right side portion of the road surface, and be able to stop the vehicle within less than half of the visible distance.</p> <p>Have passenger talk with the driver to help keep him/her awake and alert during long trips.</p> <p>When approaching a vehicle coming from the opposite direction on a narrow or one lane road, pull over and stop in a turnout to let them safely pass.</p> <p>Trade off with other drivers often to avoid fatigue.</p> <p>Do a safety check on the vehicle before driving it each day.</p> <p>Always drive with your headlights on.</p> <p>Always wear a seatbelt, even if the vehicle is only going a short distance.</p> <p>Before starting downgrade, shift into a lower gear. If you are riding your brakes, you are in too high a gear. Use one gear lower to descend a grade than would be used to ascend it. Release and apply brakes often to avoid burning brake lining.</p> <p>Use 4-wheel drive judiciously: use it to get you <u>out</u> of a situation; <u>not into</u> trouble. Use when steep grades and road surfaces warrant it.</p> <p>Fresh berm on road surface means a grader may be on the roadway ahead. Head on traffic is likely, and it is difficult to cross over high or rocky berms so vehicle operator must slow down and drive with extra caution. Stay on your side of the road unless there is not enough room. If you must cross over the berm watch for large rocks that can damage the oil pan, transfer case, transmission housing, drive-line, fuel tank, etc. Also, be extra alert for on-coming traffic.</p> <p>Don't follow closely behind other vehicles. Their dust cloud can obscure your visibility, especially to see oncoming traffic and other road hazards.</p>
Vehicle Travel	Scouting and "Windshield" Surveys Map Reading	<p>When scouting or surveying the countryside from the vehicle, use a passenger as an observer.</p> <p>If no observer is available, stop periodically to observe and make notes after pulling off the traveled roadway.</p> <p>Use a passenger to read maps and help navigate. If a navigator is unavailable and it is necessary to refer to a map or instructions, pull off the travelled portion of the road and stop. Never try reading a map while you are operating the vehicle!</p>

Douglas-fir Tussock Moth Project Final Report July 2001 Methow Valley
Appendices— Appendix J Public Information Plan

Medical Plan

**TUSSOCK MOTH
Methow Valley ICP
Medical Evacuation Plan**

Operational Period

May 7, 2001

To

September 30, 2001

Douglas-fir Tussock Moth Project Final Report July 2001 Methow Valley
Appendices— Appendix J Public Information Plan

Prepared By, (Safety Officer)

Reviewed By, (Incident Commander)

__//S//__ D. Wayne Wilson

Revised 4/26/01

Introduction:

This plan attempts to provide information and recommend actions in the event of an emergency or non-emergency situation in support of an evacuation via ground or air transport.

Purpose & Need:

The purpose of this plan is to expedite and assist emergency actions by the individual(s) on scene, determine status, effect rescue and facilitate medical treatment. To assist with security measures to ensure a safe and proper evacuation of any injured party(s).

Incident Information Required:

Type of accident -
Physical location -
Needs for more assistance? Number of patients involved?-
Quick evaluation of patient condition -
If transported by helicopter weather conditions at site-
If transported by ground closest road or junction-
Estimated time to transport patient to road or helispot-

Medical Emergency Procedures

Off Scene Responsibilities:

- ⇒ Notify ICP, Okanogan Valley Dispatch and local district administrator of the incident.
- ⇒ Administer local "Search & Rescue Plan" if needed.
- ⇒ Remember to document location of accident, Date and time notified, name of individual relaying information, and name & phone number of each person contacted when coordinating a medical evacuation.
- ⇒ Arrange for security and investigation at the mishap site if needed or requested. Call Agency or local Law Enforcement to assist if needed.
- ⇒ Notify area hospital of the situation and extent of injuries.

On Scene Responsibilities:

- ⇒ Notify your Supervisor, ICP Dispatch, Okanogan Valley Dispatch or Local Duty Officer of any accidents, or medical situations that require assistance.
- ⇒ Provide first aid to individuals and transport them the most effective way to medical assistance "**safely**", if the injuries are not life threatening.
- ⇒ Ensure personnel involved; do not broadcast names of individuals or state the extent of injuries other than to qualified medical personnel over the radio.
- ⇒ Prepare a helispot landing for medical helicopter(s) if needed.
- ⇒ Assist medical personnel on scene if requested.

* Information regarding an individual's death is not to be talked about over the radio or released to the general public until "agency officials" have authorized it.

To Place a Medivac Helicopter on standby or alert call...

[]	Incident Command Post	1-509-996-2816
[]		1-509-996-2832
[]	Incident Dispatch	1-509-996-2814
[]	Incident Operations	1-509-996-2809
[]	Methow Valley R. D.	1-509-997-2131
[]	Okanogan Valley Office	1-509-826-3275
[]	Med Star	1-800-422-2440
[]	Airlift Northwest	1-800-426-2430
[]	Supervisor Office	1-509-662-4335
[]	General Emergency	- 911-

* * (Note: Med Star dose not charge for standby or when placed on alert)

Radio Frequencies:	<u>Rx Freq.</u>	<u>Tx Freq.</u>
Methow Valley Ranger District	169.875/146.2	169.875
Okanogan Valley Office	170.475/146.2	170.475
Air to Ground –	167.200	167.200

Med Star & Helicopter Flight Times TO:

Twisp WA	51 Min. (Moses Lake ship)
Omak WA	49 Min. (Moses Lake ship)
Brewster WA	45 Min. (Moses Lake ship)

Ground Transportation Times:

Twisp to Brewster	50 Min.
Twisp to Omak	55 Min.
Twisp to Wenatchee	1 Hr. 30 Min.

Alternate Air Resources for Medivac

Airlift Northwest	Seattle 1-800-426-2430
US Army	Yakima 1-509-577-3479

Law Enforcement contacts:

	<u>LOCATION</u>	<u>PHONE</u>
Okanogan County Sheriff	Okanogan WA	800-572-6604 509422-7232
Chelan County Sheriff	Wenatchee WA	509 664-5243
Washington State Patrol	Okanogan WA	509 422-3800

USFS-LEO

ROGER FUSION

**Okanogan/Wenatchee-SO Special Agent
509-662-4236**

David Graves

**Methow Valley Ranger District
509-996-4037**

J. Appendix – Public Information Plan

METHOW VALLEY RANGER DISTRICT

Okanogan and Wenatchee National Forests

PUBLIC INFORMATION PLAN

Douglas Fir Tussock Moth Suppression Project - 2001

3/12/01 – J. Newcom, P. Hart, J.Zbyszewski, D.Phillips, J. Archambeault

3/20/01 – Input from Project Team at Winthrop

5/11/01 Final – Archambeault

Situation:

Field sampling shows Douglas-fir tussock moth numbers at sub-outbreak or outbreak levels within the Methow Valley Ranger District. About 27,000 forested acres may have a high enough population of insects and meet regional criteria for an aerial spray project to suppress the outbreak. Of highest concern are National Forest lands in the Early Winters, Eight Mile Creek, and Wolf Creek areas. Unless virus tests and field sampling show the outbreak is collapsing naturally, a spray project will occur between the second week in June and mid-July. Spraying will be with the TM-BioControl-1 virus, mixed with a carrier. Most local citizens have been supportive of a spray project, though there has been some concern about the proposal to spray several thousand acres within the Chelan-Sawtooth Wilderness. Several local residents have asked that the TM bio-control agent be made available for spraying tussock moth infestations on adjacent private lands. Private landowners interested in spraying on their own property are being directed to the Washington Department of Natural Resources (DNR).

Objectives:

- Inform and educate the public regarding the analysis process used, information considered, and Forest Service rationale for suppressing insect populations in selected areas.
- Provide basic information on tussock moth biology and ecology (life cycle, etc.).
- Gain and preserve public support for the project.
- Facilitate feedback from an informed public, and use that feedback to fine-tune the areas where suppression will occur, within the framework of the Final Environmental Impact Statement (FEIS) and Record of Decision (ROD).
- Keep recreationists and local residents posted on a daily basis during the spray project.

Audience:

- Adjacent private land owners, Colville and Yakima Tribal Governments, environmental organizations that have expressed interest in management of the National Forest; the general public with emphasis on Mazama; Winthrop; Twisp; Upper Methow Valley residents; travelers on the North Cascades Scenic Highway; recreation visitors; County Commissioners and other local elected officials; federal elected officials (Hastings/Davis; Gorton/Caswell; Murray); Okanogan Conservation Coalition: cattle permittees; Methow Valley Sports Trails Assn.; Methow Conservancy; Other Agencies (County Extension; Washington Department of Fish & Wildlife, NRCS, NPS, DNR, FWS, NMFS...); City governments for Twisp/Winthrop; Forest Service Employees; Edelweiss Home Owners Association; Lost River Airport Home Owners Association.

Actions:

What	Who	When
Cascade Lookout Story	IIO	by 3/26
Web page -Link to OKA and/or WEN page	IIO and I&DC	by 5/1, then Daily
Media (also included in "Fax Tree") -News Releases -KVLR, KOZI, KOMW -MVNews, Omak Chronicle, Wenatchee World, Spokesman Review, Spokane TV, Key Seattle Media.	IIO	Mid-April, June 1, when spraying begins, then as needed
Accident Plan -Spills -a/c accident/incident -Accidental spray on pvt. land	Safety Off./OPS/IIO	by 5/15
Posters/Printed Info. -For All CGs and THs -For affected CG and TH -Hand out info. sheet for campgrounds and front desk/VICs -mail to folks who've attended public meetings to date	IIO	by 5/15
Orientations/Information Packets -All field going employees - one time -Rec guards, CG hosts, Frontliners, VIC staff - as needed -With LARGE packet of background information, for reference -Talking points sheet	Monitor/OPS/Rec Staff/IIO	5/15- 6/1
Large 'Easel style' Display -With Laptop PowerPoint presentation, if possible -Washington Pass? -For Winthrop VIC, Sun Mtn., Freestone, Others?	IIO	by 6/1
Updates via e-mail, hard copies and FAX -To Visitor information Centers (VICs), CG hosts, Methow Recreation folks -Frontliners (Methow, Chelan, Wenatchee, Tonasket, NCNP) -Methow RD employees, as needed -Fax "tree" -Local Call-in number with updates -Include private land spraying, if known	IIO	Daily
Film Liaison	IIO?	
Personal Contacts Local Environmental groups-Peter Goldman, George Wooten Aileen Jefferies, Amy Marshall, Bruce Morrison, Lincoln Post, Susan Crampton, Ed/Vicky Welch. Upper Methow Residents- John Hogness, John Hayes, Bob Spiwak, Dalton DuLac, Darrell Gantt, Nancy Farr, Red McComb, Harold Heath, George Wooten	IIO/DR/IC/OPS	As needed

Douglas-fir Tussock Moth Project Final Report July 2001 Methow Valley
 Appendices— Appendix J Public Information Plan

What	Who	When
District Meeting -Methow Employees	IIO/DR	As needed
Medical Info. -Local physicians -Ambulance Service -MSDS Sheets - in handout to employees -Labeling Info. - in handout to employees	Med Unit/Safety Off./Monitor Ldr./IIO	As needed
Group Contacts -Chambers and Town Councils Twisp and Winthrop -Congressional State/Federal -Landowners -Outfitters, other recreation providers, (possible letter/brochure?) -Cattle Permittees (possible letter/brochure?) -OC3 -Lost River Homeowners (possible letter/brochure?) -Edelweiss Homeowners (possible letter/brochure?) -Businesses: Freestone Inn, Sun Mtn., Browns Farm, Mazama Country Inn, Mazama Store, etc. -Agencies: NMFS, FWS, WADFW, DNR, NPS, NRCS, WSDOT, County -Methow Conservancy, Methow Valley Citizens' Council. -Include in "fax Tree"	IIO	As needed
Political Contacts -Federal and State Legislators, Okanogan County Commissioners (Dave Schultz)	IC/IIO	As Needed
Campground/TH Closures -36 hours???? ahead of time, when possible -Identify alternate camping locations -KOA -Rocking Horse Ranch -Dispersed sites -No spray- weekends and/or Holidays???? -CGs identified as separate, smaller, spray blocks?? -Sandwich Boards at CG entrances -Include Wolf Creek TH here	Monitor Staff/OPS/Rec Staff/IIO	As Needed
List of available PIOs	IIO/HART	April 15
Monitoring Sheets -Rec. experience -Health	Monitor/Rec Staff/IIO	As needed

Jim Archambeault will be lead information officer for the project. He will be supported by a team of incident information specialists from on-forest and from elsewhere in the region. A few seasonal employees will be assigned to do public contacts in campgrounds and at trailheads during the project.

Okanogan and Wenatchee National Forests



215 Melody Lane
Wenatchee, WA 98801

Public Affairs Office:
(509) 662-4314; Fax (509) 664-2731

Visit our websites at www.fs.fed.us/r6/wenatchee
www.fs.fed.us/r6/okanogan

NEWS RELEASE

Date: July 12, 2001

Subject: Successful Douglas Fir Tussock Moth Suppression Project Wraps Up

Contact: Don Nightengale, Entomology Coordinator, at 509-997-2131

The Douglas Fir Tussock Moth Suppression Project in the Methow Valley is coming to a close. Project officials are beginning to send workers home after completing a project to reduce populations of the tussock moth in the Methow Valley. The last day that acreage was sprayed was Monday July 9.

To sum up the success of this project, Incident Command Leader, Wayne Kleckner says “the project has been a success in the fact that we have already seen dramatic reductions in tussock moth populations, plus the predicted defoliation of the fir trees has been only slightly noticed.” Entomology crews will continue to complete evaluation plots for treatment effectiveness until August 1.

The initial results of the spray project using TM-BioControl-1, a virus specific to the tussock moth, has been very positive. The project entomology crew is finding that the tussock moth populations are considerably reduced in areas that have been treated. Connie Mehmel, program entomologist states that crews are “just beginning to gather tussock moth population data in the sprayed areas. Spraying of nuclear polyhedrosis virus, a virus specific only to the tussock moth has significantly reduced tussock moth populations. In spray blocks that had high caterpillar numbers, the population has decreased by 92% to 98%. Defoliation in the sprayed blocks has been less than 10%.”

We had projected that 30,361 acres in three major areas would need to be treated. Those areas included Eightmile Creek, Wolf Creek and Mazama. Of those 30,631 acres, only 16,689 acres were

sprayed. This was due to low population findings in many of the blocks, mainly in the Eightmile area, because the outbreak did not progress beyond numbers found in the Fall 2000 population surveys. A portion of these areas were set aside for control areas.

Entomology crews will continue gathering data to determine the final outcome of the project. Fall surveys will reveal the effectiveness of the Suppression Program. From these finding, Forest Service officials will determine the need for any future suppression programs in the Methow Valley.

The community was over-all receptive to the Tussock Moth Suppression Project in the Methow Valley. According to Information Specialist Megan Perkins, “ project team members went all out to distribute information to all home owners and businesses in areas that were to be sprayed. Officials were readily available to answer questions of the public and measures were taken to inform the public on a daily basis of the project spray plan.”

Tussock Moth Suppression Project officials and Methow Valley Ranger District would like to extend their appreciation to the local community. “We appreciate the great deal of support and patience displayed by the citizens and businesses within the communities we have impacted,” says Wayne Kleckner.

Any further questions regarding the Tussock Moth Suppression Project can be directed to Don Nightengale, Winthrop Work Center, 509-997-2131.

END

(i) **TM-BioControl Product Label**

IF ON SKIN: Wash with plenty of soap and water

TM-BIOCONTROL

For Douglas-fir Tussock Moth

**Biological Insecticide
Wettable Powder**

PRECAUTIONARY STATEMENTS

Hazards to Humans and Domestic Animals

WARNING: Causes substantial but temporary eye irritation. Do not get in eyes, on skin or clothing. Wash thoroughly with soap and water after handling. Prolonged or frequently repeated skin contact may cause allergic reactions in some individuals.

Personal Protective Equipment (PPE)

Applicators and other handlers must wear:

- Long-sleeved shirt and long pants
- Shoes and socks
- Protective gloves
- Mixers must also use additional protective eyewear (e.g., goggles or face shield).

User Safety Recommendations

Users should wash hands before eating or drinking. If pesticide gets inside clothing, wash skin thoroughly before putting on clean clothes. Remove PPE immediately after handling this product. Bathe and change clothing soon after product application.

Environmental Hazards

For terrestrial uses, avoid direct application to lakes, streams, or ponds. Do not contaminate water when cleaning equipment or disposing of equipment washers.

ACTIVE INGREDIENT: *
Polyhedral inclusion bodies of
Douglas-fir Tussock moth nuclear
Polyhedrosis virus.....11.6%W/W

INERT INGREDIENTS
Insect parts/inert solids.....88.4% W/W
Total.....100.00% W/W

* Contains at least 621.7 billion inclusion bodies per ounce

**KEEP OUT OF REACH OF
CHILDREN**

**WARNING
AVISO**

Read First Aid Treatment Before Use

Notice

The USDA Forest Service makes no warranty, express or implied, of merchantability and/or fitness concerning this material, except those contained on the label.

Si usted no entiende la etiqueta, busque a alguien para que se la explique a usted en detalle. (If you do not understand the label, find someone to explain to you in detail).

MFG. For: USDA Forest Service
180 Canfield Street
Morgantown, VA 26505

EPA Registration No: 27586-1
EPA Establishment No: 58971-MD-001

Net Weight _____ Lot No: _____

Directions For Use

It is a violation of Federal law to use this product in a manner inconsistent with its labeling.

Only for formulation into a biological insecticide for use in managing Douglas-fir tussock moth infestations in wide-area public pest control programs sponsored by government entities. This product is registered only for the management of this moth and its use to forest trees and ornamental or noncommercial trees in urban parks, golf courses, lawns and landscapes. Tree species include but are not limited to Douglas-fir, blue spruce, and Englemann spruce. Registration of this product does not allow use on ornamental trees for sale, or commercial seed production.

FIRST AID TREATMENT

IF IN EYES: Hold eyelids open and flush with a steady, gentle stream of water for 15 minutes. Get medical attention if irritation persists.

Douglas-fir Tussock Moth Project Final Report July 2001 Methow Valley

Appendices— Appendix J Public Information Plan

TM-BioControl contains a virus efficacious for larvae of the Douglas-fir tussock moth with maximum effectiveness exhibited against early instar larvae. Spray application should occur soon after egg hatch when first and second instar larvae are actively feeding on new needles. Best results are expected when applications are made early in the morning on dry foliage. Application is not recommended if rain is predicted within 12 hours.

Ground Application

Spray formulation using hydraulic equipment should be applied in sufficient volume for thorough coverage. It is recommended that the formulated field sprays, 0.40 ounces per acre of product be applied at a rate of 100 gallons per acre to woodlots and small acreages. Individual trees should be sprayed once to runoff (e.g., 15 to 20 gallons for large Douglas-fir trees).

Tank mix sequence (per 100 gallons):

- Fill tank with 98 gallons of water and start agitation.
Never use chlorinated water in the spray formulation.
- When necessary, adjust pH with products available for swimming pools to pH 6.0 to 7.2.
- Add 2 gallons of Bond® (Loveland, Inc.)
- Prepare 0.4 ounces (11 grams) of TM-Biocontrol water slurry and add to tank-mix.
- Continue agitation for 15 minutes and check pH before spraying.

Mixing equipment should have in-line filter and allow continuous circulation during agitation. Adjuvants may enhance performance of this product. Carrier mixture can be prepared within 24 hours of use and TM-BioControl added just before application. Although not recommended, it is possible to apply unused formulated field spray up to 48 hours after preparation if pH has not exceeded 7.2

Aerial Application

For foliage protection, apply 0.4 ounces of TM-BioControl per acre. **Adjust mixture proportions in field spray to accommodate different delivery rates of ½ to two gallons per acre** Preparation sequence for each of the aerial tank mixtures should follow the same general precautions as those outlined for ground application. Circulate tank-mix for 15 minutes before loading aircraft. Use boom and nozzle systems or rotary atomizers designed to result in droplet Volume Median Diameters (VMD) of 50 to 300 microns. **DO NOT ADD TM-BIOCONTROL DIRECTLY TO AIRCRAFT HOPPER.**

dry place. Temperatures below freezing are recommended for long-term storage.

Pesticide Disposal: Wastes resulting from the use of this product may be disposed on site or at an approved waste disposal facility.

Container Disposal: Completely empty bag into application equipment. Then dispose of empty bag in a sanitary landfill or by incineration or, if allowed by State and local authorities, burning. If burned, stay out of smoke.

STORAGE AND DISPOSAL

Do not contaminate water, food or feed by storage and disposal.

Storage: Direct sunlight or temperatures above 80° F will impair activity. Store in sealed containers in cool

TM-BioControl Product Label

TM-BIOCONTROL

For Douglas-fir Tussock Moth

Biological Insecticide Wettable Powder

ACTIVE INGREDIENT: *

Polyhedral inclusion bodies of
Douglas-fir Tussock moth nuclear
Polyhedrosis virus.....11.6%W/W

INERT INGREDIENTS

Insect parts/inert solids.....88.4% W/W

Total.....100.00% W/W

* Contains at least 621.7 billion inclusion bodies per ounce

KEEP OUT OF REACH OF CHILDREN

WARNING AVISO

Read First Aid Treatment Before Use

Si usted no entiende la etiqueta, busque a alguien para que se la explique a usted en detalle. (If you do not understand the label, find someone to explain to you in detail).

MFG. For: USDA Forest Service
180 Canfield Street
Morgantown, VA 26505

EPA Registration No: 27586-1

EPA Establishment No: 58971-MD-001

Net Weight _____ Lot No: _____

FIRST AID TREATMENT

IF IN EYES: Hold eyelids open and flush with a steady, gentle stream of water for 15 minutes. Get medical attention if irritation persists.

IF ON SKIN: Wash with plenty of soap and water

PRECAUTIONARY STATEMENTS

Hazards to Humans and Domestic Animals

WARNING: Causes substantial but temporary eye irritation. Do not get in eyes, on skin or clothing. Wash thoroughly with soap and water after handling. Prolonged or frequently repeated skin contact may cause allergic reactions in some individuals.

Personal Protective Equipment (PPE)

Applicators and other handlers must wear:

- Long-sleeved shirt and long pants
- Shoes and socks
- Protective gloves
- Mixers must also use additional protective eyewear (e.g., goggles or face shield).

User Safety Recommendations

Users should wash hands before eating or drinking. If pesticide gets inside clothing, wash skin thoroughly before putting on clean clothes. Remove PPE immediately after handling this product. Bathe and change clothing soon after product application.

Environmental Hazards

For terrestrial uses, avoid direct application to lakes, streams, or ponds. Do not contaminate water when cleaning equipment or disposing of equipment washers.

Notice

The USDA Forest Service makes no warranty, express or implied, of merchantability and/or fitness concerning this material, except those contained on the label.

Directions For Use

It is a violation of Federal law to use this product in a manner inconsistent with its labeling.

Only for formulation into a biological insecticide for use in managing Douglas-fir tussock moth infestations in wide-area public pest control programs sponsored by government entities. This product is registered only for the management of this moth and its use to forest trees and ornamental or noncommercial trees in urban parks, golf courses, lawns and landscapes. Tree species include but are not limited to Douglas-fir, blue spruce, and Englemann spruce. Registration of this product does not allow use on ornamental trees for sale, or commercial seed production.

TM-BioControl contains a virus efficacious for larvae of the Douglas-fir tussock moth with maximum effectiveness

exhibited against early instar larvae. Spray application should occur soon after egg hatch when first and second instar larvae are actively feeding on new needles. Best results are expected when applications are made early in the morning on dry foliage. Application is not recommended if rain is predicted within 12 hours.

Ground Application

Spray formulation using hydraulic equipment should be applied in sufficient volume for thorough coverage. It is recommended that the formulated field sprays, 0.40 ounces per acre of product be applied at a rate of 100 gallons per acre to woodlots and small acreages. Individual trees should be sprayed once to runoff (e.g., 15 to 20 gallons for large Douglas-fir trees).

Tank mix sequence (per 100 gallons):

- Fill tank with 98 gallons of water and start agitation.
Never use chlorinated water in the spray formulation.
- When necessary, adjust pH with products available for swimming pools to pH 6.0 to 7.2.
- Add 2 gallons of Bond® (Loveland, Inc.)
- Prepare 0.4 ounces (11 grams) of TM-Biocontrol water slurry and add to tank-mix.
- Continue agitation for 15 minutes and check pH before spraying.

Mixing equipment should have in-line filter and allow continuous circulation during agitation. Adjuvants may enhance performance of this product. Carrier mixture can be prepared within 24 hours of use and TM-BioControl added just before application. Although not recommended, it is possible to apply unused formulated field spray up to 48 hours after preparation if pH has not exceeded 7.2

Aerial Application

For foliage protection, apply 0.4 ounces of TM-BioControl per acre. **Adjust mixture proportions in field spray to accommodate different delivery rates of ½ to two gallons per acre** Preparation sequence for each of the aerial tank mixtures should follow the same general precautions as those outlined for ground application. Circulate tank-mix for 15 minutes before loading aircraft. Use boom and nozzle systems or rotary atomizers designed to result in droplet Volume Median Diameters (VMD) of 50 to 300 microns. **DO NOT ADD TM-BIOCONTROL DIRECTLY TO AIRCRAFT HOPPER.**

Pesticide Disposal: Wastes resulting from the use of this product may be disposed on site or at an approved waste disposal facility.

Container Disposal: Completely empty bag into application equipment. Then dispose of empty bag in a sanitary landfill or by incineration or, if allowed by State and local authorities, burning. If burned, stay out of smoke.

STORAGE AND DISPOSAL

Do not contaminate water, food or feed by storage and disposal.

Storage: Direct sunlight or temperatures above 80° F will impair activity. Store in sealed containers in cool dry place. Temperatures below freezing are recommended for long-term storage.



USDA Forest Service
OKANOGAN - WENATCHEE NATIONAL FORESTS
Methow Valley Ranger District

DOUGLAS-FIR TUSSOCK MOTH PROJECT - 2001

An outbreak of Douglas-fir tussock moth is threatening forest resources on portions of the Methow Valley Ranger District. A decision was made by the Regional Forester in spring 2000 to protect specific areas of concern where surveys determine that heavy defoliation by tussock moth will likely cause unacceptable impacts. This leaflet provides information about the project.

Douglas-fir Tussock Moth - Tussock moths damage trees by eating their needles and are a major defoliator of fir forests in western North America. Douglas-fir and true firs are the tussock moths preferred food source; however, the insect will feed on other tree species when it has eaten all the fir needles available. The caterpillar, or larval stage of the insect, does all the feeding; the moths do not feed. Larvae reach a length of about 1.25 inches, are very colorful and have tufts of long hairs.

The tussock moth is a native inhabitant of fir forests in Eastern Oregon and Washington. Tussock moth populations are cyclic, with an increase in population every 7 to 13 years. Each outbreak lasts 2 to 4 years and ends with a sudden crash. The outbreaks usually occur in mature and over-mature multi-story stands with a high density of host trees; trees on ridge tops and south facing slopes are the most vulnerable. A very large number of larvae can completely strip trees of all their foliage within a few weeks. Trees without their needles are more susceptible to attack by other insect pests, particularly bark beetles, and increase the risk and severity of fires.

Because of an outbreak in the early 1970s, the United States Department of Agriculture initiated a program to research the moth. The objective was to better anticipate future outbreaks and to develop management options. One result of this program was a survey technique, the "Douglas-fir Tussock Moth Early Warning System", which monitors population trends. According to data from this "early warning" monitoring, tussock moth populations have been increasing. The anticipated outbreak is expected to occur primarily in the years 2000-2002 and could last through 2004 in the Pacific Northwest.

In many places, the tussock moth can act as a natural disturbance agent by reducing overstocking and creating stand openings. However, defoliation in some areas would cause unacceptable harm to fish and wildlife habitat (including species federally listed as threatened or endangered) or to areas where people live, recreate and work.

The Final Environmental Impact Statement for the tussock moth project analyzed short-term management strategies that would maintain existing vegetative conditions in specific areas and would protect specific resources until long-term management actions restore a more balanced forest condition over the landscape. It is not the intent of this project to stop or prevent the overall tussock moth outbreak, or to prevent defoliation over the entire area where the outbreak may occur.

Insecticide - Aerial application of TM-BioControl-1 will be used to protect specific areas of concern from defoliation. TM-BioControl-1 is an insecticide made from a natural virus of the tussock moth. This virus is the primary cause of the collapse of Douglas-fir tussock moth outbreaks under natural conditions. This virus is specific only to Douglas-fir tussock moth and two other species of tussock moth in the western US.

Exposure to the Douglas-fir tussock moth larvae can cause effects on humans. About one third of the people who come in contact with the hairs of tussock moth larvae have an allergic reaction of skin, eye, and respiratory tract irritation. People who are sensitive or allergic to other insects tend to be more sensitive to the tussock moth larvae. These effects are not life threatening or debilitating and are reversible. Exposure to TM-BioControl-1 may also cause some of the same symptoms, but at much lower risk. First aid treatment includes flushing with a stream of water or washing thoroughly with soap and water.

Douglas-fir Tussock Moth Project Final Report July 2001 Methow Valley
Appendices—Appendix J Public Information Plan

Treatment Criteria - Application of TM-BioControl-1 will occur only after sampling has confirmed the presence of treatable populations of tussock moth larvae and that they are in a stage of development most vulnerable to treatment. TM-BioControl-1 will be applied by helicopter. Generally, spray operations will occur between 5 a.m. and 7 a.m. each day, but may last longer if weather conditions permit. Weather conditions include wind between 1 and 8 MPH, relative humidity more than 50 percent and a temperature between 34 and 70 degrees.

Project location - The project area includes about 30,000 acres on the Methow Valley Ranger District, including areas near Mazama, along the North Cascades Scenic Highway (State Route 20), the Eightmile/Chewuch drainage, and a small area in the Wolf Creek drainage outside of the Lake Chelan-Sawtooth Wilderness. Actual acres sprayed for the Tussock Moth could be less than the amount above.

The area to be treated has been divided into about 175 individual spray blocks. Treatment for each block depends on weather conditions, elevation and tussock moth larval development and will be determined about 2 days before spraying. Notices will be posted at campgrounds and along roads and public contact will be made daily within the treatment area. All treatment will be on National Forest System lands.

Staffing - Approximately 60 people will be working at Winthrop WA, throughout the project. Some entomology crews will begin working May 7th, surveying the tussock moth population. These crews will continue working through the entire project monitoring population levels. Additional people will be assigned to the project when application begins, some only for a few days. Forest Service employees, local temporary hires, and contractor personnel will work together to complete the project.

Contractor - TM-Biocontrol-1 will be applied with a helicopter by a private contractor under the supervision of the Forest Service. Heli-Jet Corporation headquartered in Eugene, Oregon has been awarded the contract. They have conducted similar projects throughout the United States. They will operate from a helibase near Winthrop, and from other temporary spots in the project area.

Project Schedule - Application of TM-BioControl-1 will begin in mid June and end in early July. An approximate schedule of key events is listed below. This schedule is subject to change due to weather and larval development.

- May 7 - Crews begin monitoring insect population levels.
- mid June - First spray blocks released and application begins.
- mid July - Tentative completion of application.
- mid to late July - Crews monitor effectiveness of treatment.
- mid August - Tentative end of project.

Other Activities – At the same time the Forest Service is conducting this project, private landowners in the upper Methow may be spraying the same insecticide on their lands. Those landowners are working with the Washington State Department of Natural Resources to spray about 1600 acres. Although they will be operating at about the same time, and may use the same applicator, this effort is completely separate from the Forest Service project.

Project headquarters - The tussock moth project is operating out of the Winthrop Work Center in Winthrop. If you are interested in more information about the project, contact the Forest Service at the number below:

Winthrop: Wayne Kleckner, Project Director or Jim Archambeault, Information Officer

Phone: 509-996-2832

More information and pictures: www.fs.fed.us/r6/nr/fid/dftmweb

**Instructions for updating the 996-4040
PHONE MESSAGE**

1. pick up handset
2. press 71
3. enter password 1-1-1-1-#
4. press 6 (to change personal options)
5. press 1 (mailbox options)
6. press 1 (to change your greeting)
7. press 1 (to record your primary greeting)
8. record message below (first you must listen to the old message before you record the new message)

Hello...you have reached the US Forest Service Douglas fir Tussock Moth Spray Project Information Line.

On _____(Day of week)_____ (Date), weather permitting, we plan to spray: _____ acres in the area(s) of: _____

Helicopters will be used to spray a naturally occurring virus, specific only to the Tussock Moth.

On _____(Day of Week)_____ (Date), _____ acres were sprayed in the area(s) of:

To date, _____ acres of National Forest land have been treated since spraying began on June 7th.

Spraying will usually occur between 5 and 8 am, due to the limited weather conditions under which spraying can occur.

Recreationists can use the areas that have been sprayed at any time, but may not want to be in the area when spraying actually occurs.

Please call 509-996-2832 or 996-2816 for more information.

This message will be updated daily.

The spring 2001 burning program has been completed, however you may continue to see smoke in Finley Canyon, and Little Bridge Creek areas. Forest Service crews are patrolling those areas.

Thank you and have a good day.

Other Message Machine Options:

9. press #, when done
10. press #, again
11. hang -up, then check the message from another phone

Okanogan and Wenatchee National Forests



Methow Valley Ranger District
Douglas Fir Tussock Moth Project

Date _____

Time _____

Daily Spray Project Information

On _____, _____, aircraft will be spraying _____ acres, in the following areas:

Total acres sprayed today: _____

Total acres sprayed to date: _____

Generally, spray operations will occur early in the morning between 5 and 8 am. However, if weather conditions allow, operations may last longer into the morning.

Areas being sprayed are available for use by recreationists.

A recording of our daily plans is also available at 996-4040

Project information is available at 509-996-2832 or 996-2816

For more information about the Tussock Moth, visit our website: www.fs.fed.us/r6/nr/fid/dftmweb

Douglas Fir Tussock Moth Project

Daily Fax Contact List

Agency	Name	Phone Number	Fax Number	Address
Chelan Ranger District		509-682-2576	509-682-9004	428 West Woodin Avenue Chelan, WA 98816
Cle Elum Ranger District		509-674-4411	509-674-1530	803 West 2 nd Street Cle Elum, WA 98922
Entiat Ranger District		509-784-1511	509-784-1150	2108 Entiat Way, P.O. Box 476 Entiat, WA 98822
Lake Wenatchee Ranger District		509-763-3103	509-763-3211	22976 Highway 207 Leavenworth, WA 98826
Methow Valley Ranger District	Tommy Days, Information Assistant	509-997-2131	509-997-9770	502 Glover, P.O. Box 188 Twisp, WA 98856
Methow Valley Visitors Center	Tommy Days, Information Assistant	509-996-4000	509-996-4060	Building 49, Highway 20 Winthrop, WA 98862
Okanogan Supervisor's Office	Kristy Longanecker, Information Assistant	509-826-3257	509-422-2014	1240 South Second Avenue Okanogan, WA 98840-9723
Wenatchee Supervisor's Office	Paul Hart, PAO, Robin DeMario, Information Assistant	509-662-4335	509-662-4368	215 Melody Lane Wenatchee, WA 98801-5933

Media	Name	Phone Number	Fax Number	Address
KOMW Radio, Omak		509-826-0100	509-826-3929	320 Emery St., Omak, WA 98841
KOZI Radio, Chelan		509-682-4033	509-682-4035	123 E. Johnson Avenue, Chelan
KVLR Radio, Twisp		509-997-5857	509-997-5859	109 W. Glover, Twisp, WA 98856
Methow Valley News	John Hanron	509-997-7011	509-997-3277	201 Glover, Twisp, WA 98856
Omak Chronicle		800-572-3446	509-826-5819	618 Okoma Dr., Omak, WA 98841
Quad City Herald			509-689-2507	525 W. Main, Brewster, WA 98812
Wenatchee World	KC Mehaffey			

Douglas Fir Tussock Moth Project**Daily Fax Contact List**

Business	Name	Phone Number	Fax Number	Address
Antlers Tavern		509-997-5693		132 Glover St., Twisp, WA
Jacks Hut		509-996-2752		
Mazama Store		509-996-2855		50 Lost River Rd, Mazama, WA
Sun Mountain Lodge		509-996-2211		Winthrop
Tenderfoot		509-996-2288		Winthrop
Twisp Community Center				
Winthrop Mountain Sports		509-996-2886		256 Riverside , Winthrop, WA 98862

MEDIA LIST

Media	Address	Phone #	Fax #
Methow Valley News	201 Glover, Twisp, WA 98856	509-997-7011	509-997-3277
Omak-Okanogan County Chronicle	618 Okoma Dr., Omak, WA 98841	800-572-3446	509-826-5819
Wenatchee World	124 2 nd Street, Okanogan, WA 98840	509-422-3848	509-422-3850
KOZI-Radio Lake Chelan	123 E. Johnson Avenue, Chelan	509-682-4033	509-682-4035
KVLR Radio	109 S. Glover Street, Twisp, 98856	509-997-5857	509-997-5859

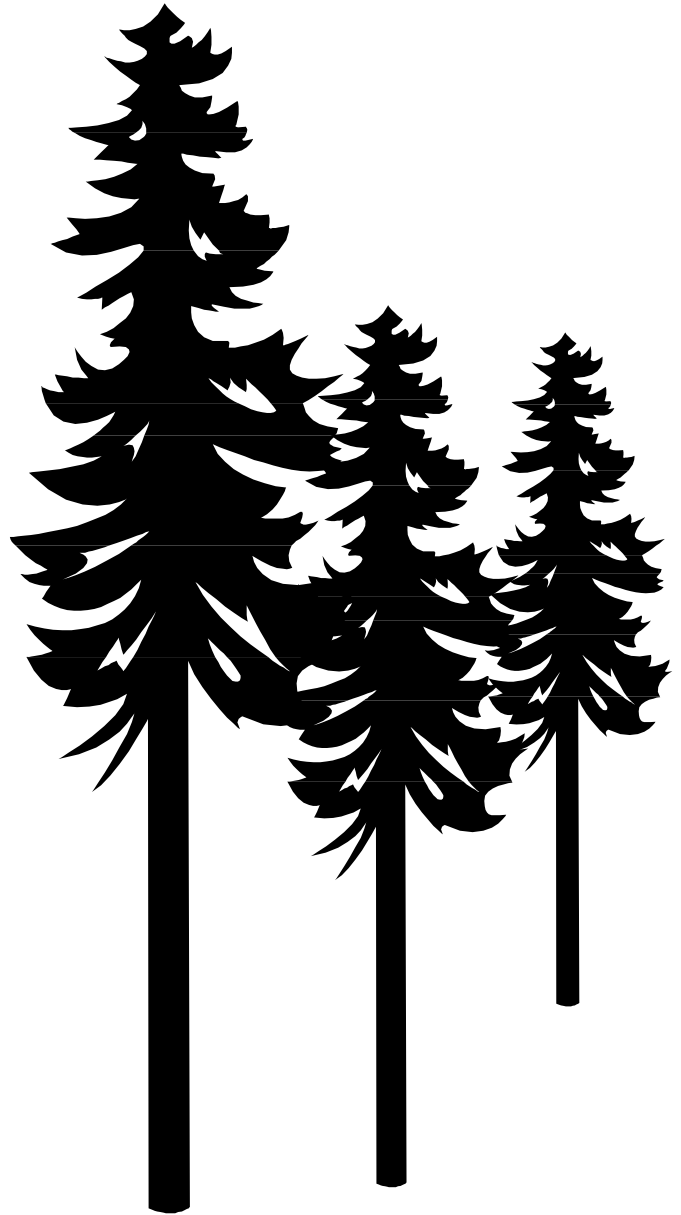
Douglas Fir Tussock Moth Incident Information Contact List

Name	Agency	Phone Number	Email	Address	Dates on Project
Archambeault, Jim	USFS, Okanagan National Forest	509-997-9738	jarchambeault@fs.fed.us	P.O. Box 188, Twisp, WA 98856	
Hart, Paul	USFS, Wenatchee-Okanagan National Forest, Public Affairs Officer	509-	phart@fs.fed.us	215 Melody Lane, Wenatchee, WA 98801-5933	Ongoing
Doug Jenkins	USFS, Wenatchee National Forest,		dsjenkins@fs.fed.us		3 days
Cathy Smith	USFS, Wallowa-Whitman National Forest	541-962-8549	kasmith@fs.fed.us	3502 Hwy 30, La Grande, OR 97850	
McAuliffe, Brian	USFS, Okanagan National Forest, Seasonal				May 30 – July, 2001
Perkins, Megan	USFS, Umpqua National Forest	541-767-5009	mperkins@fs.fed.us	78405 Cedar Park Road, Cottage Grove, OR 97424	July 1 – July 14, 2001
Tonn, Chuck	Contractor	509-997-2257		32 Lewisia Rd. Winthrop, WA 98862	May 15 – July 14, 2001

Public and Media Contact Log

Douglas Fir Tussock Moth

Spray Project



Douglas-fir Tussock Moth Project Final Report July 2001 Methow Valley
 Appendices—Appendix J Public Information Plan

Contact Codes

- | | |
|---|---------------|
| P – Public Meeting | T – Telephone |
| R – Recreation Contact, Campground or Trailhead | E – Email |
| H – Private Home, Cabin or Land Owner | M – Media |
| L – Vacation Lodge, Inn, Hotel, Motel | A – Agency |
| O – Outfitter | |

Time/ Date	Contact's Name	Phone Number	Questions/Comments/Action Taken	Contact Code
Feb 1	Winthrop Barn Open House		<p>Those present at the meeting: Ron Wonch, Wash. St. DNR, 193 Conconully Hwy, Okanogan, raon.wonch@wandnr.gov Tom Thank, 157 Lost River Road, Mazama, 996-8076, Brad Martin, Rt. 1 Box 240, Winthrop, bmartin@tmethow.com John Hanron, PO Box 97, Twisp, editor@methowvalleynews.com Ken Westman, 95 W. Chewuch Rd., Winthrop, elken@methow.com R. and B. Windish, 241 C Lost River Road, Mazama, 996-3311, Liz Tanke, 1495 First Cr. Rd., Chelan, 687-5607 Amy Marshall, 349 D, West Chewuch Road, Winthrop, orion@methow.com Ed and Vicki Welch, 932 A Twisp River Road, sunnypine@methow.com Dan Omdal, DNR, Olympia, domd490@wadnr.gov</p> <p>Also present: Connie Mehmel Kent Woodruff, John Rohrer John Daily Pete Soderquist John Newcom Arlo Vanderwoude Paul Flanagan Don Phillips Jennifer Zbyszewsk Jim Archambeault Jay Jenkins, County Extension, WSU</p>	P
Feb 7	Ken and Mary Lynn Woods		<p>Leahe Swayze received a phone call from these people. The email correspondence is as follows: I received a call this afternoon from Den and Mary Lynn Woods asking about the DFTM Spray Project. They own 13 acres across from North cascades base camp. They wanted information – and reassurance that we will spray the strip of federal land between Goad Wall and the private land, as has been requested by others also. I'm not sure which one of you is keeping the "contact" record, but they would like to be notified later whether the project is going to proceed and if that strip is included. Ken and Mary Lynn Woods, P.O. Box 43 Zionsville, IN 46077</p>	T

Douglas-fir Tussock Moth Project Final Report July 2001 Methow Valley
 Appendices—Appendix J Public Information Plan

Time/ Date	Contact's Name	Phone Number	Questions/Comments/Action Taken	Contact Code
Feb 7	Ken and Mary Lynn Woods		Leahe Swayze received a phone call from these people. The email correspondence is as follows: I received a call this afternoon from Den and Mary Lynn Woods asking about the DFTM Spray Project. They own 13 acres across from North cascades base camp. They wanted information – and reassurance that we will spray the strip of federal land between Goad Wall and the private land, as has been requested by others also. I'm not sure which one of you is keeping the "contact" record, but they would like to be notified later whether the project is going to proceed and if that strip is included. Ken and Mary Lynn Woods, P.O. Box 43 Zionsville, IN 46077	T
Apr 12	Ken Sletten		Report private land owner questions, referred to DNR	H
Apr 25	Bob Ulrick		Twisp, General Information	
May 2	Rob Tharlackson		Sun Mountain	L
May 5	Ron Wonch		DNR	A
May 7	Tom of WNP			A
May 8	R. Merryfield and Contract forester, Don Stragis and DNR			A
May 9	John Hayes			
May 9			Email to all on forest with project information.	E
May 9	D. Thayer		Kiwanis, on meeting	
May 9	Chris Chartes		PSM	
May 10	Blue Bradley		PSM	
May 15	Winthrop Kiwanis		25+ (M. Heath, etc.). Arch Dave and Wayne provided maps of area to be sprayed, explained Tussuckosis, what was in the spray and gave handouts.	P
May 15	Rocking Horse, Dave Swenson		Wolf Creek, Goat Creek. Arch Dave and Wayne provided maps of area to be sprayed, explained Tussuckosis, what was in the spray and gave handouts.	L

Douglas-fir Tussock Moth Project Final Report July 2001 Methow Valley
 Appendices—Appendix J Public Information Plan

Time/ Date	Contact's Name	Phone Number	Questions/Comments/Action Taken	Contact Code
May 15	Early Winters Outfitting		Aaron / Jody Burkhart, and employees, Sandy Butte, Goat/Fawn Routes. Arch Dave and Wayne provided maps of area to be sprayed, explained Tussuckosis, what was in the spray and gave handouts.	O
May 15	Freestone		Areas adjacent. Arch Dave and Wayne provided maps of area to be sprayed, explained Tussuckosis, what was in the spray and gave handouts.	L
May 15	Dick and Sue Roberts		North Cascades Basecamp, private entity. Arch Dave and Wayne provided maps of area to be sprayed, explained Tussuckosis, what was in the spray and gave handouts.	
May 15	Sun Mountain		Call activities center or concierge. Cedar Creek or Driveway. Arch Dave and Wayne provided maps of area to be sprayed, explained Tussuckosis, what was in the spray and gave handouts.	L
May 16	Julie Lagenburg and Michael Martin		Provided maps of area to be sprayed, explained Tussuckosis, what was in the spray and gave handouts.	
May 16	Mike and Laurie Myers		At KOA. Provided maps of area to be sprayed, explained Tussuckosis, what was in the spray and gave handouts.	
May 16	Bob Grainger		Lost River Resort. Provided maps of area to be sprayed, explained Tussuckosis, what was in the spray and gave handouts.	L
May 16	George Turner		Mazama Country Inn. Provided maps of area to be sprayed, explained Tussuckosis, what was in the spray and gave handouts	L
May 16	Jeff and Alyson Brown		Brown's Farm. Provided maps of area to be sprayed, explained Tussuckosis, what was in the spray and gave handouts.	
May 16	Winthrop City Council Meeting		Provided maps of area to be sprayed, explained Tussuckosis, what was in the spray and gave handouts.	P
May 18	KC Mehuffey		Wenatchee World. Background information.	M
May 21	John Hayes			
May 21	John Hanron		Methow Valley News, contacted.	M
May 24	Scott Dunham		PLOBS. May want speaker at their staff Training on June 11 and 12.	
May 25	News Release		News release ton 5/31 about Public Meeting to Newspapers and email list	M
May 25	Dee Camp, Chronicle		Sent fax of 5/18 information. Left message for KC Mehaffey at OMAK Chronicle.	M
May 25	John Hanron		Methow Valley News	M

Douglas-fir Tussock Moth Project Final Report July 2001 Methow Valley
 Appendices—Appendix J Public Information Plan

Time/ Date	Contact's Name	Phone Number	Questions/Comments/Action Taken	Contact Code
May 31	Open House		Open house was held at Winthrop Work Station. It is thought that there were 2-3 people in attendance.	P
June 4	Barb, Guest at Sun Mountain Called		Concerned about the effect of the spray on asthma sufferers. Should know concerns xxx her. She will look for daily updates at Sun Mountain.	L
June 6	Doug Perrin, Mazama Ranch House	996-2040	Concerned about helicopter noise on Sat. June 9, and Sun. June 10 at his Ranch House Inn, Mazama. Has group of Buddhist Monks coming in. Told him I would keep him informed, but have little control once spray blocks are released to the contractor.	L,T
June 6	Judy at Early Winter Outfitter		Tell her that spraying would begin Thursday AM. She thanked me.	O
June 6, 14:30	Mazama Area		Posted Goat Creek Trailhead for spraying 6/7. Talked to Scootie at Mazama Store and Dick at Base Camp Resort. All were cool with spraying 6/7. Dick had his resort sprayed by DNR today.	R
June 7, 07:30	Ellen and Ken Brown Called	996-2780	Very upset – Said they were sprayed and said, “they did not want to be”. Sent message by radio to OPS to have someone from DNR contact them.	H
June 7, 09:00	Called Ellen and Ken Brown		Left message to call me with their concerns	H,T
June 7	Mike Notaro		Wanted information on project. Already had received.	
June 7, 14:30	Ellen and Ken Brown	669-2780	Concern over spraying their property. Will visit. (Chuck called)	H
June 8, 11:15	Carol Gorrard	901144-1293-540-512	Tour. Faxed information	
June 8, 11:30	Helen Krakoy		Emailed information to helen_krahay@hotmail.com . Member of tour.	E
June 9, 9:15	Viola Eberly	996-3706	Mazama. Wedding Sunday morning. Does not want spray. Call when we get word.	H
June 9, 13:30	Viola Eberly	996-3706	Called and left message. Area they are having wedding will not be area to be sprayed, but . . . ?	H
June 10, 10:30	Freestone	996-3906	Informed them of spraying North of Freestone on 6/11.	L
June 10, 10:30	Early Winters Outfitters	996-2659	Informed them of spraying near them on 6/11.	O
June 10	Don Phillips, USFS	667-4019	Called Don to discuss some . . . Mon. AM at Early Winters Campground. (See original)	A

Douglas-fir Tussock Moth Project Final Report July 2001 Methow Valley
 Appendices—Appendix J Public Information Plan

Time/ Date	Contact's Name	Phone Number	Questions/Comments/Action Taken	Contact Code
June 11	Campground Hosts at Klipchuck Campground		Met Host and put out some more info sheets at some campsites.	R
June 11	Mazama Store		Talked to staff at store and gave them more info sheets.	B
June 11	Freeman Inn, Jeff Childs	996-3906	Didn't spray today due to rain and will try to spray tomorrow (weather permitting) from Early Winters to Looney to Little Boulder Cr.	L
June 11	Early Winters Outfitters	996-2659	Left Message – Didn't spray today due to rain and will try to spray tomorrow (weather permitting) from Early Winters to Looney to Little Boulder Cr.	O
June 11, PM	Campers (5 groups) Early Winters Campground		Told them we will spray near Early Winters Campground on 6/12 early AM if weather permits. (Note: It rained so we could not spray 6/12 AM)	R
June 12	Called Early Winters Outfitters	996-2659	Informed Judy that spraying will occur south of them on 6/13.	O
June 12	Called Freestone Inn	996-3906	Told them we would be spraying near the Inn on 6/13.	L
June 13	Bob ?	996-2777	Called to say he had photographed the spraying this AM. Good conditions. Will provide to Methow Valley News.	M
June 12	Recreationists at Ballard Riverview and Early Winters Campgrounds and Lost River Sno Park (About 9 groups)		Posted and distributed information sheets about DFTM project. Gave general info about the project. (We are not spraying in this area yet). One camper moved out (Maybe didn't want to hear helicopters in the early AM?)	R
June 13, 09:30	Freestone Inn		Called to ask how guests responded to helicopter noise this AM. Said they had some complaints.	L
June 13	WA Fish and Wildlife Campgrounds, Falls Cr., Flat, Nice, Ruffed Grouse and Honeymoon Campgrounds and 2 dispersed sites.		Posted DFTM info sign posters on signboards, and on some picnic tables.	R
June 13	Ranch House Inn, Mazama		Update on status of spraying and provided more info sheets.	L

Douglas-fir Tussock Moth Project Final Report July 2001 Methow Valley
 Appendices—Appendix J Public Information Plan

Time/ Date	Contact's Name	Phone Number	Questions/Comments/Action Taken	Contact Code
June 13	Mazama Country Inn		Update on status of spraying and provided more info sheets.	L
June 13	Basecamp on Lost River		Update on status of spraying and provided more info sheets.	O
June 13	Klipchuck Campground and Cedar Creek and Driveway Butte Trailheads and Perrygen State Park		Posted, re-supplied, distributed DFTM info sheets and talked to some recreationists (General Info about project).	R
June 14	Freestone Inn	996-3906	Called for Jeff Childs to meet with him to discuss project and noise impacts. He is not in until Friday. Left message with Beth.	L
June 14	Timberline Meadows Lodge	996-3949	Contacted owner to provide info. She complained that she had been sprayed and showed us spray on outdoor furniture.	L
June 14, 16:30	Lost River Area, Peggy ____ Hockmar, #706 B Simmons, #706 A		Talked to homeowners in or near Block 62. They were fine with being sprayed or having drift when we spray Block # 62.	H
June 14	Recreationists staying along Lost River		Gave info sheet and info about spraying. Will Spray within less than a week, probably.	R
June 14, 17:30	Shardon Flowers (mailbox), Lives by Lost River Resort (across Rd. from Jct. To airstrip). Brown house to the right of the other brown house.		Gave info sheet and told him we'd be spraying on NF land adjacent to his property, with in a few days to a week. He choose not to spray his private land so doesn't not want his land sprayed. I told Art A. and Chuck we need to check and adjust, change spray block boundary so we don't spray his land (by Block M64). Other people with cabins in that area are John O'hollerow, Ted Wagner, and Allie Long.	H
June 14, 18:30	Billy Hill, H & K Excavating, Twisp	509-669-6425 509-667-4044	He is working adjacent to Block M41. Gave him info sheets and told him we'd be spraying that area tomorrow, weather permitted.	B,H
June 14	John Hays	996-2792	Left message saying we'd be spraying that area tomorrow weather permitting.	H
June 14	Terry O'Reilly	996-3689	Tried to call him about 6 times over 45 minute period and phone was busy.	T,H

Douglas-fir Tussock Moth Project Final Report July 2001 Methow Valley
 Appendices—Appendix J Public Information Plan

Time/ Date	Contact's Name	Phone Number	Questions/Comments/Action Taken	Contact Code
June 14	Buck Lake in 8-Mile area		Info posters posted.	R
June 14, 19:00	Early Winters Campground Recreationists	D.L. : ATL 721 and KLM 756 British Columbia	Told them we are planning to spray in this campground early tomorrow AM and gave them info about spray and effects and project, etc. They decided to stay in the campground.	R
June 14, afternoon	Early Winters Campground		Put up large sandwich board signs saying we're planning to spray in campground tomorrow AM.	R
June 15, 06:30	Helibase Air Ops and Security		Went to helibase to talk to any public people there, to answer any questions and give info about spray project. No public folds there then. Security man has handouts to give to public that stop by.	A
June 15, AM	Early Winters Campground		Collection officer refunded fee for camping last night because we sprayed in campground this morning (2 campers were there). Info officer accompanied collection officer.	R
June 15, 12:45	KC Mehaffey, Wenatchee World Newspaper	997-3025 (?) 422-3848 (?) 422-3850 (?)	Gave her update on status of project. She'll check with her editor to see where they want to go with this. Told her we could probably get photos they could use or they could come out and get photos, if they want to.	M
June 15, 14:00	John Hanron, M. V. News	997-7011	Not in – Will connect on Monday	M
June 15, 14:05	Jeff Childs, Freestone Inn	996-3906	Called to discuss spray project with Jeff Childs. See about impacts on guests and if we could provide info	L
June 15, 17:00	10 homeowners on Lost River Road between Yellowjacket Sno Park and Goat Wall	Anderson Gray Allen Rogers Rea Hoyness & Others	Gave info sheets and update on project and said we'll be spraying on National Forest land next to their property in the next week or 2. Left note saying this and info sheet at houses and cabins where no one was there.	H
June 15, 18:30	Dispersed recreation sites along Methow River between Ballard Campground and Forest Boundary, near Lost River.		Posted Info Sheets at about 11 sites, couple of recreationists in that area.	R
June 15, 19:30	Miller Realty, Jolly Miller	996-3148	Msg to tell him we plan to spray tomorrow (Sat 6/16 AM) on NF Land near Goad Cr. About ¾ miles SE of his property.	H
June 16, 0700	Helibase		Briefing and Tour of Helibase with Entomology Crew.	A

Douglas-fir Tussock Moth Project Final Report July 2001 Methow Valley
 Appendices—Appendix J Public Information Plan

Time/ Date	Contact's Name	Phone Number	Questions/Comments/Action Taken	Contact Code
June 16, AM	Early Winters Campground, 2 Recreation Groups		Explained the project and status of it and showed them Tussock Moth larvae and collected samples to take back to the office and collected larvae that had been sprayed yesterday.	R
June 16	Browns Farm (Rent cabins and rest stop on Methow Valley Trail)		Gave info sheet and update on spray project.	L
June 16	Chris Moore		Wanted to know where we will plan to spray tomorrow. They are planning backpacking trip. Harts pass and Silver Lake are not in spray blocks and are 4 + miles away from closest spray block.	H
June 16	Contacted users up Valley, Ballard, Rivers Bend			R
June 16	Mazama Store		Talked to owners. Have not had complaints about helicopter noise.	B
June 16	About 75 cabin owners and home owners in the area around Lost River Airstrip		Left info sheets about project and sheet saying you are outside spray areas but near spray area and will see/hear helicopters for the next several weeks. Left info sheets and made contacts at about 75 cabins and homes. Only found 15% approximately of the cabins/homes had people who were there.	H
June 16	Campers at dispersed rec site on road above Yellowjacket Sno- Park		They are inside block planned to be sprayed tomorrow AM. Gave them info about project and spraying and tussock moths. They are looking forward to seeing the helicopters spray tomorrow.	R
June 17	Pat – Visitors Center		Three Fingers Jack Restaurant asked to be taken off the daily fax info list. He said we were doing a great job and to carry on. He felt he doesn't need to keep knowing specific areas and acres we are spraying each day.	A
June 17, PM	Dispersed camping and recreation areas along upper Methow River above Lost River and Up to Rattlesnake area.		Did not find anyone camping overnight who will be here in the morning when this area is sprayed. About 8 groups of recreationists were leaving the area. Talked to several day use recreationists who won't be spending the night and won't be in the area when it is sprayed tomorrow morning. Posted several DFTM info posters at 4 more places in these dispersed sites (part of Block 53).	R

Douglas-fir Tussock Moth Project Final Report July 2001 Methow Valley
 Appendices—Appendix J Public Information Plan

Time/ Date	Contact's Name	Phone Number	Questions/Comments/Action Taken	Contact Code
June 17	Ballard and River Bend Campgrounds. Monument and Robinson Trailheads and Rattlesnake Trailhead		2 groups camped in campground. 2 groups will be leaving the area. 3 vehicles at trailheads. Posted signs that say these areas are in the area to be sprayed sometime between now and July 15 approx. Told these people they will hear and see helicopters, but they are not in the spray block. This is the other part of block 53.	R
June 17, 1830	Group of 15 college students and professors staying at Whidbey Island, WA this summer and doing field experience. Students majoring in Biology, Botany, Entomology and Environmental Studies, etc.	Michigan 20Y 117	Camped along upper Methow River near Rattlesnake Camp area and trailhead. Great real life opportunity for students to learn about real life DFTM project. Shared info sheets and info about project and Tussock Moths etc.	R
June 17	Paul Hart, Forest PAO	Fax at SO Wenatchee, 622-4368	Email update with status of project and info about spraying around campgrounds. Gave info about supportive response from public over all, etc.	A
June 18	Robin De Mario, Info Assistant, SO, Wenatchee		Gave update about project, acres, public response, etc.	A
June 18 and each day	Daily Fax Group Fax List		We fax out daily project update sheet each day to a group fax mailing list, through the FS Twisp office.	A
June 18 and each day	Recorded phone message on 996-4040		We update the recorded message on 996-4040 each day with status of the project.	A,T
June 18	Dispersed camp sites past Forest boundary in 8-Mile Ranch (Chewuch Info Board and snowmobile info board)		Posted general DFTM info posters at 3 sites.	R

Douglas-fir Tussock Moth Project Final Report July 2001 Methow Valley
 Appendices—Appendix J Public Information Plan

Time/ Date	Contact's Name	Phone Number	Questions/Comments/Action Taken	Contact Code
June 19	Paul Hart Wenatchee SO	622-4369, SO Fax	Email update with status of project and info about spraying around campgrounds and gave info about supportive response from public overall, etc.	A
June 19	Elton Thomas O/W N.F.		Called to find out how program is going for mtg. Gave him information	R
June 18, 1830	Buck Lake Campground and Flat Campground		5 groups in campground. Told them about spraying and project and restocked info sheets on picnic tables, as needed. Will spray about ¾ mile from Buck Cr. Campground so they may hear/see helicopters and will spray right next to (not in) Flat Campground on 6/19.	R
June 18	Pat, Visitors Center		Update and fax lists.	A
June 19	Twisp FS RD office		Update and fax lists.	A
June 19	Kristy Longanecker, Okanogan Office		Update on project. We need to send fax to them to say attention Public Affairs, so that it will get from Dispatch to Public Affairs, or we could email update. She is putting updates on website. She'll fax us a copy of their media list. Told her summary of public/ recreationists comments about project	A
June 19	Deb Kelly		See above entry	A
June 19	John Hanron, Methow Valley News		Will use black and white photo in this weeks M.V. News with photo info.	M
June 19	Various property owners along the East Chewuck on the 5010 Rd.		Left fliers at each site (about 17 cabin/home owners.	H
June 19	About 20 cabin/home owners on the west side of the Chemuch River below 8-mile ranch		Talked to the few people who were there and left info at other cabins. General info sheet and sheet saying you're outside spray area but will hear and see helicopters.	H
June 19, 1830	5 homeowners/ landowners in Lost River area by junction of Lost River and Upper Methow River		Informed them of Spraying planned for Monument Creek Trail area on 6/20 and other areas nearby in the next 3 weeks or so. All these people are supportive of spraying and okay if any drift spray gets on their land.	H
June 19	Monument Creek Trailhead		Posted information that this area is planned for spraying on 6/20 (Monument Creek Trail Area)	R
June 19, 1900	Rob Thorlakson	996-3246	He reported smoke in some Forest prescribed burn unit, inside the fire line. No flam just smoke and smoldering. Reported this to Pete Soderpriest, Fire Management Officer.	

Douglas-fir Tussock Moth Project Final Report July 2001 Methow Valley
 Appendices—Appendix J Public Information Plan

Time/ Date	Contact's Name	Phone Number	Questions/Comments/Action Taken	Contact Code
June 19, 1930	Freestone Inn	996-3906	Told them that spraying is planned on 6/20 for area between Early Winters Creek and Looney creek.	L
June 20	Downtown Winthrop, Recreationists, tourists, local residence		Talked to about 5-6 people about DFTM project and general FS questions and rec questions	B
June 20	Meadow Campground and Harts Pass Campground		Posted general DFTM info sheets and talked to campers. No spraying planned for 6/21 because no blocks are ready to be released.	R
June 21	Called Tracy Sonyemectera		Told her about spraying Ballard and River Bend Campgrounds on June 22, AM.	R
June 21	Called Wenatchee and Okanogan PAO	Kristy Longenecker and Paul Hart	Told them about spraying campgrounds on 6/22. Spraying in Ballard and River Bend Campgrounds	A
June 21, 1500- 1600	Freestone Inn, Mazama Inn, Ranch House, Early Winters Outfitters, Mazama Store		Checked in with all places. All were happy. No Complaints from guests. Are hearing helicopters.	L,B,O
June 21	Robinson Creek Trailhead, Ballard and River Bend Campgrounds, Rattlesnake area dispersed sites, Harts Pass Road		Recreationists in those areas. General DFTM info. Saw about 5 parties in those areas. Put up large sandwich board signs telling it will be sprayed in Ballard River Bend and Rattlesnake. No one camping overnight in Ballard and River Bend Campgrounds as of 1830 on 6/21. We plan to spray in those campgrounds on June 22.	R
June 21	Ellis – Recreation Specialist at Winthrop		Arranged for collection officer to go out to Ballard and River Bend Campgrounds June 22, AM to refund money after we spray campgrounds. June 22, collection officer not needed in the end, because not one camped overnight in those campground, on 6/22.	R
June 22	Paul Hart, PAO, Wenatchee SO, Robin DeMario, Kristy Longanecker, Deb Kelly		Spray plans for tomorrow, June 23 including spray next to Klipchuck Campground and Buck Lake Campground and other areas. Total 1259 acres planned for 6/23 and atus of wsthat completed.	A

Douglas-fir Tussock Moth Project Final Report July 2001 Methow Valley
 Appendices—Appendix J Public Information Plan

Time/ Date	Contact's Name	Phone Number	Questions/Comments/Action Taken	Contact Code
June 22	Campers in Buck Lake Campground and dispersed sites along 8-Mile Creek and Ruffed Grouse Campgrounds		Told recreationists that we plan to spray next to Buck Lake Campground June 23. We also plan to spray about ¼ mile south of Ruffed Grouse Campground. Talked to 3 groups at Buck Lake. Gave general DFTM info and handout sheets. 1-2 groups at dispersed sites.	R
June 22	Klipchuck Campground – Campers		Gave info to about 12 groups camped in campground that we'll be spraying right next to Klipchuck Campground June 23. Gave general DFTM spray project info.	R
June 22	Lone Fir Campground and other recreationists in area		Gave DFTM info and posted info sheets on bulletin boards in campgrounds.	R
June 22	Early Winters Outfitters		Told them we would be spraying in Klipchuck area.	L
June 23	About 11 homeowners in the Wolf Creek Area (upper portion of Wolf Cr. Closer to NF Boundary)		Told them spraying will start in Wolfe Creek area on June 24 and will continue intermittently for 2-3 weeks. People okay with spraying and project.	H
June 23	Wolf Creek Trailhead		Posted signs that spraying starting 6/24, and will continue intermittently for 2-3 weeks. 2 vehicles at trailhead.	R
June 23, 1730	Sun Mountain Resort		Gave them information sheets to handout and general DFTM information and told them we'll be spraying up Wolf Cr. (1 st Day) on 6/24 and intermittently until mid-July.	L
June 23	Curious/ Concerned campers that stayed at Klipchuck Campground on June 22, PM		Arrived at campground after dark and did not see signs about spraying next to campground. 6/23 AM talked to campground host but wanted more details about spray project. Went to helibase and Lynn Wyatt and Mike Carney explained and shoed them about the spray project. Good job guys!	R

Douglas-fir Tussock Moth Project Final Report July 2001 Methow Valley
 Appendices—Appendix J Public Information Plan

Time/ Date	Contact's Name	Phone Number	Questions/Comments/Action Taken	Contact Code
June 23	Robinson Creek and Monument Trailheads. Ballard and River Bend Campgrounds and dispersed sites between monument and Rattlesnake Trailheads (16 parties in these areas)		3 parties not happy about 0500 helicopters and 2 parties looking forward to air show. Explained that spray not harmful to anything but tussock moth, to alleviate some concerns. One party camped at Klipchuck Campground 6/22 PM when sprayed next to campground 6/23 and did not want to be woke up at 5 am by helicopters again and are leaving now and won't stay at River Bend Campground now and asked to have their money refunded, \$3.00. I will give this info to collection officer to refund their money: Chris Kuhr, 1525 2 nd Ave. West, Seattle, WA, 98119. 206-270-9766.	R
June 24	Betsy Cushman, lives near Lost River Airstrip	996-3905	She lives close to Lost River Airstrip and has been waked up by helicopters about 5 am quite a few days. Would like us to let her know when we will be landing and loading a batch at Lost River Airstrip. Told her we weren't landing and loading at Lost River Airstrip on 6/25. We have already sprayed quite a bit of the area around there, but we still had some more to spray in that area. All spraying should be done around mid-July.	H
June 24	Twisp Office, Pat and Tommy	997-9770 Fax	Please fax out our daily project info update sheets to your group fax list, as you have been doing each day.	A
June 24	Paul Hart, PAO, Wenatchee and Robin DeMario, Kristy Longanecker and Deb Kelly, Okanogan PAO.	509-662-4368 509-422-2014	Faxed daily spray project info update sheet.	A
June 24, 0300	Spraying		Observe and photograph spraying and help record weather observations (Kathy)	
June 24	Early Winters Outfitters	996-2659	Plan to spray area along Cedar Creek Trail below Cedar Falls and area near road to Cedar Creek Trailhead as well as other areas on 6/25.	O
June 24	Visitor Information Center		Gave project status update.	A
June 24	Freestone Inn at Wilson Ranch	996-3906	Plan to spray by Cedar Creek Trail and South of Early Winters Creek between Pekin Creek and Cedar Creek on 4125. She hasn't heard any comments from guests lately (from evening shift). They have information posted at the front desk.	L
June 24	Cedar Creek Trailhead		Posted information and talked to one party telling them that we plan to spray 6/25. Cedar Creek Trail below Cedar Falls and trailhead. Also we'll be spraying other areas near there between now and July 15.	R
June 24	Eight Mile Cr. And Nice Campgrounds and dispersed sites near there.		Project info and plant to spray one area by 8-Mile Creek on 6/25.	R

Douglas-fir Tussock Moth Project Final Report July 2001 Methow Valley
 Appendices—Appendix J Public Information Plan

Time/ Date	Contact's Name	Phone Number	Questions/Comments/Action Taken	Contact Code
June 25	Linda Harris	206-870-0475	Called and left message regarding Family Reunion June 30-July 4 in Lost River Airport areas. Called her back and left message. Would like to meet with her and discuss.	H
June 25	Lee Miller	996-2725	Called to let Lee know we would be spraying near his brothers (Jolly Miller) cabin, near Flagg Mtn. Not concerned. All okay.	H
June 25	Paul Hart Office: Robin DeMario, Wenatchee and Kristy Longanecker, Okanogan PAO		Status update of project and how things are going. Wenatchee and Okanogan PAO offices have received 0 or very few calls from public about spray project.	A
June 25	Marilyn, Methow Valley News		They are getting duplicate copies (2) of our daily fax updates. I told her this is because we are faxing info out to 2 group fax mailing lists from Twisp office. She said they could probably live with it. We'll be done spraying by mid-July.	M
June 25	Tedra, Freestone Inn	996-3906	We're planning to spray near Cedar Creek again on 6/26. (Flight path is not right over Freestone.) She hasn't heard any comments from visitors about spraying or helicopters. They had a light load of guests last night.	L
June 25, 1130	Paul Hart, PAO		Talked about project and accomplishments/ concerns. He will be up next week.	A
June 25	Deb Kelly, PAO Okanogan	826-3275	Deb will be up Wed. June 27. She is new to the job in Okanogan.	A
June 25	Early Winters Outfitters	996-2659	Message: We plan to do more spraying in Cedar Creek area on 6/26.	O
June 25	Flat Campground, Nice Campground, Ruffed Grouse Campground, Honeymoon Campground, Billy Goat Trailhead, and 6 dispersed sites by Eight Mile Creek		Talked to Campers in these areas (about 5 parties in Campgrounds and dispersed camp sites). Posted DFTM info sheets at 6 dispersed sites. Gave general project info. Plan to spray an area 1 ¼ mile south of Ruffed Grouse Campground. Posted info sheets at trailhead signboards. 8 vehicles at trailhead.	R

Douglas-fir Tussock Moth Project Final Report July 2001 Methow Valley
 Appendices—Appendix J Public Information Plan

Time/ Date	Contact's Name	Phone Number	Questions/Comments/Action Taken	Contact Code
June 26	Linda Harris, Cabin owner by Lost River Airstrip	206-870-0475 (home)	No phone at her cabin at Lost River. Could get a message to her 6/29 – 7/4 thru the managers of Lost River Resort. Cindy and Bob Granger, Managers, 996-2537 or phone at Brown motel/cabin rental units at Lost River Resort. 996-8153. They are having a family reunion with about 50 people at their cabin. (1 st cabin on SW side of Lost River Airstrip, closest to cement pad where spray helicopter has landed) from June 30-July 4. Concern for rotor wash, wind and dust for tents if we land at airstrip. There is about 1600 acres left to spray all around Lost River area that could be batched out of Lost River Airstrip. Would only batch there if we had over 400 acres to spray there is one day. They can move their tent camping area to a couple other lots farther away from the cement pad where the helicopter lands, to be away from the dust and wind caused by the helicopter. Linda Harris will call us each day between June 29 and July 4 to find out where we'll be spraying the next day and whether we will batch a load and land at Lost River Airstrip the next day.	H
June 26	Ellis, Methow Valley Ranger District		District made decision to waive campground use fee in Klipchuck campground from 6/27-7/12, approximately, while spraying in and near campground. We helped recreation by making and laminating 50 posters with this message to put on tables and bulletin boards in the campgrounds.	A, R
June 26, 1300	Air Ops.		No spraying planned for tomorrow due to rain.	
June 27	Deb Kelly		New PAO from Okanogan. Came by with District Ranger to see Moth Headquarters.	A
June 27, each day	Coordinate with Entomologist and Air Ops		Get info about blocks released and spray plans for the next week and blocks dropped and blocks added. Rain today, no spraying on 6/27.	A
June 27, 1730	Klipchuck Campground		Talked to campers (4 parties) in campground and posted large sandwich board sign near entrance and distributed posters about waiving fee in Campground due to spraying at all tables and signboards. Plan to spray in Klipchuck campground and other areas near campground on 6/28 weather permitting. Good time to spray campground, low number of campers on a Wednesday night and following cool wet weather, less campers there.	R
June 27	Ellis and Jean, Rec Techs.		Msgs: We plan to spray in and around Klipchuck campground on 6/28, weather permitting, or on 6/29 if we can't spray on 6/28. We visited campground and posted big sandwich board sign about spraying and talked to campers and helped distribute fee waiver posters on tables.	R
June 27	Early Winters Outfitters	669-2659	Plan to spray around Early Winters Creek, and Klipchuck Campground 6/28, weather permitting.	O
June 27	Freestone Inn, Lily	996-3906	Plan to spray around Early Winters Creek, and Klipchuck Campground 6/28, weather permitting	L
June 28	Called Wenatchee and Okanogan PAO		Leave update and informed them we had sprayed Klipchuck Campground	A
June 28	Carlton General Store		Wanted to get off daily fax list. Just let them know when project is complete. Done 6/28.	B
June 28	Dan White	541-962-6572	Called Winthrop to come video helicopters spraying for PNW station, La Grande. Put him in touch with air ops. Also, Dave Bridgewater involved.	A

Douglas-fir Tussock Moth Project Final Report July 2001 Methow Valley
 Appendices—Appendix J Public Information Plan

Time/ Date	Contact's Name	Phone Number	Questions/Comments/Action Taken	Contact Code
June 28	Sonny O'Neal		Forest Supervisor visited incident Headquarters. Attended General Staff Meeting and gave update. Asked questions.	A
June 28	Pacific Institute		Contacted at Klipchuck Campground. Answered questions and provided info about the project.	R
June 28	Various Campers		Klipchuck Campground. Informed them of spray project. Answered questions, let them know we'd be spraying 6 & 7 in the AM.	R
June 29	Lost River Airport, Linda Harris		Attempted to contact Linda Harris about family reunion. Not there yet.	H
June 30	Lost River Airport, Linda Harris		Met with Linda. She was positive about spraying and any impacts on family reunion. Will keep her informed.	H
July 1	Contacted Linda Harris, Lost River Airport		50+ family. They were happy when I told her we would not spray Monday also.	H
July 1	Contacted Folks in Ballard and River Bend		All were fine with us spraying, but happy they did not hear helicopters this AM.	R
July 1	Mazama Store		Just stopped in to see how things were going and if any one had complained about early AM helicopters. None had.	B
July 2	Lost River, Linda Harris		Attempted to contact Linda, no one home.	H
July 2	Paul Hart, PAO		Paul Called to check in and get update on project.	A
July 3	John Hanron, Methow Valley News		Contacted to see if interested in covering Tussock Moth Project in newspaper. Will contact later to see if they are interested in a final coverage.	M
July 3	8-Mile Campgrounds		Pulled as many tussock moth posters as could be found. Total 43. Spoke to about 4 camping groups about the project. No concerns.	R
July 3	Winthrop Visitor Center		Checked in. Introduced myself. Brought back Larvae display jar. All larva were dead and molding. Hope to get a replacement display to the VC. Will talk to Connie.	A
July 4	Jim Archambeault	997-9738	Left message regarding getting together with him to get information about what happened earlier in the project with public information. Need some clarification on some notes.	A
July 4	Robin Merrifield	996-3863	Contacted to see if he would do a write up regarding what worked and what didn't work regarding his role in the project. He will send a write up in 5-10 days.	A
July 4	Jim Archambeault		Called back. Will meet with the information group on July 12 at 8:00 AM to discuss what worked and what didn't work on the project and to look at recommendations for future spray projects.	A

Douglas-fir Tussock Moth Project Final Report July 2001 Methow Valley
 Appendices— Appendix J Public Information Plan

Time/ Date	Contact's Name	Phone Number	Questions/Comments/Action Taken	Contact Code
July 5	Paul Hart, Wenatchee PAO		Chuck Tonn, Paul Hart, and Megan Perkins went out to look at high infestation areas in Early Winters Campground, Klipchuck Campground, and areas around Mazama and Lost River.	A
July 6	Spraying Occurred		Spraying occurred today in three areas. See fax info sheet for details.	
July 6	Eight Mile		Collected remaining signs posted at two Washington Dept. of Fish and Wildlife campgrounds.	
July 8	Dan White		Called to see if there were any opportunities to catch the spray operation in action. Reported that we would be spraying July 9 at 0400. He was unable to make it to that operation.	M
July 10	Entomology Crew		Signs were removed from Mazama and Wolf Creek. All signs should be removed now.	
July 11	Megan Perkins		Letters were sent to District Ranger for signature and to be mailed to local business.	
July 11	Megan Perkins		News Release was sent to local media regarding the close of the project. Faxes were sent to Methow Valley R.D. via email, KVALR Radio, Okanogan Public Affairs, Wenatchee Pubic Affairs, KOZI Radio, Wenatchee World, Methow Valley News, and attempts were made to send to Omak-Okanogan Chronicle.	M
July 11	Paul Hart, Deb Kelly		Paul and Deb were scheduled to stop by the office. This plan changed when a fire broke out up Eightmile.	
July 11	Chuck Tonn		Chuck delivered the letters to businesses to the Ranger District Office for John Newcom's signature. I included a note with the packet that after a signature has been acquired that someone would need to put letters in an envelope and mail. Envelopes were included.	
July 11	Megan Perkins		Final report for Information was completed. Files are saved on the J drive for Jacque to access and hard copies were given to the IC, Art Anderson. A copy was made for Wayne Kleckner. Files were sent via email to Paul Hart, Jim Archambeault, Kathy Smith and Megan Perkins.	

PROPOSED CONTRACTS FOR ADVISORY AND ASSISTANCE SERVICE ("Under")\$25K

1. **Name, agency, office address, and telephone number of person to contact about the proposed procurement.** JIM ARCHAMBEAULT, OKANOGAN-WENATCHEE NF. Methow Valley RD, PO Box 188 Twisp, WA 98856. 509-997-9738 or Wayne Kleckner, Douglas Fir Tussock Moth Project Director, at 509-996-2832
2. **Describe the services to be performed, including any deliverables to be provided. Attach a copy of the statement of work, if one has been prepared.** Assist in forest service public information needs, as needed, for the Douglas Fir Tussock Moth Spray program. See statement of work, below.
3. **What is the total amount of time for completion of the project?** Approximately May 15 thru July 30th 2001.
4. **What is the total estimated cost of the project (including cost of options or out years)?** \$30/hour for 10-15 days, not to exceed 200 hours during the above time period, on a call when needed basis.
5. **Is funding available for this requirement? Please provide documentation showing that funds are available for the initial period of the requirement. If funds have not yet been made available for the requirement, explain how the proposed contract will be funded.** Funding is available from appropriated funds for the project (JOB CODE S4OP04)
6. **Why can't the required services be performed by government personnel?** Outreach efforts for detailers, locally and regionally have been only unsuccessful. Additionally, the nature of the project, which involves some controversy, means that there may be un-expected needs for help in the public affairs arena. Shifting personnel (the original IIO for the job has been detailed elsewhere) means that there is an immediate need for help.
7. **What program objectives will be served by award of the proposed contact? What negative consequences are anticipated if the proposed contract is not awarded?** Project objectives of accomplishing the spray target will be met. If not awarded, public information needs relative to that accomplishment may not be met.
8. **If similar or related work has been performed previously for the same project or program, please describe the services performed and their relationship to the current request.** None that I am aware of.
9. **Is it intended that the contract is to be awarded on a sole-source basis? If so, please justify why the contract must be awarded sole source.** Proposed contractor is a 30-year veteran of public affairs work, and is available locally on an as needed basis. If position is not filled, harm to the Government will occur in that public information needs will not be met on very visible \$2,000,000 spray project. Public sentiment could mean that the project could be in danger.
10. **If the answer to question 9 is "No," have you identified a particular company or individual whom you are recommending to provide the services?**
11. **If the answer to either question 9 or question 10 is "Yes"**
 - a. **Please provide the name and business address of the individual or company (the vendor).**
Chuck Tonn, 997-2257, 32 Lewisia Road, Winthrop WA 98862

- b. **Please describe any contacts, which have occurred between the vendor and USDA employees concerning the proposed contract. Such contacts include correspondence received from the vendor as well as discussions or correspondence between the vendor and the agency or mission area.** Inquiries about his interest and availability, and costs have been made by myself and Paul Hart, OKA-WEN PAO.
 - c. **Has the vendor already done any work on the project, such as drafting a description of the requirements? If so, please describe the vendor's current involvement with the project.** No
12. **If subcontracts are anticipated, will the prime contractor be required to direct work to a particular individual or company? Directed subcontracts are not favored because they restrict competition, may interfere with the prime contractor's independent judgment, and may increase the Government's risk from a business standpoint. If you nevertheless intend to direct subcontract work to a particular source or sources, please justify why you intend to do so.** No
13. **Is there any possibility of the appearance of a personal or organizational conflict of interest if award is made to the recommended individual or company? No If so, please explain. An organizational conflict of interest "means that because of other activities or relationships with other persons, a person is unable or potentially unable to render impartial assistance or advice to the Government, or the person's objectivity in performing the contract work is or might be otherwise impaired, or a person has an unfair competitive advantage." (Federal Acquisition Regulation (FAR) 9.501)**
14. **If the proposed contract or requirement was not submitted within the schedule for quarterly review, please also explain why this requirement was not included in the list of advisory and assistance services contracts submitted for this fiscal quarter.** Planning for the project staffing has occurred only in the last month, as dictated by entomological reports. Loss of the lead IIO on the project occurred on 5/24/01, necessitating a replacement.

Signature and Title /s/ James R. Archambeault

Date 5/29/01

Statement of work for Public Information contractor

Perform the following duties on the Douglas Fir Tussock Moth spray Project at the direction of Project Director and other Command and Staff of the project;

- Prepare news releases and other materials for public information,
- Contact forest visitors, residents and businesses to inform them of the project,
- Handle inquiries from media and the public about the project via phone calls, and personal visits,
- Interface, as necessary, with other project team members to accomplish project public affairs goals.

Wayne Kleckner, Project Director, is a suitable COR. 509-996-2832.
Additional financial details available from Sharon Cathcart at 509-996-2832.

Management code S4OP04

Douglas-fir Tussock Moth Project Final Report July 2001 Methow Valley
Appendices— Appendix J Public Information Plan



United States
Department of
Agriculture

Forest
Service

Okanogan and Wenatchee NFs
Methow Valley Ranger District

502 Glover, P. O. Box 188
Twisp, WA 98856
Phone (509) 997-2131

File Code: 1600

Date: July 10, 2001

Dear _____,

The Douglas-fir Tussock Moth Suppression Project is nearing completion. We would like to pass along to you the results of our efforts and we would also like to take this opportunity to thank you for your support.

The initial results of the spray project using TM-BioControl-1, the virus specific to the tussock moth, has been very positive. The Project entomology crew is finding that the tussock moth populations are considerably reduced in areas that have been treated. We had projected that 30,361 acres in three major areas would need to be treated. Those areas included Eightmile Creek, Wolf Creek, and Mazama. Of those 30,361 acres, only 16,689 were sprayed. This is due to low population findings in many of the blocks, mainly in the Eightmile area because the outbreak did not progress from the initial Fall populations found.

On behalf of the Methow Valley Ranger District and the Project Team, we would like to thank you for the much needed support to our project. *(Please insert statement here regarding specific businesses that you worked with)*

In the future, should the Forest Service have other projects that need support in order to meet forest management objectives, we would look forward to utilizing your services.

For more information regarding the Douglas-fir Tussock Moth Spray Project, please feel free to contact the Methow Valley Ranger District Office.

Sincerely,

Wayne A. Kleckner,
Incident Commander

John E. Newcom
Methow Valley District Ranger

The above letter was sent to the following businesses and organizations:

Douglas-fir Tussock Moth Project Final Report July 2001 Methow Valley
Appendices— Appendix J Public Information Plan

Mazama Store and Fly Shop
Pardners Mini Market
Winthrop Motors
Quality Lube, Twisp
Ace Hardware
Daily Business, Twisp
Les Schwab Tire, Twisp
Ulrich's Valley Pharmacy, Twisp
Aero-Methow Rescue
Rusty's Car Rental
Two Rivers Café
Duck Brand
Three Fingered Jacks
Hometown Pizza, Twisp
Boulder Creek Deli
Sheri's Ice Cream
Winthrop Red Apple Market
Hanks Market, Twisp
Winthrop Chamber of Commerce
Sun Mountain Lodge
Freestone Inn
Mazama Ranch House
Mazama Country Inn
Early Winters Outfitters
Tenderfoot
Aero-Methow Rescue Service
Winthrop Visitor Center

Douglas-fir Tussock Moth Project Final Report July 2001 Methow Valley
Appendices— Appendix J Public Information Plan



United States
Department of
Agriculture

Forest
Service

Okanogan and Wenatchee NFs
Methow Valley Ranger District

502 Glover, P. O. Box 188
Twisp, WA 98856
Phone (509) 997-2131

File Code: 1600

Date: July 10, 2001

Dear Editor,

The Douglas-fir Tussock Moth Suppression Project is nearing completion. We would like to pass along to you the results of our efforts and we would also like to take this opportunity to thank the community for their support.

The initial results of the spray project using TM-BioControl-1, the virus specific to the tussock moth, has been very positive. The Project entomology crew is finding that the tussock moth populations are considerably reduced in areas that have been treated. We had projected 30,361 acres in three areas would need to be treated to protect ecosystem habitats, to retain scenic values and to preserve recreation sites. Those areas included Eightmile Creek, Wolf Creek, and Mazama. Of those 30,361 acres, only 16,689 were sprayed. This was due to low population findings in many of the blocks, mainly in the Eightmile area because the outbreak did not progress from the initial Fall populations found.

On behalf of the Methow Valley Ranger District and the Project Team, we would like to thank the community for the much needed support and patience for this project. Many businesses and members of the community displayed tremendous amounts of flexibility and helped provide solutions to help us accommodate the completion of this project.

For more information regarding the Douglas-fir Tussock Moth Suppression Project, please feel free to contact the Methow Valley Ranger District Office.

Wayne A. Kleckner
Incident Commander

and

John E. Newcom
Methow Valley District Ranger

Letters of appreciation were sent to the following addresses:

Pardners Mini Market Hwy 20 Winthrop, WA 98862	Urlich's Valley Pharmacy Inc. E Methow Valley Hwy. Twisp, WA 98856	Methow Valley Visitor Center 49 Hwy 20 Winthrop, WA 98862
--	--	--

Appendices— Appendix J Public Information Plan

Rusty's Rental Cars 606 Okoma Dr. Omak, WA 98841	Daily Business 114 S Glover St. Twisp, WA 98856	Winthrop Chamber of Commerce 202 Hwy 20 Winthrop, WA 98862
Winthrop Motors 228 Riverside Avenue Winthrop, WA 98862	Mazama Store 50 Lost River Road Mazama, WA 98833	Aero-Methow Rescue Service Twisp, WA 98856
Quality Lube 427 S Glover Twisp, WA 98856	Two Rivers Café 253 Riverside Ave. Winthrop, WA 98862	
Ace Hardware 920 Hwy 20 Winthrop, WA 98862	Duck Brand Duck Brand Bldg Winthrop, WA 98862	
Sun Mountain Lodge PO 1000 Winthrop, WA 98862	Tenderfoot P.O. Box 9 Winthrop, WA 98862	
Freestone Inn 17798 Hwy 20 Winthrop, WA 98862	Three Fingered Jacks Saloon & Café 176 Riverside Ave. Winthrop, WA 98862	
Mazama Ranch House 42 Lost River Road Winthrop, WA 98862	Hometown Pizza 607 Canyon St. Twisp, WA 98856	
Mazama Country Inn 42 Lost River Road Winthrop, WA 98862	Boulder Creek Deli 100 Bridge Street Winthrop, WA 98862	
Early Winters Outfitters HCR 74, Box B 6 Mazama, WA 98833	Sheri's Sweet Shop 207 Riverside Ave. Winthrop, WA 98862	
Winthrop Red Apple Market 920 Hwy 20 Winthrop, WA 98862	Hanks Market P.O. Box 68 Twisp, WA 98856	

**Douglas-fir Tussock Moth Project
Okanogan and Wenatchee National Forests
Methow Valley Ranger District**

This Recreation Site is located within an area that is scheduled to be aeri-ally treated for an outbreak of Douglas-fir Tussock Moth.

TM-BioControl-1, an insecticide made from a natural virus of the tussock moth, will be applied using a helicopter.

Exposure to the tussock moth larvae and TM-BioControl-1 may each cause similar effects on humans. About one third of the people who come in contact with the hairs of tussock moth larvae (caterpillar) have an allergic reaction of skin, eye, and respiratory tract irritation. People who are sensitive or allergic to other insects tend to be more sensitive to the tussock moth larvae. These effects are not life threatening or debilitating and are reversible. First aid treatment includes flushing with a stream of water or washing thoroughly with soap and water.

Estimated time for treatment for this site is expected to be between _____ and _____

If you have questions about this project, call the project office at 509-996-2832 or 996-2816 in Winthrop, Washington

For more information: www.fs.fed.us/r6/nr/fid/dftmweb

Attention!

Due to the disturbance caused by the aerial application of TM-BioControl-1, the Methow Valley Ranger District has decided to temporarily waive the campground use fee during the time when helicopters will be spraying near this area. The tentative dates for this waiver period are June 27th to approximately July 12th. If treatment is completed before July 12th then the fee will be reinstated. The Douglas Fir Tussock Moth Spray Project apologizes for any inconvenience that the helicopters may cause by operating in this area between the hours of 4:30am and 8:30am.

Attention!

DOUGLAS-FIR TUSSOCK MOTH SPRAY PROJECT

Methow Valley Ranger District

Although this recreation site is located outside of the Douglas fir Tussock Moth treatment area, you may still see and/or hear helicopters and large tanker trucks that are part of the project. These helicopters are spraying a product called TM-BioControl-1. This product is an insecticide made from a naturally occurring virus specific only to the Tussock Moth.

Exposure to Tussock Moth larvae and TM-BioControl-1 may each cause similar effects on humans. About one third of the people who come in contact with the hairs of Tussock Moth larvae (caterpillar) have an allergic reaction of the skin, eye, and respiratory tract irritation. People who are sensitive or allergic to other insects tend to be more sensitive to the tussock larvae. These effects are not life threatening or debilitating and are reversible. First-aid treatment includes flushing with a stream of water or washing thoroughly with soap and water.

Aerial treatment of these adjacent areas will occur mainly between the hours of 4:30 am and 8:00 am. This is due to the weather conditions needed for TM-BioControl-1 to be most effective.

The Methow Valley Ranger District apologizes for any inconvenience or disturbance this may cause the public. If you have any questions about this project, call the project office at (509) 996-2832 or (509) 996-2816 in Winthrop, WA.

For more information: www.fs.fed.us/r6/nr/fid/dftmweb

Okanogan/Wenatchee National Forest



DOUGLAS-FIR TUSSOCK MOTH PROJECT

Methow Valley Ranger District, Okanogan and Wenatchee National Forests

- **Summer 2001:** When you visit some areas in the Methow Valley this summer you may notice an increase in insect activity. The Douglas-fir tussock moth population has been on the increase for the past few years and is expected to reach outbreak levels in the summer of 2001.
- The tussock moth is a native inhabitant of Northwest forests. Tussock moths damage Douglas-fir and true fir trees by eating their needles. The caterpillar, or larvae stage of the insect, does all the feeding; the moths do not feed. The larvae grow to about 1.25 inches in length and become very colorful.
- The project area includes about 30,000 acres of the Methow Valley Ranger District in the following areas: Mazama and Lost River, Highway 20 near Klipchuck and Early Winters Campgrounds, Wolf Creek Trailhead, and areas in the lower Chewuch River and Eightmile Creek.
- Aerial application of TM-BioControl-1 will be used to protect specific areas of concern from defoliation and mortality. Defoliation of trees in some areas could cause unacceptable impacts to fish and wildlife habitat, watershed, recreation and other resources.
- TM-BioControl-1 is an insecticide made from a natural virus of the tussock moth. Application of TM-BioControl-1 will occur only after sampling has confirmed the presence of treatable populations of tussock moth larvae that are in a stage of development most vulnerable to treatment.
- Spraying will be done by helicopter between 5 a.m. and 7 a.m., but may last longer if weather conditions permit. Areas to be treated will be determined 2 or 3 days prior to spraying. Notices will be posted at campgrounds and along roads and public contacts will be made daily within the treatment areas. The spraying should begin about mid-June and should be completed by mid-July. Insect monitoring crews will continue to work the rest of the summer.

For additional information on the Douglas-fir Tussock Moth Project:

- Visit the website: www.fs.fed.us/r6/nr/fid/dftmweb, or contact:
- Jim Archambeault, Project Information Officer or Wayne Kleckner, Project Director at 509-996-2832 or 996-2816 in Winthrop
- Or, call 996-4040 for a recorded message, updated daily, on that day's treatment areas where helicopter spraying will occur.

Okanogan and Wenatchee National Forests



215 Melody Lane
Wenatchee, WA 98801

Public Affairs Office:
(509) 662-4314; Fax (509) 664-2731

Visit our websites at www.fs.fed.us/r6/wenatchee
www.fs.fed.us/r6/okanogan

NEWS RELEASE

Date: April 20, 2001

Subject: **Methow Valley Spray Project Gets
Green Light**

Contact: John Newcom, (509) 997-2131

John Townsley, (509) 826-3275

A Forest Service spray project to head off a destructive tussock moth infestation in the Methow Valley has been given a green light based on scientific studies showing the outbreak will not collapse this year without help.

“Levels of a naturally occurring virus are too low for a tussock moth outbreak in the Methow Valley to collapse by itself this year,” said John Newcom, Methow Valley District Ranger. “We are proceeding with plans for a project to spray about 27,000 acres of national forest in June and July.”

An entomology laboratory in Vancouver, B.C. studied larvae hatched from tussock moth egg masses gathered in the Methow Valley last fall. Scientists determined that the virus level is too low for the insect population to collapse naturally this year. Widespread defoliation of fir trees is likely in affected areas of the Methow Valley without a spray project, Newcom said.

(MORE)

Green Light For Spray Project/ Page 2

Field surveys have shown an outbreak of tussock moth in Douglas-fir trees in the Early Winters, Eight Mile Creek, and Wolf Creek areas of the Methow Valley Ranger District. Tussock moth larvae have been found in the Twisp River drainage, but not in sufficient numbers to warrant spraying at this time, Newcom said.

The tussock moth is always present at low numbers in Douglas- fir forests, but populations occasionally explode with serious results, said John Townsley, silviculturist for the Okanogan and Wenatchee National Forests.

At the peak of an outbreak, millions of inch-long tussock moth caterpillars often strip the needles from firs, causing widespread defoliation. Trees may be killed in small groups or over several hundred acres at a time. The dead trees can eventually become fuel for wildfires...a major concern near rural communities.

Hairs from tussock moth caterpillars also cause allergic reactions for some human visitors to an outbreak area. Potential health impacts on forest visitors are one reason the Forest Service proposes to spray around recreation sites and in scenic areas.

“TM-BioControl spray is a natural virus toxic only to species of the tussock moth,” Townsley said. TM-BioControl was made from tussock moth larvae following an outbreak several years ago. About 40,000 acres were successfully sprayed with it in the Blue Mountains of northeastern Oregon last summer to stem a large outbreak.

Scientists first detected increases in tussock moth numbers in the Methow Valley in 1998. Using traps that catch adult moths, entomologists have developed an ‘early warning system’ that provides advance notice of an epidemic well before extensive tree defoliation is visible.

An Environmental Impact Statement (EIS) was developed in 1999 to consider the possibility of spray projects to respond to expected tussock moth outbreaks in eastern Oregon and Washington.

Based on the analysis, the Forest Service decided to concentrate spraying on areas where insects killing large numbers of trees could seriously damage important wildlife sites and

(MORE)

Green Light For Spray Project/ Page 2

recreation areas, increase forest fire hazard near rural residences, or create a public health risk for rural residents and forest visitors.

Spray will be applied from the air in June and early July when caterpillars are most vulnerable to the virus, Townsley said. Some defoliation still will occur, but most affected trees would be expected to survive in the sprayed area, he said.

The tussock moth is native to eastern Washington forests. Prior to European settlement periodic outbreaks probably killed small patches of fir trees, Townsley said.

However, since fire suppression began in the early 1900's, drier eastside forests have become crowded with trees. As a result, outbreaks have become more intense and more and more trees are killed.

Spraying is seen as a way to lessen the impacts of defoliation in areas of high importance. It may also buy time for the Forest Service to do under burning or thinning, where appropriate, to move to more widely spaced, healthier trees that are more resistant to insects and disease.

Most spraying will occur on federal lands. However, some private landowners who are concerned about tussock moth damage are working with Washington Department of Natural Resources in hopes of spraying susceptible trees on their lands.

Okanogan and Wenatchee National Forests



215 Melody Lane
Wenatchee, WA 98801

Public Affairs Office:
(509) 662-4314; Fax (509) 664-2731

Visit our websites at www.fs.fed.us/r6/wenatchee
www.fs.fed.us/r6/okanogan

**NEWS
RELEASE**

Date: May 24, 2001

Subject: OPEN HOUSE – Douglas Fir Tussock Moth Project

Contact: Jim Archambeault, Information Officer, or Wayne Kleckner, Project Director, at
509-996-2832 or 509-997-9738

The Douglas Fir Tussock Moth Spray Project will be hosting an open house for those interested in the project on Thursday, May 31, from 3 to 6 pm at the Winthrop Work Center.

“This will a great opportunity for local residents to visit with our staff and learn more about the project” said Dave Bridgewater, deputy project director, and one of the entomologists working on the project. “We’ll have staff there who can answer questions about the tussock moth, about the spraying for the insects, and the evaluation and monitoring we’ll be doing as the project proceeds. People will also be able to view maps and other information about the project”, Bridgewater said.

The project involves potential spraying of up to 30,000 acres of forested land in the upper Methow and Chewuch Rivers that are experiencing sub-outbreak and outbreak levels of Douglas Fir Tussock Moth.

The project offices are located in the basement of the Winthrop Forest Service building on the west side of Winthrop. Visitors should park in front of the building and enter the front door, then go down the stairs in the foyer to the project offices in the basement.

END

Okanogan and Wenatchee National Forests



215 Melody Lane
Wenatchee, WA 98801

Public Affairs Office:
(509) 662-4314; Fax (509) 664-2731

Visit our websites at www.fs.fed.us/r6/wenatchee
www.fs.fed.us/r6/okanogan

NEWS RELEASE

Date: May 29, 2001

Subject: EARLY HATCH MEANS SPRAYING MAY BEGIN— Douglas Fir Tussock Moth Project

Contact: Jim Archambeault, Information Officer, or Wayne Kleckner, Project Director, at
509-996-2832 or 509-997-9738

Recent warm temperatures and sunny days have accelerated the development of the Douglas-fir Tussock Moth egg hatch. As a result, spray operations in the upper Methow Valley could begin earlier than planned, possibly as early as Wednesday, June 6th.

“We started seeing egg masses hatch and begin to disperse at the lower elevations, starting last week”, said Connie Mehmel, project entomologist. Mehmel said that the egg hatch and dispersal of larvae generally means that the larvae will be in the second instar, or stage of development 14 to 18 days after that point. “That is the point in larval development that the larvae are most susceptible to the virus”, said Mehmel. Crews will continue to survey potential spray areas, and will be releasing areas for spraying as different elevations of the forest reach the proper condition for spraying.

Contract applicators will begin spraying the virus, TM-Biocontrol-1, with helicopters on or after June 6th. They will be operating from a helibase on private land, along State Hwy. 20 near the Mazama junction. Spray operations will occur only when temperature, wind and humidity are within certain parameters; those generally occur only early in the morning, usually between 5 and 8 am. There could be as many as three helicopters operating at once, depending on the number of areas to be sprayed each day.

While some people may experience allergic discomfort from the moth (a condition called Tussockosis), very few people should feel any discomfort from the spray, which contains only a small number of the moth hairs that cause the reaction. The Forest Service will be posting trailheads and campgrounds with the approximate time of spraying. Anyone who wants to know the general areas of spraying, so they may avoid them, can call 996-4040 and hear a message about that days activities. That message will be updated daily once spraying begins.

Project staff is available at 996-2832, 7 days a week between 7 am and 5 pm to answer questions about the project.

END

K. References

- Brookes, Martha H.; R. W. Stark; Robert W. Campbell, eds. 1978. *The Douglas-fir tussock moth: A synthesis*. Tech. Bull. 1585. Washington, D.C.: U.S. Department of Agriculture, Forest Service, Science and Education Agency, Douglas-fir Tussock Moth Research and Development Program. 331 p.
- Mason, R. R., 1979. *How to Sample Douglas-fir Tussock Moth Larvae*. U.S. Dept of Agriculture, Agric Handb. 547.
- Mason, R. R., D. W. Scott, H. G. Paul. 1993. Forecasting outbreaks of the Douglas-fir tussock moth from lower crown cocoon samples. Res. Pap. PNW-RP-460. Portland, OR: U. S. Department of Agriculture, Forest Service, and Pacific Northwest Research Station. 12 p.
- USDA Forest Service. 2000. *Douglas-fir Tussock Moth: Final Environmental Impact Statement*. Portland, OR: U.S. Department of Agriculture, Forest Service, Pacific Northwest Region. Indeterminate pagination.
- Abbott, W. S. 1925. *A method of computing the effectiveness of an insecticide*. J. Econ. Entomol. 18: 265-267.
- Dahlsten, D. L.; R. F. Luck; E. I. Schlinger; J. M. Wenz; W. A. Copper. 1977. *Parasitoids and predators of the Douglas-fir tussock moth, Orgyia pseudotsugata (Lepidoptera: Lymantriidae), in low to moderate populations in central California*. Can. Ent. 109: 727-746.
- Martignoni, Mauro E. 1999. History of TM BioControl-1: the first registered virus-based Product for control of a forest insect. American Entomologist 45(1): 30-37.
- Mason, Richard R. 1981. *Numerical analysis of the causes of population collapse in a severe outbreak of the Douglas-fir tussock moth*. Ann. Entomol. Soc. Am. 74(1): 51-57.
- Poinar, Jr., George O.; Gerard M. Thomas. 1978. *Diagnostic manual for the identification of insect pathogens*. Plenum Press, New York. 218 p.
- Sikorowski, P.; J. R. Broome; G. L. Andrews. 1971. Simple methods for detection of cytoplasmic polyhedrosis virus in *Heliothis virescens*. J. Invertebr. Pathol. 17: 451-542.
- Thompson, Clarence G.; Linda J. Peterson. 1978. Rearing the Douglas-fir tussock moth. Agriculture Handbook No. 520. Washington, DC: U. S. Department of Agriculture, Combined Forest Pest Research and Development Program. 17 p.
- Torgersen, Torolf R. 1977. Identification of parasites of the Douglas-fir tussock moth, based on adults, cocoons, and puparia. Res. Pap. PNW-215. Portland, OR: U. S. Department of Agriculture, Forest Service, Pacific Northwest Forest and Range Experiment Station. 28 p.
- Torgersen, Torolf R. 1981. Parasite records for the Douglas-fir tussock moth. Gen. Tech. Rep. PNW-123. Portland, OR: U.S. Department of Agriculture, Forest Service, Pacific Northwest Forest and Range Experiment Station. 38 p.
- Torgersen, Torolf R.; Donald L. Dahlsten. 1978. Natural Mortality. In Brookes, Martha H.; R. W. Stark; Robert W. Campbell, eds. *The Douglas-fir tussock moth: A synthesis*. Technical Bulletin 1585. Washington, DC: U. S. Department of Agriculture, Forest Service, Science and Education Agency, Douglas-fir Tussock Moth Research and Development Program. Pp. 47-53..50
- 3
- Emmingham, W.H., and R.H. Waring. 1973. Conifer growth under different light environments in the Siskiyou Mountains of Southwestern Oregon. Northwest Sci. 47(2):88-99.
- SAS Institute. 1986. SAS/STAT User's Guide, Release 6.03 Ed. Cary, NC: SAS Institute Press.
- Zar, J. H. 1984. Biostatistical analysis. Englewood Cliffs, NJ: Prentice-Hall, 718 pp.