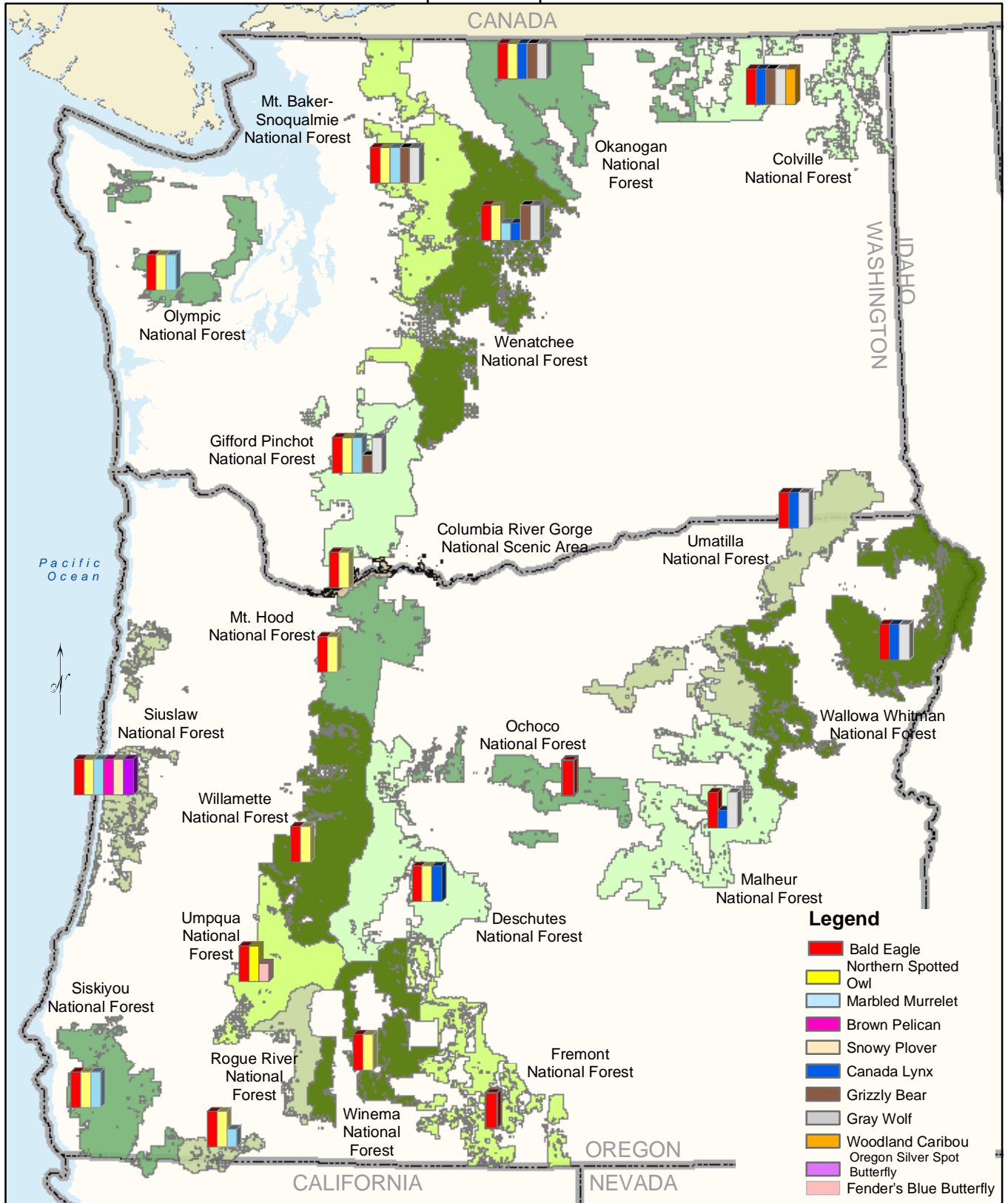


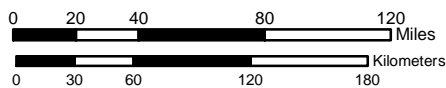
# Figure 1 Federally Listed Terrestrial Wildlife Species Occurrence

Full bars represent documented occurrence.

Half bars represent suspected occurrence.



Invasive Plants EIS Project  
 USDA Forest Service  
 PO Box 3623  
 Portland, OR 97208



Albers Equal Area Projection centered on 120 degrees 30 minutes west  
 Standard parallels: 43 degrees 10 minutes north and 50 minutes north.

No warranty is made by the US Forest Service as to the accuracy, reliability, or completeness of these data for individual or aggregate use with other data. Original data were compiled from various sources. This information may not meet National Map Accuracy Standards. This product was developed through digital means and may be updated without notification.