
RICHFIELD INTERAGENCY FIRE CENTER

2011 ANNUAL FIRE REPORT

US Department of Agriculture

U.S. Forest Service

Fishlake National Forest

U.S. Department of the Interior

Bureau of Land Management

Color Country District, Richfield Field Office

West Desert District, Fillmore Field Office

Bureau of Indian Affairs

Southern Paiute Field Station

National Park Service

Capitol Reef

U.S. Fish and Wildlife Service

Fish Springs National Wildlife Refuge

State of Utah

Department of Forestry, Fire & State Lands

Central Area Office



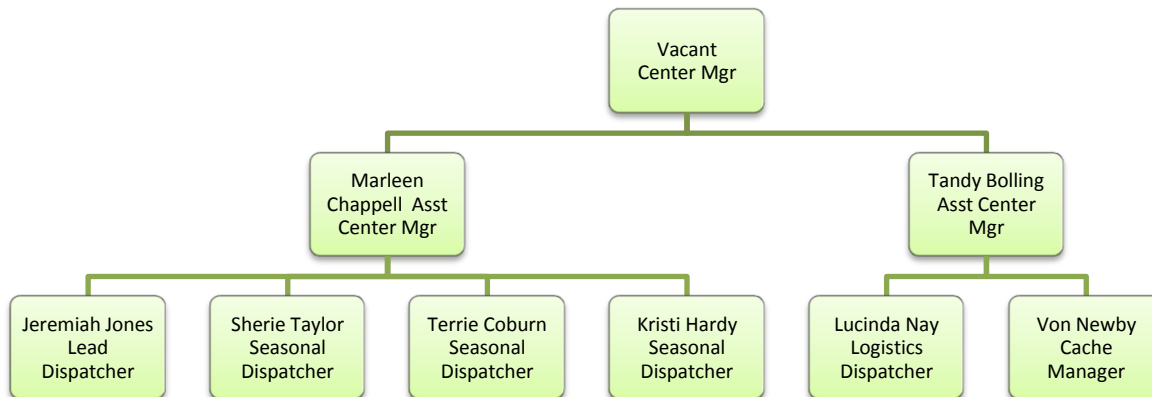
INTRODUCTION

The Richfield Interagency Fire Center (RIFC) is located in central Utah. The response area of RIFC consists of over 11 million acres including the Fishlake National Forest, BLM Fillmore Field Office, BLM Richfield Field Office, Capitol Reef National Park, Fish Springs National Wildlife Refuge, Central Area of the Utah Division of Forestry, Fire and State Lands, and the BIA Southern Piute Field Station. Eight counties are included within the jurisdiction boundaries: Juab, Millard, Sevier, Sanpete, Piute, Wayne, Garfield and Beaver. Interstate highways I-15 and I-70 transect through the area as well as major highways. The terrain includes the Great Basin Desert, the Colorado Plateau, fertile valleys, and high mountain ecosystems. Elevations range from approximately 4,000 to over 12,000 feet.

Listed below is the total acreage responsibility of Richfield Interagency Fire Center and each agency's ownership acres.

	BLM	Forest Service	National Park	Fish & Wildlife	State	BIA	DOD
Acres	6,577,159	1, 835, 648	244, 802	17, 975	2, 775, 290	2, 741	961
Richfield Dispatch Protection Responsibility Acres							11, 454, 576

RICHFIELD INTERAGENCY DISPATCH CENTER ORGANIZATION CHART



The Richfield Dispatch operates with nine personnel: one center manager, two assistant center managers, one logistics dispatcher, four initial attack dispatchers and one cache manager. While, both assistant center manager positions were filled this year in April, the center manager position became vacant in October.

Besides normal dispatch duties, the staff also completed other assignments which include:

- Marleen Chappell: Lead Instructor for D110 course
- Terrie Coburn: Fire Assignment to Texas
- Kristi Hardy: Fire Assignment to Color Country
- Sherie Taylor: Assisted the Utah Wildfire Academy with PIO duties
- Von Newby: Assisted the Utah Wildfire Academy with logistic duties

HIGHLIGHTS

We ended the season with 171 fires, 81 false alarms and 5 abandoned campfires for a total of 6,233 acres.

The first lightning caused fire started on March 3, 2011 on state land in Millard County and burned a tenth of an acre. The largest lightning caused fire occurred on September 1st on state land with 2,192 acres. The last lightning caused fire for the season occurred on October 5th on the Fishlake Forest, Richfield Ranger District and was a tenth of an acre. Between August 18th and August 24th we had a total of 40 responses to fires.

The number of fires that occurred and acres burned in 2011 were below the 10 year average. As indicated on the table below, the 10 year average is 208 fires and 50,276 acres.

YEAR	RID FIRE	RID ACRES	FIF FIRE	FIF ACRES	SCS FIRE	SCS ACRES	FSR Fire	FSR Acres	MLF1 Fire ***	MLF1 Acres ***	TOTAL FIRE	TOTAL ACRES
2002	29	426	64	3,004	85	997	0	0	5	0	183	4,427
2003	99	36,615	71	585	115	6,714	0	0	22	14	307	43,928
2004	75	907	53	250	87	3,062	0	0	13	4,722	228	8,941
2005	79	11,416	74	1,953	121	9,476	0	0	N/A	N/A	274	22,845
2006	107	34,290	76	30,692	119	19,856	0	0	N/A	N/A	302	84,838
2007	49	198,045*	31	494	99	76,535**	0	0	N/A	N/A	179	275,074
2008	31	934	23	327	66	422	0	0	N/A	N/A	120	1,683
2009	39	588	35	7,265	100	1,687	0	0	N/A	N/A	174	9,540
2010	38	67	39	44,937	60	242	0	0	N/A	N/A	137	45,246
2011	60	4,104	36	239	74	1,864	1	26	N/A	N/A	171	6,233
10 YR AVG 2002 - 2011	61	28,739	50	8,980	93	12,086	0	3	4	474	208	50,276

Acres have been rounded to the fullest number.

RID = BLM, Richfield and Fillmore Field Offices, FIF = Fishlake National Forest, SCS = Central Area – Utah Division of Forestry, Fire, & State Lands (Includes private lands), FSR = Fish Springs Refuge, MLF1 = Sanpete Ranger District on the Manti-Lasal National Forest

*Includes acres of Milford Flat fire that burned within RIFC boundary.

** Includes acres of Salt Creek fire that burned within RIFC boundary.

*** Sanpete Ranger District of the Manti-Lasal National Forest was reassigned to the Moab Interagency Fire Center in the spring of 2005. All statistics from 2005 on are kept by MFC.

The Fishlake Regulars were able to take three assignments this year, the first two assignments were to the Southwest and the third assignment was to Color Country. Central Utah was able to put together a second crew, Central Utah Regulars who took one assignment to the Rocky Mountain area where they were reassigned to the Southwest.

In 2011, the BLM staffed a total of 10 engines and 2 tactical water tenders. The Fishlake Forest staffed six engines and two wildfire modules. Richfield Interagency Fire Center sent a total of twelve engines off unit during the year. Below shows the off-unit engine activity during 2011.

Agency	BLM	USFS	FFSL
Total Engines/Water Tenders	12	6	4
Date of First Off-Unit Assignment	4/8/2011	5/8/2011	6/6/2011
Total Off Unit Assignments	4	6	2

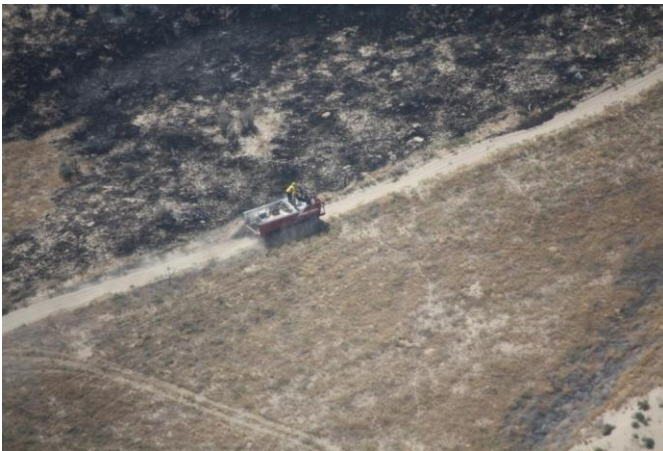
Richfield Interagency Fire Center had 463 incidents in 2011, below is the breakdown of the workload.

Incident Type	Number of Incidents
Search & Rescues	2
Wildfire (fires & smoke checks)	284
Wildfire Assists	13
Aircraft (flight follows)	71
Law Enforcement	57
Prescribed Fire	23
Medical Aid	3
Miscellaneous	10

In Central Utah, the BLM is the employing agency for ADs. During 2011 the BLM employed a total of 87 ADs during the fire season (reemployment is counted towards employment). Two Central Utah campcrews, which are made up of ADs took one assignment each to the Southwest.

The Richfield Interagency Fire Center did not open Expanded Dispatch or host any Type 1 or 2 Incident Management Teams during the 2011 fire season.

The dispatch center and the fire organization faced several challenges due to major organizational changes this year. However, the year was safe and successful.



The Thing, courtesy of Jeff Kline



Courtesy of Wess Freeborn

RIFC FIRE ACTIVITY STATISTICS

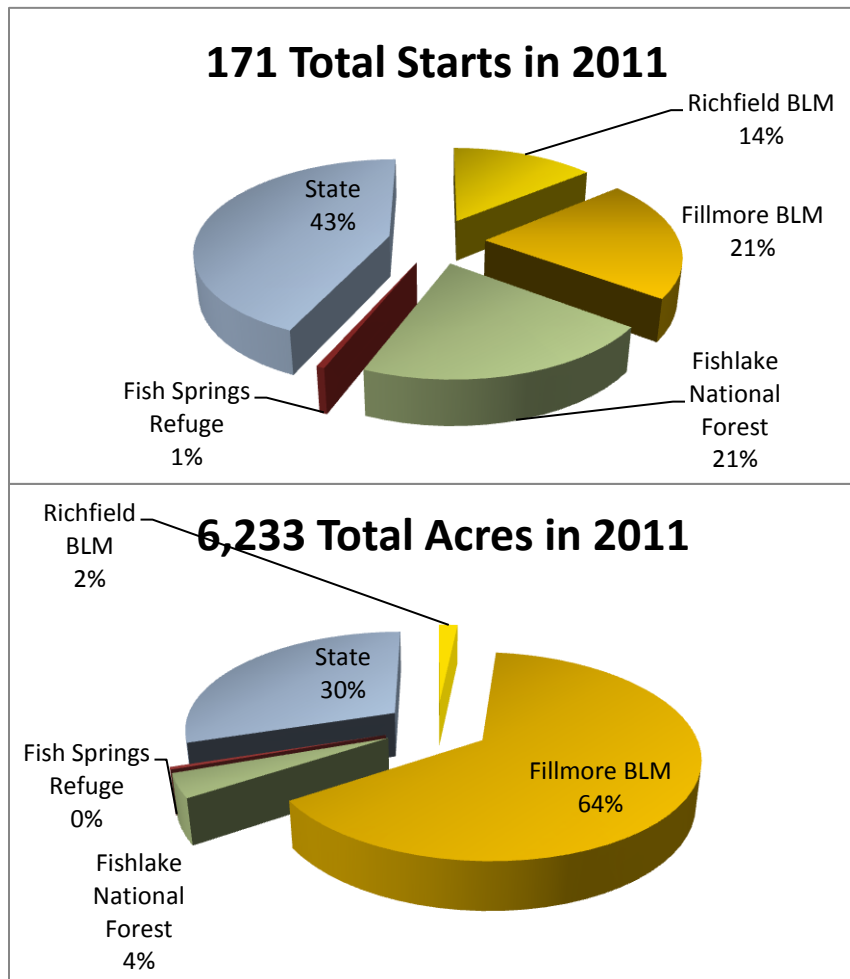
The five year average of lightning caused fires is 96 fires and 63,733 acres. The 2011 season was a below average year for acres burnt in the Central Utah area, while the number of fires were above the average. Lightning caused fires accounted for 72 percent of the fires and 87 percent of the total acres.

The five year average of human caused fires is 65 fires and 4,264 acres. Human caused fires and acres were below the five year average for 2011. The total number of human caused fires for 2011 accounted for 28 percent of the fires and 13 percent of the acres.

Below is the 2011 breakdown of activity by ownership for the number of fires and acres burned.

Ownership	Lightning Fires	Lightning Acres	Human Fires	Human Acres	Total Fires	Total Acres
RID	46	3608.80	14	494.80	60	4103.60
FIF	33	233.70	3	5	36	238.70
SCS	43	1571.65	31	293.15	74	1864.80
FSR	1	26	0	0	1	26
CRP	0	0	0	0	0	0
SPA	0	0	0	0	0	0
Totals	123	5439.70	48	793.1	171	6233.10

RID = Richfield Field Office & Fillmore Field Office, FIF = Fishlake National Forest, SCS = Utah Department of Forestry, Fire and State Lands, FSR = Fish Springs National Wildlife Refuge, CRP = Capital Reef National Park, SPA = BIA Southern Paiute Agency



Below depicts the fires and acres by each Forest Service District, BLM Field Office, and Counties within the Division of Forestry Fire and State Lands (FFSL) jurisdiction.

Fires and Acres by Ranger District

Ranger District	Lightning Fires	Lightning Acres	Human Fires	Human Acres	Total Fires	Total Acres
Fillmore	11	231.5	1	.10	12	231.60
Beaver	2	.20	1	4.80	3	5.0
Fremont River	3	.30	0	0	3	.30
Richfield	17	1.70	1	.10	18	1.80
Forest Total	33	233.70	3	5	36	238.70

Fires and Acres by Field Office

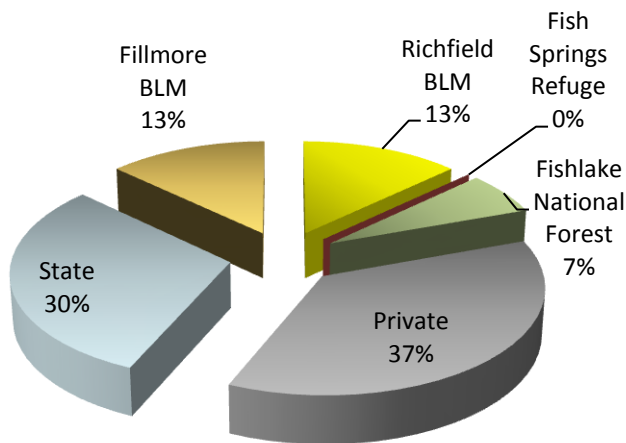
Field Office	Lightning Fires	Lightning Acres	Human Fires	Human Acres	Total Fires	Total Acres
Fillmore Field Office	28	3558.0	8	439.80	36	3997.80
Richfield Field Office	18	50.80	6	55.00	24	105.80
BLM Total	46	3608.80	14	494.80	60	4103.60

Fires and Acres by FFSL County

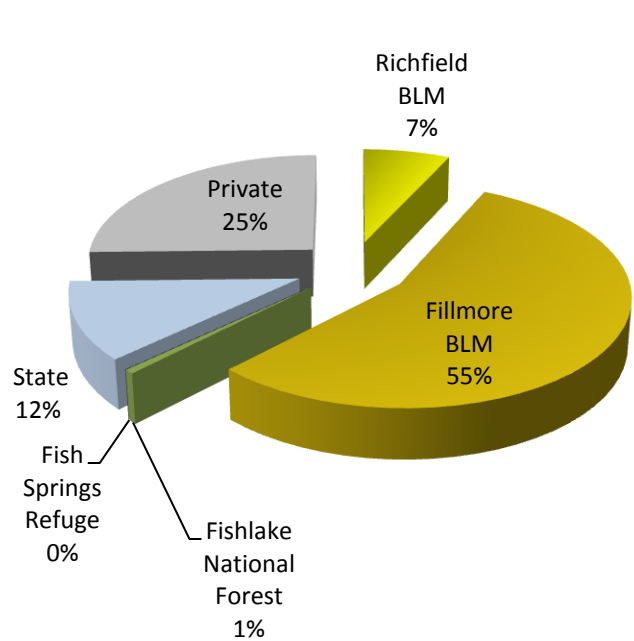
Area	Lightning Fires	Lightning Acres	Human Fires	Human Acres	Total Fires	Total Acres
Juab County, State	3	103.20	6	11.40	9	114.60
Millard County, State	5	25.80	4	38.50	9	64.30
Piute County, State	0	0	0	0	0	0
Sanpete County, State	2	.20	1	.10	3	.30
Sevier County, State	1	.20	3	42.30	4	42.50
Wayne County, State	0	0	0	0	0	0
State Total	11	129.40	14	92.30	25	221.70
Juab County, Private	9	1331.95	0	0	9	1331.95
Millard County, Private	11	95.90	4	188.10	15	284
Piute Country, Private	0	0	1	.50	1	.50
Sanpete County, Private	10	7.90	7	3.75	17	11.65
Sevier County, Private	2	6.50	5	8.50	7	15.0
Wayne County, Private	0	0	0	0	0	0
Private Total	32	1442.25	17	200.85	49	1643.10
FFSL Total	43	1571.65	31	293.15	74	1864.80

The graphs below depict the percentage of fire and acres for each agency for human and natural caused fires.

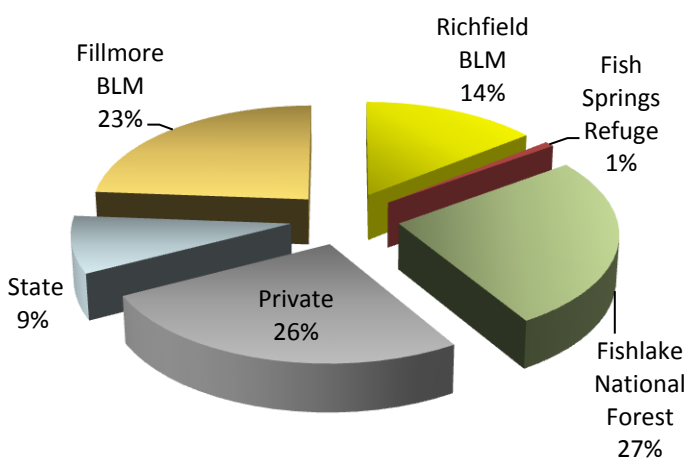
48 Human Fires in 2011



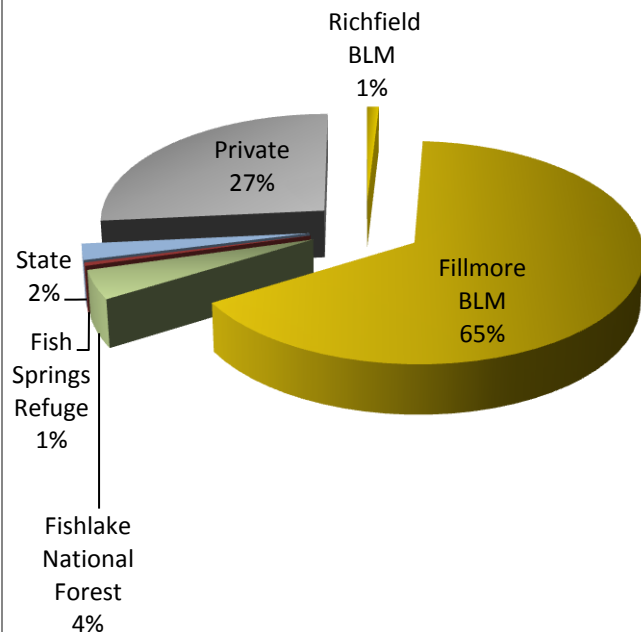
793 Human Acres in 2011



123 Natural Starts in 2011

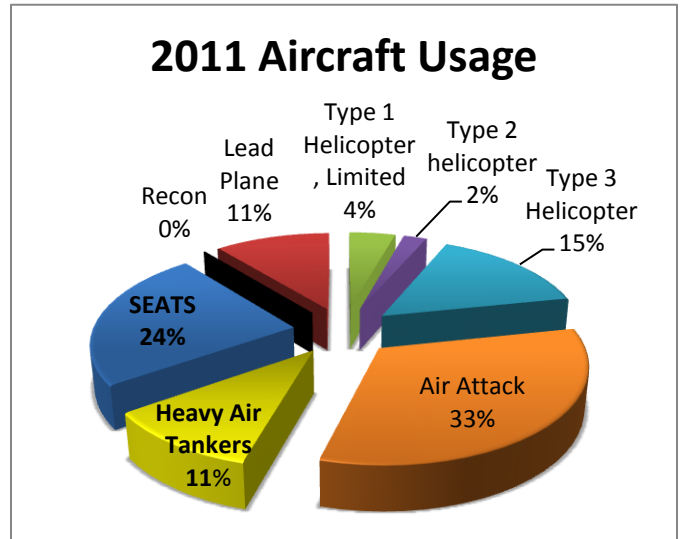
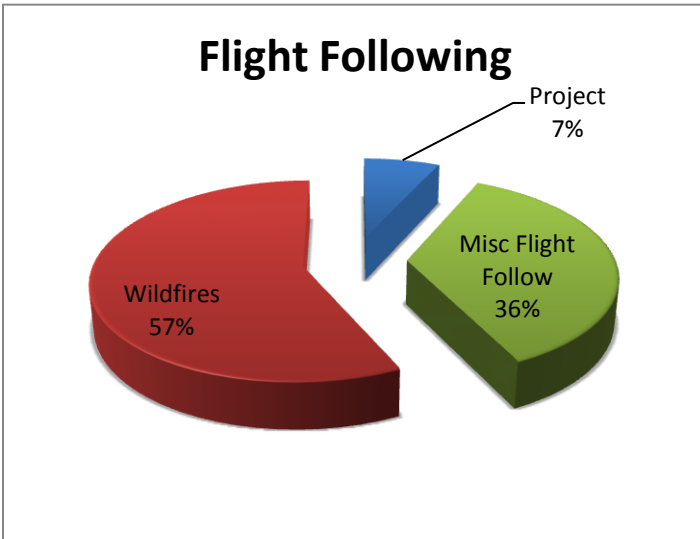


5440 Natural Acres in 2011



AVIATION

Central Utah does not have exclusive use contracts for helicopters, air-attack or single engine air tankers. The two Call When Needed SEAT Bases in Fillmore and Nephi were not used during the season. Below is a summary of flight hours and aircraft usage within the Richfield Interagency Fire Center’s zone of coverage.



Fire	Aircraft	Total Flight Time	Total Retardant Gallons	Total Water Gallons	Total Cargo Pounds	Total PAX Transported
Wood Canyon	SEATS	5.33	3,050			
	Air Tanker	1.53	2,082			
	Fixed Wing	6.42				
Long Ridge	SEATS	8.73	6000			
GAP	SEAT	12.29	5,875			
	Air Tanker	5.51	5,968			
	Helicopter	18.9		62,400	8,420	16



Gap fire, courtesy of Jeff Kline

LARGE FIRE SUMMARY

(FS 100 acres or greater; BLM 300 acres or greater)

We had six large fires for a total of 5,058 acres. Our season of large fire activity started late, the first large fire started August 11th. Of the six fires only Wood Canyon, Long Ridge and Gap were managed by local Type 3 Incident Management Organizations.

NAME	Unit Identifier	START Date	CONTROL DATE	TOTAL ACRES	BLM Acres	FS Acres	State/PVT Acres	Comments
GAP	UT-SCS	8/11	8/16	411	245		166	Human Type 3
TWIN	UT-RID	8/15	8/20	348	348		348	Lightning
WEST SAHARA	UT-RID	8/15	8/21	1056	1056		1056	Lightning
LONG RIDGE	UT-RID	8/21	9/12	886	886		886	Lightning Type 3
WOOD CANYON	UT-FIF	8/21	9/6	165		165	165	Lightning Type 3
JERICO	UT-SCS	9/1	9/13	2192	770		1422	Lightning

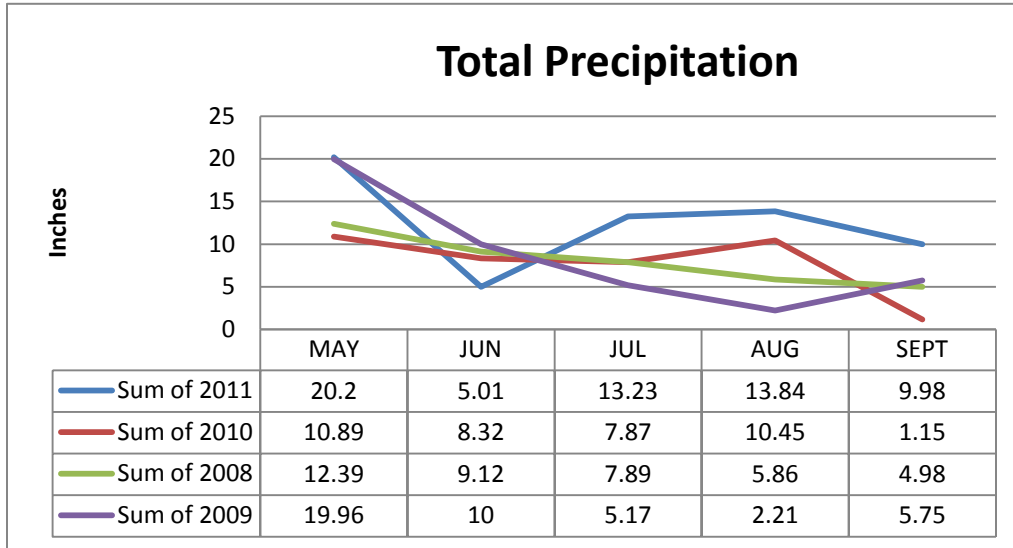
WEATHER SUMMARY

The outlook for 2011 was for normal fire potential due to above normal snowpack for the high country and a cool, wet early spring, with low carryover fuel loadings to the lower elevations. At higher elevations, the slowly dissipating snowpack delayed fuel drying. While the heavy early winter snows over the higher elevations largely compacted carryover cured grasses, reducing potential fuel loadings for the spring.

The Tule Valley RAWS recorded the first temperature over 100 degrees for the season on July 3rd, it was also the only station to recorded temperatures over 100 degrees. In 2011 we had only 4 days at or over 100 degrees; the last was recorded on August 27th at 102 degrees.

2011 Mean Maximum Temperature					
RAWS Station	May	June	July	August	September
421501 – Sevier Reservoir	66.5	82.3	92.0	93.6	85.6
421502 – Mud Springs	61.9	78.1	89.3	91.2	82.0
421805 – Black Cedar	63.7	78.6	88.2	90.3	80.2
421806 – Tule Valley	65.6	81.9	92.5	95.3	85.0
421807 – Horse Hollow	63.3	78.6	87.7	90.4	80.7
421904 – Signal Peak	54.6	70.9	78.3	80.2	70.2
421905 – Lost Creek	57.6	74.1	80.9	82.7	74.0
422610 – Larb Hollow	58.2	73.2	77.8	79.3	69.2
422611 – Henry Mountain	56.0	70.6	77.4	78.9	68.2
Average Monthly Temp	60.8	76.5	85.0	86.9	77.2

In general, 2011 was cooler and wetter than previous years. As depicted on the graph below, July, August and September were above the monthly rainfall than the previous years.



2011 Annual Precipitation for RAWS

RAWS Station	May	June	July	August	September	Total
421501 - Sevier Res	1.57	0.51	0.32	0.96	0.44	3.8
421502 - Mud Springs	2.66	0.4	0.6	0.66	0.43	4.75
421805 - Black Cedar	0.22	1.26	0.75	0.69	1.3	4.22
421806 - Tule Valley	4.67	0.21	1.73	1.19	0.58	8.38
421807 - Horse Hollow	4.98	0.91	1.08	0.49	1.13	8.59
421904 - Signal Peak	2.13	0.4	2.6	1.2	1.07	7.4
421905 - Lost Creek	2.28	0.77	1.53	1.99	0.99	7.56
422610 - Larb Hollow	0.95	0.54	4.06	6.19	2.68	14.42
422611 - Henry Mtn.	0.74	0.01	0.56	0.47	1.36	3.14
Total	20.2	5.01	13.23	13.84	9.98	62.26

FIRE DANGER RATING SYSTEM

Central Utah has three Fire Danger Rating Areas; Central Utah West Desert, Central Utah Mountains and Hanksville Area.

The Central Utah West Desert encompasses 6,793,009 acres and includes all areas in Central Utah west of I-15 including the Canyon Mountains, the House Range, the Confusions, the Crickets, the Conger Range and Little Sahara Recreation area.

The Central Utah Mountain is east of I-15, spread across the mountains of Central Utah. It includes the Pahvant Range, the Tushars, Monroe Mountain, southern Wasatch Plateau, Thousand Lake and Boulder Plateaus, and Parker Mountain. It encompasses approximately 2,675,483 acres.

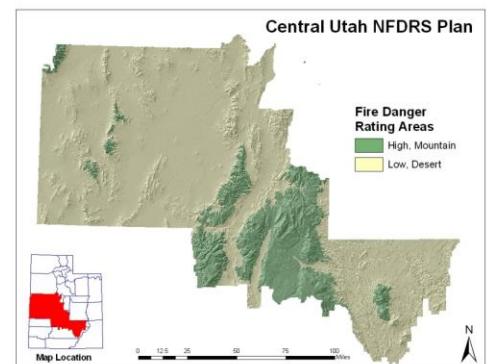
The Hanksville Area begins on the western edge of Capitol Reef National Park, south of Emery County line then east to the Colorado River, including the Hanksville Desert and the Henry Mountains. It encompasses 1,856,630 acres.

Each FDRA uses Remote Automated Weather Stations (RAWS) to obtain the weather information needed to produce fire danger outputs. Each area uses data compiled with the Energy Release Component (ERC) to determine the Adjective Fire Danger Rating. To determine the Dispatch Level the Burning Index (BI) is used for each area.

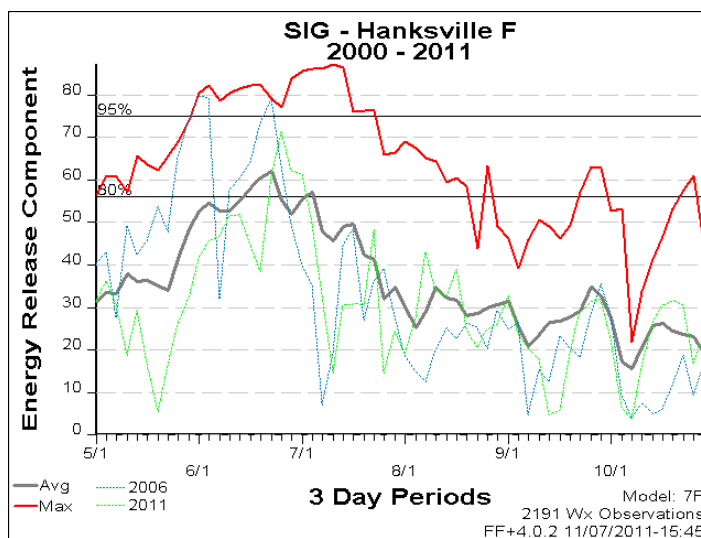
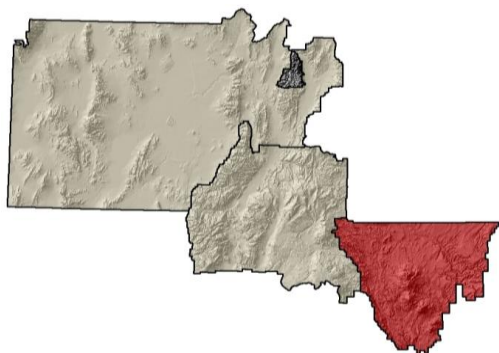
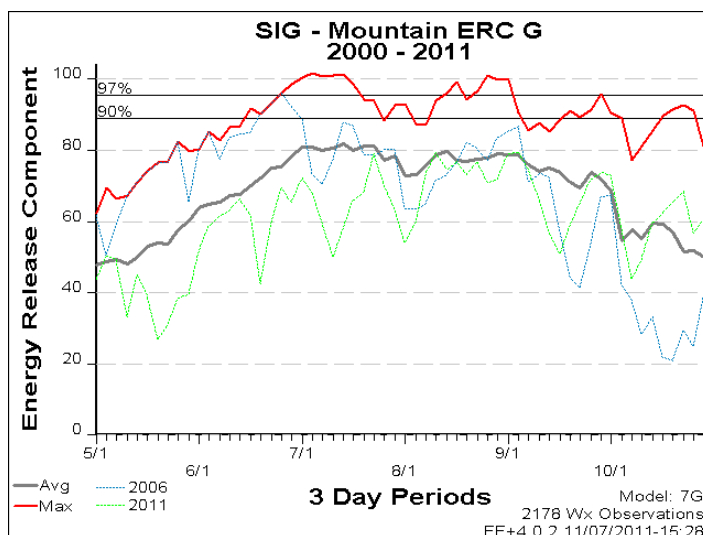
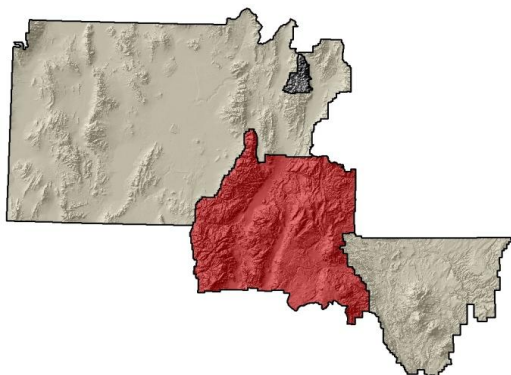
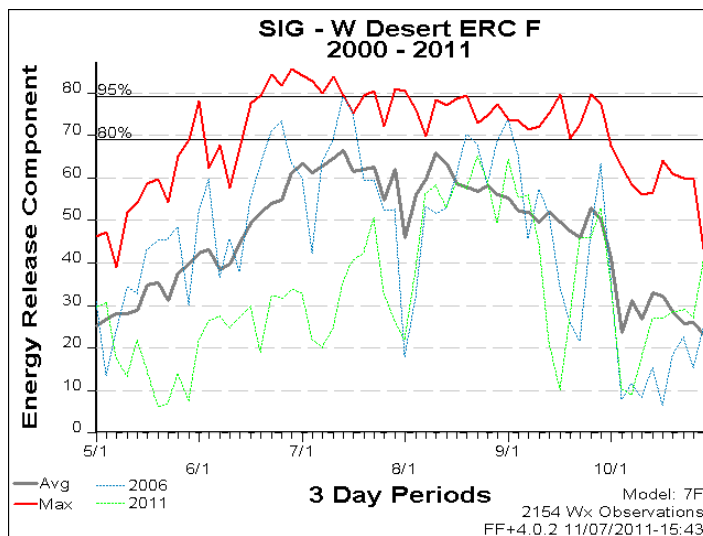
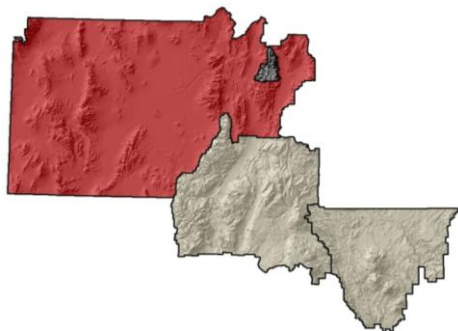
Below is a list of RAWS used for each FDRA.

STATION NAME	STATION ID	LOCATION	ELEVATION
WEST DESERT			
TULE VALLEY	421806	7 MI NW OF ANTELOPE SPRING RESERVOIR	5200
MOUNTAIN			
LOST CREEK	421905	7 MI NE OF GLENWOOD	7490
BLACK CEDAR	421805	6 MI NE OF FILLMORE	6480
HANKSVILLE			
KANE GULCH*	422712	KANE GULCH RANGER STATION	6500

**Kane Gulch is owned by the Moab Field Office, but is used for the Hanksville Area data because the Henry Mountain RAWS does not have a long enough weather record.*



Below are outputs produced from each of the FDRA within our area from May 1st through October 31st. These charts include the historical data, the current year highlighted, a previous large fire year, and the critical percentile that has been identified for each area.

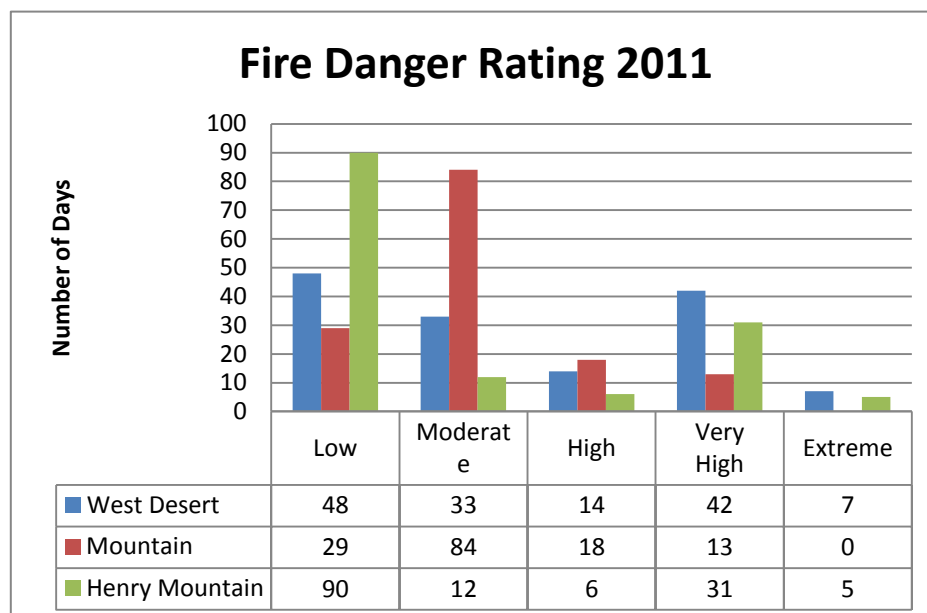


CENTRAL UTAH PREPAREDNESS LEVEL 2011

The table below indicates the number of days at each fire danger level for the FDRAs from May 10 through September 30 (144 days).

<i>PREPAREDNESS LEVEL</i>	<i>DAYS</i>
1	101
2	28
3	13
4	2
5	0

<i>FIRE DANGER RATING LEVEL</i>	<i>WEST DESERT</i>		<i>MOUNTAIN</i>		<i>HENRY MOUNTAIN</i>	
	<i>DAYS</i>	<i>%</i>	<i>DAYS</i>	<i>%</i>	<i>DAYS</i>	<i>%</i>
LOW	48	33%	29	20%	90	63%
MODERATE	33	23%	84	58%	12	8%
HIGH	14	10%	18	13%	6	4%
VERY HIGH	42	29%	13	9%	31	22%
EXTREME	7	5%	0	0%	5	3%
<i>DISPATCH LEVEL</i>	<i>WEST DESERT</i>		<i>MOUNTAIN</i>		<i>HENRY MOUNTAIN</i>	
	<i>DAYS</i>	<i>%</i>	<i>DAYS</i>	<i>%</i>	<i>DAYS</i>	<i>%</i>
LOW	58	40%	56	39%	79	55%
MODERATE	46	32%	42	29%	47	33%
HIGH	19	13%	27	19%	13	9%
EXTREME	21	15%	19	13%	5	3%



LOCAL FIRE DEPARTMENTS

In 2011, the 40 fire departments of Central Utah were dispatched 84 times.

<i>Volunteer Fire Departments</i>	<i>Assist to Private</i>	<i>Assist to State</i>	<i>Assist to USFS</i>	<i>Assist to BLM</i>	<i>Total Assists</i>
<i>Aurora</i>	0	0	0	0	0
<i>Bicknell</i>	0	0	0	0	0
<i>Elsinore</i>	0	1	0	0	1
<i>Koosharem</i>	0	0	0	0	0
<i>Monroe</i>	0	0	2	0	2
<i>Richfield</i>	0	5	0	0	5
<i>Salina</i>	0	0	0	0	0
<i>Ephraim</i>	0	0	0	0	0
<i>Fairview</i>	1	0	0	0	1
<i>Fountain Green</i>	0	0	0	0	0
<i>Gunnison</i>	0	1	0	4	5
<i>Indianola</i>	2	1	0	0	3
<i>Moroni</i>	0	0	0	0	0
<i>Manti</i>	1	2	0	0	3
<i>Mt.Pleasant</i>	3	0	1	0	4
<i>Spring City</i>	2	0	0	0	2
<i>Sterling</i>	1	0	1	0	2
<i>Eureka</i>	0	1	0	4	5
<i>Levan</i>	0	0	0	0	0
<i>Mona</i>	1	5	0	1	7
<i>Nephi</i>	3	3	0	2	8
<i>Rocky Ridge</i>	0	2	0	4	6
<i>Delta</i>	0	3	1	1	5
<i>Fillmore</i>	5	0	0	0	5
<i>Desert Mountain</i>	0	0	0	0	0
<i>Garrison</i>	0	1	0	0	1
<i>Eskdale</i>	0	0	0	0	0
<i>Hinkley</i>	0	0	0	0	0
<i>Holden</i>	5	0	0	1	6
<i>Kanosh</i>	0	1	0	1	2
<i>Leamington</i>	2	0	0	0	2
<i>Lynndyl</i>	0	0	0	0	0
<i>Meadow</i>	0	1	0	0	1
<i>Oak City</i>	2	2	0	4	8
<i>Scipio</i>	0	0	0	0	0
<i>Wales</i>	0	0	0	0	0
<i>Loa</i>	0	0	0	0	0
<i>Lyman</i>	0	0	0	0	0
<i>Teasdale</i>	0	0	0	0	0
<i>Torrey</i>	0	0	0	0	0
Totals	28	29	5	22	84

FUELS ACCOMPLISHMENTS

Prescribed fire activity occurred 34 days during the spring, fall and into the winter. The agencies accomplished 16 prescribed fire projects for a total of 3130 acres during 2011.

Agency	Fires	Acres
Fishlake N.F.	9	1600.5
Richfield BLM (Color Country)	0	0
Fillmore BLM (West Desert)	1	555
Fish Springs Refuge	1	800
South Central State	5	174.5
Total	16	3130

In addition to the prescribed fire accomplishment, the fuels programs accomplished many other fuel treatments projects.

The Richfield BLM completed 6 mechanical treatments totaling 9550 acres and 5 archaeology contracts for 8,300 acres. The Fillmore BLM completed one mechanical treatment totaling 480 acres and 44 acres of the Valley Mountain West Project burned in the Gap fire.

The Fishlake National Forest completed 611 WUI acres and 2,515 non-WUI acres of mechanical treatments. Below is a breakdown of accomplishments by district.

District	Acres	Treatment
D1 – Fillmore	200 (WUI)	Mechanical
	595 (non-WUI)	Mechanical
D2 – Fremont River	300 (WUI)	Mechanical
	350 (non-WUI)	Mechanical
	839	Prescribed Fire
D3 – Beaver	111 (WUI)	Mechanical
	1036 (non-WUI)	Mechanical
	450	Prescribed Fire
D4 – Richfield	534 (non-WUI)	Mechanical
	311.50	Prescribed Fire



Brindley Dairy RX, courtesy of Wess Freeborn

FUEL MOISTURE

Within the boundaries of the Fishlake National Forest, live and dead fuel samples are collected bi-weekly from three permanent RAWS locations: Black Cedar (D1), Signal Peak (D4), and Larb Hollow (D2). Sampling generally begins in late April and concludes in early October.

As a result of wet winter, cool spring and frequent precipitation events throughout the summers, live and dead fuel moisture were average to above average throughout the season. The fine fuel loading was above average throughout the forest. The high fine fuel loading was a concern to fire managers. Due to the cool summer and precipitation events the fine fuels cured late in the season and contributed little to fire spread.

The BLM collects fuel samples bi-weekly from six permanent RAWS locations: Sevier Reservoir, Mud Springs, Tule Valley, Horse Hollow, Lost Creek, and Henry Mountain.

Fuel moisture sampling data for the Fishlake National Forest and the Bureau of Land Management is available at <http://gacc.nifc.gov/egbc/fuels.php>

STATION NAME	STATION ID	LOCATION	ELEVATION	AGENCY
SEVIER RESERVOIR	421501	5 MI OF S OF SEVIER RESERVOIR	5329	BLM
MUD SPRINGS	421502	6 MI N OF LITTLE SAHARA	5902	BLM
BLACK CEDAR	421805	6 MI NE OF FILLMORE	6480	FS
TULE VALLEY	421806	7 MI NW OF ANTELOPE SPRING RESERVOIR	5200	BLM
HORSE HOLLOW	421807	6 MI NW OF COVE FORT	6010	BLM
SIGNAL PEAK	421904	3 MI NE OF MONROE	8792	FS
LOST CREEK	421905	7 MI NE OF GLENWOOD	7490	BLM
LARB HOLLOW	421905	7 MI NW OF BROWN RESERVOIR	8490	FS
HENRY MOUNTAIN	422611	22 MI SW OF HANKSVILLE	8294	BLM



Courtesy of Fred Johnson

LOGISTICAL ACTIVITY

Richfield Interagency Fire Center mobilizes 256 overhead personnel, 1 Type 2IA Crew, 4 camp crews, 22 Engines/Water Tenders, and 25 misc I-BPA equipment. In addition, approximately 75 camp crew members were signed up as ADs this year (*these ADs are not issued Qualification Cards therefore they are not counted in the AD section of the below chart*).

Agency	UT-FIF	UT-RID	UT-SCS	UT-CRP	UT-FSR	UT-SPA
# Of Personnel	144	69	20	3	0	0
AD	0	20	0	0	0	0
Type 2IA Crew	1	0	0	0	0	0
Camp Crew		4				
Engines/Water Tenders	6	12	4	0	0	0
I-BPA	9	16	0	0	0	0

The Richfield Interagency Fire Center plays a vital role in supporting the local, regional, and national fire programs. During 2011, RIFC was busy supporting non-local incidents. Supporting Texas and the Southwest was the majority of activity for us this year.

We sent a total of 12 engines, four Type 2 IA handcrews, two camp crews and 212 overhead plus 190 personnel with engine crew rotations. An additional 82 overhead were assigned as local support to the off-unit incidents (i.e. drivers for airport runs).

Of those 12 engines, three engines were sent to support West Texas IA stayed a combined 622 days. We started the year by sending a BLM engine to Texas on April 8th. The assignment lasted for 202 days with 14 crew rotations. On May 8th we sent a Forest Service engine to Texas, the assignment lasted 225 days and 15 rotations. On June 4th we sent another BLM engine that stayed 195 days and 12 rotations. There were 41 crew rotations for a total of 184 personnel for those three engines.

RIFC assigned a total of 484 overhead, 7 crews and 33 pieces of equipment to off-unit assignments. Below shows a chart of how our resources supported each geographical area.

	EASTERN AREA	ALASKA	EASTERN GREAT BASIN	NORTHERN CALIFORNIA	NORTHERN ROCKIES	NORTHWEST	ROCKY MOUNTAIN	SOUTHERN AREA	SOUTHERN CALIFORNIA	SOUTHWEST	WESTERN GREAT BASIN	AUSTRALIA	CANADA	NATIONAL INTERAGENCY COORDINATION
OVERHEAD*	4	1	24	0	10	11	23	325	1	70	15	0	0	0
CREW**	0	0	1	0	0	0	1	0	0	5	0	0	0	0
EQUIPMENT	0	0	1	0	0	1	5	7	0	11	8	0	0	0

*Included engine crew rotations and drivers.

**Included camp crews.

Below are the total numbers of resources processed by the Richfield Interagency Fire Center. In 2011, Richfield Fire Center filled 1,620 orders (not counting supplies), of which 524 were off unit requests.

RICHFIELD FIRE CENTER RESOURCE ORDERS – RESOURCE ORDER & STATUS SYSTEM REPORT									
	ENTER	PLACE	RETRIEVE	FILL	REASSIGN	RELEASE	CANCEL	CANCEL UTF	UTF
AIRCRAFT	213	196	21	36	42	193	9	5	0
CREW	66	69	6	18	10	101	4	2	3
EQUIPMENT	315	110	6	229	2	337	23	5	9
OVERHEAD	2,277	1,916	169	1,338	302	3,024	40	18	131
SUPPLY	3,399	134	1	3,063	0	139	130	4	0
TOTAL	6,271	2,425	202	4,683	356	3,794	206	34	143

PREVENTION/MITIGATION

Central Utah is divided into an East and West Zone for prevention. The East Zone’s responsibility is for the Richfield and Fremont Ranger Districts of the Fishlake National Forest and the BLM Richfield Field Office. The West Zone is responsible for the Beaver and Fillmore Ranger Districts of the Fishlake National Forest and the BLM Fillmore Field Office.

Prevention personnel and Smokey Bear made numerous public appearances and contacts to educate the public about wildfire prevention and campfire safety throughout 2011. Time was also spent maintaining, replacing and repairing information signs. In addition, prevention personnel conducted community education meetings, assisted volunteer fire departments with various trainings, completed numerous patrols throughout the summer and assisted with public information for prescribed burns, fuels projects and wildfires.

Neither zone entered into fire restrictions during the 2011 fire season. Below is a table of prevention activities and accomplishments for both zones.

	Parades	Workshops	School/ Neighborhoods/ Smokey Bear Programs	Brochures Distributed for the Year	Radio Spots / PSA	Signs Installed & maintained	Fuels & RX Assists	Assist with PIO for Fires & RX
East Zone	10	6	35	3,000	10	125	16	5
West Zone	25	0	35	3,500	0	85	8	15



Courtesy of Jill Ivie



Courtesy of Jill Ivie

2011 East Zone Prevention Activities and Accomplishments

<p>Snow College Career Fair Sevier Valley Sportsman's Expo Fire Information/Education Open House in Bicknell Fire Information/Education Open House in Monroe Fire Information/Education Open House in Salina Fire Information/Education Open House in Richfield Fire Information/Education Open House in Junction Central Region 8th Grade Career Day Richfield Library Program Natural Resource Festival Flat Stanley Program D4 Fire Safety Orientation 3 Ea- Girl Camp Certifications 4 Ea - Boy Scout Programs Richfield High School Summer Program 3 Ea - Fishlake Evening Programs 2 Ea - Radio Talk Show</p>	<p>Life Included Presentation Richfield Parade Salina Parade Redmond Parade Monroe Parade Torrey Parade Loa Parade Sevier County Fair Wayne County Fair Richfield Care Center Koosharem 3rd Grade Science Camp Gooseberry 3rd Grade Program Salina 2nd Grade Field Trip to Maple Grove Loa 5th and 6th Grade Field Trip to Twin Creeks Ashman 1st Grade Field Trip to Maple Grove Community Safety Day</p>
--	---

2011 West Zone Prevention Activities and Accomplishments

<p>Community Education Meeting in Beaver County Community Education Meeting in Millard County Supported community fire councils and homeowners associations with CWPP's and chippers days Education program – Beaver Education program – Fillmore Education Program – Delta Education Program – Nephi Parades & Rodeos – Fillmore, Delta, Nephi, Scipio, Kanosh, Minersville, Beaver, Oak City, Hinckley County Fairs – Millard and Juab County Interagency Communications/Education Committee Central Utah/Color Country WUI/Fuels Committee Utah Living with Fire Committee Forest Service Safety Committee Member</p>	<p>Assisted Volunteer Fire Departments with training, wildland fire investigations, and prevention activities CISM Member Rocky Mountain, Beaver City Water Project, UNEV Pipeline, ENEL (Geothermal Plant), Magnum Gas, Milford Wind Corridor Transmission Line, Mona Line Patrolled and performed Forest Protection Officer (FPO) duties approximately 20 days. Conducted inspections weekly on Special Use and recreation projects on Beaver Ranger District Developed and reviewed NEPA wildland fire prevention stipulations and mitigation measures for authorized action on Forest Service and BLM lands</p>
--	---

TRAINING

For the 2011/2012 Training Season there were a total of 122 training courses completed. In addition, RT212, Chain Saw refresher training, RT212, was put on in Beaver, Loa, and Teasdale where 41 students attended.

Several sessions of RT130, Annual Fire Refresher, was conducted providing this training to 194 people, including 34 contractors.

Nomination received and Processed	FS	BLM	BLM ADs	Total
Nominations for Utah Wildfire Academy	52	18	0	70
Nominations for Utah Fire and Rescue Academy (UFRA)	21	11	0	32
Nominations for Great Basin	36	10	0	46
Nominations for NAFRI	0	0	0	0
Nominations for Other Geographic Areas	4	0	0	4
Nominations for Prescribed Fire Training Center (PTFC)	3	0	0	3
Nominations for GB Engine Academy	3	0	0	3
Nominations for Dixie Applied Technology Center (DXATC)	3	1	0	4
Total Nominations Received	122	40	0	162
Nominations not approved due to missing prerequisites	3	1	0	4
Nominations not approved due to budgetary or other	10	5	0	15
Total Nominations Approved Locally	109	34	0	143
Student Not Accepted into course	6	0	0	0
Students Accepted into course	103	34	0	137
Non-attendance due to student cancellation	7	2	0	9
Non-attendance due to course cancellation	5	1	0	6
Non-attendance due to student no show	0	0	0	0
Total Training courses completed	91	31	0	122

Locally sponsored NWCG Training

Course Number	Course Name	Instructor	Local Students	Non-Local Students	Total Students
S133	Look up, look down, look around	Jake Freeborn	4	0	4
S212	Wildland Fire Chain Saws	Stuart Coombs	19	0	19
S212	Wildland Fire Chain Saws	Jarad Teeples	6	0	6
S212	Wildland Fire Chain Saws	Kelly Cornwall	3	0	3
A219	Helicopter External Load	Lance Jorg	10	0	10
A219	Helicopter External Load	Lance Jorg	4	0	4
RT300 FS	FS Burn Boss Refresher	Russ Ivie	17	0	17

QUALIFICATIONS

A total of 233 personnel were issued qualifications cards by Central Utah in 2011; 144 to FS employees and 89 to BLM employees, 20 of which are BLM sponsored ADs.

Employee Location & Type	Fire	Fuels	Other	Total
Fillmore Ranger District	12	1	9	22
Fremont River Ranger District	14	5	7	26
Beaver Ranger District	14	1	13	28
Richfield Ranger District	10	4	12	26
Supervisor's Office	7	1	34	42
Forest Total	57	12	75	144

Employee Location & Type	Fire	Fuels	Other	Total
Richfield	11	1	10	22
Hanksville	0	0	2	2
ADs	20	0	0	20
Richfield Field Office Total	31	1	12	44
Fillmore	14	5	11	30
Little Sahara	15	0	0	15
Fillmore Field Office Total	29	5	11	45
BLM Total	60	6	23	89

Position Task Books

During 2011, 114 new position task books were issued, 52 were certified, and 43 expired.

Function	FS Issued	FS Certified	FS Expired	BLM Issued	BLM Certified	BLM Expired
Air Ops	3	1	3	2	0	3
Command & Staff	19	7	2	11	10	1
Dispatch	5	0	0	2	0	0
Finance	0	0	5	1	1	3
Logistics	5	3	1	5	2	1
Operations	17	7	14	30	14	3
Planning	10	6	6	1	1	0
Prevention & Investigation	2	0	0	1	0	1
Total	61	24	31	53	28	12

BLM TRESPASS CASES

There were 17 human caused fires that involved BLM land in 2011. Seven occurred in the Richfield Field Office burning a total of 55 acres of BLM land. From the five investigation reports received for the Richfield Field Office, all have been recommended not to proceed. The other 2 investigation reports have yet to be tuned in.

Ten human caused fires occurred on the Fillmore Field Office for 439.80 acres. From the seven fires that were investigated, three have been recommended to proceed.

Below is a breakdown of human caused fires by field office.

RICHFIELD FIELD OFFICE

Name	Date	Owner	Acres	Cause	Investigated	Potential Trespass Case
Goat 1	4/22/2011	BLM	.10	Land Clear	Yes	No
Goat 2	4/22/2011	BLM	.10	Land clear	Yes	No
Goat 3	4/22/2011	BLM	.10	Land clear	Yes	No
Goat 4	4/22/2011	BLM	.10	Land Clear	Yes	No
Mill Meadow South	4/29/2011	BLM	.10	Debris Burn	Yes	Waiting for reports
Mill Meadow North	4/20/2011	BLM	.10	Debris Burn	Yes	Waiting for reports
Annabella Dump	7/2/2011	State/BLM	54.40	Fireworks	Yes	No

FILLMORE FIELD OFFICE

Name	Date	Owner	Acres	Cause	Investigated	Potential Trespass Case
Churchill	4/21/2011	BLM	.10	Undetermined	Yes	No
Rockwell Eat	6/2/2011	BLM	.10	Undetermined	Yes	No
Mag	7/19/2011	State/BLM	90.0	Vehicle Fire	Yes	Yes
Mont	7/23/2011	BLM	.20	Campfire	Yes	No
Gap	8/11/2011	BLM/State	245	Vehicle Fire	Yes	Yes
Pack	8/22/2011	BLM	1.30	Unknown	No	No
MP 14	8/22/2011	BLM	4.0	Unknown	No	No
MM 185	9/1/2011	BLM	2.0	Unknown	No	No
Desert Mountain	9/4/2011	BLM	97.0	Exploding Target	Yes	Yes
Dumpster	9/5/2011	BLM	.10	Campfire log in dumpster	Yes	No