
RICHFIELD INTERAGENCY FIRE CENTER

2010 ANNUAL REPORT

US Department of Agriculture

U.S. Forest Service

Fishlake National Forest

U.S. Department of the Interior

Bureau of Land Management

Richfield Field Office

Fillmore Field Office

Bureau of Indian Affairs

Southern Paiute Field Station

National Park Service

Capitol Reef

U.S. Fish and Wildlife Service

Fish Springs National Wildlife Refuge

State of Utah

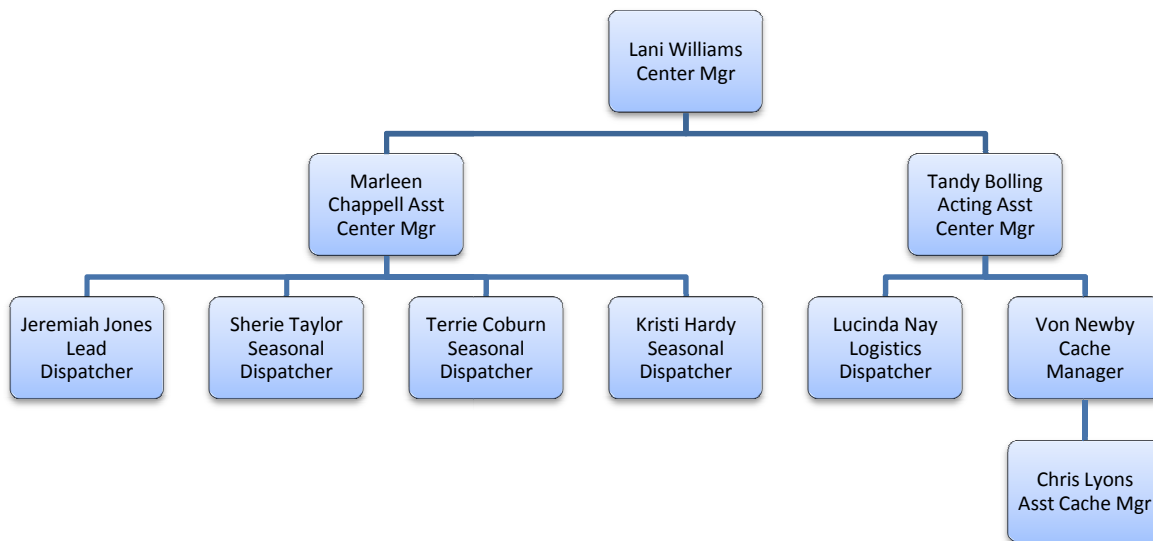
Department of Forestry, Fire & State Lands

South Central Area Office

INTRODUCTION

The Richfield Interagency Fire Center (RIFC) is located in central Utah. The response area of RIFC and the Central Utah Fire Organization consists of over 11 million acres including U.S. Forest Service, Bureau of Land Management, National Park Service, BIA Tribal, State Division of Wildlife, and State Division of Forestry, Fire and State lands. Eight counties are included within the jurisdiction boundaries: Juab, Millard, Sevier, Sanpete, Piute, Wayne, Garfield and Beaver. Interstate highways I-15 and I-70 transect through the area as well as major highways. The terrain includes the Great Basin Desert, the Colorado Plateau, fertile valleys, and high mountain ecosystems. Elevations range from approximately 4,000 to over 12,000 feet.

RICHFIELD INTERAGENCY DISPATCH CENTER ORGANIZATION CHART



HIGHLIGHTS

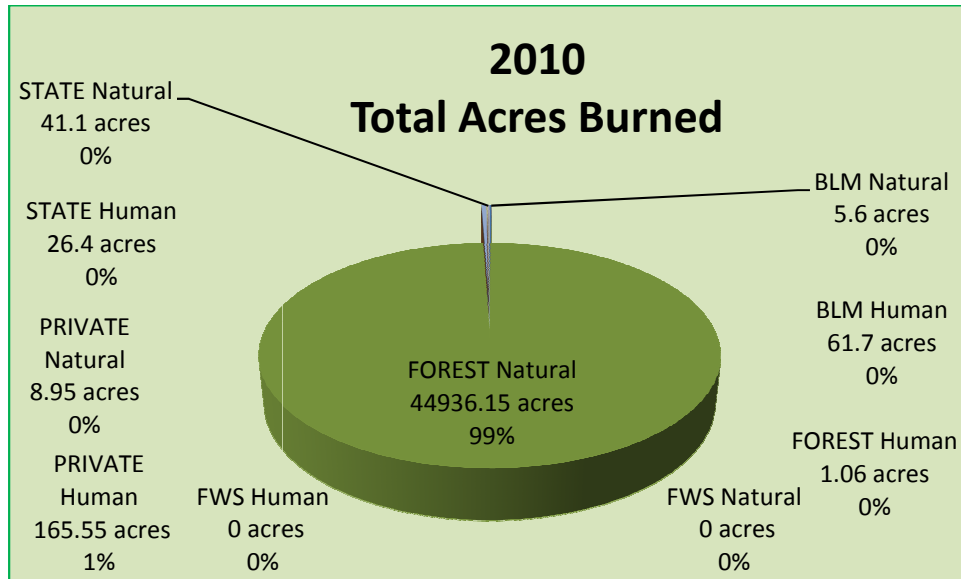
The first lightning caused fire started on June 6th and the last one occurred on September 29th. We had 137 fires for a total of 45,229 acres. Of the 137 acres 76 were natural caused fire with 44,974 acres and 60 were human caused fires with 255 acres.

We had one large fire, Twitchell Canyon totaling 44,892 acres. The Twitchell Canyon fire started on July 20th and was finally called out November 15th. During the course of the Twitchell we had three Type 4 ICs, three Type 3 Organizations, two Type 2 Incident Management Teams and one NIMO Team. Expanded dispatch was activated September 4th for the Twitchell fire and was active until October 8th. There was also numerous aircraft assigned including 12 Type 1, 11 Type 3 and three Type 2 Helicopters.

For the 2010 fire season, the BLM staffed a total, of 11 engines and two water tenders. The Fishlake National Forest staffed six engines and two wildfire modules. The Interagency Fishlake Regulars, Type II IA Crew was able to take one assignment this year to the Southwest. Eight Type 4 engines and two T6 engines were able to take off-unit assignments. The Miles City Type 3 Helicopter was prepositioned at RIFC for three weeks.

We employed a total of 104 casuals during the fire season (reemployment is counted towards an employment).

The Richfield Interagency Fire Center had detailers in both the Assistant Center Manager – Operations and the Assistant Center Manager – Logistics position for the entire season.

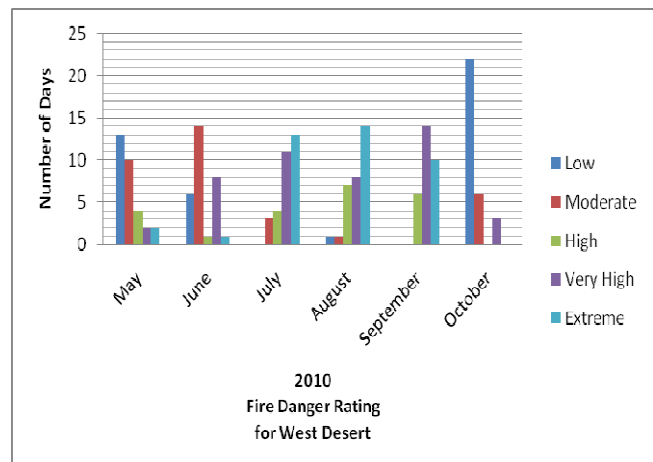
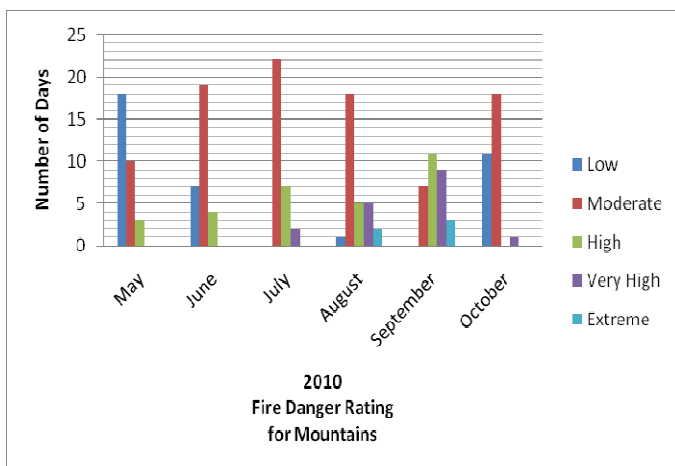


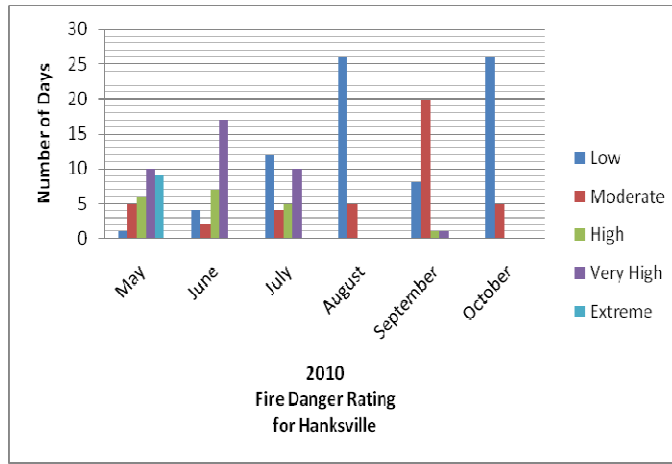
2010 FUELS AND FIRE WEATHER

A cool spring slowed grass emergence resulting in the stunted growth of the cheatgrass. High snowpack in the mountains delayed green-up and curing well into the summer at mid and high elevations. Heavy snows in the West Deserts compacted most grasses that remained from last season.

The seasonal outlook predicted a below normal fire season though May for the West Desert and a below normal season for the mountains in June – August.

During the 2010 fire season we had a red flag warning a total of 63 times in the West Desert, Mountain and Hanksville fire danger rating areas.





AVIATION

The Central Utah Interagency Fire Organization does not have exclusive use contracts for helicopters, air-attack or single engine air tankers. The Fillmore and Nephi SEAT Bases were not used during the season.

Incidents	Flight Hours
Wildhorse PJ	134.5
Bug Flights	21.5
Misc Flight Follow	16.18
Wildfires	798.57

Below is a summary of aircraft used on the Twitchell Canyon fire

Aircraft	No. of Aircraft
Type 1 Helicopter, Limited	12
Type 2 Helicopter	3
Type 3 Helicopter	11
Air Attack	22
Heavy Air Tankers	23
SEATS	3
Recon	1
Lead Plane	8

STATISTICS SUMMARY

Central Utah was below the ten-year average in both the number of fires and acres burnt. We had approximately 100 less fires and burnt 6,167 fewer acres than the average. Twitchell Canyon constituted 99% of the acres burned for 2010.

Color Country and West Desert BLM Fires and Acres by Field Office

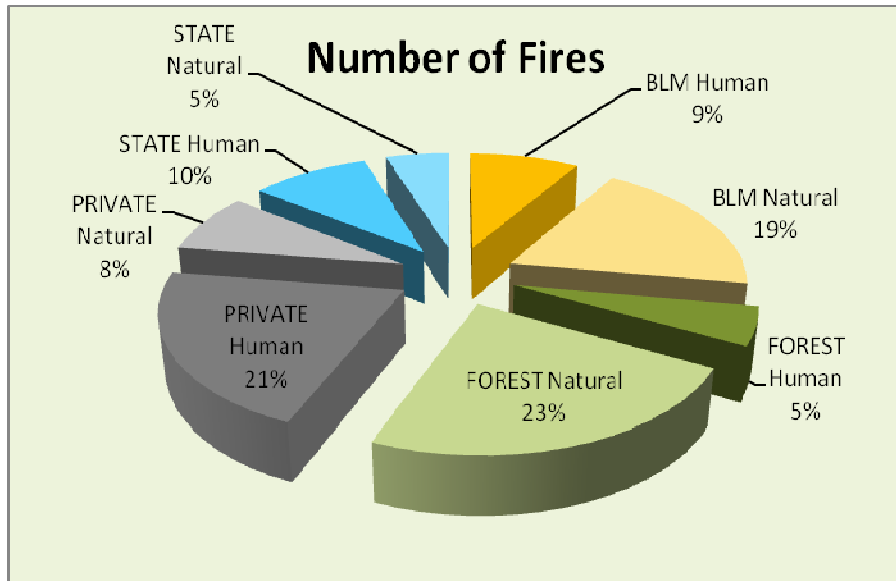
Field Office	Natural Fires	Natural Acres	Human Fires	Human Acres	Total Fires	Total Acres
Richfield	12	2.20	3	.50	15	2.7
Fillmore	14	3.40	9	61.20	23	64.60
Totals	26	5.60	12	61.70	38	67.30

Fishlake National Forest Fires and Acres by Ranger District

Ranger District	Natural Fires	Natural Acres	Human Fires	Human Acres	Total Fires	Total Acres
Fillmore	16	28.25	3	.45	19	28.7
Beaver	2	44892.10	0	0	2	44874.10
Fremont River	5	.90	2	.10	7	1.0
Richfield	9	14.90	2	.50	11	15.40
Total	32	44,936.15	7	1.05	39	45,015.20

South Central State Fires and Acres by County (Includes private and state lands)

County	Natural Fires	Natural Acres	Human Fires	Human Acres	Total Fires	Total Acres
Juab	7	.80	16	170.15	23	170.95
Millard	6	8.25	14	18.7	20	26.95
Piute	0	0	0	0	0	0
Sanpete	3	39.90	7	2.6	10	42.50
Sevier	2	1.10	4	.40	6	1.50
Wayne	0	0	1	.10	1	.10
Total	18	50	42	192	60	242



Fire occurrence and acres burned over 10 years

YEAR	RID FIRE	RID ACRES	FIF FIRE	FIF ACRES	SCS FIRE	SCS ACRES	SANPETE FIRE	SANPETE ACRES	TOTAL FIRE	TOTAL ACRES
2001	124	10,779	89	927	202	4,243	25	16	440	15,965
2002	29	426	64	3,004	85	997	5	0	183	4,427
2003	99	36,615	71	585	115	6,714	22	14	307	43,928
2004	75	907	53	250	87	3,062	13	4,722	228	8,941
2005	79	11,416	74	1,953	121	9,476	7	15	281	22,860
2006	107	34,290	76	30,692	119	19,856	3	1,600	305	86,438
2007	49	198,045	31	494	99	76,535	5	1	184	275,075
2008	31	934	23	327	66	422	2	45	122	1,728
2009	39	588	35	7,265	100	1,687	4	0	178	9,541
2010	38	67	39	44,937	60	242	0	0	137	45,246
TOTAL	670	294,067	555	90,434	1054	123,234	86	6,413	2365	514,131
AVER.	67	29,407	56	9,043	105	12,323	9	641	237	51,413

RID = BLM, Richfield and Fillmore Field Offices

FIF = Fishlake National Forest

SCS = South Central State – Utah Division of Forestry, Fire, & State Lands. Includes private lands.

Sanpete = Sanpete Ranger District, Manti Lasal National Forest.

LOCAL FIRE DEPARTMENTS

In 2010, the 32 fire departments of Central Utah were dispatched 147 times and responded with 386 units.

Volunteer Fire Departments	Assist to Private	Assist to State	Assist to USFS	Assist to BLM	Total Assists
Aurora			1	1	2
Bicknell	2			2	4
Elsinore			2	2	4
Koosharem	2		1	3	6
Monroe	1		4	5	10
Richfield	3			3	6
Salina	1			1	2
Ephraim	2			2	4
Fairview	8			8	16
Fountain Green			2	2	4
Gunnison	2		4	6	12
Indianola	1			1	2
Moroni	5			5	10
Mt.Pleasant	2			2	4
Sterling	1	2	1	4	8
Wales	1			1	2
Eureka		1	3	4	8
Levan	6	5	4	15	30
Millard Co. WT			2	2	4
Mona	5	4		9	18
Nephi	9	7		16	32
Rocky Ridge	2	2		4	8
Delta	2	4		6	12
Fillmore	2		4	6	12
Hinkley	2			2	4
Holden	4		4	8	16
Kanosh	11		4	15	30
Leamington	6			6	12
Lynndyl	3			3	6
Meadow	8	3	2	13	26
Oak City	2	2	2	6	12
Scipio	3	5	3	11	22
Wales	1			1	2
Totals	97	35	43	175	350

PREScribed FIRE ACCOMPLISHMENTS

The prescribed fire activity occurred during the spring, fall and into the winter with a total of 10 fires for a total of 1,694 acres.

Agency	Fires	Acres
FISHLAKE NF	9	494
BLM (RICHFIELD/FILLMORE)	0	0
FISH & WILDLIFE	1	1200
STATE/PVT	0	0
TOTAL	10	1,694

RESOURCE ORDERING AND STATUS SYSTEM (ROSS)

In 2010 RIFC filled 1,072 resource orders of which 217 were off unit requests. The Richfield Interagency Fire Center plays a vital role in supporting the local, regional, and national fire programs. The figures below represent all the resource orders processed during 2010.

RICHFIELD FIRE CENTER RESOURCE ORDERS - RESOURCE ORDER & STATUS SYSTEM REPORT									
	FILLED	UN-FILLED	UTF	ENTERED	PLACED	RETRIEVED	REASSIGNED	RELEASED	CANCELLED
AIRCRAFT	24	0	1	150	57	13	18	148	5
CREW	14	0	2	17	53	5	8	82	4
EQUIPMENT	172	7	7	71	277	5	1	305	18
OVERHEAD	862	38	87	517	1,859	116	252	2,512	27

PREVENTION / MITIGATION

Central Utah is divided into a West and East Zone for prevention. The East Zone is responsible for the Forest Service Richfield and Fremont River Districts and Richfield BLM Field Office. The West Zone is responsible for the Forest Service Fillmore and Beaver Districts and Fillmore BLM Field Office. Below is a table of prevention activities and accomplishments for both zones. Central Utah Interagency Fire Zone did not enter into fire restrictions during the 2010 fire season.

	Parades	Workshops	School/ Neighborhood/S mokey Bear Programs	Brochures Distributed for the Year	Radio Spots	Signs Installed & Maintained (monthly average)	Fuels Projects & RX Assistance
East Zone Prevention	6	2	24	2,130	23	138	85
West Zone Prevention	14	0	18	10,600	0	35	26

TRAINING

For the 2009/2010 Training Season

Nomination received and Processed	FS	BLM	BLM ADs	Total
Nominations for Utah Wildfire Academy	43	27	17	87
Nominations for Utah Fire and Rescue Academy (UFRA)	12	32	0	44
Nominations for Great Basin	33	36	2	71
Nominations for NAFRI	3	4	0	7
Nominations for Other Geographic Areas	11	5	0	16
Total Nominations Received	102	104	19	225
Nominations not approved due to missing prerequisites	2	6	1	9
Nominations not approved due to budgetary or other	8	24	0	32
Total Nominations Approved Locally	92	74	18	184
Student Not Accepted into course	7	2	0	9
Students Accepted into course	85	72	18	175
Non-attendance due to student cancellation	10	12	0	22
Non-attendance due to course cancelation	2	2	0	4
Non-attendance due to student no show	1	0	0	1
Total Training courses completed	73	58	18	149

Locally sponsored NWCG Training

Course Number	Course Name	Instructor	Local Students	Non- Local Students	Total Students
D110	Dispatch Recorder	Lani Williams	9	1	10
S133	Look up, look down, look around	Robert Lopez	21	0	21
S212	Wildland Fire Chain Saws	Kelly Cornwall	8	0	8
S212	Wildland Fire Chain Saws	Kerry Stevens	10	0	10
RT271	Helicopter Crewmember Refresher	Lance Jorg	20	0	20
RX310	Intro to Fire Effects	Dana Cohen	23	12	35

In addition, RT212, Chain Saw refresher training, was put on in Beaver, Loa, and Teasdale where 29 students attended.

Several sessions of RT130, Annual Fire Refresher, was conducted providing this training to 210 people, including 47 contractors.

Qualifications

A total of 263 personnel were issued qualifications cards in 2010; 149 to FS employees and 114 to BLM employees, 32 of which are BLM sponsored ADs.

Employee Location & Type	Fire	Fuels	Other	Total
Fillmore Ranger District	10	0	7	17
Fremont River Ranger District	15	4	14	33
Beaver Ranger District	14	1	11	26
Richfield Ranger District	13	5	14	32
Supervisor's Office	5	1	35	41
Forest Total	57	11	81	149
Richfield	8	1	13	22
Hanksville	0	0	2	2
ADs	32	0	0	32
Richfield Field Office Total	40	1	15	56
Fillmore	19	7	14	40
Little Sahara	14	0	4	18
Fillmore Field Office Total	33	7	18	58

Position Task Books

During 2010, 73 new position task books were issued, 54 were certified, and 43 expired.

Function	FS Issued	FS Certified	FS Expired	BLM Issued	BLM Certified	BLM Expired
Air Ops	2	2	3	2	0	2
Command & Staff	8	3	2	3	6	3
Dispatch	5	2	4	3	5	2
Finance	3	2	2	0	0	0
Logistics	10	6	2	2	1	1
Operations	15	8	6	12	10	3
Planning	8	7	9	0	1	2
Prevention & Investigation	0	1	0	0	0	2
Total	51	31	28	22	23	15

BLM TRESPASS CASES

There were 12 human caused fires that involved BLM land in 2010; 3 occurred in the Richfield Field Office burning a total of .5 acres, and 9 were in the Fillmore Field Office for 61.2 acres.

From the three investigation reports received, 2 have been recommended not to proceed, and one is being sent forward for cost recovery. The other 9 investigator reports have yet to be completed.

USDA-Forest Service PERSONNEL EMPLOYED ON WILDFIRE PRESUPPRESSION AND SUPPRESSION ACTIVITIES	UNIT Fishlake National Forest 0408
	CALENDAR YEAR 2010

INSTRUCTIONS:

1. Data for items 1a, 1b, and 2b should be taken from planning and budget records in the Supervisor's Office.
2. Items 1c, 1d, 2b, and 2c may be obtained from actual records in the S.O. or from the Ranger District. If obtained from the Ranger having intimate knowledge on use of his personnel, these items may be estimated. Complete accuracy is not required.
3. Item 3 may be estimated where large numbers of casuals are employed. Since each reemployment counts as a new employment, sufficient accuracy can be obtained by sample counts and measurement of time slips.

ITEM NO.	ITEM	NUMBER	
		SUB-TOTAL	TOTAL
1.	Regular appointed personnel		
	a. Full-time fire management (<i>20 pay periods or more</i>)	9	
	b. Part-time fire management	21	
	c. Others used on presuppression sometime during year	8	
	d. Others used on suppression (<i>exclude those reported under a, b, or c</i>)	42	
	e. Total (<i>a + b + c + d</i>)		80
2.	Seasonal or short-term personnel	28	
	a. Regular fire control (<i>crews, firefighters, patrol, lookouts, etc.</i>)	9	
	b. Others (<i>BD, KV, BR, R&T, etc.</i>) who spent time on fire control work	8	
	c. Emergency firefighters (<i>exclude those reported under a or b</i>)		
	d. Total (<i>a + b + c</i>)		45
3.	Total number of casuals employed on fire suppression (<i>Each reemployment counts as an employment</i>)		0
4.	Number of casuals (<i>included in Item 3</i>) employed for first time (<i>Ranger's estimate is adequate</i>)	0	
5.	GRAND TOTAL (<i>1e + 2d + 3</i>)		125

REMARKS (*if necessary*)

Casuals are hired by the Bureau of Land Management for the dispatch area.

SUBMITTED BY (<i>Signature</i>) Scott Tober Tandy Bolling	TITLE Fire Planner Acting Asssitant Center Manager
--	---

INPUTS FOR FORM 5100-9

CENTRAL UTAH INTERAGENCY FIRE ACRES

BLM	6,577,159
Department of Defense	961
National Park Service	244,802
Private	1,763,261
School Trust Lands	930,212
Indian Tribal Lands	2,741
Utah Department of Transportation	252
Utah Department of Wildlife Resources	79,967
Forest Service	1,835,648
Fish and Wildlife Service	17,975
State Park and Recreation	<u>1,598</u>
Total	11,454,576