

GOVERNOR
Susana Martinez



DIRECTOR AND SECRETARY
TO THE COMMISSION
Tod W. Stevenson

STATE OF NEW MEXICO
DEPARTMENT OF GAME & FISH

One Wildlife Way
Post Office Box 25112
Santa Fe, NM 87504
Phone: (505) 476-8008
Fax: (505) 476-8124

Visit our website at www.wildlife.state.nm.us
For information call: (505) 476-8000
To order free publications call: (800) 862-9310

STATE GAME COMMISSIONERS

JIM McCLINTIC
Chairman
Albuquerque, NM

THOMAS "DICK" SALOPEK
Vice-Chairman
Las Cruces, NM

DR. TOM ARVAS
Commissioner
Albuquerque, NM

SCOTT BIDEKAIN
Commissioner
Tucuman, NM

ROBERT ESPINOZA, SR.
Commissioner
Farmington, NM

ROBERT V. HOFFMAN
Commissioner
Las Cruces, NM

BILL MONTOYA
Commissioner
Alto, NM

August 24, 2011

Dear Hunter:

This letter is to inform you that portions of Game Management Unit (GMU) 6C have been closed to the public effective July 30, 2011 pursuant to the United States Department of Agriculture Order No. 10-358 (attached). This closure affects the Forest Service Lands available to hunt this season within your elk hunting unit.

While over 80% of GMU 6C remains open, the closure has impacted a portion of the unit with excellent habitat and hunting. Due to the closure, the New Mexico Department of Game and Fish (Department) is providing you the opportunity to receive a refund of your license fee if you choose not to hunt.

If you are interested in receiving a refund of your license fee, you must send your hunting license to:

The New Mexico Department of Game and Fish
Attn: Rhonda Holderman
PO Box 25112
Santa Fe, NM 87504

You may also hand deliver your license to our Santa Fe office at One Wildlife Way, Santa Fe.

PLEASE NOTE - If a refund is requested, all licenses must be received by the Department or postmarked prior to the start date of your hunt.

If you elect to retain your license and hunt this fall, the Department wishes you the best of luck on your hunt. If you have any questions regarding the closure, please contact the Santa Fe National Forest Service office. Any questions regarding refunds should be directed to Rhonda Holderman at 505/476-8072.

I apologize for any inconvenience the Forest Service closure has caused. Thank you for your support of New Mexico's wildlife resources.

Best Regards,

James S. Lane, Jr.
Chief, Wildlife Management Division



**UNITED STATES DEPARTMENT OF AGRICULTURE
SANTA FE NATIONAL FOREST AND VALLES CALDERA NATIONAL PRESERVE
STAGE III FIRE RESTRICTIONS**

The Las Conchas Fire burn areas on the Santa Fe National Forest and on the Valles Caldera National Preserve will remain in Stage III Fire Restrictions as follows:

PROHIBITIONS

Pursuant to 16 U.S.C. 551 and 36 CFR 261.50 (a) and (b), the following acts are prohibited on all National Forest System lands on the Santa Fe National Forest and lands on the Valles Caldera National Preserve within the Las Conchas Fire burn area, in the following counties, Los Alamos, Sandoval, Rio Arriba and Santa Fe within the state of New Mexico. The "restricted area" is as described in this Order and depicted on the attached map hereby incorporated into this Order as Exhibit A.

1. Going into or being upon the restricted area. 36 CFR 261.52 (e)

RESTRICTED AREA

From the South side of the fire heading west the following areas are closed:

1. All National Forest System (NFS) lands north of Jemez Indian Reservation and north and east of Forest Road (FR) 266 to the intersection with FR 10.
2. Heading north on FR10 any NFS lands east of FR10 to the intersection with NM Highway 4.
3. East on NM Highway 4, any NFS lands south of NM Highway 4 to the Las Conchas Trailhead.
4. Following a line directly north to the boundary with the Valles Caldera National Preserve and east to the longitude line 106 degrees 30'00" (as shown on the SFNF visitor map) and north through the Valles Caldera land, all NFS lands south and east to the Bandelier National Monument boundary.
5. The north side of the Valles Caldera National Preserve from the Cerro de Garita gate directly north to FR 144, northeast to FR 449 and northeast to FR 27, all lands south and east.
6. FR 27 north and east to Abiquiu Land Grant, all NFS lands south and east to the intersection of the Abiquiu Land Grant and Forest Road 31.
7. FR 31 to the south, all NFS lands south and west to the intersection with FR144.
8. FR 144 east, all NFS lands south to the boundary with Santa Clara Indian Reservation.
9. All NFS lands within Los Alamos County and Sandoval County north of Highway 4 and west of Highway 501.

EXEMPTIONS

Pursuant to 36 CFR 261.50 (e), the following persons are exempted from this order:

1. Persons with a Forest Service permit or letter specifically authorizing the prohibited act or omission.
2. Any Federal, State, or Local Officer, or member of an organized firefighting force in the performance of an official duty.

RESTRICTED AREA EXEMPTIONS

TR 287 – Quemazon Trail to Pipeline Road to trail intersection with Los Alamos
TR 290 – Perimeter Trail from Quemazon Trail north around Los Alamos
TR69 – Mitchell Trail to Guaje Ridge Trail
TR285 – Guaje Ridge Trail east from the intersection with Mitchell Trail
All trails east of Mitchell Trail and south of Guaje Ridge Trail
TR 279 – Cabra Loop Trails
TR 286 – Pajarito Trail to the south rim of Guaje Canyon
TR 297 – Rendija Canyon Trail
FR 442 – South rim of Guaje Canyon to Cabra Loop trails
FR 144


PURPOSE

The purpose of this Order is to provide for the public's health and safety and to protect National Forest system lands, resources and facilities during the current period of fire rehabilitation activities.

IMPLEMENTATION




1. This Order becomes effective at 12:01 a.m., Saturday, July 30, 2011, and will remain in force until rescinded or until July 30, 2012, whichever occurs first.
2. Any violation of these regulations is punishable as a Class B misdemeanor, by a fine of not more than \$5,000 for an individual or \$10,000 for an organization, or imprisonment for not more than six (6) months or both. Title 18 USC 551, and Title 18 USC 3559 and 3571.
3. This order supersedes any previous orders prohibiting the same acts covered by this Order.


By 
MARIA T. GARCIA,
Forest Supervisor
Santa Fe National Forest

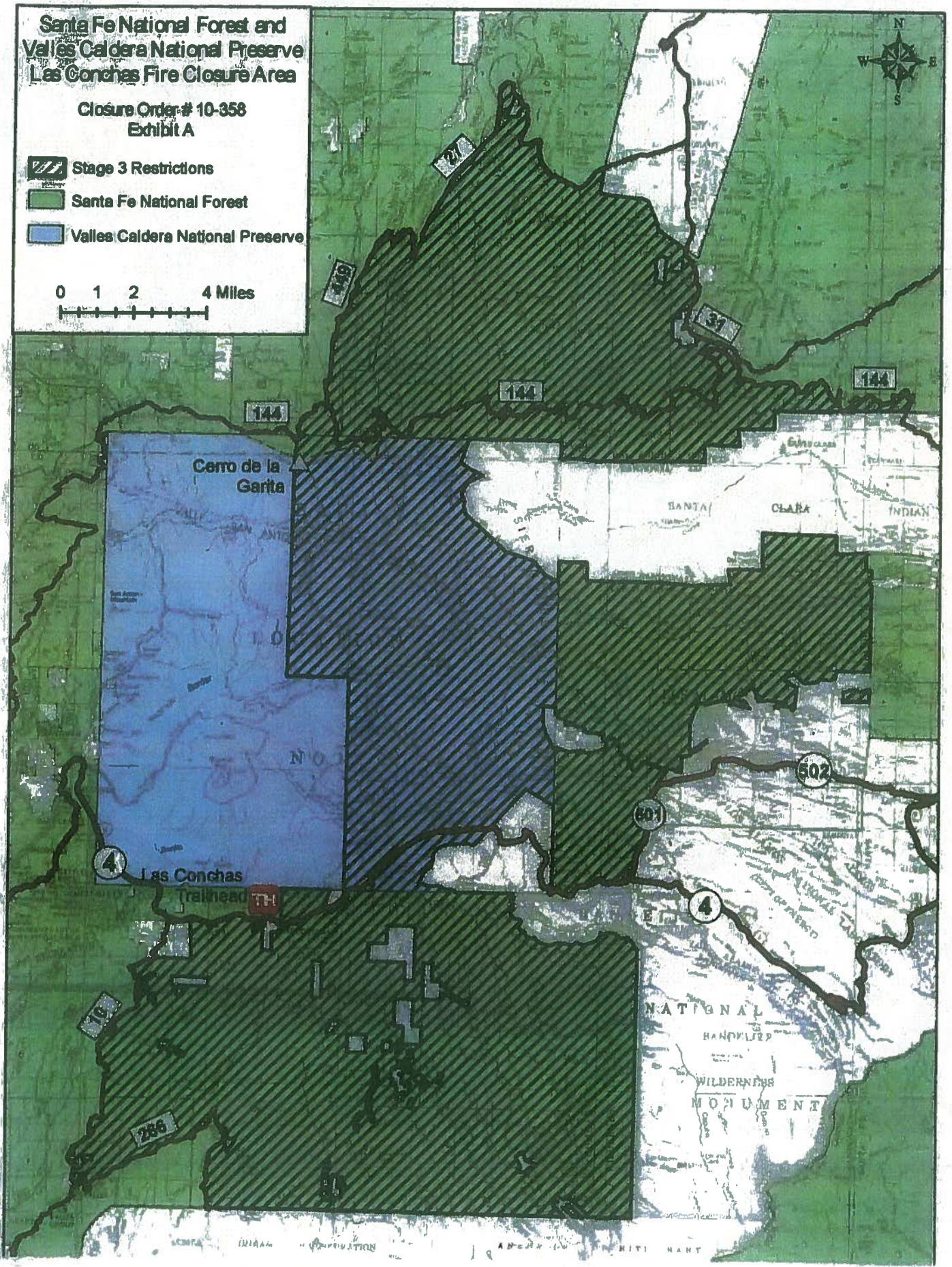
By 
DENNIS TROJILLO
Interim Executive Director
Valles Caldera National Preserve

**Santa Fe National Forest and
Valles Caldera National Preserve
Las Conchas Fire Closure Area**

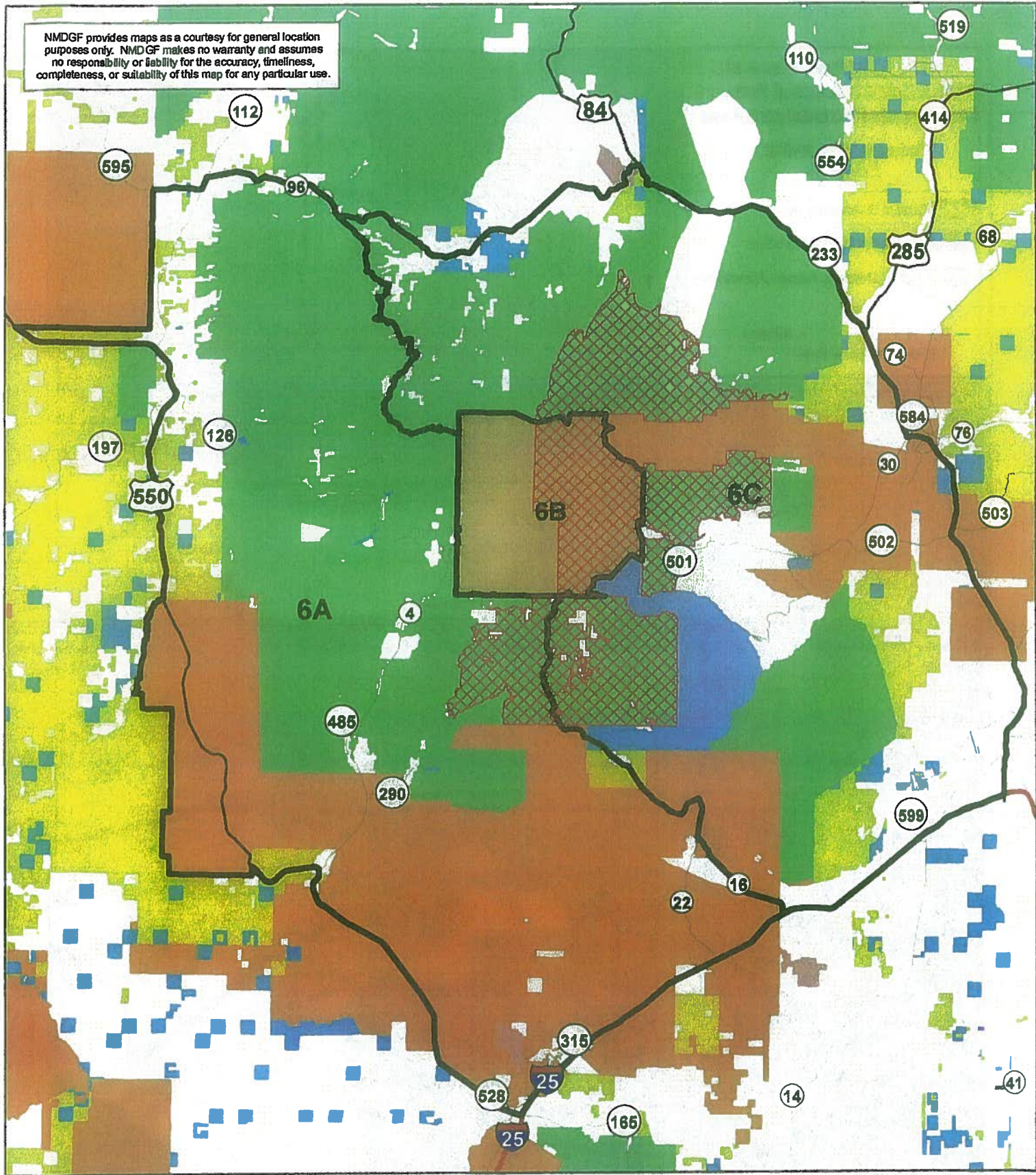
**Closure Order # 10-358
Exhibit A**



-  Stage 3 Restrictions
-  Santa Fe National Forest
-  Valles Caldera National Preserve

0 1 2 4 Miles




NMDGF provides maps as a courtesy for general location purposes only. NMDGF makes no warranty and assumes no responsibility or liability for the accuracy, timeliness, completeness, or suitability of this map for any particular use.



-  LasConchas_Closure (USFS 20110816)
-  GMU Boundaries (Unit 6)

