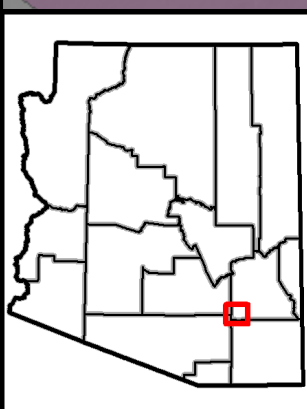
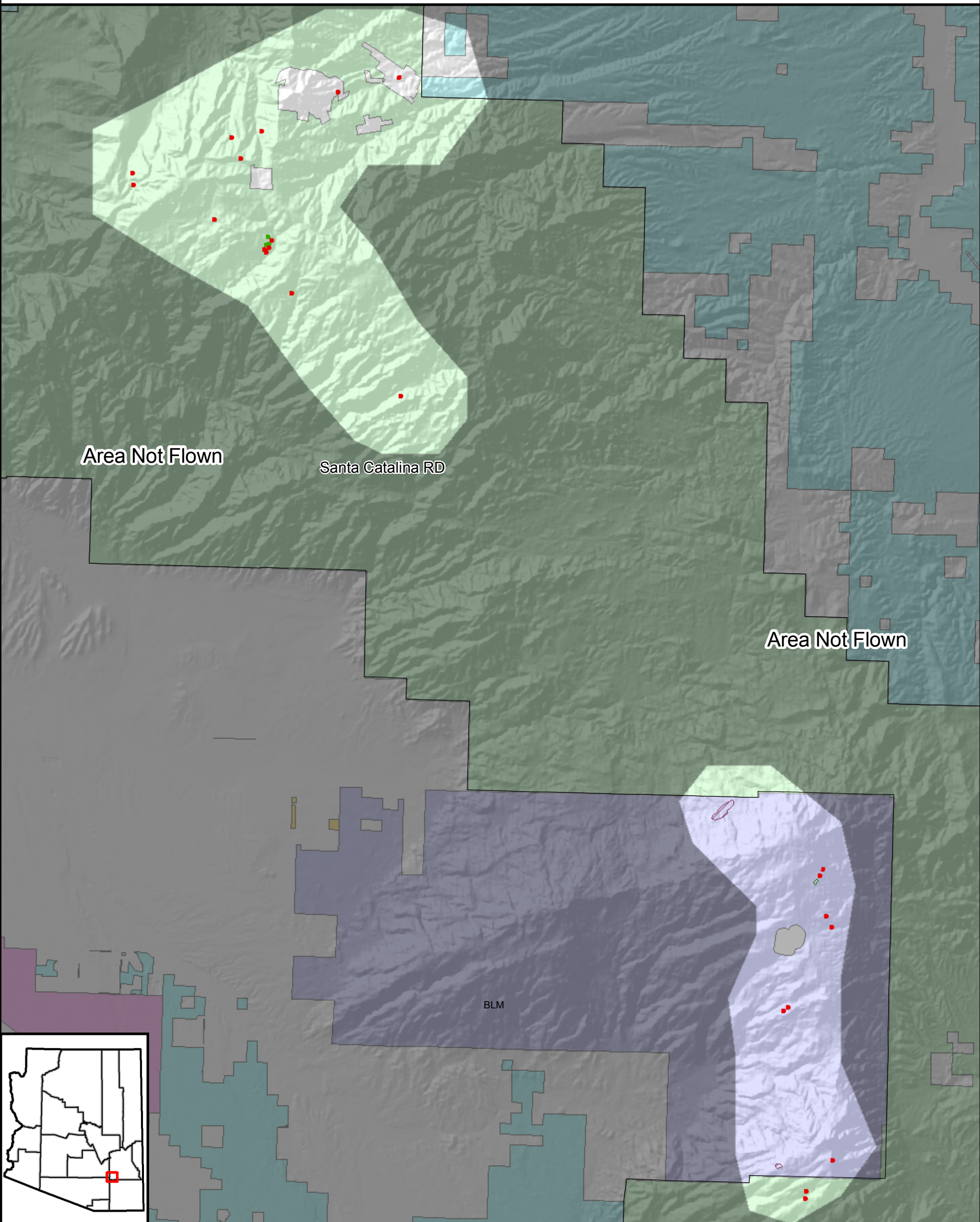




# 2009 Insect and Disease Aerial Detection Survey

## Coronado National Forest - Santa Catalina Ranger District



Ownership	
[Yellow]	Bureau of Land Management
[Light Yellow]	Bureau of Reclamation
[Light Blue]	County
[Light Green]	Tribal Land
[Light Purple]	State
[Light Orange]	Military
[Light Red]	National Park Service
[Light Grey]	Other
[White]	Private
[Light Green]	US Forest Service
[Light Blue]	US Fish & Wildlife Service

Mortality	
[Red]	Roundheaded Pine Beetle
[Orange]	Western Pine Beetle
[Green]	Doug-fir Beetle
[Blue]	Spruce Beetle
[Purple]	Western Balsam Bark Beetle
[Pink]	Pinyon Ips
[Light Pink]	Ips Engraver
[Light Green]	Fir Engraver
[Light Blue]	Aspen Mortality

Defoliation	
[Cross-hatch]	Unknown Defoliator (Heavy)
[Diagonal lines]	Unknown Defoliator (Light)
[Blue diagonal lines]	Western Spruce Budworm (Light)
[Dark blue diagonal lines]	Western Spruce Budworm (Heavy)
[Red diagonal lines]	Pine Sawfly (Heavy)
[Light red diagonal lines]	Pine Sawfly (Light)
[Orange diagonal lines]	Nepytia janetae (Light)
[Dark orange diagonal lines]	Nepytia janetae (Heavy)
[Green diagonal lines]	Aspen Defoliation (Heavy)
[Light green diagonal lines]	Aspen Defoliation (Light)

Other	
[Yellow diagonal lines]	Foliage Discoloration (Light)
[Pink diagonal lines]	Needlecast (Light)
[Grey]	Fire

Other Features	
[Black line]	Major Roads
[Dark Grey]	Area Not Flown
[Light Grey]	County

Mapped produced by Forest Health Staff  
 Arizona Zone - Date  
 UTM Zone 12, North American Datum 1983

0 0.5 1 2 3 4  
 1:135,000  
 Miles

Forest Health Protection (FHP) and the Arizona State Forestry Division strive to maintain an accurate Aerial Detection Survey (ADS) Dataset, but due to the conditions under which the data are collected, FHP and its partners shall not be held responsible for missing or inaccurate data. ADS data are not intended to replace more specific information. An accuracy assessment has not been done for this dataset; however, ground checks are completed in accordance with local and national guidelines: <http://www.fs.fed.us/foresthealth/aviation/qualityassurance.shtml>. Maps and data may be updated without notice. Please cite "USDA Forest Service, Forest Health Protection and Arizona State Forestry Division" as the source of these data in maps and publications.